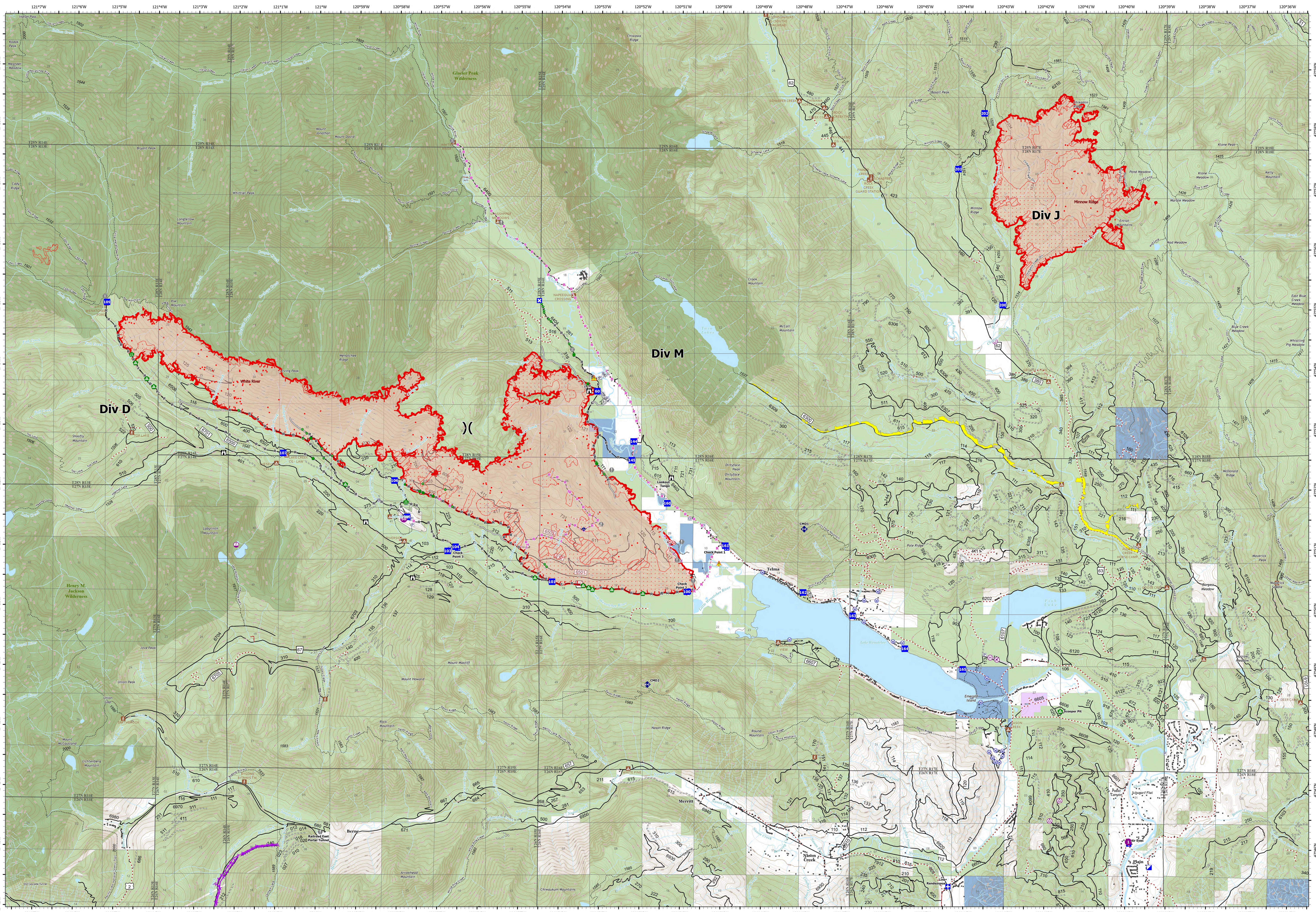


Operations -



White River
WA-OWF-000319
10,900 acres

Minnow Ridge
WA-OWF-000479
3,638 acres

Acres as of IR 10/13/22 @ 2033 PDT
Map Updated: 10/14/2022 8:56 AM

- | | | | | | | | | | |
|---------------------------|---------------------------|-------------------------|------------------------|-----------------------|----------------|--------------------------|---------------------------|-----------------------------|-----------------------|
| ● IR Isolated Heat Source | ● Helispot | ● Medical | ● Hot Spot - Spot Fire | ● Road Repair | ● Repeater | MA Completed Fuel Break | — Access or Improved Road | ● Day Use/Picnic | ● Private |
| ● IR Intense Heat | ● Helibase | ● Incident Command Post | ● Value at Risk | ● Repair Point | ● Hazard | — Completed Hand Line | — Other | ● Trailhead | ● State |
| ● IR Scattered Heat | ● Sling Site | ● Drop Point | ● Closure | ● Landing or Log Deck | ● Water Source | — Completed Road as Line | ● Aerial Hazard | ● Community Protection Line | ● U.S. Forest Service |
| ● Aerial Hazard | ● Unimproved Landing Area | ● Closure | ● Gate | ● Culvert | ● Pump | — Planned Hand Line | ● Structures | ● Wilderness | ● Local Government |
| ● Airstrip or Airport | ● Division Break | ● Lookout | ● Bridge | ● Mobile Weather Unit | ● Water Tank | ● Planned Road as Line | ● Campground | | |

