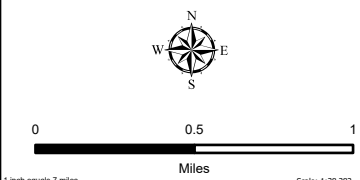
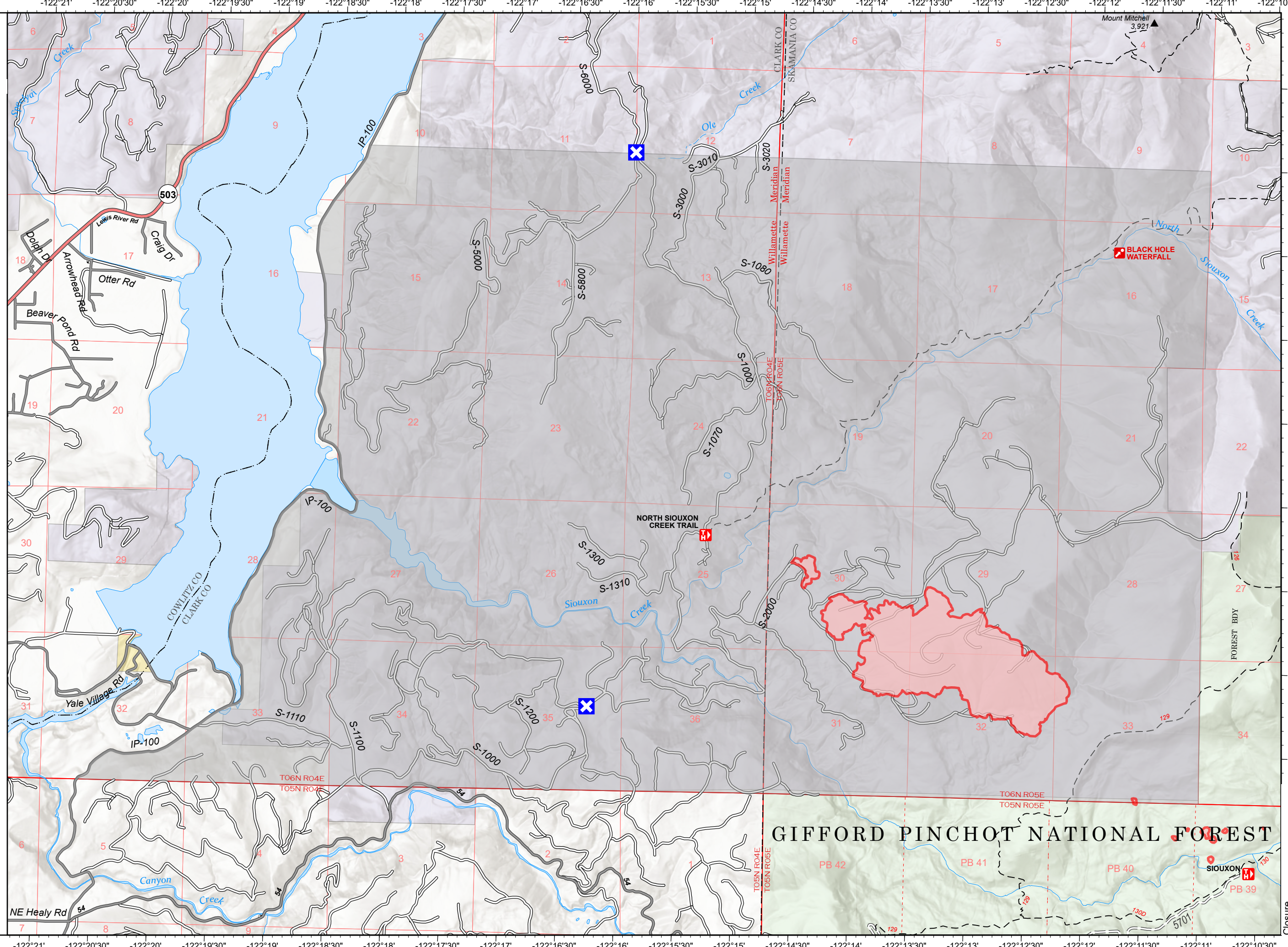


Closure

Black Hole
WA-PCS-000234
10/21/2022
561 Acres from
IR on 10/19/22 @ 1910

- Closure Area
- Wildfire Daily Fire Perimeter
- Closure
- Trailhead
- Interpretive Site
- Trail
- State Primary Route
- State Secondary Route
- Paved
- Unimproved Road
- Paved Roads
- Dirt (Not Paved)
- Other Road
- Forest Service Land
- Other State Lands
- Bureau of Land Management Lands



10/21/2022 1130
North American 1983 Datum, Lat/Long Grid

GIFFORD PINCHOT NATIONAL FOREST