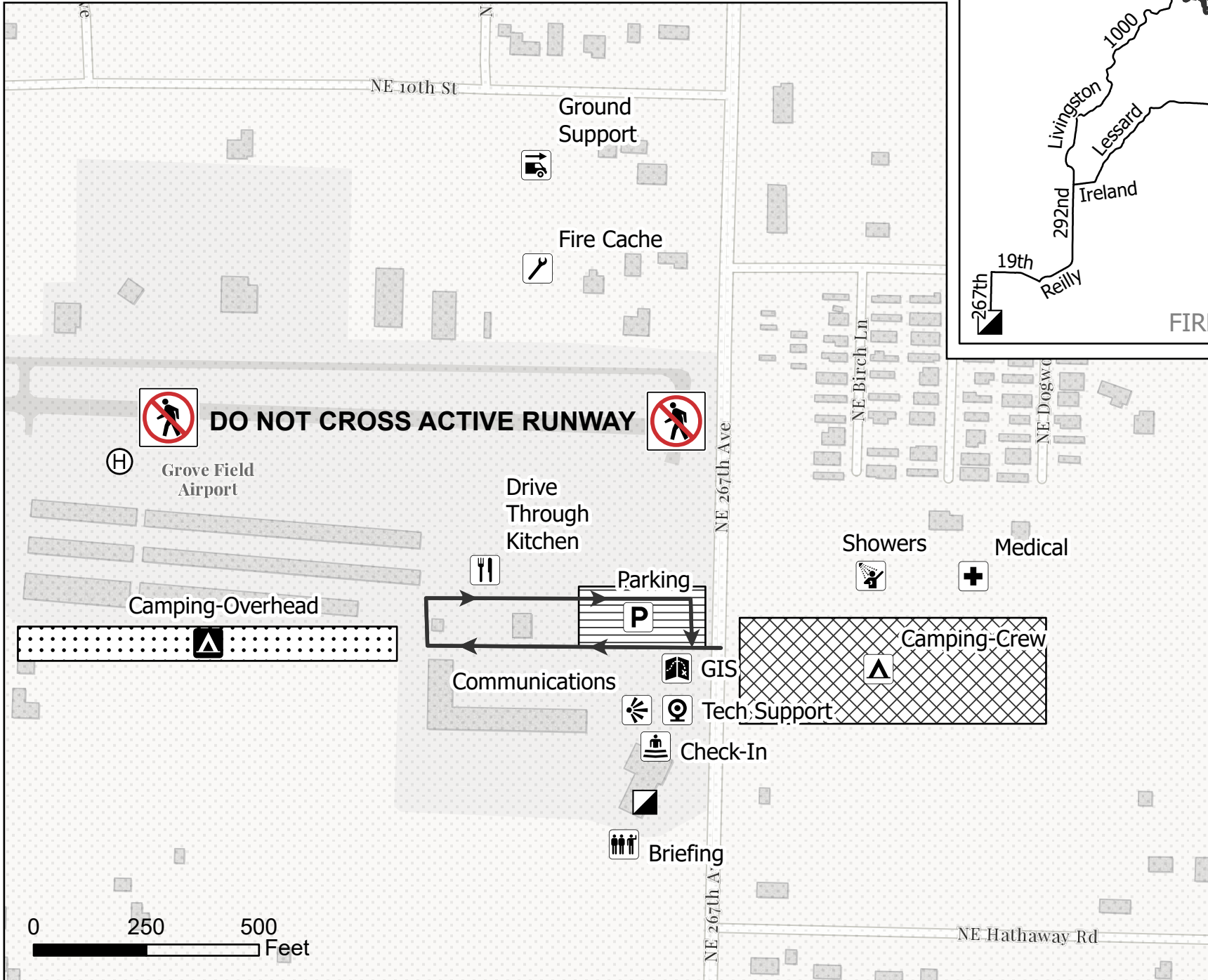
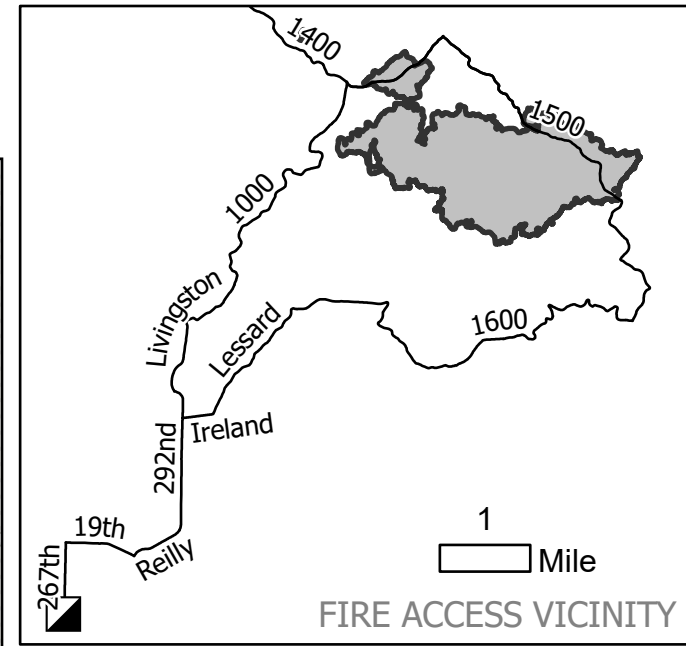


ICP Location:
 East County Fire & Rescue
 Station 91
 600 NE 267th Ave, Camas, WA

NAKIA CREEK FIRE CAMP



Legend

- Briefing
- Crew Camping
- Overhead Camping
- Check-In
- Communications
- Ground Support
- Drive Through Kitchen
- Medical
- Overhead Parking
- Showers
- Tech Support
- GIS
- Fire Cache
- Helibase
- Incident Command Post
- One Way Traffic

LogisticsPolygon

- Briefing
- Camping - Crew
- Camping - Overhead
- Day Sleeping
- Other
- Parking - Crew
- Parking - ICP Temporary
- Parking - Overhead

