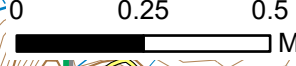


122°21.01'W 122°20.5'W 122°20'W 122°19.5'W 122°19'W 122°18.5'W 122°18'W 122°17.5'W 122°17'W 122°16.5'W

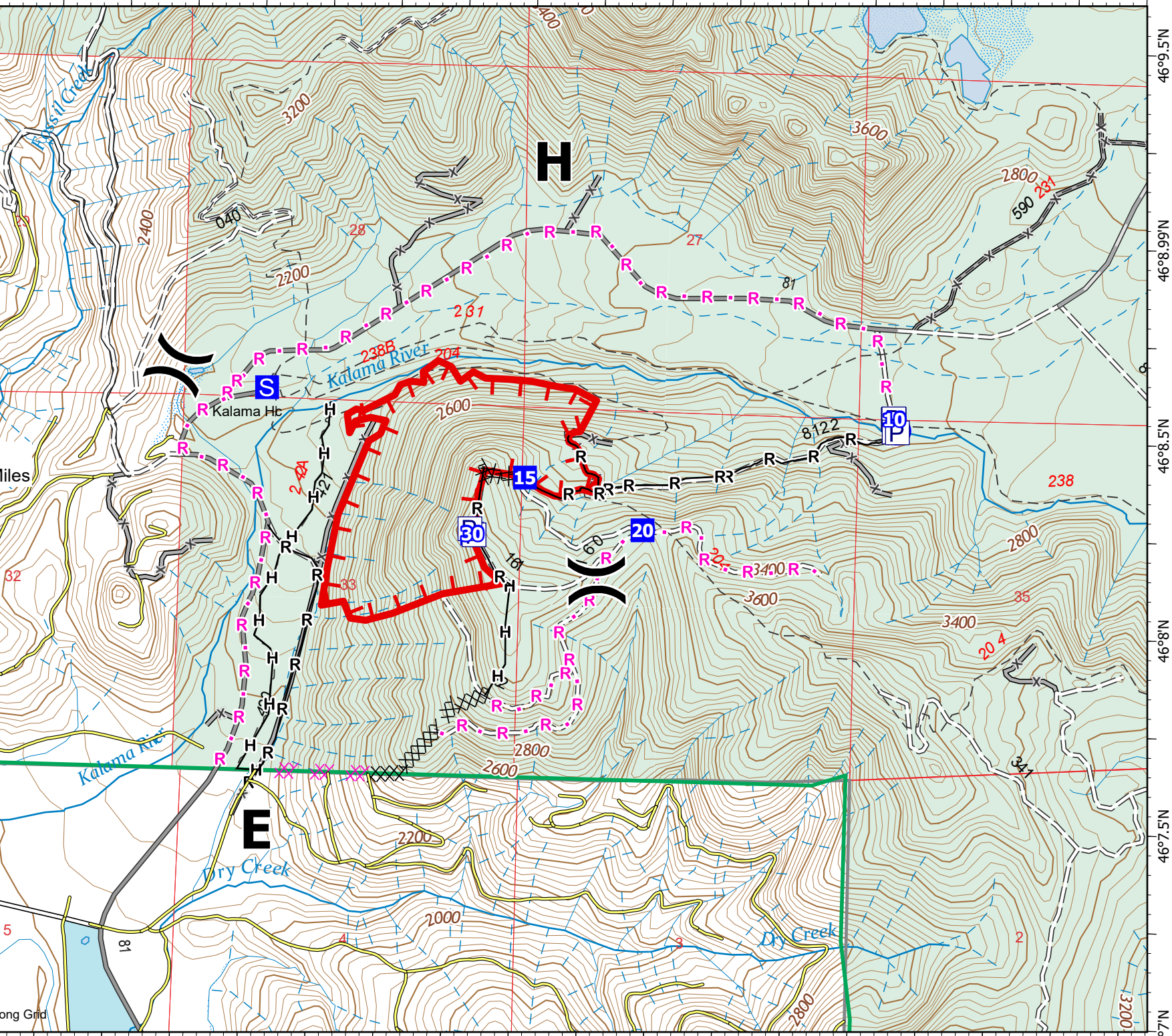
46°9.5'N 46°8.99'N 46°8.5'N 46°8'N 46°7.5'N 46°7'N

**IAP**  
**Kalama**  
**WAGPF001028**  
**9/16/2022**  
**224 acres at**  
**9/15/2022 1100**

- ( ) Division Break
- Drop Point
- Staging Area
- ⊙ Water Source
- ⊗ Completed Dozer Line
- H Completed Hand Line
- R Completed Road as Line
- ⊗ Planned Dozer Line
- R Planned Road as Line
- ┌ Uncontained
- PVT Roads



9/16/2022 2202  
 Acres from IR and Sketch  
 North American 1983 Datum. LatLong Grid



46°9.5'N 46°8.99'N 46°8.5'N 46°8'N 46°7.5'N 46°7'N

122°21.01'W 122°20.5'W 122°20'W 122°19.5'W 122°19'W 122°18.5'W 122°18'W 122°17.5'W 122°17'W 122°16.5'W