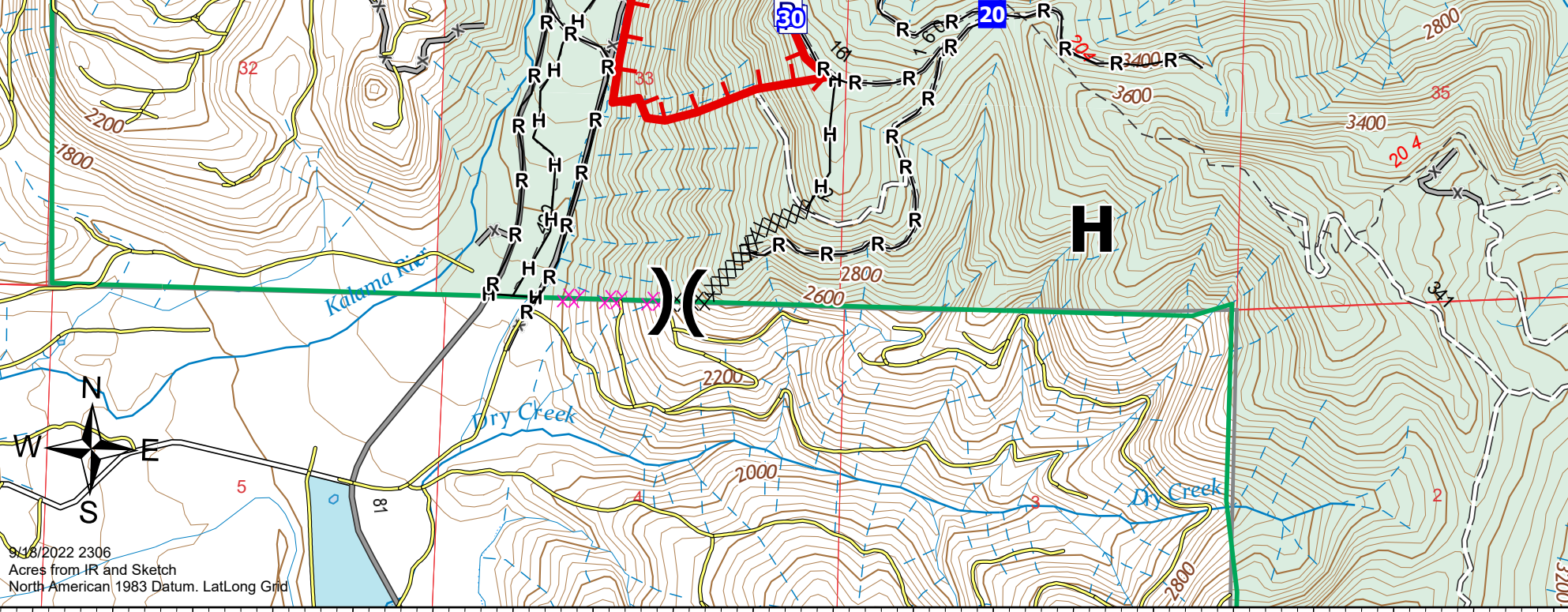


122°21.01'W 122°20.5'W 122°20'W 122°19.5'W 122°19'W 122°18.5'W 122°18'W 122°17.5'W 122°17'W 122°16.5'W

46°9.5'N 46°8.99'N 46°8.5'N 46°8'N 46°7.5'N 46°7'N

IAP
Kalama
WAGPF001028
9/19/2022
 224 acres at
 9/15/2022 1100

- () Division Break
- Drop Point
- Ⓢ Staging Area
- Ⓜ Value at Risk
- Ⓜ Water Source
- ⊗ Completed Dozer Line
- H Completed Hand Line
- R Completed Road as Line
- Planned Dozer Line
- █ Escape Route
- █ Contained
- █ Uncontained
- PVT Roads



9/15/2022 2306
 Acres from IR and Sketch
 North American 1983 Datum. LatLong Grid

122°21.01'W 122°20.5'W 122°20'W 122°19.5'W 122°19'W 122°18.5'W 122°18'W 122°17.5'W 122°17'W 122°16.5'W 46°7'N