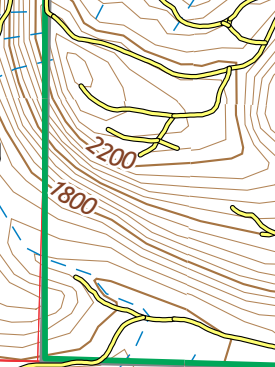
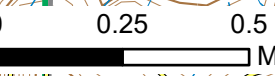


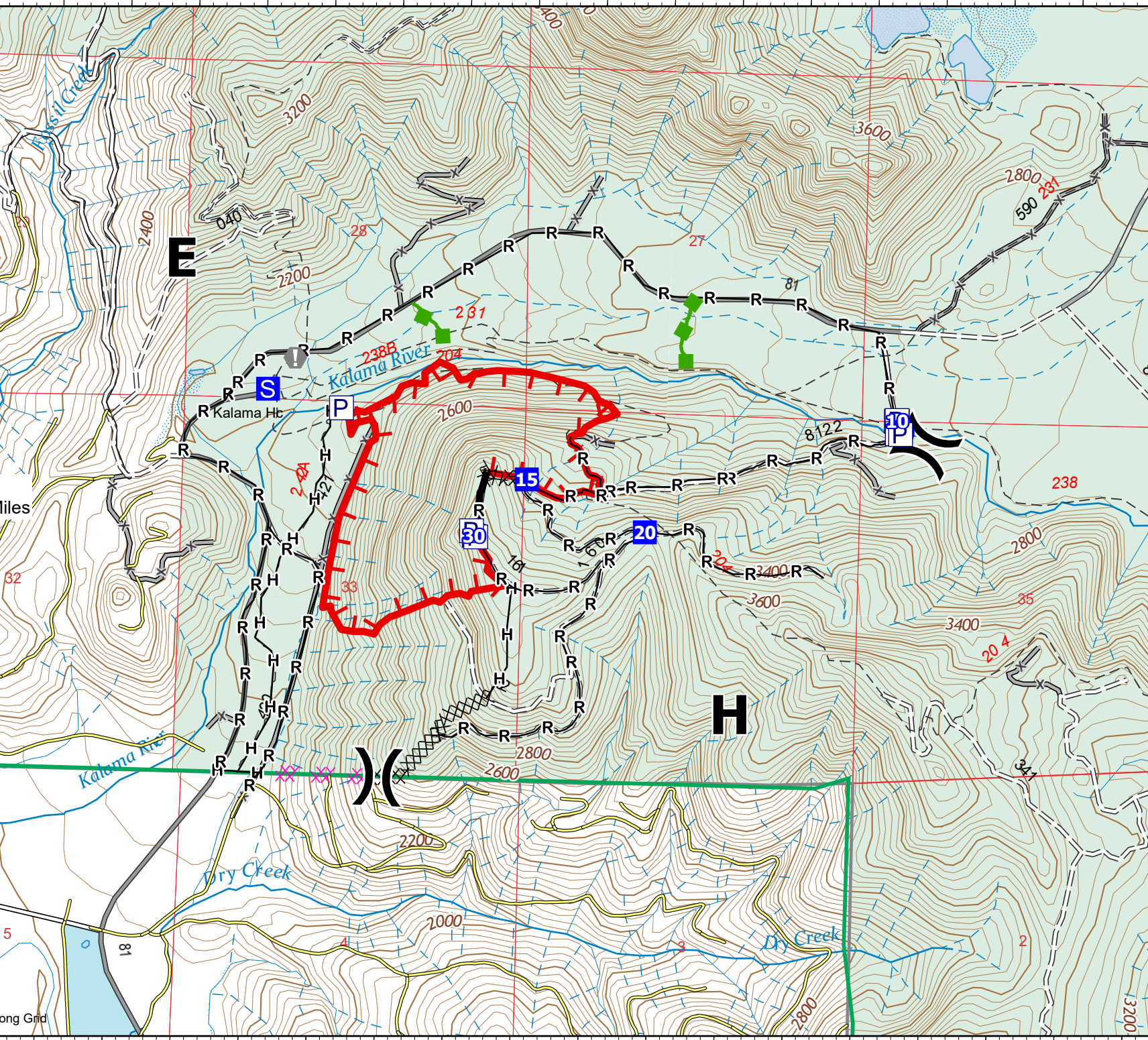
122°21.01'W 122°20.5'W 122°20'W 122°19.5'W 122°19'W 122°18.5'W 122°18'W 122°17.5'W 122°17'W 122°16.5'W

IAP
Kalama
WAGPF001028
9/20/2022
 238 acres at
 9/19/2022 1250

- () Division Break
- Drop Point
- Ⓢ Staging Area
- Ⓜ Value at Risk
- Ⓜ Water Source
- ⊗ Completed Dozer Line
- Completed Hand Line
- Completed Road as Line
- Planned Dozer Line
- █ Escape Route
- █ Contained
- █ Uncontained
- PVT Roads



9/19/2022 2112
 Acres from Mixed Methods
 North American 1983 Datum. LatLong Grid



46°9.5'N
46°8.99'N
46°8.5'N
46°8'N
46°7.5'N
46°7'N

46°9.5'N
46°8.99'N
46°8.5'N
46°8'N
46°7.5'N
46°7'N

122°21.01'W 122°20.5'W 122°20'W 122°19.5'W 122°19'W 122°18.5'W 122°18'W 122°17.5'W 122°17'W 122°16.5'W