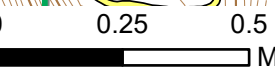


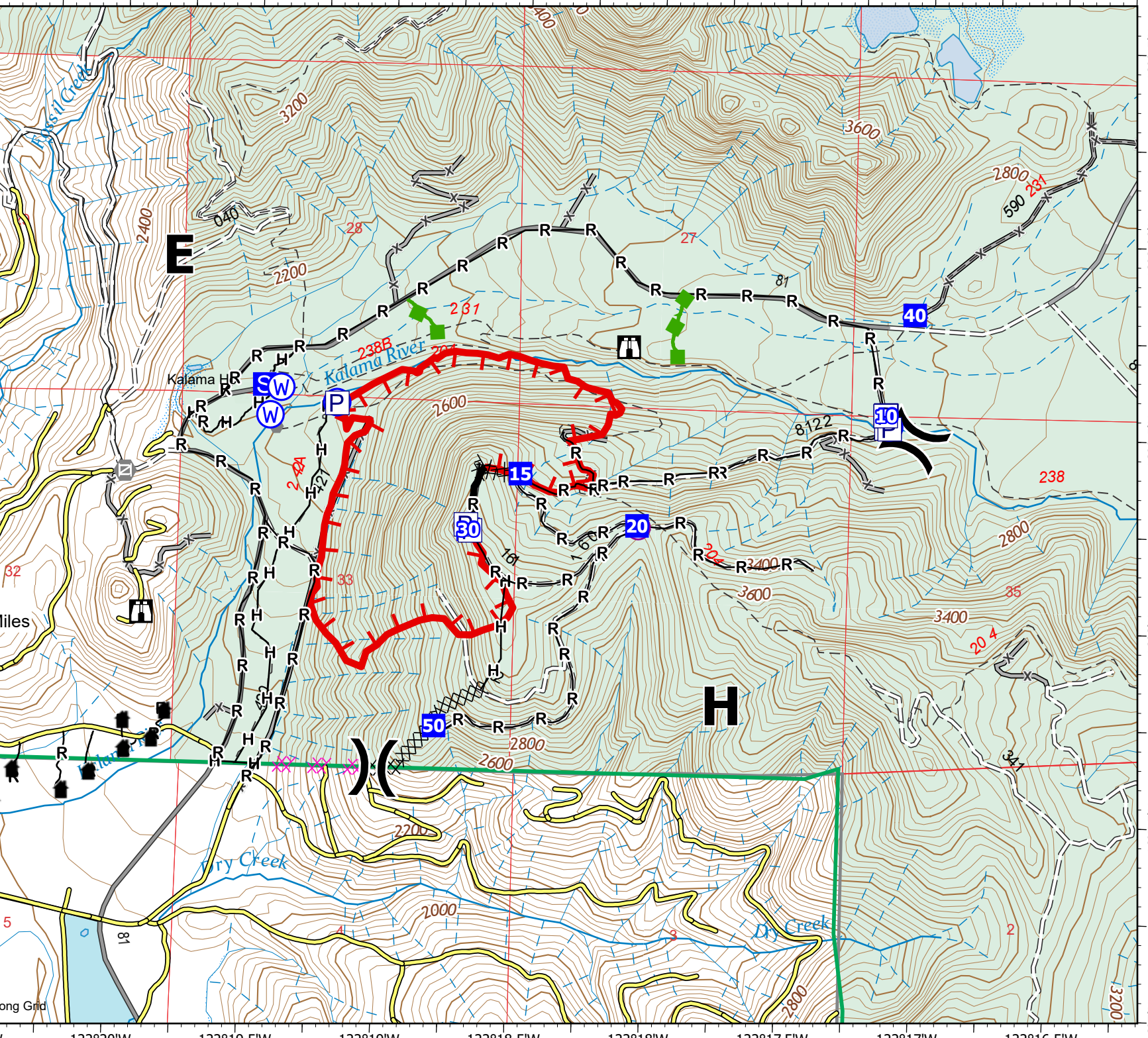
122°21.01'W 122°20.5'W 122°20'W 122°19.5'W 122°19'W 122°18.5'W 122°18'W 122°17.5'W 122°17'W 122°16.5'W

IAP
Kalama
WAGPF001028
9/22/2022
 304 acres at
 9/21/2022 1102

- Structures
- Unimproved Landing Area
- Division Break
- Drop Point
- Staging Area
- Lookout
- Other
- Gate
- Water Source
- Completed Dozer Line
- Completed Hand Line
- Completed Road as Line
- Planned Dozer Line
- Access or Improved Road
- Escape Route
- Contained
- Uncontained
- PVT Roads



9/22/2022 0030
 Acres from Mixed Methods
 North American 1983 Datum. LatLong Grid



46°9.5'N 46°8.99'N 46°8.5'N 46°8'N 46°7.5'N 46°7'N

46°9.5'N 46°8.99'N 46°8.5'N 46°8'N 46°7.5'N 46°7'N

122°21.01'W 122°20.5'W 122°20'W 122°19.5'W 122°19'W 122°18.5'W 122°18'W 122°17.5'W 122°17'W 122°16.5'W