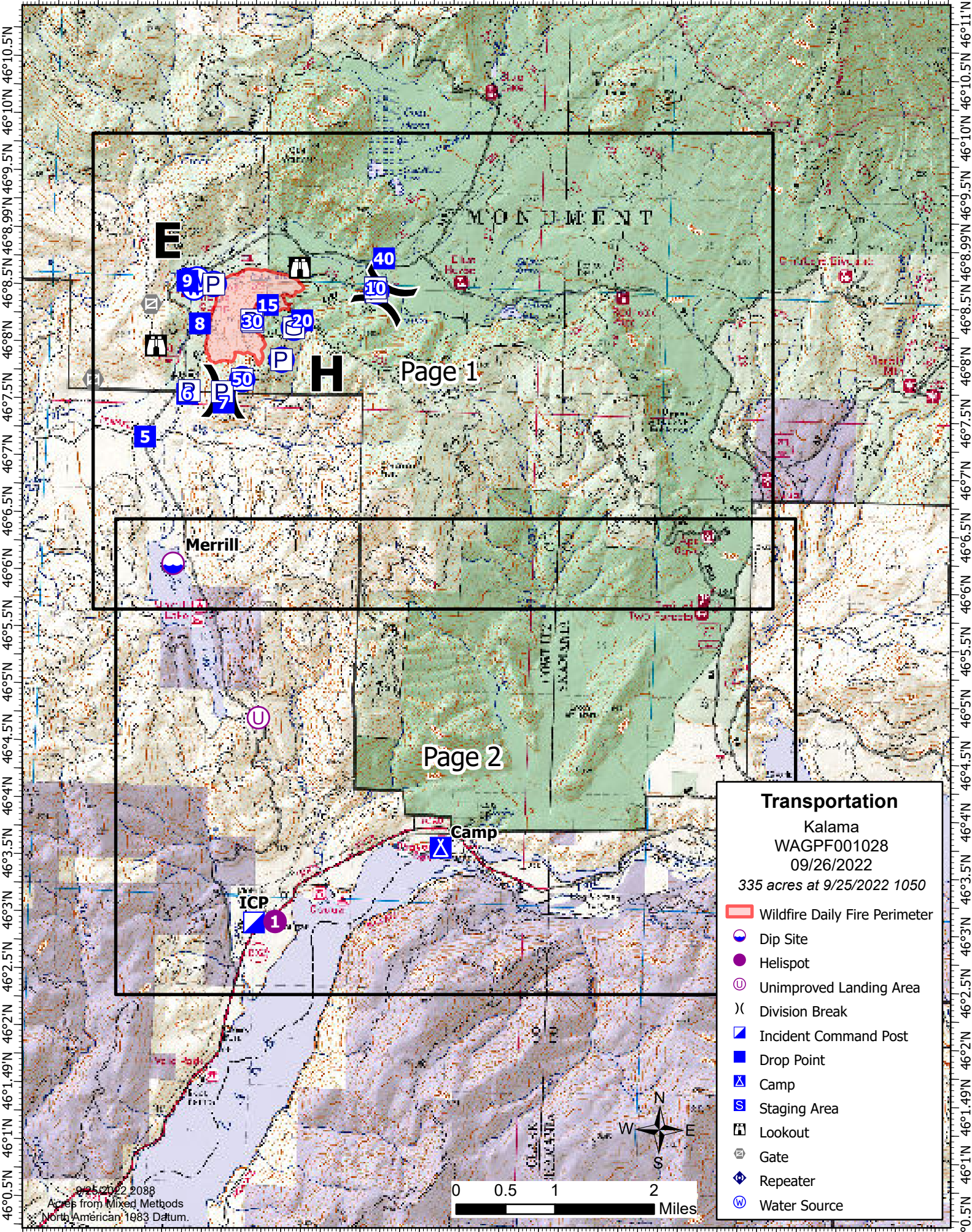


122°21.5'W 122°20.5'W 122°19.5'W 122°18.5'W 122°17.5'W 122°16.5'W 122°15.5'W 122°14.5'W 122°13.51'W 122°12.5'W 122°11.5'W 122°10.5'W



Transportation
 Kalama
 WAGPF001028
 09/26/2022
 335 acres at 9/25/2022 1050

- Wildfire Daily Fire Perimeter
- Dip Site
- Helispot
- Unimproved Landing Area
- Division Break
- Incident Command Post
- Drop Point
- Camp
- Staging Area
- Lookout
- Gate
- Repeater
- Water Source



09/25/2022 2088
Acres from Mixed Methods
North American 1983 Datum.

122°21.01'W 122°20'W 122°19'W 122°18'W 122°17'W 122°16'W 122°15'W 122°14'W 122°13'W 122°12'W 122°11'W 122°10'W