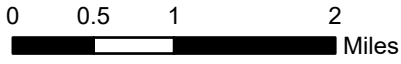
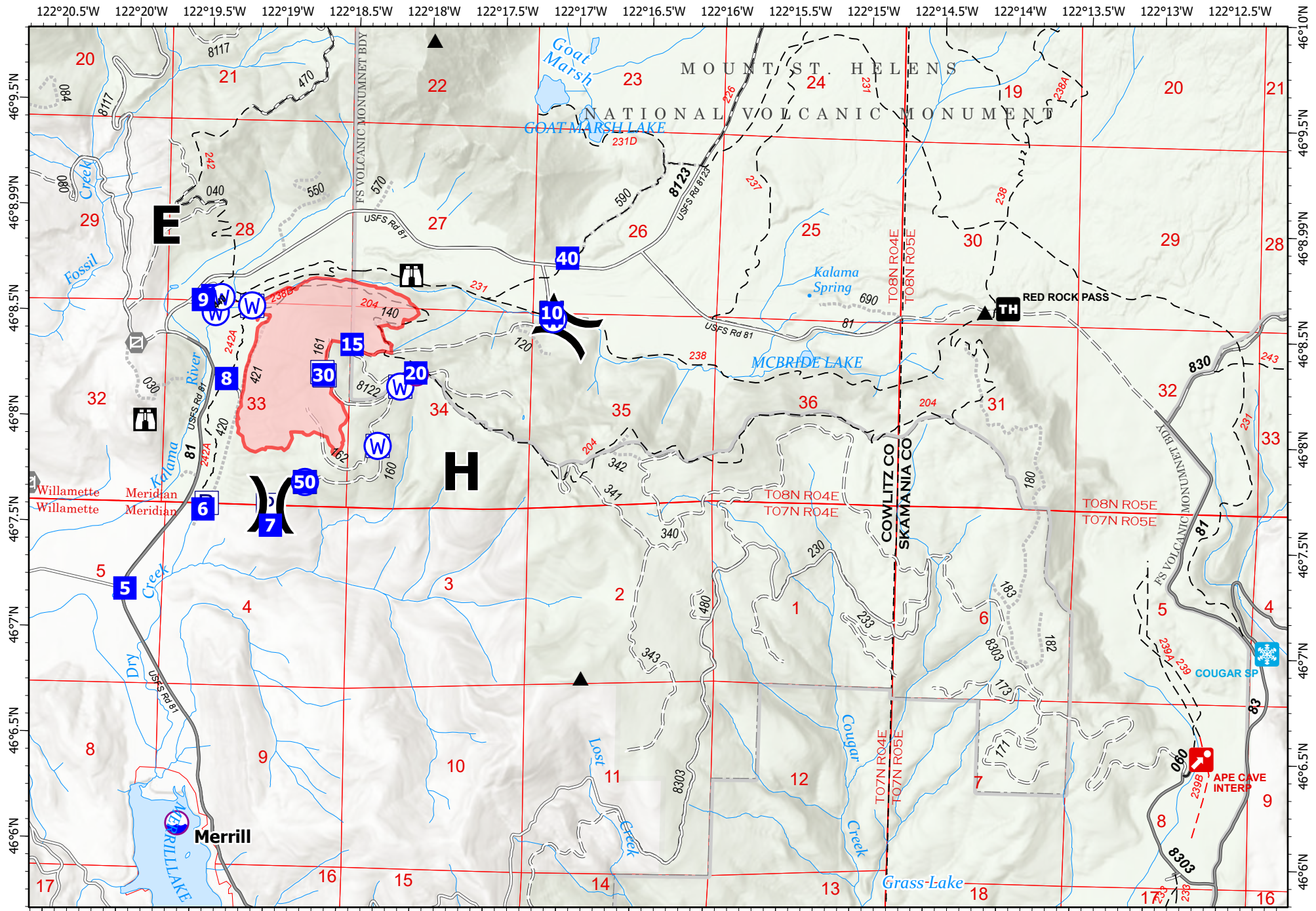


**Transportation**

Kalama  
 WAGPF001028  
 09/26/2022  
 335 acres at 9/25/2022 1050

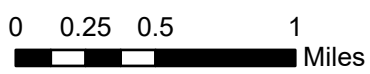


- ▭ Wildfire Daily Fire Perimeter
- ◐ Dip Site
- ◐ Helispot
- ⊕ Unimproved Landing Area
- ⌋ Division Break
- ◼ Incident Command Post
- ◼ Drop Point
- ⊗ Camp
- ⊞ Staging Area
- ⌚ Lookout
- ⊞ Gate
- ⬢ Repeater
- ⊞ Water Source



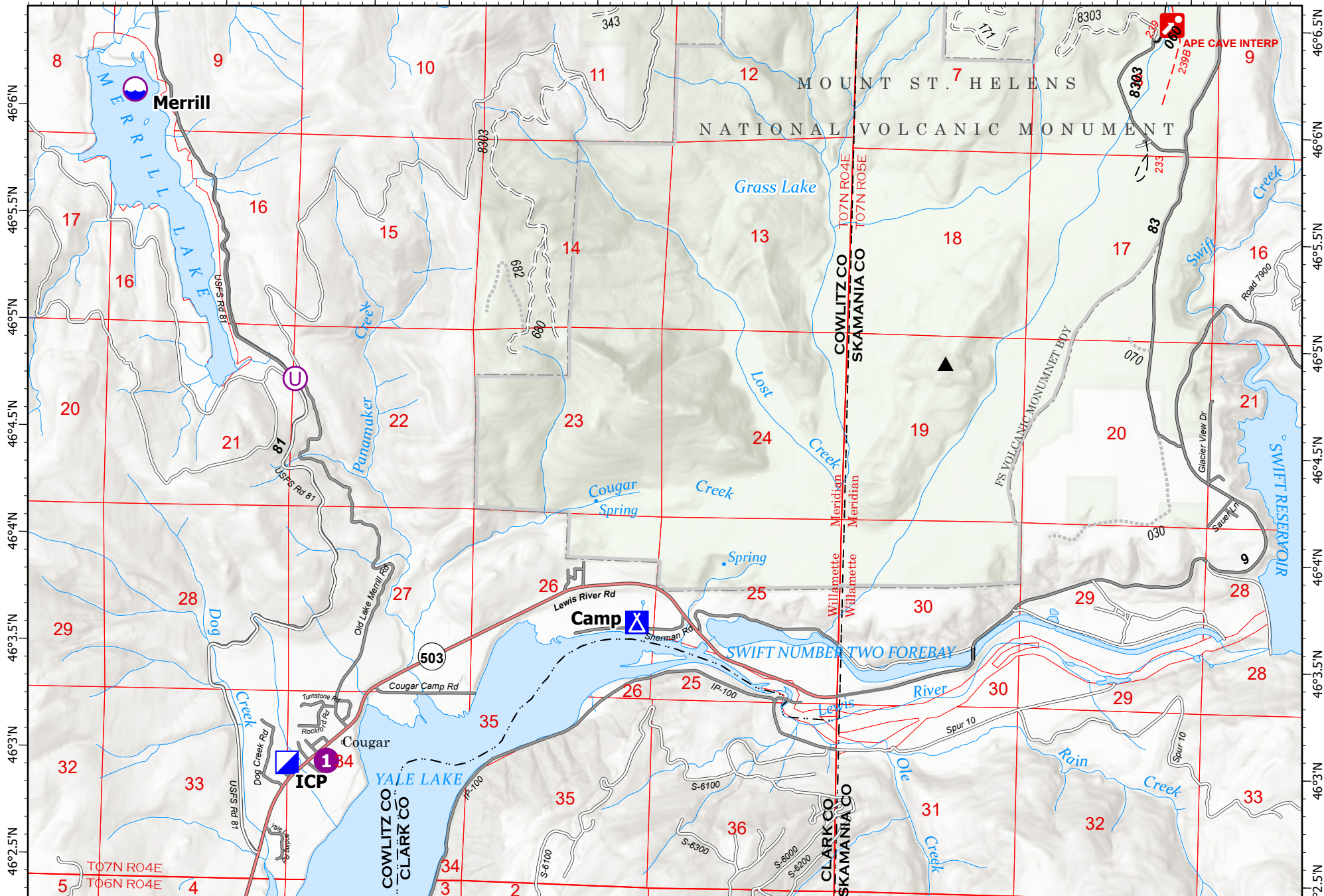
- ▭ Wildfire Daily Fire Perimeter
- ⬜ Dip Site
- ⊕ Unimproved Landing Area
- ⌋ Division Break
- ⬜ Drop Point
- ⊞ Staging Area
- ⊞ Lookout
- ⊞ Gate
- ⊞ Label Point
- ⊞ Pump
- ⊞ Water Tank
- ⊞ Water Source

Page Name: Page 1



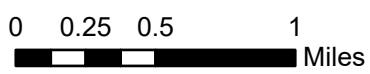
### Transportation

Kalama  
 WAGPF001028  
 09/26/2022  
 335 acres at 9/25/2022 1050



- Dip Site
- Helispot
- U Unimproved Landing Area
- ▣ Incident Command Post
- ▴ Camp

Page Name: Page 2



### Transportation

Kalama  
 WAGPF001028  
 09/26/2022  
 335 acres at 9/25/2022 1050