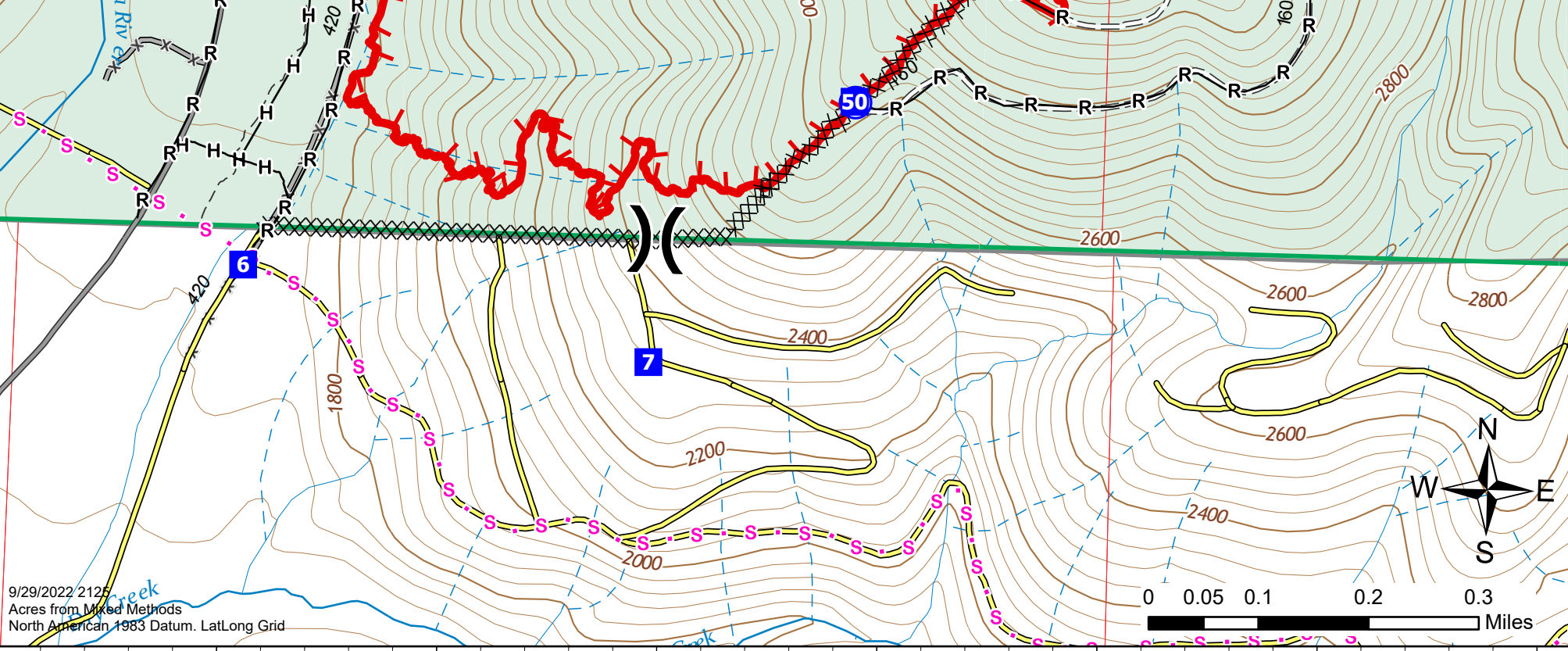


IAP
South
 Kalama
 WAGPF001028
 9/30/2022
 432 acres at
 9/27/2022 1144

- ⊙ Unimproved Landing Area
- ⋈ Division Break
- Drop Point
- ⊙ Hot Spot - Spot Fire
- ⊙ Water Source
- ⋈⋈ Completed Dozer Line
- H Completed Hand Line
- R Completed Road as Line
- S Planned Secondary Line
- ▬ Contained
- └ Uncontained
- ▬ PVT Roads



9/29/2022 2125
 Acres from Mixed Methods
 North American 1983 Datum. LatLong Grid

