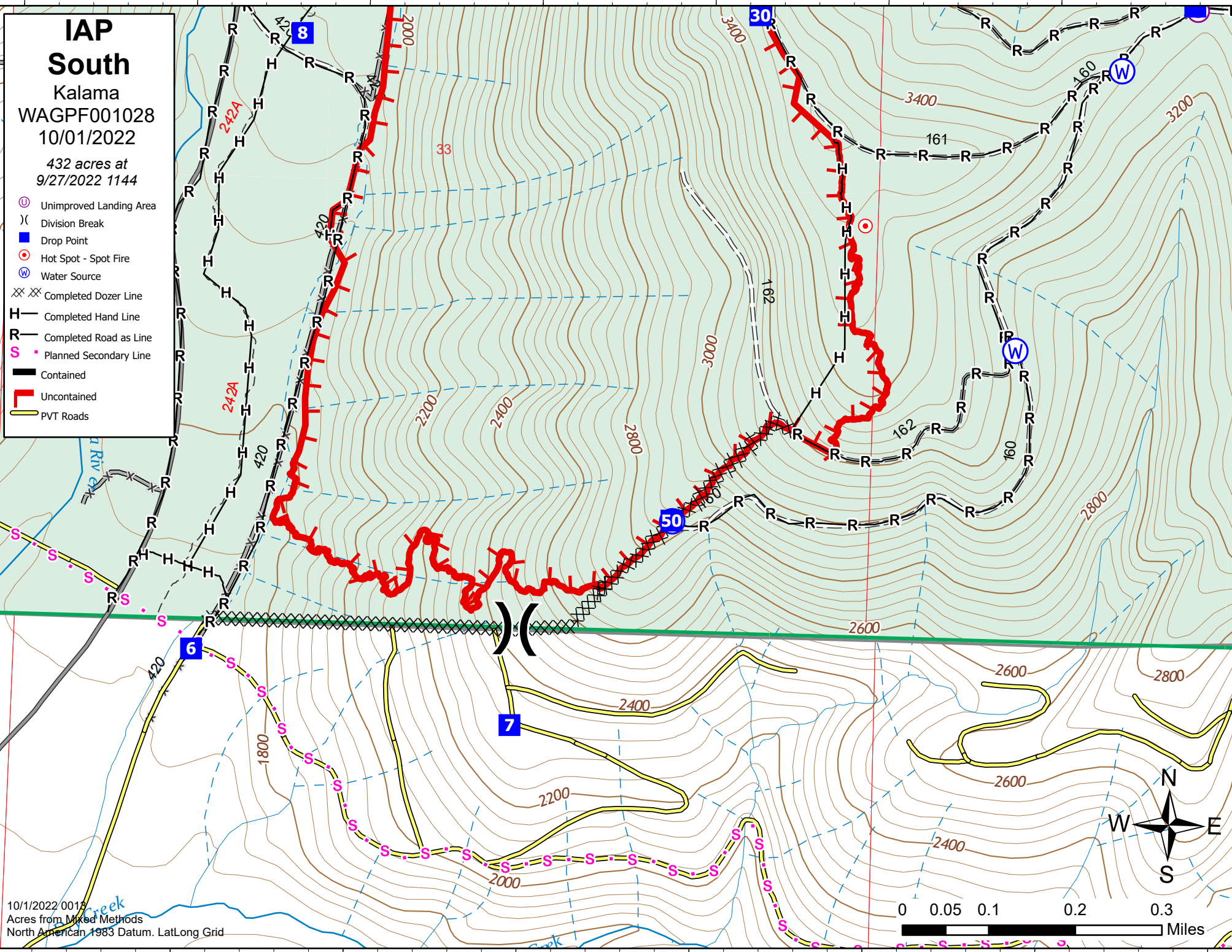


**IAP**  
**South**  
 Kalama  
 WAGPF001028  
 10/01/2022  
 432 acres at  
 9/27/2022 1144

- Unimproved Landing Area
- Division Break
- Drop Point
- Hot Spot - Spot Fire
- Water Source
- Completed Dozer Line
- Completed Hand Line
- Completed Road as Line
- Planned Secondary Line
- Contained
- Uncontained
- PVT Roads



10/1/2022 0013  
 Acres from Mixed Methods  
 North American 1983 Datum. LatLong Grid

