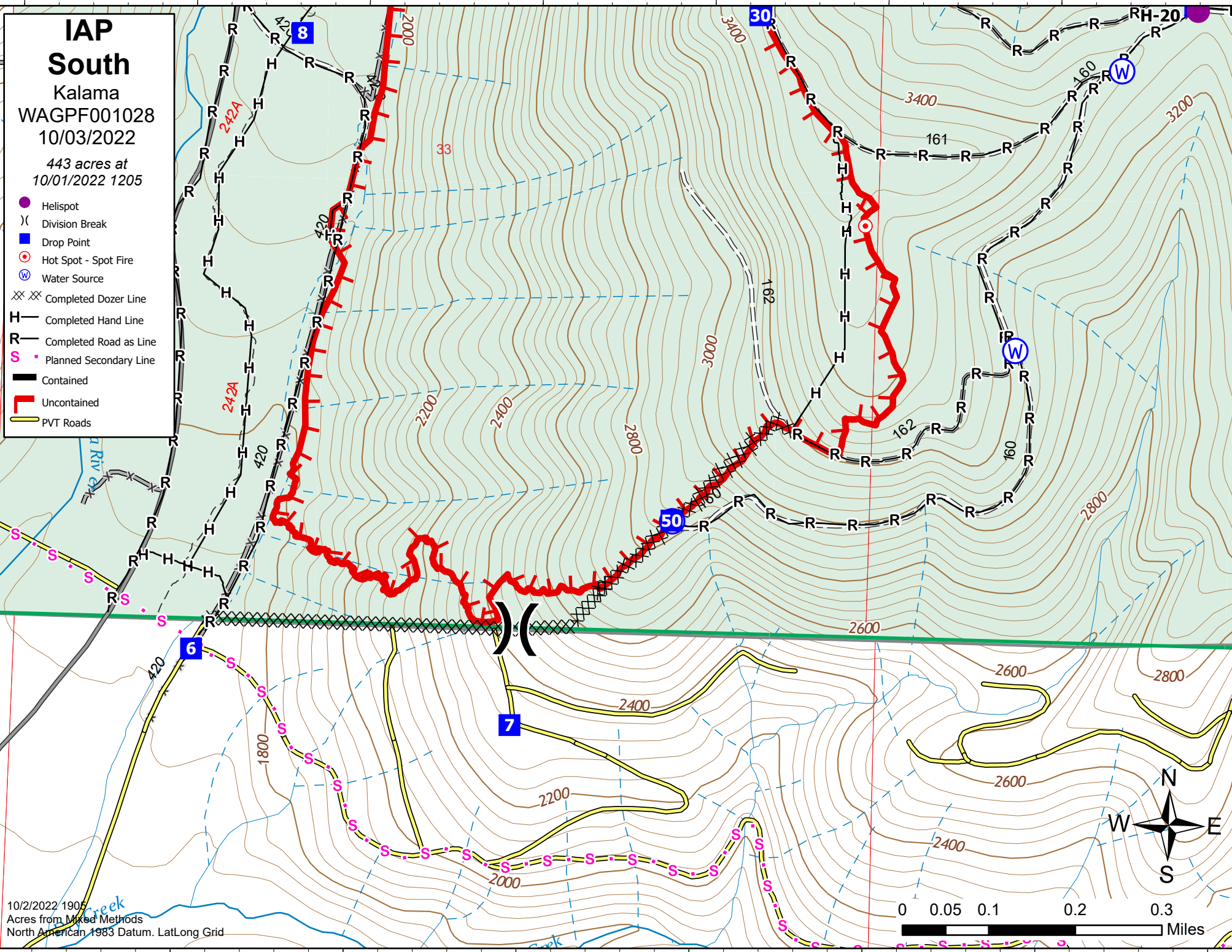


IAP
South
 Kalama
 WAGPF001028
 10/03/2022
 443 acres at
 10/01/2022 1205

- Helispot
- X Division Break
- 8 Drop Point
- Hot Spot - Spot Fire
- W Water Source
- XX Completed Dozer Line
- H Completed Hand Line
- R Completed Road as Line
- S Planned Secondary Line
- Contained
- Uncontained
- PVT Roads



10/2/2022 1905
 Acres from Mixed Methods
 North American 1983 Datum. LatLong Grid

