

122°19'W

122°18.5'W

122°18'W

46°8.5'N

46°8.5'N

46°8'N

46°8'N

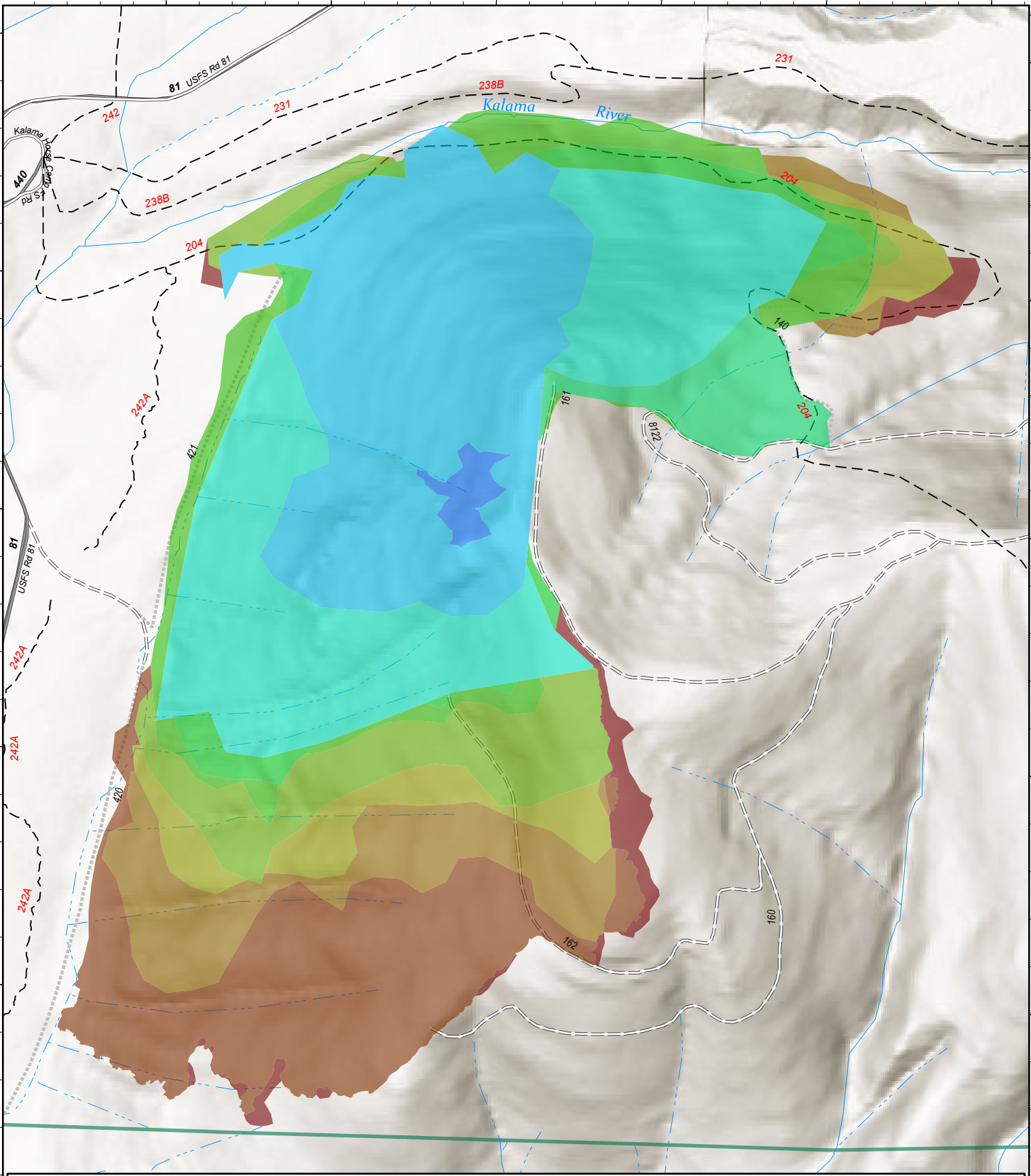
46°7.5'N

46°7.5'N

122°19'W

122°18.5'W

122°18'W



# Progression

Kalama  
WAGPF001028  
10/03/2022

443 acres at 10/01/2022 1205



10/2/2022 2056  
Acres from Mixed Methods  
North American 1983 Datum, LatLong Grid

Forest Service Land			PROG_LEGEND4		
20220907 @ 1349	4ac	+4ac	20220920 @ 1149	267ac	+29ac
20220910 @ 1333	108ac	+104ac	20220921 @ 1102	302ac	+35ac
20220914 @ 1600	208ac	+100ac	20220924 @ 1050	325ac	+23ac
20220915 @ 1100	224ac	+16ac	20220926 @ 1230	363ac	+38ac
20220919 @ 1250	238ac	+14ac	20220927 @ 1800	433ac	+70ac
			20221001 @ 1205	443ac	+10ac

0 0.25 0.5 Miles