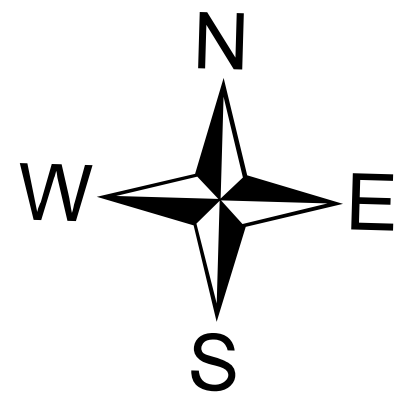


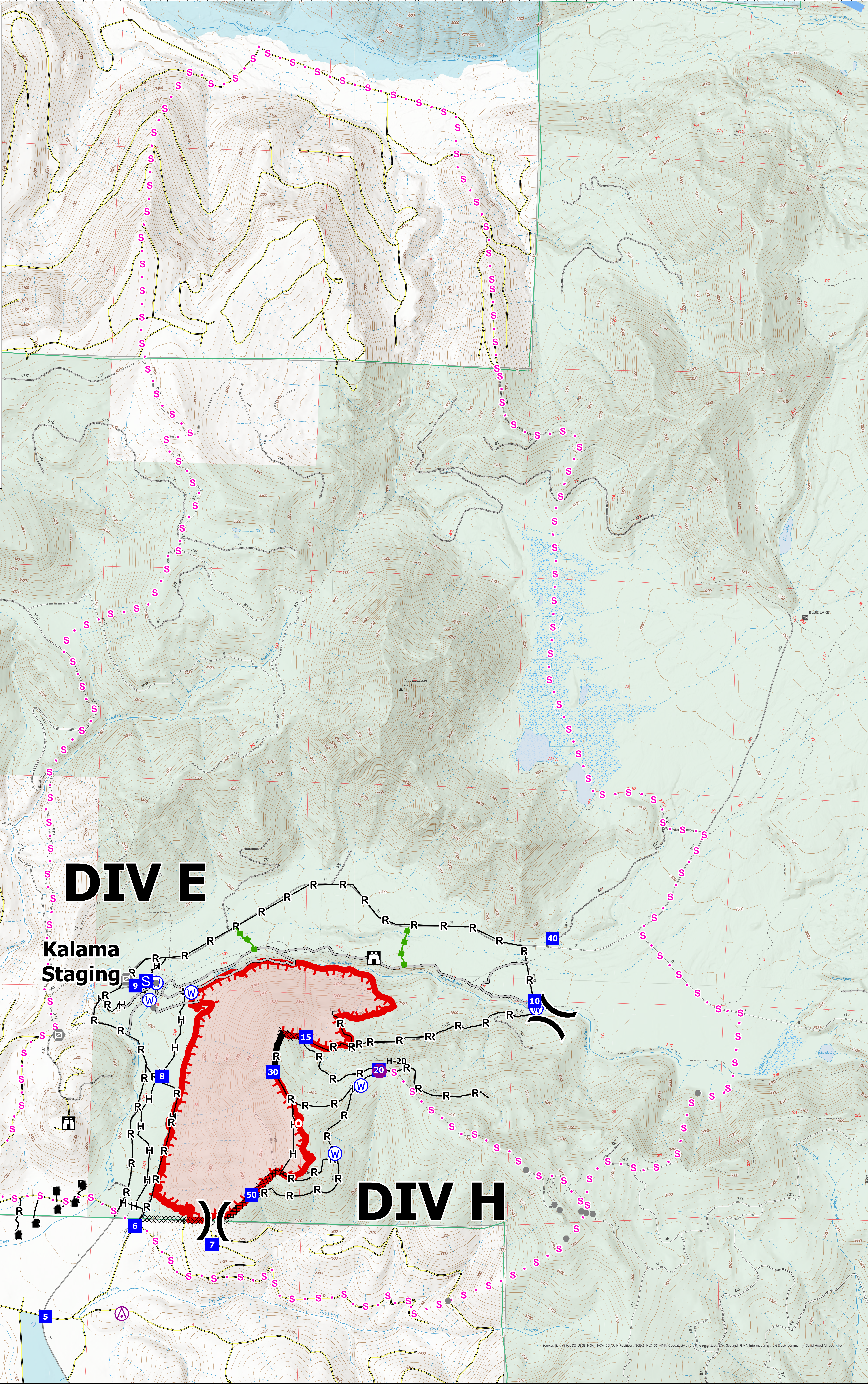
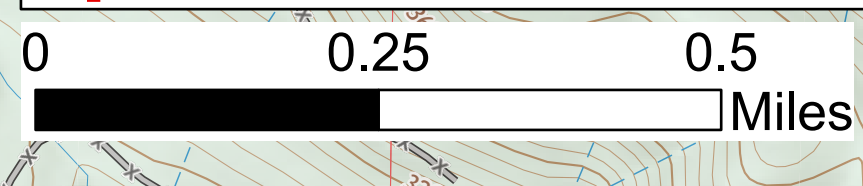
Briefing

Kalama
WAGPF001028
10/04/2022

454 acres at 10/03/2022 1200



- Structures
- Aerial Hazard
- Helispot
- Division Break
- Drop Point
- Staging Area
- Lookout
- Hot Spot - Spot Fire
- Other
- Gate
- Mobile Weather Unit
- Water Source
- Completed Dozer Line
- Completed Hand Line
- Completed Road as Line
- Planned Secondary Line
- Access or Improved Road
- Escape Route
- Temporary Flight Restriction
- Contained
- Uncontained
- PVT Roads
- Contained
- Uncontained



DIV E

Kalama Staging

DIV H