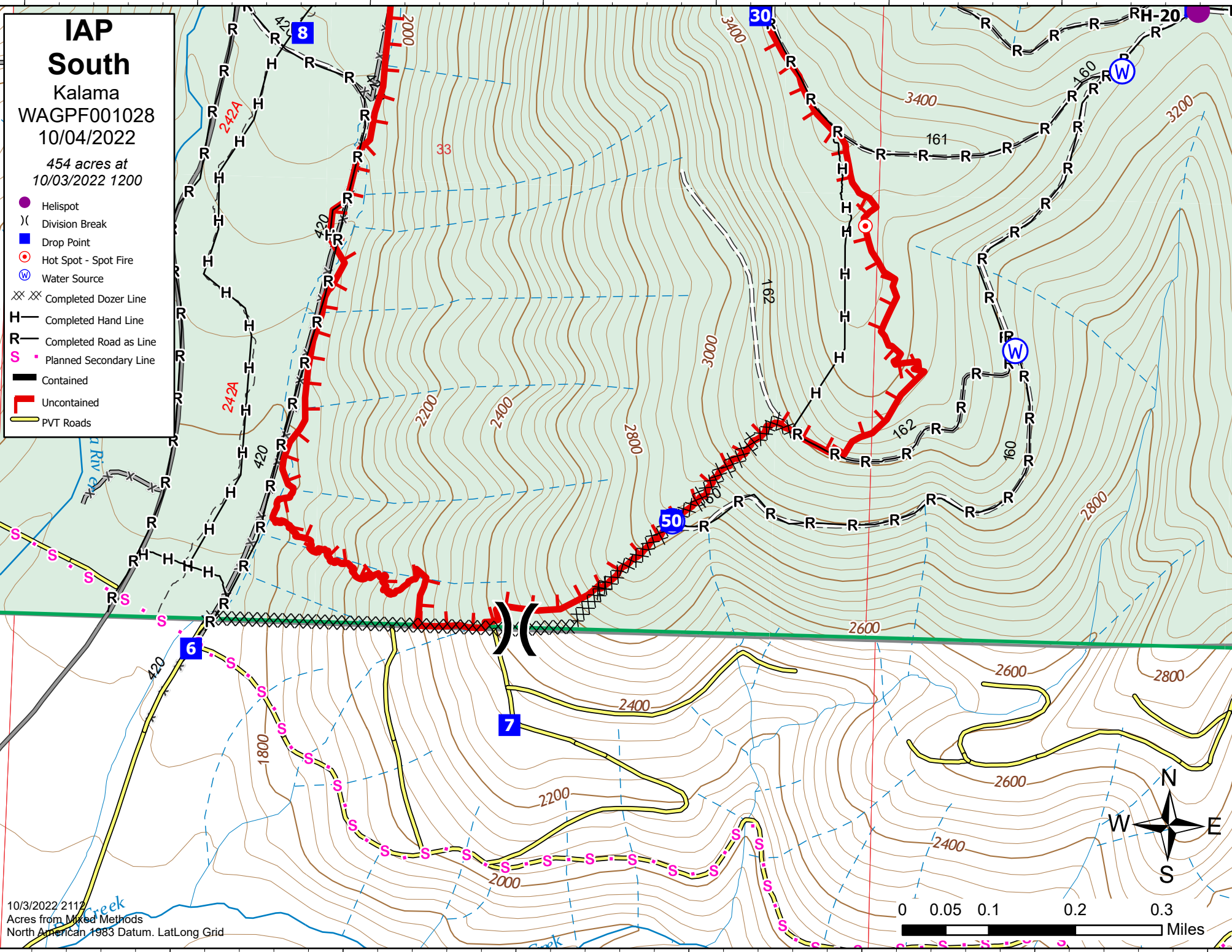


**IAP**  
**South**  
 Kalama  
 WAGPF001028  
 10/04/2022  
 454 acres at  
 10/03/2022 1200

- Helispot
- X Division Break
- 8 Drop Point
- Hot Spot - Spot Fire
- W Water Source
- XX Completed Dozer Line
- H Completed Hand Line
- R Completed Road as Line
- S Planned Secondary Line
- Contained
- Uncontained
- PVT Roads



10/3/2022 2112  
 Acres from Mixed Methods  
 North American 1983 Datum. LatLong Grid

