

IAP SOUTH

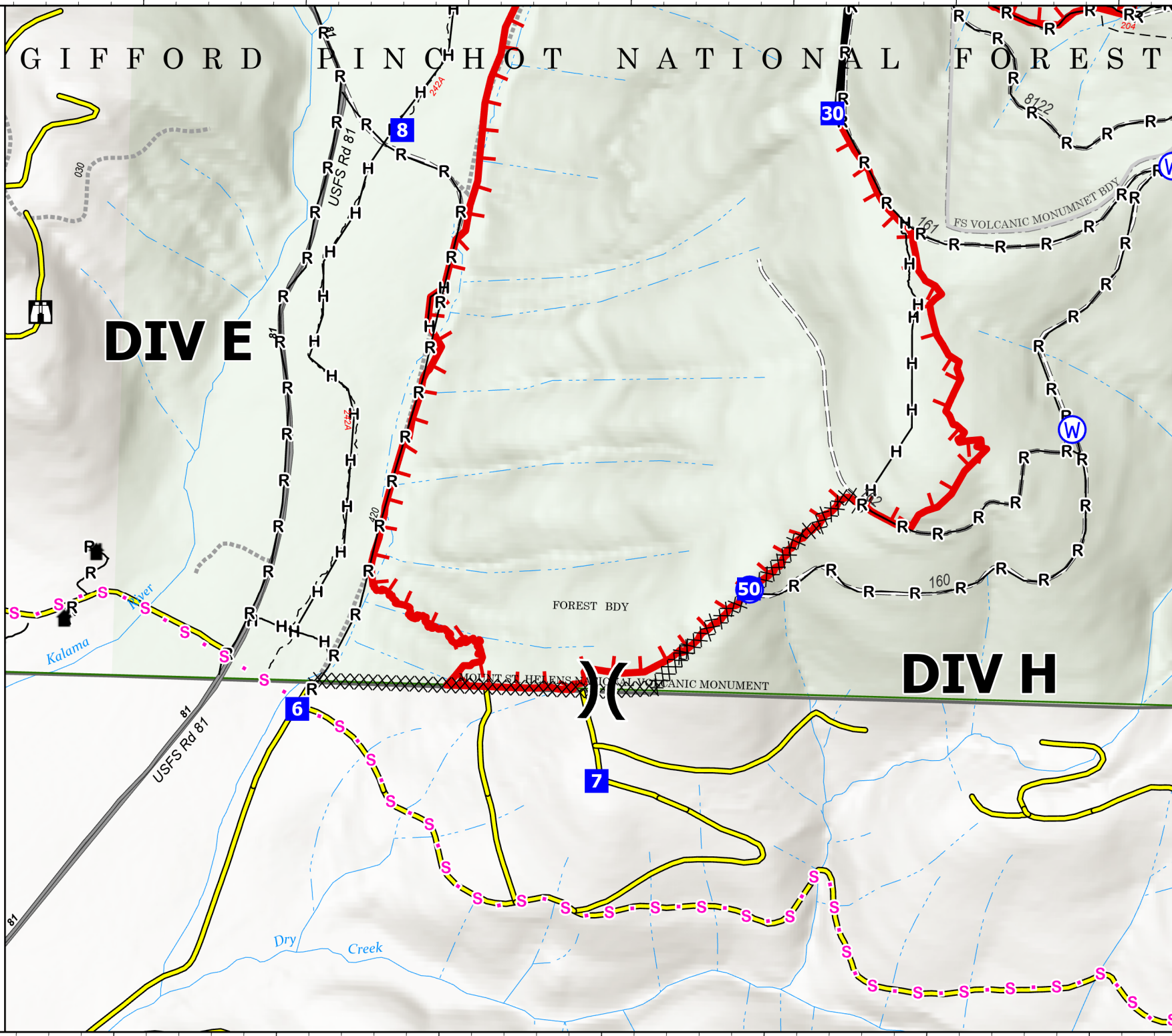
Kalama
WA-GPF-001028
10/07/2022

454 acres
at 10/05/2022 1621
from BODE and field

- Structures
- Aerial Hazard
- Division Break
- Drop Point
- Lookout
- Water Source
- Completed Dozer Line
- Completed Hand Line
- Completed Road as Line
- Planned Secondary Line
- Contained
- Uncontained
- Private Road
- National Designated Trail
- Trail
- Paved
- Unimproved Road
- Forest Service Roads Closed
- Paved Roads
- Forest Service Land

DIV E

DIV H



0 0.07 0.15



Miles
Scale: 1:10,000



10/6/2022 1933
North American 1983 Datum.
Lat/Long Grid

122°19.5'W

122°19'W

122°18.5'W

46°8'N

46°7.5'N