

IAP SOUTH

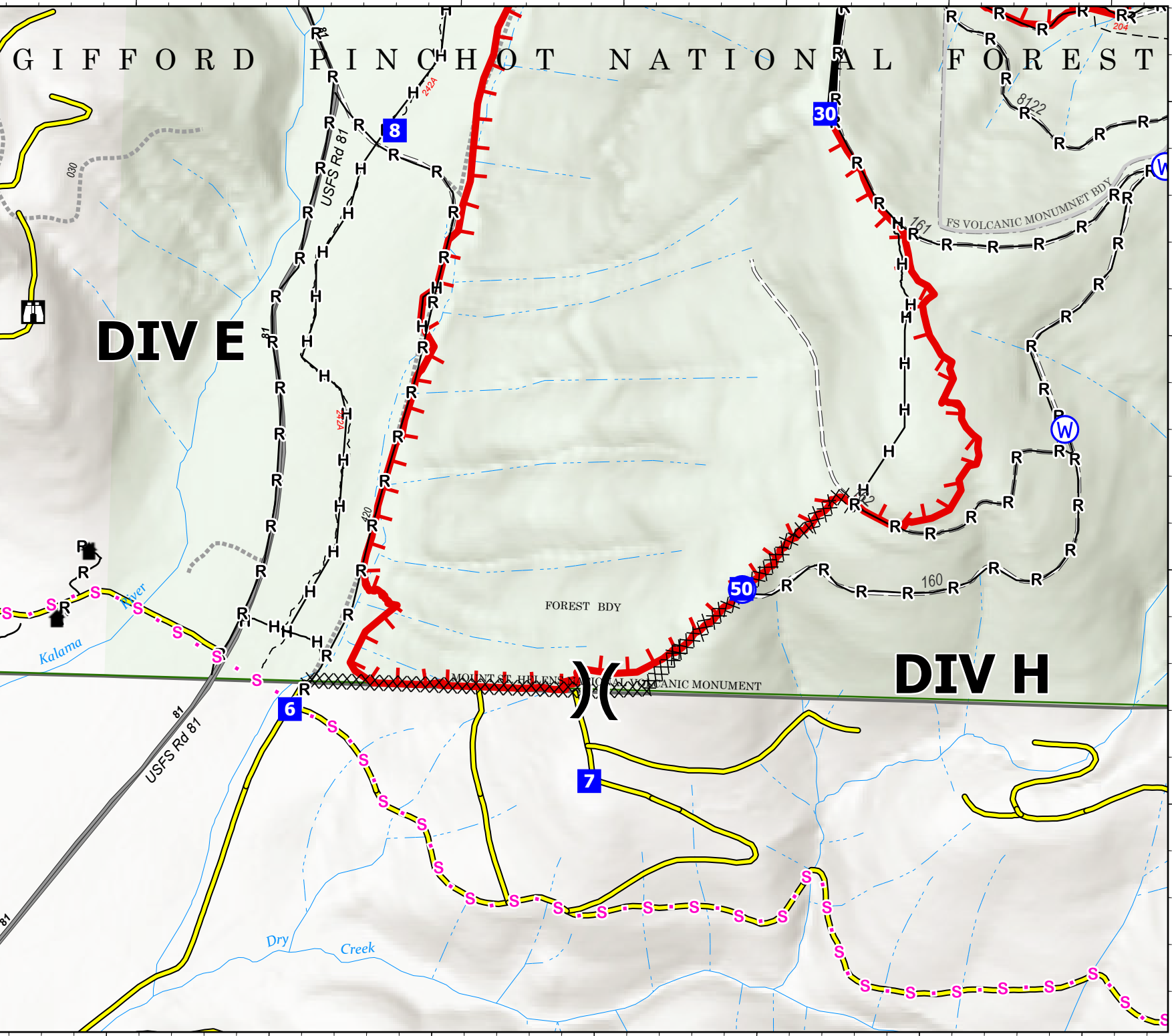
Kalama
WA-GPF-001028
10/08/2022

461 acres
at 10/07/2022 1715
from BODE

- Structures
- Aerial Hazard
- Division Break
- Drop Point
- Lookout
- Water Source
- Completed Dozer Line
- Completed Hand Line
- Completed Road as Line
- Planned Secondary Line
- Contained
- Uncontained
- Private Road
- National Designated Trail
- Trail
- Paved
- Unimproved Road
- Forest Service Roads Closed
- Paved Roads
- Forest Service Land

DIV E

DIV H



0 0.08 0.16

Miles

Scale: 1:10,000



10/7/2022 2258
North American 1983 Datum.
LatLong Grid