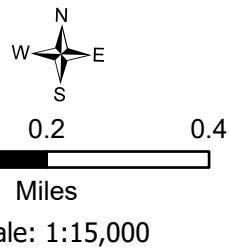


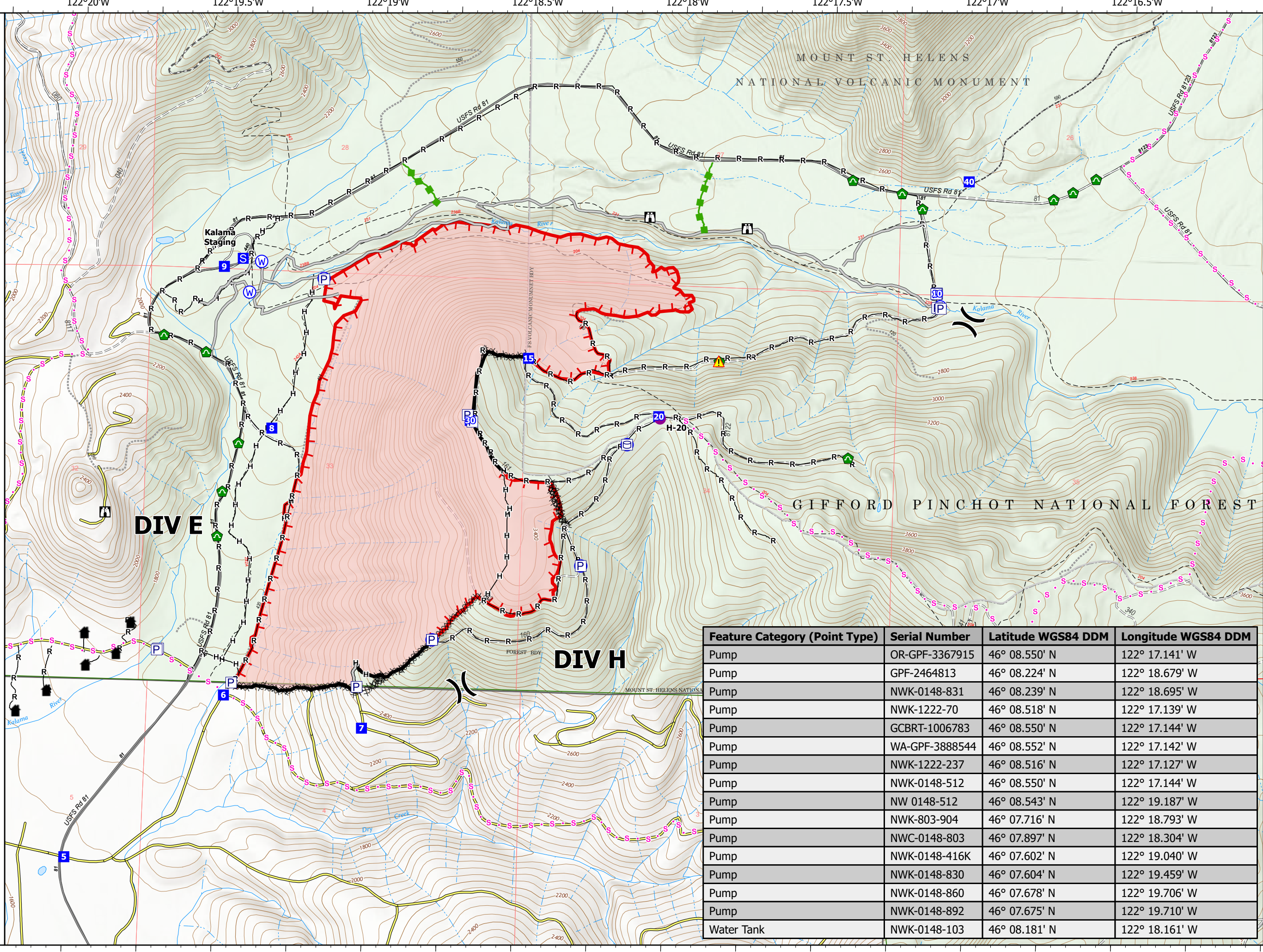
Accountable Property

Kalama
 WA-GPF-001028
 10/15/2022
 486 acres at 10/13/2022 1929
 IR

- Pump
- Water Tank
- Helispot
- Division Break
- Drop Point
- Staging Area
- Lookout
- Culvert
- Hazard
- Water Source
- Structure
- Completed Dozer Line
- Completed Hand Line
- Completed Road as Line
- Planned Secondary Line
- Access or Improved Road
- Escape Route
- Paved
- Gravel Road
- Unimproved Road
- Forest Service Roads Closed
- Private Road
- Contained
- Uncontained
- Wildfire Daily Fire Perimeter



10/14/2022 2210
 North American 1983 Datum, LatLong Grid



Feature Category (Point Type)	Serial Number	Latitude WGS84 DDM	Longitude WGS84 DDM
Pump	OR-GPF-3367915	46° 08.550' N	122° 17.141' W
Pump	GPF-2464813	46° 08.224' N	122° 18.679' W
Pump	NWK-0148-831	46° 08.239' N	122° 18.695' W
Pump	NWK-1222-70	46° 08.518' N	122° 17.139' W
Pump	GCBRT-1006783	46° 08.550' N	122° 17.144' W
Pump	WA-GPF-3888544	46° 08.552' N	122° 17.142' W
Pump	NWK-1222-237	46° 08.516' N	122° 17.127' W
Pump	NWK-0148-512	46° 08.550' N	122° 17.144' W
Pump	NW 0148-512	46° 08.543' N	122° 19.187' W
Pump	NWK-803-904	46° 07.716' N	122° 18.793' W
Pump	NWC-0148-803	46° 07.897' N	122° 18.304' W
Pump	NWK-0148-416K	46° 07.602' N	122° 19.040' W
Pump	NWK-0148-830	46° 07.604' N	122° 19.459' W
Pump	NWK-0148-860	46° 07.678' N	122° 19.706' W
Pump	NWK-0148-892	46° 07.675' N	122° 19.710' W
Water Tank	NWK-0148-103	46° 08.181' N	122° 18.161' W