

IAP SOUTH

Kalama
WA-GPF-001028
10/15/2022

486 acres
at 10/13/2022 1929
IR

- Structures
- Aerial Hazard
- Division Break
- Drop Point
- Lookout
- Water Source
- Completed Dozer Line
- Completed Hand Line
- Completed Road as Line
- Planned Secondary Line
- Access or Improved Road
- Contained
- Uncontained
- Private Road
- National Designated Trail
- Trail
- Paved
- Unimproved Road
- Forest Service Roads Closed
- Paved Roads
- Forest Service Land



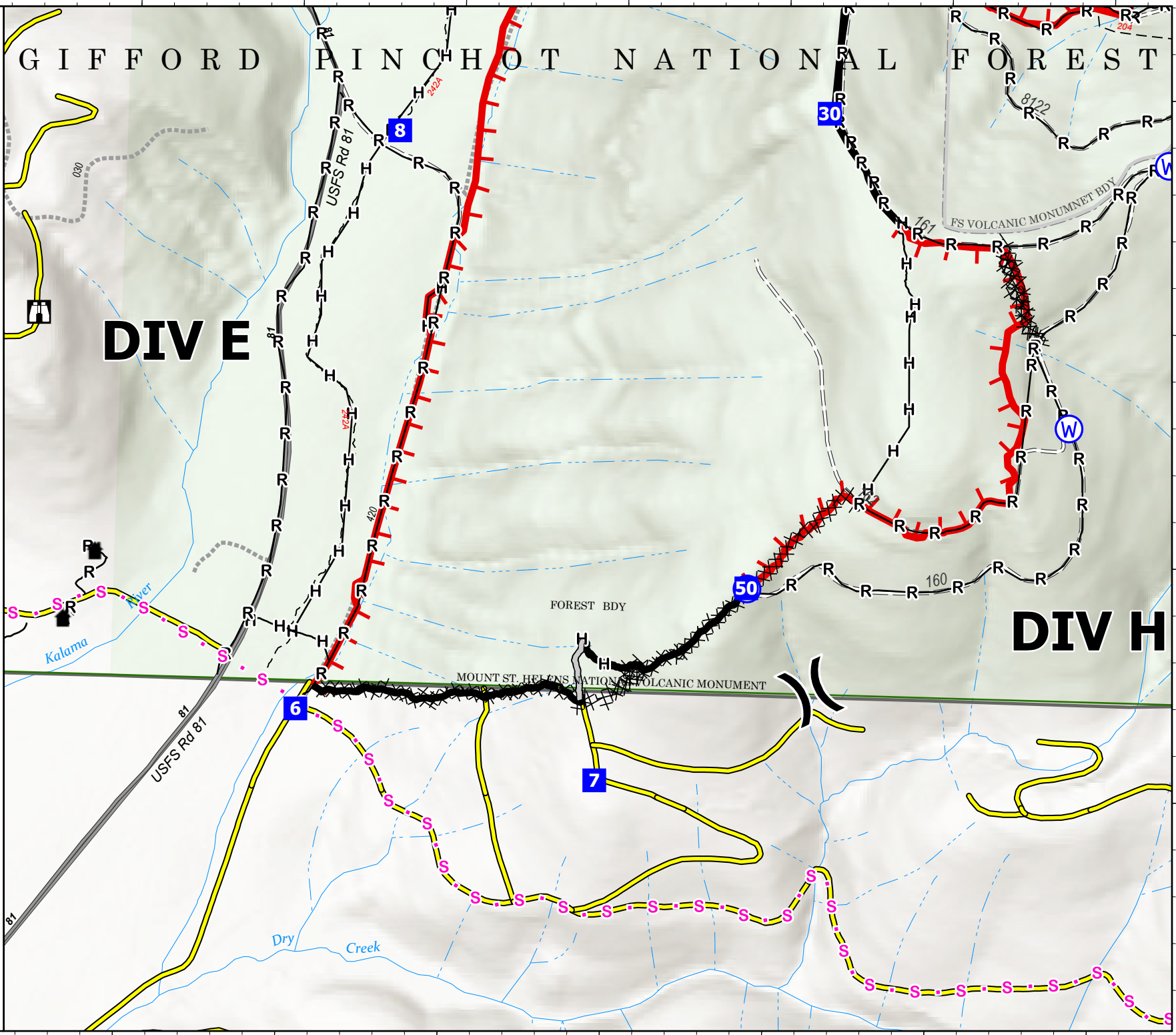
0 0.05 0.1



Miles
Scale: 1:10,000



10/14/2022 2208
North American 1983 Datum.
LatLong Grid



122°19.5'W

122°19'W

122°18.5'W

46°8'N

46°7.5'N