

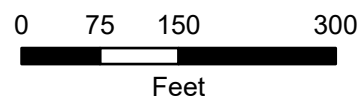
Operations South

Kalama
WA-GPF-001028
10/15/2022

486 acres at 10/13/2022 1929 IR

- Drop Point
- Completed Dozer Line
- H Completed Hand Line
- R Completed Road as Line
- S Planned Secondary Line
- Access or Improved Road
- Contained
- Uncontained
- / Trail
- Private Road
- ~ Paved
- Forest Service Roads Closed
- Wildfire Daily Fire Perimeter
- Forest Service Land
- NFS Lands Boundary

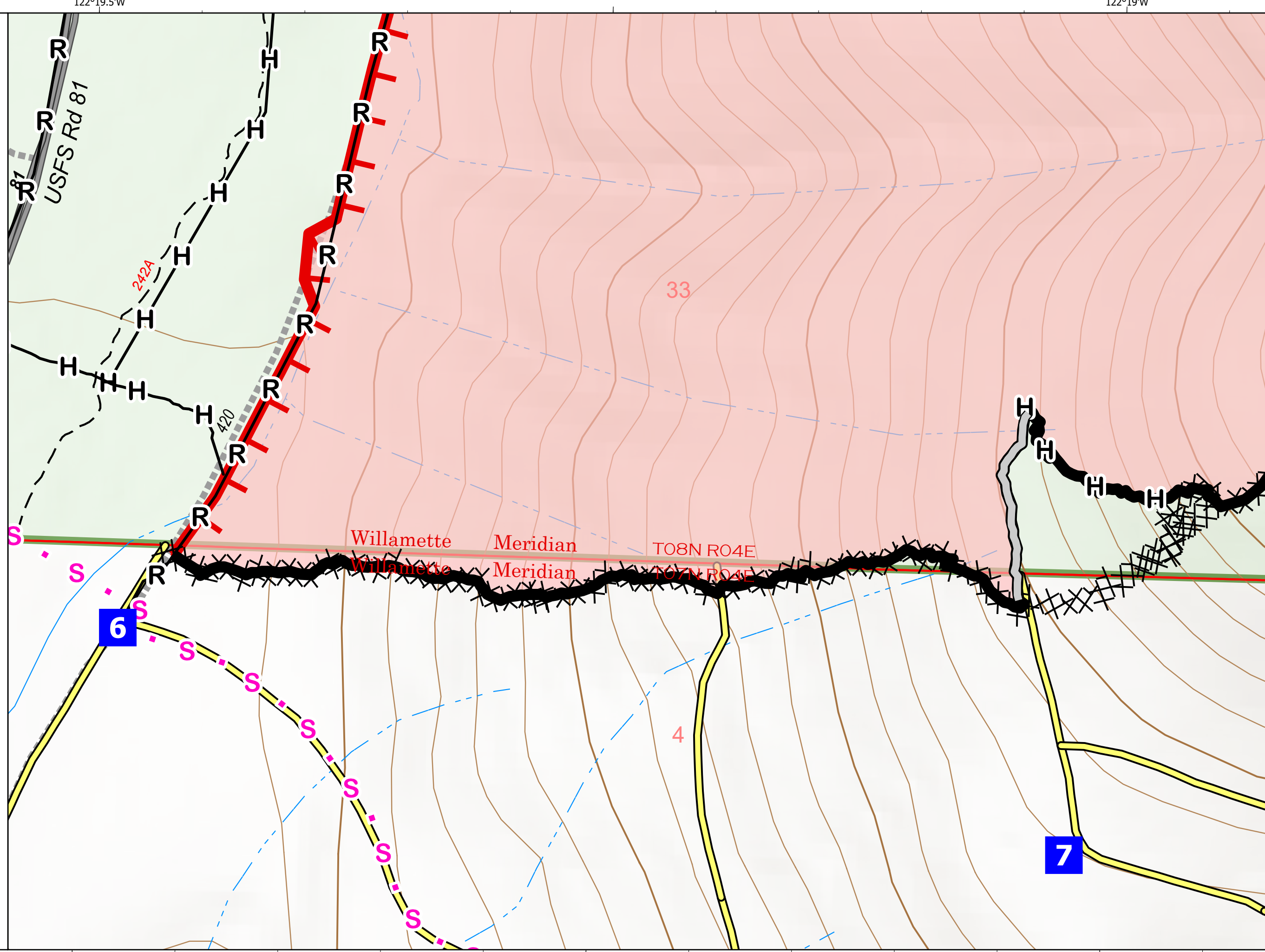
Owner	Area	Percentage
PVT	1.53	0.32
USFS	484.67	99.68



Scale: 1:2,200



10/14/2022 2209
North American 1983 Datum, LatLong Grid



122°19.5'W

122°19'W

46°7.5'N