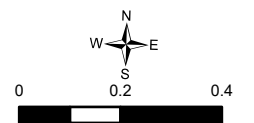


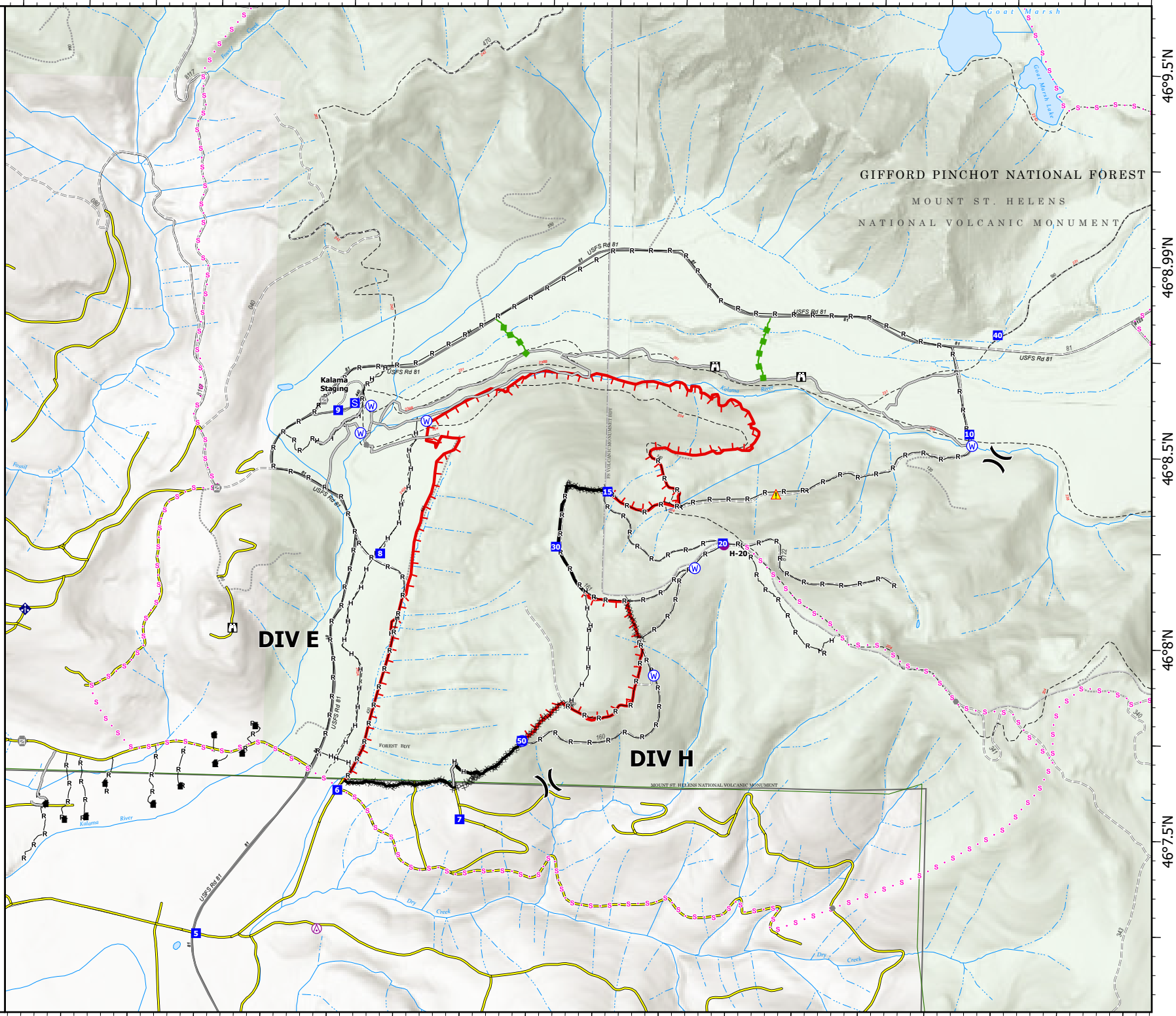
122°20.5'W 122°20'W 122°19.5'W 122°19'W 122°18.5'W 122°18'W 122°17.5'W 122°17'W 122°16.5'W

IAP
Kalama
WA-GPF-001028
10/16/2022
493 acres
at 10/15/2022 1919
IR

- Structures
- Aerial Hazard
- Helispot
- Division Break
- Drop Point
- Staging Area
- Lookout
- Other
- Gate
- Mobile Weather Unit
- Hazard
- Water Source
- Completed Dozer Line
- Completed Hand Line
- Completed Road as Line
- Planned Secondary Line
- Access or Improved Road
- Escape Route
- Contained
- Uncontained
- Private Road
- National Designated Trail
- Trail
- Paved
- Gravel Road
- Unimproved Road
- Forest Service Roads Closed
- Forest Service Land



10/16/2022 0136
North American 1983 Datum.
LatLong Grid



122°20.5'W 122°20'W 122°19.5'W 122°19'W 122°18.5'W 122°18'W 122°17.5'W 122°17'W 122°16.5'W

46°9.5'N
46°8.99'N
46°8.5'N
46°8'N
46°7.5'N

GIFFORD PINCHOT NATIONAL FOREST
MOUNT ST. HELENS
NATIONAL VOLCANIC MONUMENT