

120°45'0"W

120°44'0"W

120°43'0"W

120°42'0"W

120°41'0"W

120°40'0"W

120°39'0"W

120°38'0"W

47°58'0"N

47°57'0"N

47°56'0"N

47°58'0"N

47°57'0"N


47°56'0"N



**Infrared Map**



**Minnow Ridge**  
WA-OWF-000479

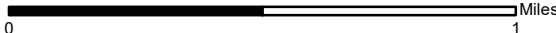
IR Flight: Oct. 03, 2022 2239 MDT  
Interpreter : Jim Grace  
Interpreted Acres = 2,757


Lat/Long  
GCS WGS84  
1 Min spacing

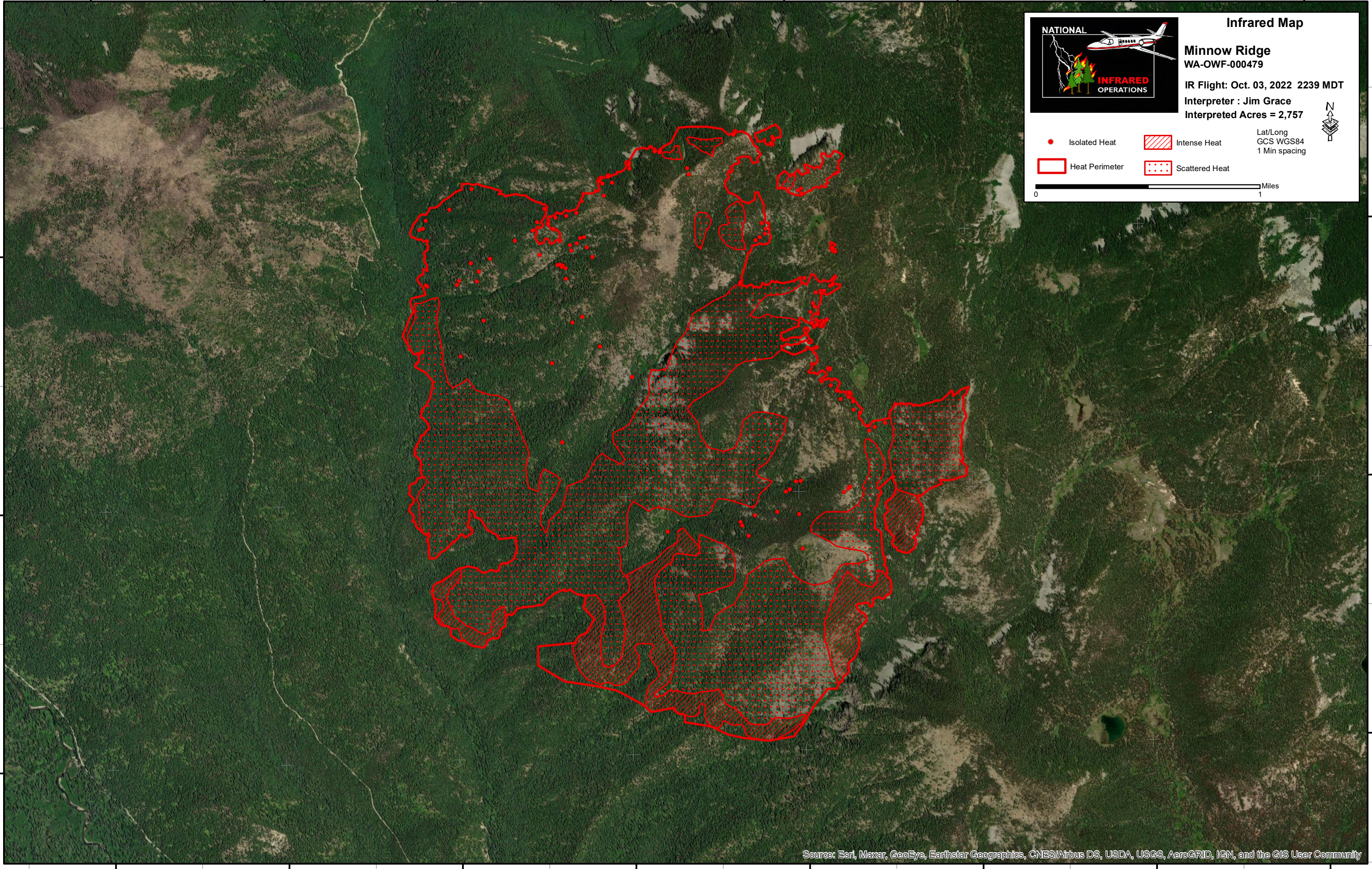


 Isolated Heat    
  Intense Heat

 Heat Perimeter    
  Scattered Heat

 Miles  
0 1





Source: Esri, Maxar, GeoEye, Earthstar Geographics, CNES/Airbus DS, USDA, USGS, AeroGRID, IGN, and the GIS User Community

120°45'0"W

120°44'0"W

120°43'0"W

120°42'0"W

120°41'0"W

120°40'0"W

120°39'0"W

120°38'0"W