

120°45'0"W

120°44'0"W

120°43'0"W

120°42'0"W

120°41'0"W

120°40'0"W

120°39'0"W

120°38'0"W

47°58'0"N

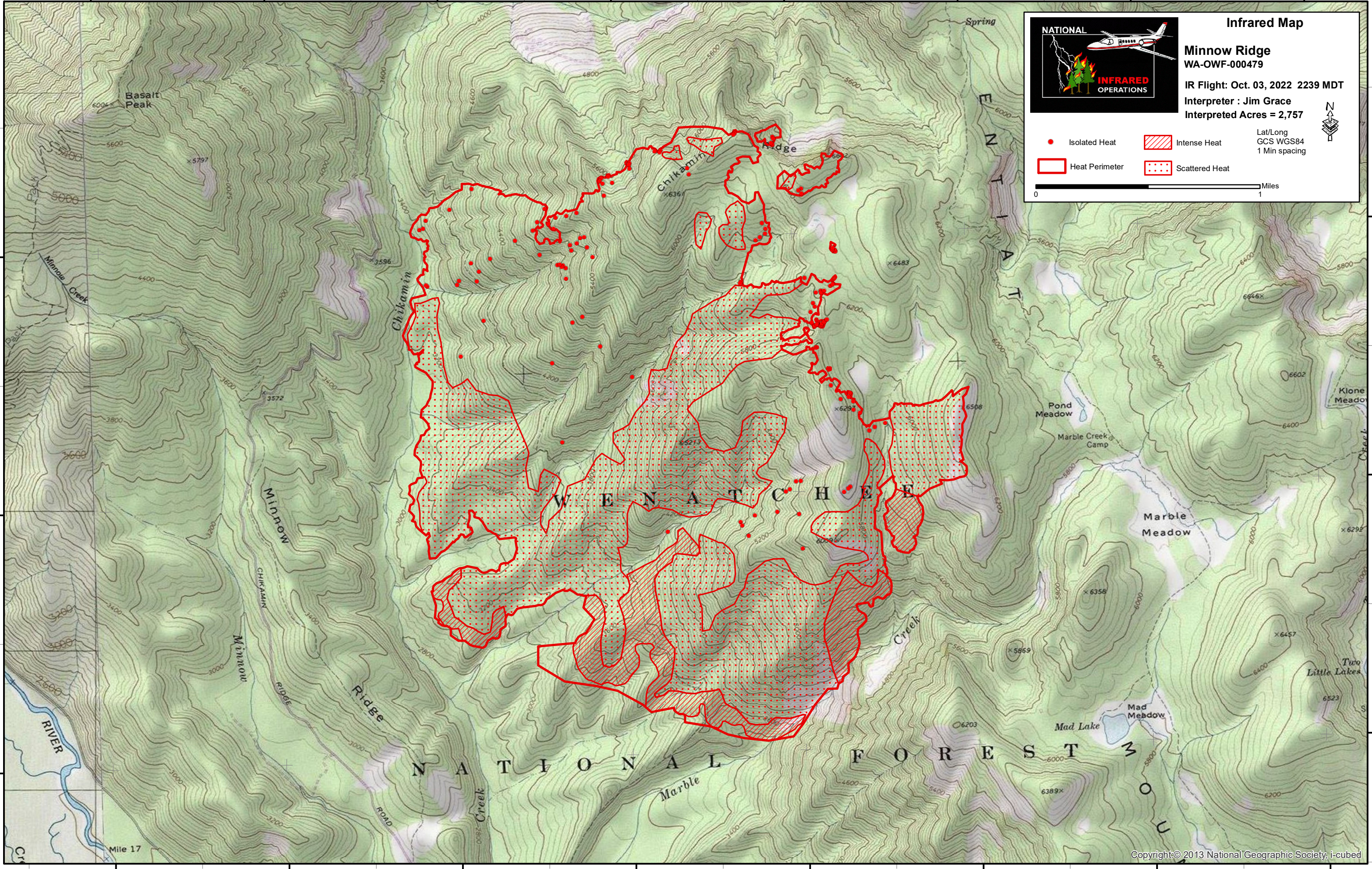
47°57'0"N

47°56'0"N

47°58'0"N

47°57'0"N

47°56'0"N



Infrared Map

NATIONAL

INFRARED OPERATIONS

Minnow Ridge
 WA-OWF-000479

IR Flight: Oct. 03, 2022 2239 MDT
 Interpreter : Jim Grace
 Interpreted Acres = 2,757

Lat/Long
 GCS WGS84
 1 Min spacing

● Isolated Heat Intense Heat
 Heat Perimeter Scattered Heat

0 1 Miles

120°45'0"W

120°44'0"W

120°43'0"W

120°42'0"W

120°41'0"W

120°40'0"W

120°39'0"W

120°38'0"W