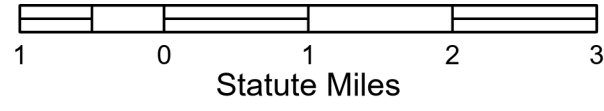


Air Operations

Nakia Creek
WA-PCS-0220
10/20/2022

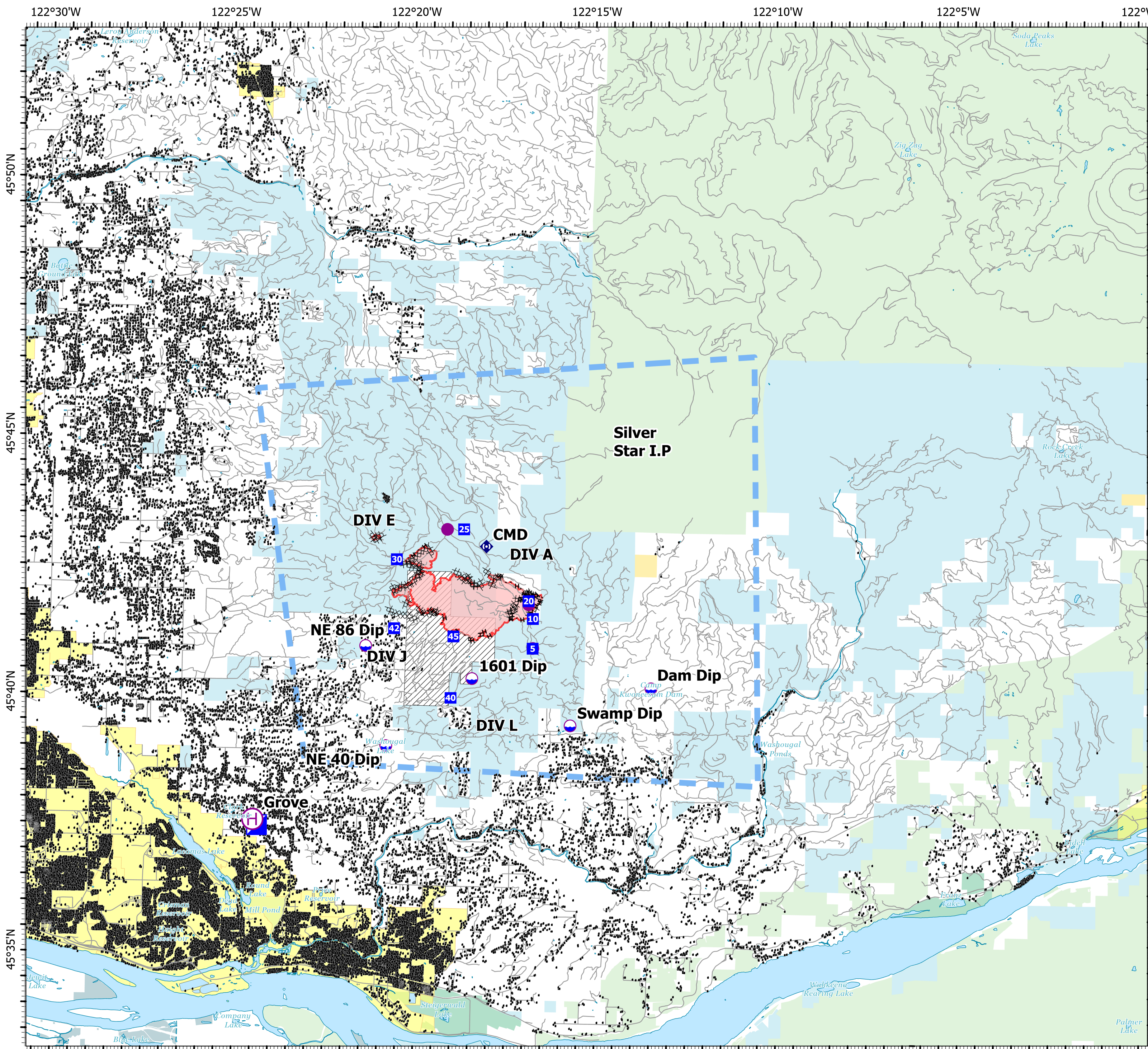
1,869 acres at 10/18/2022 @ 1853hrs



AIR / AIR FW: 123.4000
 AIR / AIR RW: 127.0250
 AIR / GROUND: 167.0750 Primary
 AIR / GROUND: 156.0225 PL103.5 Secondary
 COMMAND RPT: Rx: 170.4500 Tx: 168.1000
 Tone 136.5 123.00 Tone 123.00
 Air/ Ground IA
 DECK FREQ.: 163.1000

- Structures
- Dip Site
- Helispot
- ⊕ Helibase
- ▣ Incident Command Post
- Drop Point
- ◆ Repeater
- ⊗ Completed Dozer Line
- ⊔ Completed Hand Line
- ⊔ Completed Road as Line
- ▬ Temporary Flight Restriction
- ▬ Roads
- ▬ Interstate
- ▬ US Highway
- ▬ State Highway
- ▨ Camas Watershed
- Hydrography Areas
- ▬ Perennial Lake
- ▬ Nonearthen Reservoir
- ▬ Perennial Lake
- ▬ City Limit
- ▬ Bureau of Land Management (BLM)
- ▬ Local Government
- ▬ State
- ▬ US Fish and Wildlife Service (USFWS)
- ▬ US Forest Service (USFS)
- ▬ Private

FeatureCategory	Label	LatWGS84_DDM	LongWGS84_DDM
Aviation Check Point	Silver Star I.P	45° 44.784' N	122° 14.329' W
Dip Site	1601 Dip	45° 40.451' N	122° 18.078' W
Dip Site	Dam Dip	45° 40.327' N	122° 13.122' W
Dip Site	NE 40 Dip	45° 39.114' N	122° 20.409' W
Dip Site	NE 86 Dip	45° 41.045' N	122° 21.028' W
Dip Site	Swamp Dip	45° 39.572' N	122° 15.331' W
Drop Point	10	45° 41.629' N	122° 16.429' W
Drop Point	20	45° 41.972' N	122° 16.558' W
Drop Point	30	45° 42.726' N	122° 20.219' W
Drop Point	40	45° 40.066' N	122° 18.654' W
Drop Point	42	45° 41.392' N	122° 20.254' W
Drop Point	45	45° 41.258' N	122° 18.611' W
Drop Point	5	45° 41.055' N	122° 16.419' W
Helibase	Grove	45° 37.638' N	122° 24.044' W
Helispot	H-1	45° 41.058' N	122° 16.413' W
Helispot	H-2	45° 41.903' N	122° 16.555' W
Helispot	H-3	45° 43.326' N	122° 18.839' W
Incident Command Post	ICP	45° 37.530' N	122° 23.927' W
Repeater	CMD	45° 43.011' N	122° 17.752' W



ODF IMT 2
10/19/2022 2203
North American 1983 Datum
Lat Long Grid

