

- INCIDENT ACTION PLAN -

# Vantage Highway

## Cow Canyon



### Vantage Highway

WA-SES-000263

PN PX8Y (1522)

221-CBA

### Cow Canyon

WA-SES-000277

PN PYS3 (1522)

221-CBB



**DOWNLOAD  
IAP and MAPS**



**SCAN QR for BRIEFING  
OR  
ZOOM PHONE IN  
+1 253 215 8782  
Meeting ID: 886 8227  
5977  
Passcode: 830227**

**Dayshift - August 7, 2022 - 0600-1800**

**Nightshift - August 7/8, 2022 - 1800-0600**




This page intentionally left blank.



## INCIDENT OBJECTIVES (ICS 202)

<b>1. Incident Name:</b>	<b>2. Operational Period: 0600-0600</b>	
VANTAGE HIGHWAY / COW CANYON	Date/Time From: 08/07/2022 0600      SUN	Date/Time To: 08/08/2022 0600      MON
<b>3. Objective(s):</b>		
<ul style="list-style-type: none"> <li>• Provide for firefighter and public safety using the Deliberate Risk Analysis process and implement reasonable mitigations for identified hazards.</li> <li>• Minimize impacts to communities, infrastructure, and acres burned on private lands.</li> <li>• Protect tribal, cultural, aquatic and wildlife resources, and sensitive plant sites.</li> <li>• Provide Initial Attack response and assistance for private and public lands within the delegated area.</li> <li>• Maintain and enhance relationships with cooperators, stake holders, landowners, and communities by providing accurate and timely information.</li> <li>• Manage cost commensurate with values at risk and maintain fiscal accountability.</li> <li>• Treat each other with dignity and respect and act in a professional manner while on the fire and in the community.</li> <li>• Ensure COVID-19 best management practices are in place and follow local CDC guidelines.</li> </ul>		
<b>4. Operational Period Command Emphasis:</b>		
Implement firefighting tactics to minimize fire growth with the greatest chance of success and the least amount of risk to firefighter and aviation resources as practical to meet incident objectives.		
<b>General Situational Awareness:</b>		
Fighting fire in light flashy fuels under hot, dry, and windy conditions poses great potential for rapid fire growth. Anticipate changes in fire behavior before it happens and ensure Lookouts, Communications, Escape Routes, and Safety Zones are adequate. Maintain accountability of all assigned resources while engaged on the fire line.		
<b>5. Site Safety Plan Required?</b> Yes <input type="checkbox"/> No <input checked="" type="checkbox"/>		
<b>Approved Site Safety Plan(s) Located</b>		
<b>6. Incident Action Plan</b> (the items checked below are included in this Incident Action Plan):		
<input checked="" type="checkbox"/> ICS 202 <input checked="" type="checkbox"/> ICS 203 <input checked="" type="checkbox"/> ICS 204 <input checked="" type="checkbox"/> ICS 205 <input type="checkbox"/> ICS 205A <input checked="" type="checkbox"/> ICS 206	<input type="checkbox"/> ICS 207 <input type="checkbox"/> ICS 208 <input checked="" type="checkbox"/> ICS 220 <input checked="" type="checkbox"/> Map/Chart <input checked="" type="checkbox"/> Weather Forecast/Tides/Currents	<b>Other Attachments:</b> <input checked="" type="checkbox"/> HUMAN RESOURCE MESSAGE <input checked="" type="checkbox"/> UNIT LOG <input type="checkbox"/> _____ <input type="checkbox"/> _____
<b>7. Prepared by:</b> MIKE CHARTER	<b>Position/Title:</b> PSC2	<b>Signature:</b> <i>Mike Charter</i>
<b>8. Approved by Incident Commander:</b>	<b>Name:</b> BOBBY SHINDELAR	<b>Signature:</b> <i>Bobby Shindelar</i>
<b>ICS 202</b>	<b>IAP Page</b>	<b>Date/Time:</b> 08/06/2022 2000

## ORGANIZATION ASSIGNMENT LIST (ICS 203)

<b>1. Incident Name:</b>		<b>2. Operational Period: DAY / NIGHT</b>	
VANTAGE HIGHWAY / COW CANYON		Date/Time From: 08/07/2022 0600	SUN
		Date/Time To: 08/08/2022 0600	MON
<b>3. Incident Commander(s) and Command Staff:</b>		FACILITIES UNIT	CALVIN OHLSON-KIEHN WHIT SPENCER (T)
IC/UC	JEFF DIMKE	GROUND SUPPORT UNIT	DAVE HARSH
DEPUTY	BOBBY SHINDELAR	COMMUNICATIONS UNIT	MISSY PARKER
SAFETY OFFICER	JACK CATES; TAIJA CORSO	MEDICAL UNIT	EAMONN RYAN LEE VENNING ;JOSH ALEXANDER (T)
INFORMATION OFFICER	JOEL BRUMM LIV STECKER (T)	FOOD UNIT	ALEX LILLA
LIAISON OFFICER	SCOTT CRAWFORD TIMOTHY MCKERN	SECURITY UNIT	
HUMAN RESOURCE SPECIALIST	SUSIE MANEZES		
		<b>7. Operations Section:</b>	
<b>4. Agency/Organization Representative(s):</b>		OPS SECTION CHIEF	AARON ROWE; KURT RANTA (T) CODY ACORD (T)
<b>Agency/Organization</b>	<b>Name</b>	PLANNING OPS	JEFF BOUSCHOR JEROMY WILSON (T)
BLM	CHRIS SHERIDAN	STRATEGIC OPS	TONY ENGEL
DNR	TODD WELKER		
WDFW - WHICKEY DICK/QUILOMENE	HANNAH BATES	DIVISION/GROUP	A/Z (VANTAGE HWY) MILES POLLACK
WDFW - COLOCKUM	PETE LOPUSHINSKI	DIVISION/GROUP	E (VANTAGE HWY) SAM STEINSHOUER
WDFW - WENAS	MELINDA HUGHES	DIVISION/GROUP	M (VANTAGE HWY) BOB HINDS
KVFR	JOHN SINCLAIR	DIVISION/GROUP	C (COW CANYON) MATT KENNEDY CARSON ZEPP (T)
KITTITAS CO EMERG MGMT	DARREN HIGASHIAMA	DIVISION/GROUP	L (COW CANYON) TED HARGRAVES IAN MCCORD (T)
YAKIMA CO EMERG MGMT	TONY MILLER	DIVISION/GROUP	W (COW CANYON) BRIAN CAMPBELL
BLM READ (VANTAGE HWY)	ERIC ELLIS CLARINDA WILSON	DIVISION/GROUP	STRUCTURE (COW CANYON) RICK WOODALL
<b>5. Planning Section:</b>		DIVISION/GROUP	NIGHT (COW CANYON) LARRY LEACH
CHIEF	MIKE CHARTER	<b>7b. Air Operations Branch:</b>	
RESOURCES UNIT	JILL JOHNSON	AIR OPS BRANCH DIRECTOR	PAUL BALFOUR
SITUATION UNIT	DAVE WISCHER	AIR SUPPORT SUPERVISOR	TIM LYDA
DOCUMENTATION UNIT			
DEMOBILIZATION UNIT	MIKE HESTON	<b>8. Finance/Administration Section:</b>	
FIRE BEHAVIOR ANALYST	DON STRAND	CHIEF	CHERI FULLER; SARAH THORSON (T) CHRISTINA GOEBEL
TRAINING SPECIALIST	HANK FALCON	TIME UNIT	CAROL LONG STEVE CROW (T)
GIS SPECIALIST	SHAWN BUSHNELL MIKE TONKEL (T)	PROCUREMENT UNIT	MARK BOHNET
TECHNOLOGY SUPPORT SPECIALIST	GEORGE JENKINS DAVE JOHNSON	COST UNIT	KAY HIGH (VIRTUAL)
INCIDENT METEOROLOGIST	BOB TOBIN	COMPENSATION UNIT	
<b>6. Logistics Section:</b>			
CHIEF	KEVIN HAUGHTON		
SUPPLY UNIT	JOHN KAUPA		
<b>9. Prepared By:</b>	<b>Name:</b> JILL JOHNSON	<b>Position/Title:</b> RESL	<b>Signature:</b> 
ICS 203	IAP Page	<b>Date/Time:</b> 08/06/2022 2000	

## Fire Weather Forecast

**FORECAST NO:** 3  
**PREDICTION FOR:** Sunday  
**Shift Date:** August 7, 2022  
**TIME AND DATE**

**INCIDENT:** Cow Canyon-Vantage Highway Fires  
**UNIT:** DNR  
**SIGNED:** Bob Tobin  
**Incident Meteorologist (IMET)**

**FORECAST ISSUED:** 8/06/2022 at 2000

*Bob Tobin*

---

**Weather Discussion:** Weak high pressure over the region will flatten out slightly Sunday in response to an upstream wave. However, Temperatures will still increase both Sunday and Monday with highs pushing 100 degrees. Very dry air will also move over the region for low relative humidity. By Late in the day Tuesday the region will begin to feel the effects of a closed low moving in from the south. Expect increasing chances for showers and thunderstorms Tuesday night and Wednesday, as well as, cooler temperatures.

### **WEATHER FORECAST:**

#### **Today:**

**SKY/WEATHER:** Sunny and a little warmer.

**High Temperature...**82-87 on Cow Canyon...89-92 on Vantage Highway.

**Min RH.....**12-16% on Cow Canyon...10-15% on Vantage Highway.

**20-FOOT WINDS:** Southeast 5-10 mph...this is mainly upslope.

**CWR (>=0.10")....** 0%    **LAL....**1.    **Haines Index...4** (Low)    **Mixing Height...6000** ft AGL

#### **Tonight:**

**SKY/WEATHER:** Clear...Areas of smoke will cause visibility challenges.

**Low Temperature...**58-62 on Cow Canyon...67-72 on Vantage Highway.

**Max RH.....**38-42% on Cow Canyon...25-30% on Vantage Highway.

**20-FOOT WINDS:** Becoming west-northwest 6-10 mph after 2100.

**CWR (>=0.10")....**0%    **LAL...1.**    **Inversion: Becoming strong after 2000.**

#### **Monday:**

**SKY/WEATHER:** Sunny and warm.

**High Temperature...**87-92 on Cow Canyon...93-100 on Vantage Highway.

**Min RH.....**10-15% on Cow Canyon...10-15% on Vantage Highway.

**20-FOOT WINDS:** Upslope (Southeast-south) 5-9 mph after 1100.

**CWR (>=0.10")....**0%    **LAL....1**    **Haines Index...4** (Low)    **Mixing Height...10000** ft AGL

#### **Extended Outlook**

**Tuesday...** Sunny. Increasing clouds through the afternoon. Low: 65-75...High: 92-102. Min RH: 12-16%  
Winds: East-southeast 5-10 mph with gusts to 12 mph.

**Wednesday...**A chance of showers and thunderstorms. Low: 60-70...High: 85-95. Min RH: 25-35% Winds:  
Southwest-west 10-12 mph. with gusts to 25 mph.

# FIRE BEHAVIOR FORECAST

FORECAST NUMBER: 3	TYPE OF FIRE: WILDFIRE
FIRE NAME: Cow Canyon, Vantage Highway	OPERATIONAL PERIOD: DAY/NIGHT 8/7-8, 2021
DATE ISSUED: Aug. 6 2022	TIME ISSUED: 2000 HOURS
UNIT: SES	SIGNED: ___ DON STRAND, FBAN _____

## INPUTS

**WEATHER SUMMARY:** See attached spot weather forecast. Max temp near 90's. Min RH near 10-12%. Winds Southeast 5 to 10 mph, mainly upslope.

**FUELS:** Cow Canyon - grass and brush with timber and brush stringers in draws with larger pockets of timber on northern aspects. Note-Fuel loading in grass fuels is much higher than recent years. Fuel moistures are dry with herbaceous estimated to be partially cured but dry enough to carry fire in most areas. Woody fuels are dry enough for fire spread.

Vantage Highway – Grass fuels are cured and brush fuels are mostly cured. Note- fuel loading in grass fuels is much higher than past years.

Energy Release Component for the area fires are near the 95 to 97th<sup>th</sup> percentile.

## OUTPUTS

### FIRE BEHAVIOR

**GENERAL:** Fire behavior potential continues to increase due to warming and drying. Also due to current fuel and weather conditions, the burning period is increasing. Expect fire spread by backing and flanking with potential for torching in areas of interior unburned fuels or where fire lines are indirect. In areas where there is wind/slope alignment, potential for upslope runs still exists. In grass and brush fuels, expect higher rates of spread and high resistance to control. Potential for spotting exists with any torching. Most spotting should be short range with max spotting distance near 0.3 miles and a probability of ignition of 90 %.

Head fire rates of spread in the grass/sage will be approaching 60 feet/minute. In the timber fuels, rates of spread will be near 20 feet per minute with single and group torching.

### SPECIFIC:

**Night Shift:** Fire will remain active in the mid to upper slopes in the thermal belt. Conditions will support burnout. Spotting potential will diminish after dark.

**Cow Canyon - DIV C:** Continue to watch for spots from previous burnout operation. Interior unburned islands will continue to clean up – if near fire lines, potential for spotting exists. Timber stringers along the north flank may align with the forecasted SE wind.

**DIV L:** Expect interior island to continue to clean up with potential for torching and spotting. Timber stringers on the north flank of division may have alignment with the SE wind.

**DIV W:** Opportunity for flare up and spotting in areas of dirty burn exist.

Vantage Highway – DIV A, E and M: Interior islands of unburned may continue to clean up and if near control lines, there still some potential for short range spotting.

**Initial Attack:** In the event resources respond to a new start, update your Situational Awareness by observing the fuels, weather, and topography where the new fire is located. Rates of spread may be different than what you've recently observed.

**AIR OPERATIONS:** Expect areas of smoke haze through the day.

## SAFETY

Light grass/brush fuels are very sensitive to slight changes in wind and or slope and can be smoldering one minute and running the next with 5 to 7 feet flame lengths. Spot fires can initiate quickly and spread rapidly.

With the hot weather, light winds and burned ground, dust devil development is likely. If they move across any hot spots near fire lines, they could be a means to cause spot fires.

Rolling debris on steeper slopes has potential to carry burning material down slope.

# Safety Message

7-8 August 2022

**INCIDENT: VANTAGE HIGHWAY/COW CANYON**

**OPERATIONAL PERIOD: 0600-0600**

## TOPICS:

### DRIVING

Driving safety is critical; some areas on the incident have narrow roads with limited sight distance and minimal turnouts. Livestock has been spotted frequently along the roads on the Vantage Hwy Fire. With movement of heavy equipment, be aware of lowboy traffic. Practice defensive driving. Drive with your lights on. Rotate drivers if needed due to fatigue. Always chock tires when parked and have a spotter when backing. Limit speeds at Basecamp to less than **5mph**.

### MISSION CREEP

Mission Creep is the expansion of a mission or task beyond original objectives or assignment. In our business this is most often undesirable unless serious life considerations are at risk. Many times, Mission Creep will continue once started until catastrophic failure or undesirable outcomes are encountered. Plans are built based on set and measurable objectives. Stay in your lane and avoid the urge to creep!



**Is the Risk Worth the Gain?**

**If you can't mitigate the hazard and do it safely, Don't Do It.**

**SAFETY OFFICER: Jack Cates, Taija Corso**

## Deliberate Risk Assessment-Hazard Summary

### 7-8 August 2022

Hazard	Mitigation	Post Risk
Extraction Time	Identify medivac sites and helispots. Initiate ground transport to accident site. Identify EMT's from resources assigned to division. Provide line qualified paramedics to each division as available. Review IWI protocol to ensure familiarity. Utilize short haul in remote areas. Evaluate on-going need for repositioning medical personnel.	High
Snags	Use avoidance to limit exposure time. Snag to avoid exposure. Use qualified fallers and blasting if needed. Conduct on- going risk analysis of all work areas. Follow Hazard Tree Safety Guidelines (IRPG page 20).	High
Transportation	Signing of all incident roads that provide access to divisions. Daily updated travel plan maps. Practice defensive driving. In local communities obey the posted speed limits. Use reader boards to control entry as needed. Identify and evaluate contingency and alternate escape and travel routes, implement controls as needed.	High
Heavy Equipment	Post lookouts around equipment work areas. Establish communications with equipment boss and operator. Do not work down slope from equipment.	High
Aircraft	Utilize Air Attack. Ensure all resources are a safe distance from all bucket and retardant drops. Establish LCES. Utilize air to ground primary radio channel. Reference IRPG (Safe aircraft operations pg. 61). Ensure IA resources have coordination with unassigned local air resources to provide deconfliction.	High
Public Interaction	Implement road and area closures in and adjacent to the perimeter.	Moderate
Unburned Fuels/Firing Ops	Establish LCES. Ensure management action points are implemented and followed. Weather updates as needed during burning operations. Locate indirect firelines to minimize the amount of unburned fuels. Follow Interagency Ignition Guide. Ensure communications between all firing operations. Establish road security at all firing sites. Follow approved firing plan for unburned fuels.	Moderate
Steep Terrain/Gravity	Do not work crews above or below each other. Post lookouts for rolling material. Watch footing in loose soil, rock and around vegetation. Do not work below heavy equipment. Scout and identify travel routes. Establish LCES.	Moderate
Physical Factors	Maintain hydration schedule. Closely monitor work rate and implement rest periods. Maintain nutrition. Ensure adequate work/rest.	Moderate
Environmental Factors	Assign medical personnel to camp. Assess for known allergies and report to medical personnel. Obtain Bee Bopper/wasp spray and yellow jacket traps. Locate dumpsters/trash, food and feeding areas away from sleeping and assembly areas.	Moderate
Fire Behavior	Be aware of burn windows, min/max RH for local conditions. Obtain hourly weather conditions from each Division.	Moderate
Structure Protection	Identify and report compromised service poles and maintain one span avoidance area. Identify downed lines. Treat all lines as live. Identify and avoid vehicles, tires, propane tanks.	Moderate
Initial Attack	Ensure identified IA resources are briefed of expectations and ensure communication plan is provided. Ensure resources are briefed on IA command structure. Provide identified crews with area maps.	Low
COVID Viral Transmission	Maintain awareness of health and perform self-checks. Report and isolate if symptomatic. Coordinate with Kittitas County Public Health for testing, reporting and isolation as needed. <b>Follow agency policy for symptomatic or positive test personnel or public health directions, whichever is more stringent.</b>	Low



## Division/Group Assignment List (ICS 204 WF)

Controlled Unclassified Information//Basic

<b>1. Incident Name:</b>				<b>3.</b>		
VANTAGE HIGHWAY / COW CANYON				<b>Branch:</b>	<b>Division/Group</b>	
<b>2. Operational Period: DAY / NIGHT</b>						
Date/Time From: 08/07/2022 0600      SUN		Date/Time To: 08/08/2022 0600      MON		<b>A/Z (VANTAGE)</b>		
<b>4. Operations Personnel</b>						
<b>OPERATIONS CHIEF</b>		AARON ROWE CODY ACORD (T)		<b>DIVISION/GROUP SUPERVISOR</b>		MILES POLLACK
<b>AIR ATTACK SUPERVISOR</b>		TIM LYDA		<b>SAFETY OFFICER</b>		JACK CATES; TAIJA CORSO
<b>5. Resources Assigned this Period</b>						
Strike Team / Task Force / Resource Designator		LWD	Leader	Number Persons	Drop Off PT./Time	Pick Up PT./Time
O-28 SOFR		08/16	MARY HUELS	1	KITTITAS/0600	KITTITAS/1800
C-6 CR2I USFS BOISE		08/16	CHRISTOPHER KNIGHT	19	KITTITAS/0600	KITTITAS/1800
E-32 AMBU AMR ALS		08/16	JACOB AMBACH	2	KITTITAS/0600	KITTITAS/1800
<b>6. Control Operations/Work Assignments:</b>						
<p>TASK: Mop up and cold trail fireline.          PURPOSE: Contain fire edge.          END STATE: No flames or smokes are found that are a threat to escape the fireline.</p>						
<b>7. Special Instructions:</b>						
<b>8. Division/Group Communication Summary</b>						
Function	Channel	RX Frequency N/W	RX Tone/NAC	TX Frequency N/W	TX Tone/NAC	Mode
COMMAND	3	168.4750	156.7	165.4000	156.7	A
TACTICAL	7	166.7750	107.2	166.7750	107.2	A
AIR TO GROUND	14	169.2000		169.2000		A
AIR TO GROUND	15	167.9500		167.9500		A
<b>9. Prepared By (Resource Unit Leader)</b>			<b>Approved By (Planning Section Chief)</b>		<b>Date</b>	<b>Time</b>
JILL JOHNSON			MIKE CHARTER		08/06/2022	2000

**Division/Group Assignment List (ICS 204 WF)**  
**Controlled Unclassified Information//Basic**

<b>1. Incident Name:</b>				<b>3.</b>		
VANTAGE HIGHWAY / COW CANYON				<b>Branch:</b>	<b>Division/Group</b>  E (VANTAGE)	
<b>2. Operational Period: DAY / NIGHT</b>						
Date/Time From: 08/07/2022 0600      SUN		Date/Time To: 08/08/2022 0600      MON				
<b>4. Operations Personnel</b>						
<b>OPERATIONS CHIEF</b>		AARON ROWE CODY ACORD (T)		<b>DIVISION/GROUP SUPERVISOR</b>		SAM STEINSHOUER
<b>AIR ATTACK SUPERVISOR</b>		TIM LYDA		<b>SAFETY OFFICER</b>		JACK CATES; TAIJA CORSO
<b>5. Resources Assigned this Period</b>						
Strike Team / Task Force / Resource Designator		LWD	Leader	Number Persons	Drop Off PT./Time	Pick Up PT./Time
O-28 SOFR		08/16	MARY HUELS	1	KITTITAS/0600	KITTITAS/1800
O-9 HEQB (T)		08/14	ANDREW NAUGHTON	1	KITTITAS/0600	KITTITAS/1800
C-2 CRW2 DNR CASCADE		08/16	JOHN MOON	20	KITTITAS/0600	KITTITAS/1800
O-25 EMTF		08/15	DREW PERRY	1	KITTITAS/0600	KITTITAS/1800
<b>6. Control Operations/Work Assignments:</b>						
TASK: Mop up and cold trail fireline. PURPOSE: Contain fire edge. END STATE: No flames or smokes are found that are a threat to escape the fireline.						
<b>7. Special Instructions:</b>						
<b>8. Division/Group Communication Summary</b>						
Function	Channel	RX Frequency N/W	RX Tone/NAC	TX Frequency N/W	TX Tone/NAC	Mode
COMMAND	3	168.4750	156.7	165.4000	156.7	A
TACTICAL	7	166.7750	107.2	166.7750	107.2	A
AIR TO GROUND	14	169.2000		169.2000		A
AIR TO GROUND	15	167.9500		167.9500		A
<b>9. Prepared By (Resource Unit Leader)</b>			<b>Approved By (Planning Section Chief)</b>		<b>Date</b>	<b>Time</b>
JILL JOHNSON			MIKE CHARTER		08/06/2022	2000

## Division/Group Assignment List (ICS 204 WF)

Controlled Unclassified Information//Basic

<b>1. Incident Name:</b>				<b>3.</b>		
VANTAGE HIGHWAY / COW CANYON				<b>Branch:</b>	<b>Division/Group</b>	
<b>2. Operational Period: DAY / NIGHT</b>						
Date/Time From: 08/07/2022 0600      SUN		Date/Time To: 08/08/2022 0600      MON		<b>M (VANTAGE)</b>		
<b>4. Operations Personnel</b>						
<b>OPERATIONS CHIEF</b>		AARON ROWE CODY ACORD (T)		<b>DIVISION/GROUP SUPERVISOR</b>		BOB HINDS
<b>AIR ATTACK SUPERVISOR</b>		TIM LYDA		<b>SAFETY OFFICER</b>		JACK CATES; TAIJA CORSO
<b>5. Resources Assigned this Period</b>						
Strike Team / Task Force / Resource Designator		LWD	Leader	Number Persons	Drop Off PT./Time	Pick Up PT./Time
O-28 SOFR		08/16	MARY HUELS	1	KITTITAS/0600	KITTITAS/1800
O-27 EMTF		08/16	MICHAEL SCHMIDTGALL	1	KITTITAS/0600	KITTITAS/1800
<b>6. Control Operations/Work Assignments:</b>						
TASK: Mop up and cold trail fireline.						
PURPOSE: Contain fire edge.						
END STATE: No flames or smokes are found that are a threat to escape the fireline.						
<b>7. Special Instructions:</b>						
<b>8. Division/Group Communication Summary</b>						
Function	Channel	RX Frequency N/W	RX Tone/NAC	TX Frequency N/W	TX Tone/NAC	Mode
COMMAND	3	168.4750	156.7	165.4000	156.7	A
TACTICAL	5	168.6000	107.2	168.6000	107.2	A
AIR TO GROUND	14	169.2000		169.2000		A
AIR TO GROUND	15	167.9500		167.9500		A
<b>9. Prepared By (Resource Unit Leader)</b>			<b>Approved By (Planning Section Chief)</b>		<b>Date</b>	<b>Time</b>
JILL JOHNSON			MIKE CHARTER		08/06/2022	2000

**Division/Group Assignment List (ICS 204 WF)**  
**Controlled Unclassified Information//Basic**

<b>1. Incident Name:</b>			<b>3.</b>			
COW CANYON			<b>Branch:</b>		<b>Division/Group</b>	
<b>2. Operational Period: DAY/NIGHT</b>			<b>C (COW CANYON)</b>			
Date/Time From: 08/07/2022 0600      SUN		Date/Time To: 08/08/2022 0600      MON				
<b>4. Operations Personnel</b>						
<b>OPERATIONS CHIEF</b>		AARON ROWE KURT RANTA (T);		<b>DIVISION/GROUP SUPERVISOR</b>		MATT KENNEDY CARSON ZEPP (T)
<b>AIR ATTACK SUPERVISOR</b>		TIM LYDA		<b>SAFETY OFFICER</b>		JACK CATES; TAIJA CORSO
<b>5. Resources Assigned this Period</b>						
Strike Team / Task Force / Resource Designator		LWD	Leader	Number Persons	Drop Off PT./Time	Pick Up PT./Time
O-30.71 SOF2		08/18	JOSH NORTHRUP	1	NACHES/0600	NACHES/1800
O-2 (V) TFLD		08/14	MATHEW CALDWELL	1	NACHES/0600	NACHES/1800
O-3 (V) TFLD (T)		08/14	BRIAN WILLIAMS	1	NACHES/0600	NACHES/1800
O-17 HEQB (T)		08/17	PAXTON STONE	1	NACHES/0600	NACHES/1800
O-48 HEQB (T)		08/20	JASON BUDA	1	NACHES/0600	NACHES/1800
O-59 (V) HEQB		08/20	CHRIS HARTELOO	1	NACHES/0600	NACHES/1800
C-9 CR2I GILA HOTSHOTS IHC		08/19	MICHEAL HEAD	20	NACHES/0600	NACHES/1800
C-11 CRW1 ROGUE RIVER IHC		08/14	AARON SCHUH	20	NACHES/0600	NACHES/1800
C-13 CRW1 ENTIAT IHC		08/20	DANIEL E PICKARD	22	NACHES/0600	NACHES/1800
C-6 CRW2 P.R. REFORESTATION		08/17	JESUS RAMIREZ	20	NACHES/0600	NACHES/1800
C-10 CRW WENATCHEE RV 74		08/14	BEN MARQUART	22	NACHES/0600	NACHES/1800
C-12 CRW2 TJ FORESTRY CONTR			VICTOR PEREZ	20	NACHES/0600	NACHES/1800
C-15 (V) CR2I PATRICK ENVIRONMENTAL		08/13	JOSH BURNAY	20	NACHES/0600	NACHES/1800
E-13 ENG3 BAILEY ENTERPRISES		08/17	GREG BAILEY	3	NACHES/0600	NACHES/1800
E-14 ENG4 WILD FIRE SERVICES INC		08/17	MIKE FOSTER	3	NACHES/0600	NACHES/1800
E-15 ENG4 WILD FIRE SERVICES INC		08/17	STEVE KURVINK	3	NACHES/0600	NACHES/1800
<b>8. Division/Group Communication Summary</b>						
Function	Channel	RX Frequency N/W	RX Tone/NAC	TX Frequency N/W	TX Tone/NAC	Mode
COMMAND	1	170.6875	156.7	166.5750	156.7	A
COMMAND	2	171.7500	156.7	164.6750	156.7	A
TACTICAL	4	168.0500	107.2	168.0500	107.2	A
AIR TO GROUND	12	169.6500		169.6500		A
AIR TO GROUND	13	169.8125		169.8125		A
<b>9. Prepared By (Resource Unit Leader)</b>			<b>Approved By (Planning Section Chief)</b>		<b>Date</b>	<b>Time</b>
JILL JOHNSON			MIKE CHARTER		08/06/2022	1644



**Division/Group Assignment List (ICS 204 WF)**  
**Controlled Unclassified Information//Basic**

<b>1. Incident Name:</b>				<b>3.</b>		
COW CANYON				<b>Branch:</b>	<b>Division/Group</b>  <b>C (COW CANYON)</b>	
<b>2. Operational Period: DAY/NIGHT</b>						
Date/Time From: 08/07/2022 0600      SUN		Date/Time To: 08/08/2022 0600      MON				
<b>4. Operations Personnel</b>						
<b>OPERATIONS CHIEF</b>		AARON ROWE KURT RANTA (T);		<b>DIVISION/GROUP SUPERVISOR</b>		MATT KENNEDY CARSON ZEPP (T)
<b>AIR ATTACK SUPERVISOR</b>		TIM LYDA		<b>SAFETY OFFICER</b>		JACK CATES; TAIJA CORSO
<b>5. Resources Assigned this Period</b>						
Strike Team / Task Force / Resource Designator		LWD	Leader	Number Persons	Drop Off PT./Time	Pick Up PT./Time
E-3 WTS2 PINE MOUNTAIN EXCAVATING		08/17	BOB GOSS	1	NACHES/0600	NACHES/1800
E-43 WTS2 KELSI N BEAMAN		08/20	DUANE LARSON	1	NACHES/0600	NACHES/1800
E-2 DZR2 ANDREW DUKE		08/17	ANDY DUKE	4	NACHES/0600	NACHES/1800
E-10 DZR2 J & S LOGGING CO		08/17	TIM JEFFERSON	2	NACHES/0600	NACHES/1800
E-18 DZR2 TIMBERED RANGELAND MGMT		08/17	KEN GORDON	2	NACHES/0600	NACHES/1800
E-42 SKG2 DUKE, ANDREW		08/19	JUSTIN DURSTON	2	NACHES/0600	NACHES/1800
E-31 PCT2 PETERSON DIESEL REPAIR		08/20	KYLE PETERSON	2	NACHES/0600	NACHES/1800
O-31 REM BEYOND THE EDGE		08/20		4	NACHES/0600	NACHES/1800
<b>6. Control Operations/Work Assignments:</b>						
TASK: Mop up and cold trail fireline. PURPOSE: Contain fire edge. END STATE: No flames or smokes are found that are a threat to escape the fireline.						
<b>7. Special Instructions:</b>						
(V) - Identifies resources assigned to the Vantage Highway fire. Reassignment to Cow Canyon fire is in process.  Insurance Engine in Division - identifier SG07.						
<b>8. Division/Group Communication Summary</b>						
Function	Channel	RX Frequency N/W	RX Tone/NAC	TX Frequency N/W	TX Tone/NAC	Mode
COMMAND	1	170.6875	156.7	166.5750	156.7	A
COMMAND	2	171.7500	156.7	164.6750	156.7	A
TACTICAL	4	168.0500	107.2	168.0500	107.2	A
AIR TO GROUND	12	169.6500		169.6500		A
AIR TO GROUND	13	169.8125		169.8125		A
<b>9. Prepared By (Resource Unit Leader)</b>			<b>Approved By (Planning Section Chief)</b>		<b>Date</b>	<b>Time</b>
JILL JOHNSON			MIKE CHARTER		08/06/2022	1644

**Division/Group Assignment List (ICS 204 WF)**  
**Controlled Unclassified Information//Basic**

<b>1. Incident Name:</b>				<b>3.</b>		
COW CANYON				<b>Branch:</b>	<b>Division/Group</b>  <b>L (COW CANYON)</b>	
<b>2. Operational Period: DAY/NIGHT</b>						
Date/Time From: 08/07/2022 0600      SUN		Date/Time To: 08/08/2022 0600      MON				
<b>4. Operations Personnel</b>						
<b>OPERATIONS CHIEF</b>		AARON ROWE KURT RANTA (T);		<b>DIVISION/GROUP SUPERVISOR</b>		TED HARGRAVES IAN MCCORD (T)
<b>AIR ATTACK SUPERVISOR</b>		TIM LYDA		<b>SAFETY OFFICER</b>		JACK CATES; TAIJA CORSO
<b>5. Resources Assigned this Period</b>						
Strike Team / Task Force / Resource Designator		LWD	Leader	Number Persons	Drop Off PT./Time	Pick Up PT./Time
O-30.70 SOF2		08/18	DON WALLER	1	NACHES/0600	NACHES/1800
O-2.11 TFLD **		08/16	FIDEL VERDUZCO	1	NACHES/0600	NACHES/1800
O-5 HEQB		08/17	CODY PAGEL	1	NACHES/0600	NACHES/1800
O-10 HEQB (T)		08/17	MORGAN REISDORFER	1	NACHES/0600	NACHES/1800
C- CR2I AHTANUM **		08/18	JEFF DELAROSA	17	NACHES/0600	NACHES/1800
C- CR2I DNR CREW 411 **		08/14	BRYAN LYLE	15	NACHES/0600	NACHES/1800
C- CRW2 DNR CASCADE 441 **		08/14	CHUCK WATKINS	10	NACHES/0600	NACHES/1800
C-5 CRW2 PATRICK ENVIRONMENTAL PR17		08/18	CHAMBERS	21	NACHES/0600	NACHES/1800
C-8 (V) CRW2 WEST COAST FORM AM5		08/16	ABEL ANGURO	20	NACHES/0600	NACHES/1800
C-13 (V) CRW2 COLUMBIA RV 52		08/16	BRENT MIZELL	20	NACHES/0600	NACHES/1800
E-49 ENG4 BAILEY ENTERPRISES		08/20	CLIVE BAILEY	3	NACHES/0600	NACHES/1800
E-44 WTS2 KELSIE N BEAMAN		08/20	ROBERT GIBSON	1	NACHES/0600	NACHES/1800
E-1 DZR3 TOP RAIL LLC				2	NACHES/0600	NACHES/1800
E-7 DZR3 TAN INDUSTRIES LLC		08/17	COSMO TAN	2	NACHES/0600	NACHES/1800
E-40 SKG2 KELSIE N BEAMAN		08/20	BRANDON JONES	2	NACHES/0600	NACHES/1800
<b>8. Division/Group Communication Summary</b>						
Function	Channel	RX Frequency N/W	RX Tone/NAC	TX Frequency N/W	TX Tone/NAC	Mode
COMMAND	1	170.6875	156.7	166.5750	156.7	A
COMMAND	2	171.7500	156.7	164.6750	156.7	A
TACTICAL	5	168.6000	107.2	168.6000	107.2	A
AIR TO GROUND	12	169.6500		169.6500		A
AIR TO GROUND	13	169.8125		169.8125		A
<b>9. Prepared By (Resource Unit Leader)</b>			<b>Approved By (Planning Section Chief)</b>		<b>Date</b>	<b>Time</b>
JILL JOHNSON			MIKE CHARTER		08/06/2022	1644

**Division/Group Assignment List (ICS 204 WF)**  
**Controlled Unclassified Information//Basic**

<b>1. Incident Name:</b>			<b>3.</b>			
COW CANYON			<b>Branch:</b>		<b>Division/Group</b>	
<b>2. Operational Period: DAY/NIGHT</b>			L (COW CANYON)			
Date/Time From: 08/07/2022 0600      SUN		Date/Time To: 08/08/2022 0600      MON				
<b>4. Operations Personnel</b>						
<b>OPERATIONS CHIEF</b>		AARON ROWE KURT RANTA (T);		<b>DIVISION/GROUP SUPERVISOR</b>		TED HARGRAVES IAN MCCORD (T)
<b>AIR ATTACK SUPERVISOR</b>		TIM LYDA		<b>SAFETY OFFICER</b>		JACK CATES; TAIJA CORSO
<b>5. Resources Assigned this Period</b>						
Strike Team / Task Force / Resource Designator		LWD	Leader	Number Persons	Drop Off PT./Time	Pick Up PT./Time
E-41 SKG2 DUKE, ANDREW		08/19	CONRAD SCHELER	2	NACHES/0600	NACHES/1800
E-30 AMB2 PROTECTION -1		08/19	BRAD STINE	2	NACHES/0600	NACHES/1800
<b>6. Control Operations/Work Assignments:</b>						
<p>TASK: Mop up and cold trail fireline.  PURPOSE: Contain fire edge.  END STATE: No flames or smokes are found that are a threat to escape the fireline.</p> <p>TASK: Identified resources Maintain immediate readiness.  PURPOSE: Respond to IA within designated area(TFR).  END STATE: Provide initial attack and support for new fire starts.</p>						
<b>7. Special Instructions:</b>						
(V) - Identifies resources assigned to the Vantage Highway fire. Reassignment to Cow Canyon fire is in process.						
<u>Insurance Resources in Division include:</u>						
<ul style="list-style-type: none"> <li>• ENG5 Glacier Peak 04</li> <li>• ENG5 Engine 627</li> <li>• ENG5 SGS</li> <li>• WT Elk Ridge</li> </ul>						
** Resource will be used for IA as needed.						
<b>8. Division/Group Communication Summary</b>						
Function	Channel	RX Frequency N/W	RX Tone/NAC	TX Frequency N/W	TX Tone/NAC	Mode
COMMAND	1	170.6875	156.7	166.5750	156.7	A
COMMAND	2	171.7500	156.7	164.6750	156.7	A
TACTICAL	5	168.6000	107.2	168.6000	107.2	A
AIR TO GROUND	12	169.6500		169.6500		A
AIR TO GROUND	13	169.8125		169.8125		A
<b>9. Prepared By (Resource Unit Leader)</b>			<b>Approved By (Planning Section Chief)</b>		<b>Date</b>	<b>Time</b>
JILL JOHNSON			MIKE CHARTER		08/06/2022	1644

**Division/Group Assignment List (ICS 204 WF)**  
**Controlled Unclassified Information//Basic**

<b>1. Incident Name:</b>				<b>3.</b>		
COW CANYON				<b>Branch:</b>	<b>Division/Group</b>  W (COW CANYON)	
<b>2. Operational Period: DAY/NIGHT</b>						
Date/Time From: 08/07/2022 0600      SUN		Date/Time To: 08/08/2022 0600      MON				
<b>4. Operations Personnel</b>						
<b>OPERATIONS CHIEF</b>		AARON ROWE KURT RANTA (T);		<b>DIVISION/GROUP SUPERVISOR</b>		BRIAN CAMPBELL
<b>AIR ATTACK SUPERVISOR</b>		TIM LYDA		<b>SAFETY OFFICER</b>		JACK CATES; TAIJA CORSO
<b>5. Resources Assigned this Period</b>						
Strike Team / Task Force / Resource Designator	LWD	Leader	Number Persons	Drop Off PT./Time	Pick Up PT./Time	
O-30.72 SOF2	08/19	PAUL BRNA	1	NACHES/0600	NACHES/1800	
O-65 (V) TFLD	08/20	KENT STANFORD	1	NACHES/0600	NACHES/1800	
C-2 CR2I MT BAKER	08/19	ERIC USHER	20	NACHES/0600	NACHES/1800	
C-3 CRW2 MR CONTRACTING	08/17	MANUEL JIMENEZ	20	NACHES/0600	NACHES/1800	
C-7 CRW2 YAKAMA TYPE 2	08/17	TRAVIS INESS	20	NACHES/0600	NACHES/1800	
E-5 WTS2 KING HYDROSEEDING	08/18	WARDEN, DON	1	NACHES/0600	NACHES/1800	
E-8 DZR3 ANDREW DUKE	08/17	CHRIS BOLES	2	NACHES/0600	NACHES/1800	
E-9 DZR3 JUSTIN PITTS TRUCKING	08/17	RON LEVANG	2	NACHES/0600	NACHES/1800	
E-29 AMB1 CLARK COUNTY FR	08/20	DANIEL FERBER	2	NACHES/0600	NACHES/1800	
O-44 EMPF	08/11	ADAM WUNSCH	1	NACHES/0600	NACHES/1800	
<b>6. Control Operations/Work Assignments:</b>						
TASK: Mop up and cold trail fireline. PURPOSE: Contain fire edge. END STATE: No flames or smokes are found that are a threat to escape the fireline.						
<b>7. Special Instructions:</b>						
(V) - Identifies resources assigned to the Vantage Highway fire. Reassignment to Cow Canyon fire is in process.						
<b>8. Division/Group Communication Summary</b>						
Function	Channel	RX Frequency N/W	RX Tone/NAC	TX Frequency N/W	TX Tone/NAC	Mode
COMMAND	1	170.6875	156.7	166.5750	156.7	A
COMMAND	2	171.7500	156.7	164.6750	156.7	A
TACTICAL	6	166.7250	107.2	166.7250	107.2	A
AIR TO GROUND	12	169.6500		169.6500		A
AIR TO GROUND	13	169.8125		169.8125		A
<b>9. Prepared By (Resource Unit Leader)</b>			<b>Approved By (Planning Section Chief)</b>		<b>Date</b>	<b>Time</b>
JILL JOHNSON			MIKE CHARTER		08/06/2022	1644



**Division/Group Assignment List (ICS 204 WF)**  
**Controlled Unclassified Information//Basic**

<b>1. Incident Name:</b>			<b>3.</b>			
COW CANYON			<b>Branch:</b>		<b>Division/Group</b>	
<b>2. Operational Period: DAY/NIGHT</b>			<b>STRUCTURE / IA (COW CANYON)</b>			
Date/Time From: 08/07/2022 0600      SUN		Date/Time To: 08/08/2022 0600      MON				
<b>4. Operations Personnel</b>						
<b>OPERATIONS CHIEF</b>		AARON ROWE KURT RANTA (T);		<b>DIVISION/GROUP SUPERVISOR</b>		RICK WOODALL
<b>AIR ATTACK SUPERVISOR</b>		TIM LYDA		<b>SAFETY OFFICER</b>		JACK CATES; TAIJA CORSO
<b>5. Resources Assigned this Period</b>						
Strike Team / Task Force / Resource Designator		LWD	Leader	Number Persons	Drop Off PT./Time	Pick Up PT./Time
O-66 (V) TFLD		08/15	RICH WALLMOW	1	NACHES/0600	NACHES/1800
C-9 (V) CRW2 WEST COAST REFOR		08/16	HOMER	20	NACHES/0600	NACHES/1800
E-3 (V) ENG5 DNR E5102		08/14	IRIS BANKS	4	NACHES/0600	NACHES/1800
E-4 (V) ENG5 DNR E5105		08/14	LUKE ACORN	4	NACHES/0600	NACHES/1800
E-5 (V) ENG5 DNR E5201		08/14	ISAAC DUGGER	4	NACHES/0600	NACHES/1800
E-6 (V) ENG5 DNR E8262		08/14	MARTIN FERRELL	3	NACHES/0600	NACHES/1800
E-7 (V) ENG5 DNR E2406		08/14	MATHEW SABIN	3	NACHES/0600	NACHES/1800
E-17 DZR4 BADGER DIRTWORKS		08/17	KYLE MALTIN	2	NACHES/0600	NACHES/1800
<b>6. Control Operations/Work Assignments:</b>						
TASK: Locate, assess, and prep structures Near the Division. PURPOSE: Identify mitigation needs to protect structures. END STATE: Structures are defensible.						
TASK: Initial attack new starts under TFR. PURPOSE: Prevent/ suppress new unwanted starts. END STATE: All new starts are extinguished.						
<b>7. Special Instructions:</b>						
(V) - Identifies resources assigned to the Vantage Highway fire. Reassignment to Cow Canyon fire is in process.						
<b>8. Division/Group Communication Summary</b>						
Function	Channel	RX Frequency N/W	RX Tone/NAC	TX Frequency N/W	TX Tone/NAC	Mode
COMMAND	1	170.6875	156.7	166.5750	156.7	A
COMMAND	2	171.7500	156.7	164.6750	156.7	A
TACTICAL	7	166.7750	107.2	166.7750	107.2	A
AIR TO GROUND	12	169.6500		169.6500		A
AIR TO GROUND	13	169.8125		169.8125		A
<b>9. Prepared By (Resource Unit Leader)</b>			<b>Approved By (Planning Section Chief)</b>		<b>Date</b>	<b>Time</b>
JILL JOHNSON			MIKE CHARTER		08/06/2022	1644

**Division/Group Assignment List (ICS 204 WF)**  
**Controlled Unclassified Information//Basic**

<b>1. Incident Name:</b>			<b>3.</b>			
COW CANYON			<b>Branch:</b>		<b>Division/Group</b>	
<b>2. Operational Period: DAY/NIGHT</b>			<b>NIGHT (COW CANYON)</b>			
Date/Time From: 08/07/2022 0600      SUN		Date/Time To: 08/08/2022 0600      MON				
<b>4. Operations Personnel</b>						
<b>OPERATIONS CHIEF</b>		AARON ROWE KURT RANTA (T);		<b>DIVISION/GROUP SUPERVISOR</b>		LARRY LEACH
<b>AIR ATTACK SUPERVISOR</b>		TIM LYDA		<b>SAFETY OFFICER</b>		JACK CATES; TAIJA CORSO
<b>5. Resources Assigned this Period</b>						
Strike Team / Task Force / Resource Designator		LWD	Leader	Number Persons	Drop Off PT./Time	Pick Up PT./Time
O-7 TFLD		08/17	GENE PHILLIPS	1	NACHES/1800	NACHES/0600
O-18 TFLD (T)		08/17	MATTHEW FISHER	1	NACHES/1800	NACHES/0600
O-4 HEQB		08/17	KODY BEESLEY	1	NACHES/1800	NACHES/0600
O-11 HEQB (T)		08/17	DYLAN VAN PELT	1	NACHES/1800	NACHES/0600
C-4 CRW2 PATRICK ENVIRONMENTAL PR16		08/17	NEIL RAFIKER	20	NACHES/1800	NACHES/0600
NW STRIKE TEAM						
O-24 STEN		08/16	JOTHAN MCGAUGHEY	1	NACHES/1800	NACHES/0600
O-23 STEN (T)		08/16	TRENTON CROSSLAND	1	NACHES/1800	NACHES/0600
E-21 ENG5 DNR NWS E5204		08/16	CAMRON ANDERSON	4	NACHES/1800	NACHES/0600
E-22 ENG5 DNR PCS E2301		08/16	TREY HARTLEY	3	NACHES/1800	NACHES/0600
E-23 ENG5 DNR PCS E2205		08/16	THOMAS TANGEN	4	NACHES/1800	NACHES/0600
E-24 ENG5 DNR PCS E1201		08/16	FELIPE BARRAGAN	5	NACHES/1800	NACHES/0600
E-25 ENG5 DNR OLS E1301		08/16	JEFF HAPPE	5	NACHES/1800	NACHES/0600
E-5 WTS2 KING HYDROSEEDING		08/18	JOE IVIE	1	NACHES/1800	NACHES/0600
E-6 WTS2 KING HYDROSEEDING		08/17	JOHN GRABOWSKI	1	NACHES/1800	NACHES/0600
E-16 AMB2 BALLARD		08/17	DAN CRAIG	2	NACHES/1800	NACHES/0600
<b>8. Division/Group Communication Summary</b>						
Function	Channel	RX Frequency N/W	RX Tone/NAC	TX Frequency N/W	TX Tone/NAC	Mode
COMMAND	1	170.6875	156.7	166.5750	156.7	A
COMMAND	2	171.7500	156.7	164.6750	156.7	A
TACTICAL	4	168.0500	107.2	168.0500	107.2	A
AIR TO GROUND	12	169.6500		169.6500		A
AIR TO GROUND	13	169.8125		169.8125		A
<b>9. Prepared By (Resource Unit Leader)</b>			<b>Approved By (Planning Section Chief)</b>		<b>Date</b>	<b>Time</b>
JILL JOHNSON			MIKE CHARTER		08/06/2022	1644

**Division/Group Assignment List (ICS 204 WF)**  
**Controlled Unclassified Information//Basic**

<b>1. Incident Name:</b>			<b>3.</b>			
COW CANYON			<b>Branch:</b>		<b>Division/Group</b>	
<b>2. Operational Period: DAY/NIGHT</b>					<b>NIGHT (COW CANYON)</b>	
Date/Time From: 08/07/2022 0600      SUN		Date/Time To: 08/08/2022 0600      MON				
<b>4. Operations Personnel</b>						
<b>OPERATIONS CHIEF</b>		AARON ROWE KURT RANTA (T);		<b>DIVISION/GROUP SUPERVISOR</b>		LARRY LEACH
<b>AIR ATTACK SUPERVISOR</b>		TIM LYDA		<b>SAFETY OFFICER</b>		JACK CATES; TAIJA CORSO
<b>5. Resources Assigned this Period</b>						
Strike Team / Task Force / Resource Designator		LWD	Leader	Number Persons	Drop Off PT./Time	Pick Up PT./Time
<b>6. Control Operations/Work Assignments:</b>						
<p>TASK: Locate, assess, and suppress spot fires.  PURPOSE: Prevent fire spread.  END STATE: All spots outside the established fireline are extinguished.</p> <p>TASK: Patrol and mop up areas that threaten values at risk.  PURPOSE: Protect values at risk.  END STATE: Fire does not pose a threat to any critical values within or adjacent to the division.</p>						
<b>7. Special Instructions:</b>						
<b>8. Division/Group Communication Summary</b>						
Function	Channel	RX Frequency N/W	RX Tone/NAC	TX Frequency N/W	TX Tone/NAC	Mode
COMMAND	1	170.6875	156.7	166.5750	156.7	A
COMMAND	2	171.7500	156.7	164.6750	156.7	A
TACTICAL	4	168.0500	107.2	168.0500	107.2	A
AIR TO GROUND	12	169.6500		169.6500		A
AIR TO GROUND	13	169.8125		169.8125		A
<b>9. Prepared By (Resource Unit Leader)</b>			<b>Approved By (Planning Section Chief)</b>		<b>Date</b>	<b>Time</b>
JILL JOHNSON			MIKE CHARTER		08/06/2022	1644

**AIR OPERATIONS SUMMARY**

PREPARED BY: Paul Balfour

PREPARED DATE/TIME: August 6, 2022 1800hrs

<b>INCIDENT NAME</b> VANTAGE HIGHWAY	<b>2. OPERATIONAL PERIOD:</b> Date: 8/7/2022      Helibase Start Time: 0830 End Time: 2030      Sunrise: 0549 Sunset: 2025 (Times valid for Ellensberg)
---	---

<b>3. REMARKS (Safety Notes, Hazards, Air Operations Special Equipment, etc.):</b> General Aviation, See & Avoid  Bucket work, Retardant drops: ensure area is clear of ground personnel before dropping; watch for wires; be aware of potential for turbulence at ridge tops, saddles, canyons, etc *** BE AWARE OF FATIGUE, TAKE LONGER BREAKS WHEN FLYING IN SMOKEY CONDITIONS. *** Report all TFR intrusions to Air Operations, Air Support or Helibase as soon as possible.	<b>4. MEDEVAC A/C:</b> Contact CWICC 509-884-3473	<b>5. TFR #2/5152</b> 118.6500 (A74)
---	---	---

6. PERSONNEL LWD	Phone	7. FREQUENCIES	AM	FM	8. FIXED-WING	# Avail / Type/ Make-Model / FAA N# / Base(s)
AOBD: Paul Balfour O-30.43	509-993-8739	AIR/AIR Primary (A-10)	118.6500		Fixed Wing/Buckets	DIVS order thru ATGS if up, or Communications
ASGS: Tim Lyda O- 30.44	541-761-2676	AIR/AIR Secondary (A-11)	127.1500			
HEBM:		AIR/GROUND Primary (A-12)		169.2000	ATGS Aircraft	Will use available ATGS throughout the operational period until TEAM ATGS is filled  LATs Order through Air Attack/AOBD Or CWICC
HEMG:		AIR/GROUND (A-13)		167.9500		
ATGS:		DNR-AIR/GROUND IA		159.270 T-103.5		
ATGS:		AIR/Ground			NOTES:	
CWICC:	509-884-3473	UNICOM				
		DECK				
						email costs to timlyda22@gmail.com

**9. HELICOPTERS**

FAA N#	TY	MAKE/MODEL	BASE	START	AVAIL	REMARKS	FAA N#	TY	MAKE/MODEL	BASE	START	AVAIL	REMARKS



**AIR OPERATIONS SUMMARY**

PREPARED BY: Paul Balfour

PREPARED DATE/TIME: August 6, 2022 1800hrs

<b>INCIDENT NAME</b> COW CANYON	<b>2. OPERATIONAL PERIOD:</b> Date: 8/7/2022      Helibase Start Time: 0830 End Time: 2030      Sunrise: 0549 Sunset: 2025 (Times valid for Ellensberg)
------------------------------------	---

<b>3. REMARKS (Safety Notes, Hazards, Air Operations Special Equipment, etc.):</b> General Aviation, See & Avoid  Bucket work, Retardant drops: ensure area is clear of ground personnel before dropping; watch for wires; be aware of potential for turbulence at ridge tops, saddles, canyons, etc *** BE AWARE OF FATIGUE, TAKE LONGER BREAKS WHEN FLYING IN SMOKEY CONDITIONS. *** Report all TFR intrusions to Air Operations, Air Support or Helibase as soon as possible.	<b>4. MEDEVAC A/C:</b> Contact CWICC 509-884-3473	<b>5. TFR #2/5754</b> 118.7250 (A50)
---	---	---

6. PERSONNEL LWD	Phone	7. FREQUENCIES	AM	FM	8. FIXED-WING	# Avail / Type/ Make-Model / FAA N# / Base(s)
AOBD: Paul Balfour O-30.43	509-993-8739	AIR/AIR Primary (A-9)	118.7250		Fixed Wing/Buckets	DIVS order thru ATGS if up, or Communications
ASGS: Tim Lyda O- 30.44	541-761-2676	AIR/AIR Secondary (A-10)	125.1250			
HEBM:		AIR/GROUND Primary (A-11)		169.6500	ATGS Aircraft	Will use available ATGS throughout the operational period until TEAM ATGS is filled  LATs Order through Air Attack/AOBD Or CWICC
HEMG: Joe Thorpe	509-899-1847	AIR/GROUND (A-12)		169.8125		
ATGS:		DNR-AIR/GROUND IA		159.270 T-103.5		
ATGS:		AIR/Ground			NOTES:	
CWICC:	509-884-3473	UNICOM				
		DECK				
						email costs to timlyda22@gmail.com

**9. HELICOPTERS**

FAA N#	TY	MAKE/MODEL	BASE	START	AVAIL	REMARKS	FAA N#	TY	MAKE/MODEL	BASE	START	AVAIL	REMARKS
H-117DR	2	Bell 205	YAK	0830	0900	Type 2 w/Bucket							

# INCIDENT RADIO COMMUNICATIONS PLAN (ICS 205)

Controlled Unclassified Information//Basic

<b>1. Incident Name:</b>	<b>2. Date/Time Prepared:</b>	<b>3. Operational Period: DAY / NIGHT</b>	
VANTAGE HIGHWAY / COW CANYON	Date: 08/06/2022 Time: 2000	Date/Time From: 08/07/2022 0600      SUN	Date/Time To: 08/08/2022 0600      MON

**4. Basic Radio Channel Use:**

Zone Group	Ch #	Function	Channel Name/Trunked Radio System Talkgroup	Assignment	RX Freq	RX Tone/NAC	TX Freq	TX Tone/NAC	Mode (A,D, or M)	Remarks
	1	COMMAND	CMD 1	COW CANYON	170.6875	156.7	166.5750	156.7	A	
	2	COMMAND	CMD 2	COW CANYON	171.7500	156.7	164.6750	156.7	A	
	3	COMMAND	CMD 3	VANTAGE HWY	168.4750	156.7	165.4000	156.7	A	
	4	TACTICAL	TAC 4	DIV C / NIGHT	168.0500	107.2	168.0500	107.2	A	
	5	TACTICAL	TAC 5	DIV L / M	168.6000	107.2	168.6000	107.2	A	
	6	TACTICAL	TAC 6	DIV W	166.7250	107.2	166.7250	107.2	A	
	7	TACTICAL	TAC 7	DIV A/Z; STRUCTURE	166.7750	107.2	166.7750	107.2	A	
	8	TACTICAL	TAC 8	DIV E	168.2500	107.2	168.2500	107.2	A	
	9	COMMAND	DNR CLEM	IA ONLY	159.3450	114.8	151.4675	114.8	A	
	10	TACTICAL	DNR COM	IA ONLY	151.4150	103.5	151.4150	103.5	A	
	11	AIR TO GROUND	DNR A/G 1	IA ONLY	159.2700	103.5	159.2700	103.5	A	
	12	AIR TO GROUND	A/G PRI 1	COW CANYON	169.6500		169.6500		A	
	13	AIR TO GROUND	A/G SEC 1	COW CANYON	169.8125		169.8125		A	
	14	AIR TO GROUND	A/G PRI 2	VANTAGE HWY	169.2000		169.2000		A	
	15	AIR TO GROUND	A/G SEC 2	VANTAGE HWY	167.9500		167.9500		A	
	16	AIR GUARD	AIRGUARD	ALL DIVISIONS	168.6250		168.6250	110.9	A	

**5. Special Instructions:**

<b>6. Prepared By</b> (Communications Unit Leader)	Name: MISSY PARKER	Signature: <i>Missy Parker</i>
ICS 205	IAP Page	Date/Time: 08/06/2022 2000

# **DMOB LIST FOR SUNDAY 8-7-22**

## **VANTAGE HIGHWAY US-WA-SES-000263**

### **CREWS**

<b>C-8</b>	<b>0630</b>	<b>(CRW2)</b>	<b>WEST COAST REFORESTATION</b>
<b>C-9</b>	<b>0645</b>	<b>(CRW2)</b>	<b>WEST COAST REFORESTATION</b>
<b>C-13</b>	<b>0700</b>	<b>(CR2I)</b>	<b>CR2I COLUMBIA RIVER</b>
<b>C-15</b>	<b>0715</b>	<b>(CR2I)</b>	<b>PATRICK ENVIRONMENTAL</b>
<b>C-5</b>	<b>0730</b>	<b>(CRW2)</b>	<b>IRON MOUNTAIN FIREFIGHTING</b>
<b>C-10</b>	<b>0745</b>	<b>(CRW2)</b>	<b>SZ FORESTRY</b>

### **EQUIPMENT**

<b>E-3</b>	<b>0630</b>	<b>(ENG5)</b>	<b>ENG5 DNR E5102</b>
<b>E-4</b>	<b>0645</b>	<b>(ENG5)</b>	<b>ENG5 DNR E5105</b>
<b>E-5</b>	<b>0700</b>	<b>(ENG5)</b>	<b>ENG5 DNR E5201</b>
<b>E-6</b>	<b>0715</b>	<b>(ENG5)</b>	<b>ENG5 DNR E8262</b>
<b>E-7</b>	<b>0730</b>	<b>(ENG5)</b>	<b>ENG5 DNR E2406</b>
<b>E-1</b>	<b>0800</b>	<b>(DZR3)</b>	<b>ELBO BACKHOE &amp; HAULING D3</b>
<b>E-15</b>	<b>0815</b>	<b>(DZR3)</b>	<b>DUKES EQUIPMENT D3</b>
<b>E-17</b>	<b>0900</b>	<b>(DZR3)</b>	<b>DOUGLAS LOGGING D3</b>

### **OVERHEAD**

<b>O-2</b>	<b>0630</b>	<b>(TFLD)</b>	<b>CALDWELL, MATHEW VERNE</b>
<b>O-3</b>	<b>0645</b>	<b>(TFLD)</b>	<b>WILLIAMS, BRIAN JAMES</b>
<b>O-59</b>	<b>0700</b>	<b>(HEQB)</b>	<b>HARTELOO, CHRIS EDWIN</b>
<b>O-66</b>	<b>0715</b>	<b>(TFLD)</b>	<b>WALLMOW, RICHARD WAYNE</b>

## **COW CANYON US-WA-SES-000277**

### **EQUIPMENT**

<b>E-19</b>	<b>0930</b>	<b>(DZR2)</b>	<b>DZR2 - DOZER, TYPE 2- SCOUT LAKE</b>
-------------	-------------	---------------	---

**DEMOB is located at 901 E. Seventh Avenue in Ellensburg. Finance, Communications and DEMOB will be there. Ground Support and Supply are located one street over at Eighth and N. Alder. Contact DEMOB at 208-570-9358 for any questions. Please have your CTR's completed before your arrival.**

# TRAINING MESSAGE

Educating trainees on their responsibilities.

## Topic: Training Objectives

- ❖ Training objectives are your goals or desired experience(s) needed to provide you the knowledge, skills and techniques to do the job you are training and working toward.
- ❖ As a new trainee, your training objectives are pretty broad, considering you are just becoming familiar with the duties and responsibilities of the position.
- ❖ As you gain experience, your objectives will become more focused and targeted to assist you in mastering the skills and knowledge needed to complete your training.

“When you train, focus on your weaknesses.”

If you have any questions or comments, please  
text/call: 541-727-1022. Email: [henry\\_falcon@firenet.gov](mailto:henry_falcon@firenet.gov)

\*\*\*\*\*

Arriving Trainees please register with the Training Specialist using the QR code below. If you are unable to use the QR Code, you can also register by calling or texting to the number listed above.

I will be working on this assignment remotely.



OR <https://forms.office.com/g/X3S0XWuq4W>

\*\*\*\*\*

Hank Falcon / NW team 12

Cell: 541-727-1022 / [henry\\_falcon@firenet.gov](mailto:henry_falcon@firenet.gov)



## Human Resource Message



**Vantage Highway and Cow Canyon Fires**  
August 7, 2022

### **-MUTUAL RESPECT-**

**You make the difference!**

**Treat everyone with dignity and respect  
while on the incident and when doing  
business in the community.**

Mutual respect involves accepting differences in a respectful manner and promoting communication and learning among team members based on the diversity of opinions and cultural backgrounds. Let us all do our part in treating each other with dignity and respect throughout this fire assignment.

Thought for the day:



**Give respect Get respect**

**Be safe and have a good day!**

Susie Manezes, NW-Team 12- Human Resource Specialist (HRSP)  
Contact Number: 208-739-0255. [smanezes@blm.gov](mailto:smanezes@blm.gov)



**TO: ALL PERSONNEL**

**FROM: DEPARTMENT OF NATURAL RESOURCES  
DEPARTMENT OF CORRECTIONS**

**WILDFIRE**

**SUBJECT: WORKING AROUND OFFENDERS/DNR  
KITCHENS**

- **NO PERSON SHALL BE ALLOWED TO CARRY FIREARMS IN THE AREA WHERE OFFENDERS ARE WORKING.** ( It is acceptable to secure weapons in vehicles while entering into the working vicinity of offenders)
- **DO NOT GIVE OR TAKE ANYTHING FROM AN OFFENDER.** (Offenders are identified by red ball caps or red hard hats.)
- **DO NOT TAKE PHOTOS OR INTERVIEW OFFENDERS WITHOUT APPROVAL FROM DNR INMATE LIAISON.** (Signed consent forms required.)
- **DO NOT DO ANY FAVORS FOR OFFENDERS.** (Examples passing on a message, giving tobacco, asking for change, mailing a letter, using a phone, etc.)
- **PROMPTLY REPORT ANY SUSPICIOUS ACT TO THE SUPERVISOR, DOC STAFF OR INMATE LIAISON.** (The most innocent act/favor can have consequences that could negatively affect an offender for years.)
- **USE OF TABACCO PRODUCTS IN KITCHEN AREA IS NOT ALLOWED.** (Offenders are not allowed to use any tobacco products.)
- **HARRASSMENT OF ANY KIND WILL NOT BE TOLDERATED.** (All harassment allegations involving offenders will be reported to Human Resources and the involved agencies representatives.)
- **OFFENDERS ON DNR CREWS ARE RATED AS MINIMUM CUSTODY.**
- **TREAT OFFENDERS WITH RESPECT, BUT PRACTICE THE CORRECTIONAL DISTANCE. DON'T GET PERSONAL.** (Offenders generally feel good with being part of the fire suppression effort, treat them with the same respect and dignity as other fire fighters but DON'T GET PERSONAL.
- **OFFENDERS ARE TRAINED IN WORK ETHICS AND JOB SKILLS.** (Offenders are trained and experienced in their job assignments and work ethic. They are held accountable for job performance and behavior.)

**ACKNOWLEDGE CREWS FOR A JOB WELL DONE, OFFENDERS DO GOOD WORK AND APPRECIATE THE RECOGNITION.** Offenders need good professional role models as part of their rehabilitation process, consider their presence and set good examples by the context of your conversations and choice of language used.

# Logistics Message

## Ground Support 0500-2200

Western Village at Rodeo Grounds (Ellensburg)

## Supply 0500-2200

Western Village at Rodeo Grounds (Ellensburg)

## Medical 0600-2200

Western Village at Rodeo Grounds (Ellensburg)

## Communications 24/7

Adjacent to Armory at Kittitas Co Fairgrounds - in DNR Command Trailer

## Showers 0400-1000 and 1600-2130

Near Gazebo Kittitas Co Fairgrounds (Ellensburg)

## Kitchen

Breakfast 0500-0900

Dinner 1800-2100

Kittitas Secondary School



# **Cow Canyon Fire**

## **MEALS**

Breakfast: 0530 - 930

Lunch: Handed out at breakfast

Dinner: 1730 – 2130

## **SHOWERS**

Shower Trailer (behind school)

0500 - 1200 and 1400 - 2200





**Supply Cache**  
**Ground Support Parking**  
**Road Closed**  
**Water**  
**Handwash Station**  
**Medical Support**  
**Ground Support**  
**Check-In Finance PIO**  
**Comm's Trailer**  
**Plans / Ops / Safety**  
**Gazebo All Meals**  
**Shower Trailer**



**Incident Command Post Map  
Kittitas Event Center**





## Finance Message

[2022.vantagehighway.finance@firenet.gov](mailto:2022.vantagehighway.finance@firenet.gov)

(509) 423-6011 FSC Christina

[2022.cowcanyon.finance@firenet.gov](mailto:2022.cowcanyon.finance@firenet.gov)

(509) 778-8080 FSC Slita Bradley

*Finance for the Vantage Highway fire is located at the entrance of the Kittitas County Fairgrounds on left. Finance for Cow Canyon is located the Naches Middle School.*

*Please make sure to turn in CTR/Shift tickets daily, so we can control the cost of the fire and help you get paid.*

*Please make sure to put the correct Resource Order # and fire # on your CTR/Shift ticket. Please help us by stating if you are Vantage resource or Cow Canyon.*

***\*\*Equipment Resources with transport retained must have transport operators name in the remarks of the shift ticket.***

*If you have questions, please contact finance.*

*Equipment – 208-890-4869 Todd*

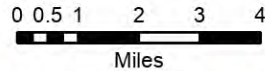
*TIME Unit – 509-823-6642 Steve*



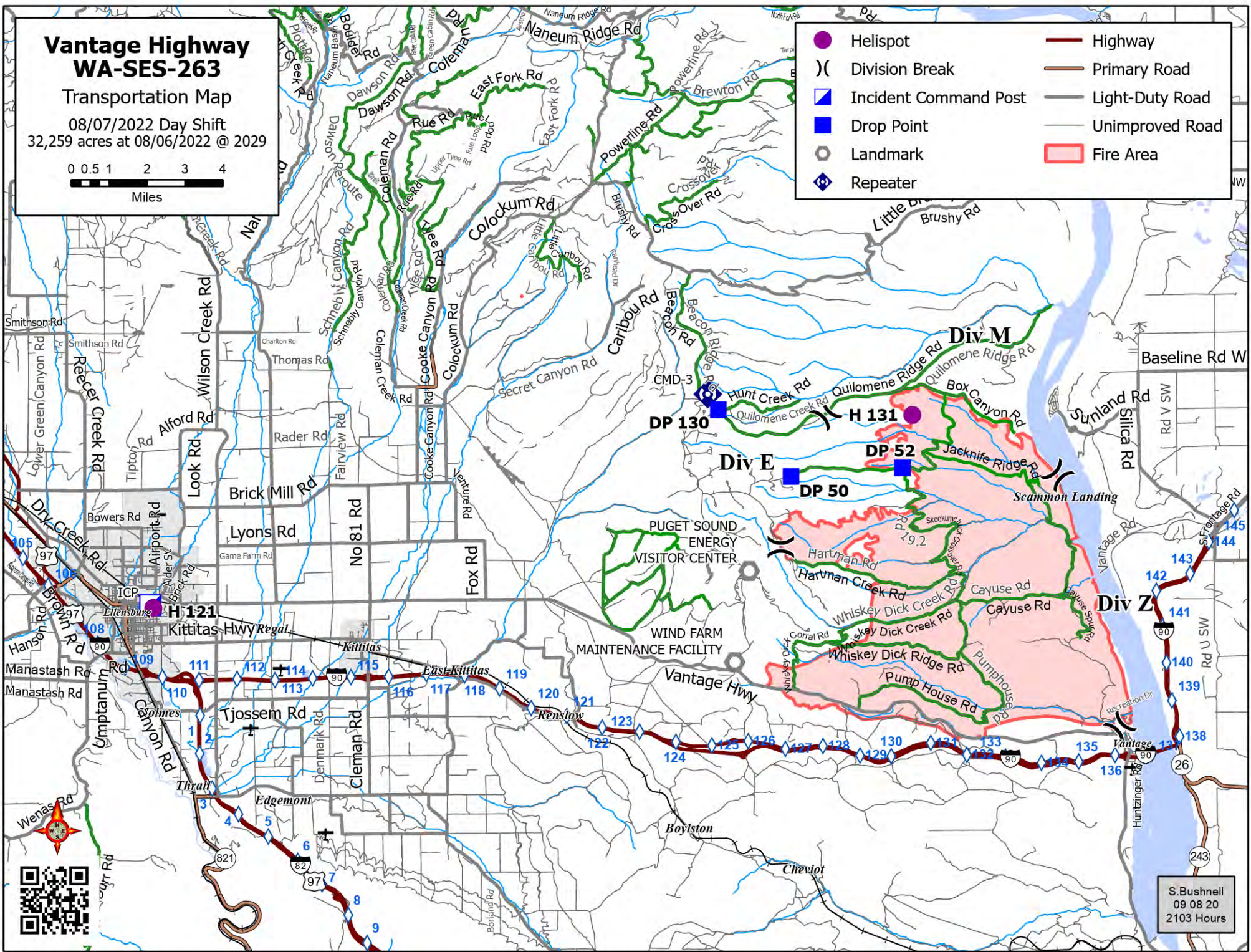
# Vantage Highway WA-SES-263

Transportation Map

08/07/2022 Day Shift  
32,259 acres at 08/06/2022 @ 2029



● Helispot	— Highway
) ( Division Break	— Primary Road
▣ Incident Command Post	— Light-Duty Road
■ Drop Point	— Unimproved Road
○ Landmark	■ Fire Area
◆ Repeater	



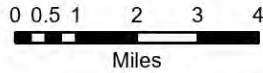
S. Bushnell  
09 08 20  
2103 Hours



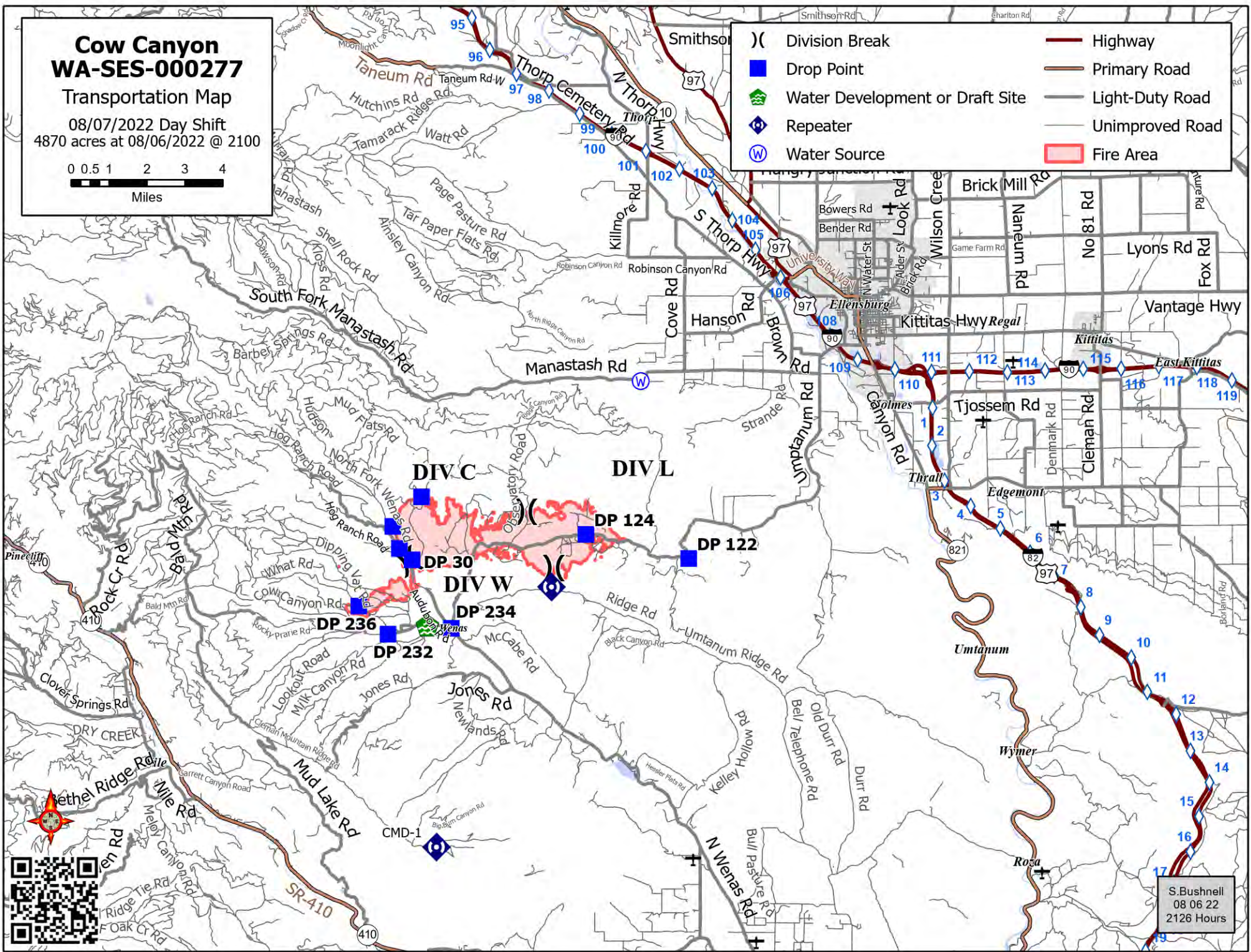
# Cow Canyon WA-SES-000277

## Transportation Map

08/07/2022 Day Shift  
4870 acres at 08/06/2022 @ 2100



( )	Division Break	—	Highway
■	Drop Point	—	Primary Road
🌿	Water Development or Draft Site	—	Light-Duty Road
📶	Repeater	—	Unimproved Road
Ⓜ	Water Source	■	Fire Area



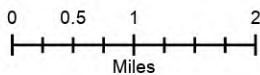
S. Bushnell  
08 06 22  
2126 Hours



# Vantage Highway WA-SES-263 IAP Map

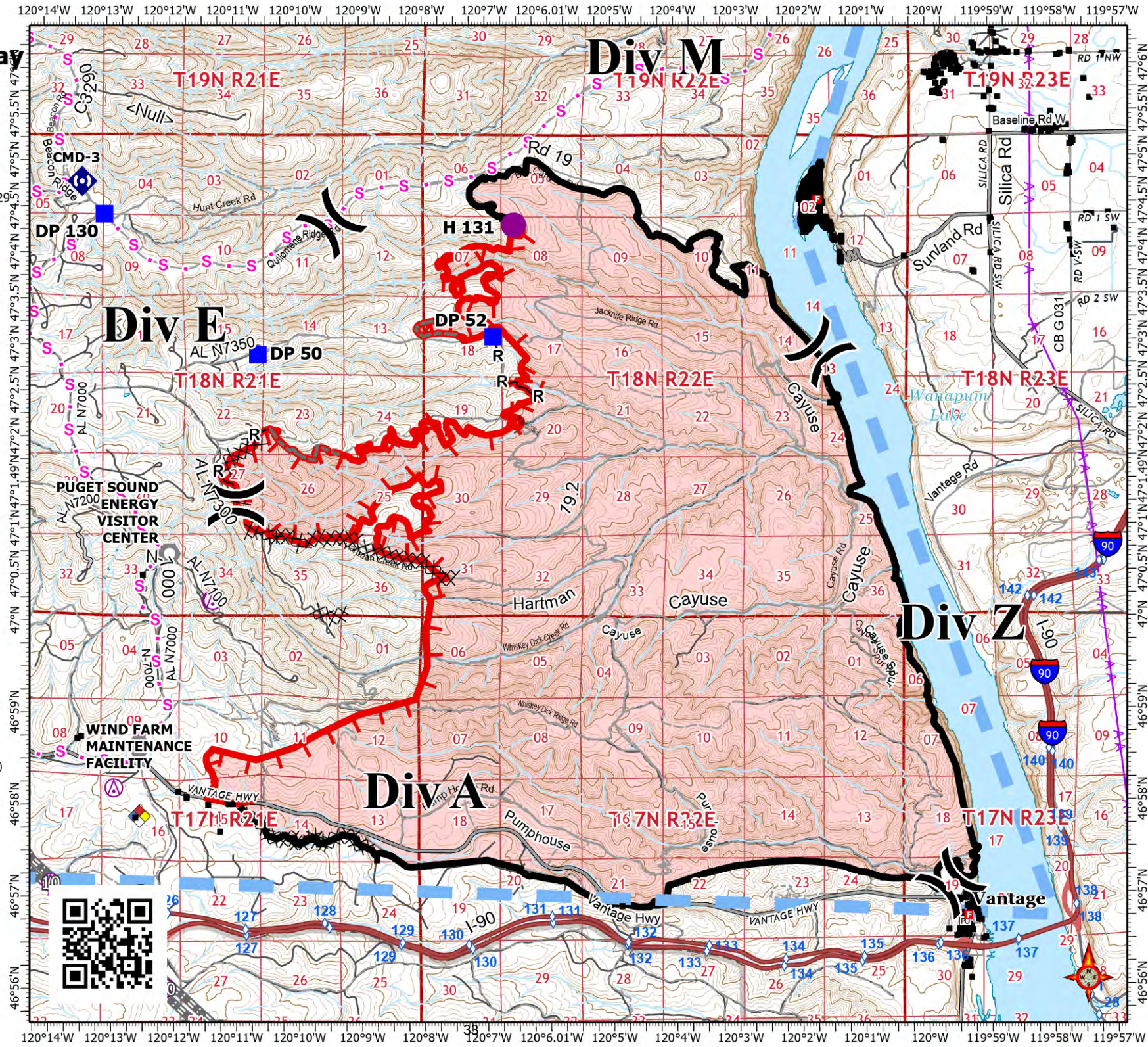
08/07/2022 Day Shift  
32,259 acres at 08/06/2022 @ 2029

- Helispot
- X Division Break
- Drop Point
- Landmark
- ◆ Repeater
- ◆ Possible IR Heat Source
- Fire Station
- Structures
- ⊗ Contaminated Site
- ⊗ Aerial Hazard
- X Completed Dozer Line
- R Completed Road as Line
- S Planned Secondary Line
- Other
- ▭ Temporary Flight Restriction
- ▭ Contained
- ▭ Uncontained Fire Edge
- ▭ BPA Transmission Lines
- A Utility Line
- ▭ Expressway
- ▭ Local Connector
- ▭ Local Road
- ▭ Ramp
- ▭ 4WD
- ▭ Trail
- ▭ State or Territory
- ▭ County or Equivalent
- ▭ Department of Defense
- ▭ Wildfire Daily Fire Perimeter
- ▭ IR Heat Perimeter
- ▭ IR Scattered Heat
- ▭ Bureau of Land Management (BLM)
- ▭ Bureau of Reclamation (BOR)
- ▭ Department of Defense (DOD)
- ▭ State
- ▭ Private
- ▭ Undetermined



S. Bushnell  
08 04 22  
2103 Hours

Acres from IR and sketch  
Datum: North American 1983 HARN

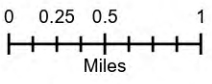




# Cow Canyon WA-SES-000277 IAP Map

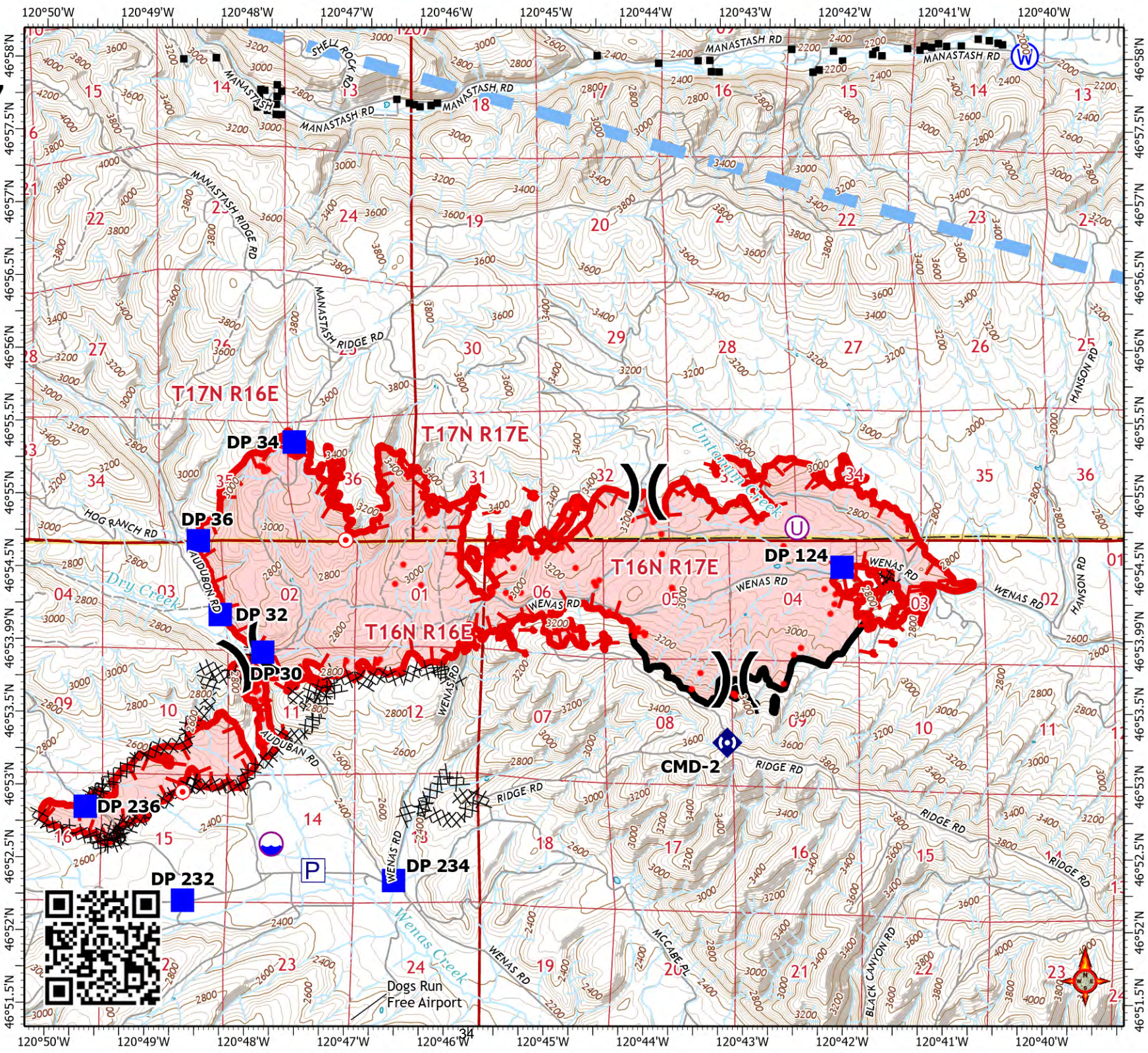
08/07/2022 Day Shift  
4870 acres at 08/06/2022 @ 2100

- Pump
- Dip Site
- Unimproved Landing Area
- Division Break
- Drop Point
- Hot Spot - Spot Fire
- Water Development or Draft Site
- Repeater
- Water Source
- IR Isolated Heat Source
- Structures
- Campground
- Campsite
- Forest Service Facility
- Forest/Region HeadQtrs Office
- Lookout - Permanent
- Picnic Area
- Ranger District Office
- Roadside Park
- Trailhead
- Winter Recreation Area
- Completed Dozer Line
- Temporary Flight Restriction
- Fire Edge (Field Collection)
- Contained
- Uncontained Fire Edge
- Gasline Route
- Local Road
- 4WD
- State or Territory
- County or Equivalent
- Fire Area
- IR Heat Perimeter
- IR Intense Heat
- IR Scattered Heat
- State
- Private



M. Tonkel  
08 06 22  
2118 Hours

Acres from IR and Sketch  
Datum: North American 1983 HARN





## Incident Maps

For incident maps scan the QR code on the cover of the IAP to open the 'Current Maps' folder. There are also general area transportation maps named large\_color\_wenas.pdf and large\_color\_whiskeydick\_quilomene.pdf.

### How to Download and Open Maps in Avenza

#### Method 1: From a browser

1. Tap on the desired map link and wait for the preview.  
*\* If it fails to load, use method 2 instead*
2. Tap the 'send to' icon (square with up arrow)
3. Choose the Avenza app

#### Method 2: From Avenza direct

1. Tap and hold on the desired map link, then choose 'copy' to copy the direct URL to the map
2. Launch the Avenza app
3. When not in any map... Tap the + (plus) icon at the top of the screen
4. Choose the load from URL option (last choice)
5. Paste the direct URL to the map
6. Tap 'Done' ; the map will begin downloading

### How to Send Map Updates to the Situation Unit

Send map updates by email to [2022.cowcanyon.situation@firenet.gov](mailto:2022.cowcanyon.situation@firenet.gov) or [2022.vantagehighway.situation@firenet.gov](mailto:2022.vantagehighway.situation@firenet.gov) or text/call the Situation Unit at 360-584-3373. Make sure to include your name, position and explanation of the update you send.

1. Open the map in Avenza.
2. Click the pin with three lines near the lower-right corner.
3. *iPhone:* In the lower right, click the square with up arrow. From the pop-up menu, choose Export to Others.  
*Android:* In the lower right, click the circle with three lines. Click the pop-up circle with up arrow.
4. Set these options:
  - a. Filename – leave alone
  - b. Export Format – choose SHP, GPX or KML
  - c. Data – all features
  - d. Image size – no image
5. Click the Export button in the upper-right corner.
6. When the export is ready, choose your Mail application.
7. Send the email to the addresses listed above.
8. Your email needs to include an explanation of the data you are sending.

If you don't have Avenza please draw corrections and new features on your paper map, take a picture of it and email or text it to the email or phone number listed above.

Thanks for your help!

<b>UNIT LOG</b>	1. Incident Name	2. Date Prepared	3. Time Prepared
4. Unit Name/Designators	5. Unit Leader (Name and Position)	6. Operational Period	
7. Personnel Roster Assigned			
Name	ICS Position	Home Base	
8. Activity Log			
Time	Major Events		
9. Prepared by (Name and Position)			



## COVID-19 Mitigations for Cow Canyon/Vantage Road Fires

- Masks are not required indoors unless working in a county with a HIGH COVID-19 community level. Currently, Kittitas County community level is LOW and Yakima County is MEDIUM (masking indoors is optional).
- Conduct daily verbal screening checks within crews, report any COVID-like symptoms to your direct supervisor. Supervisors should report any positive symptoms to the Medical Unit for next steps.
- Observe social distancing standards while waiting in line for food and limit contact with others outside of your crew in the food service line. If possible, send crew representatives to pick up meals.
- Practice good personal hygiene, wash hands frequently and disinfect high-traffic areas on a regular basis.
- Limit close contact between firefighters and the public as much as possible to prevent exposure and spread.





# EMERGENCY PLAN INCIDENT WITHIN AN INCIDENT

## ON SCENE INCIDENT COMMANDER

In the event of an accident or medical incident of any size, your primary responsibility is to ENSURE that the victim(s) receive prompt and effective Triage, Treatment, Extrication and Transport.

- **ENSURE THE MEDICAL INCIDENT REPORT IN THE INCIDENT ACTION PLAN IS BEING USED AND FOLLOWED- \*IF DETERMINED TO BE A GREEN, DO NOT DECLARE EMERGENCY TRAFFIC AND ONLY COMPLETE LINE 1-4 ON MIR\*.**
- Conduct size-up of the incident nature of accident, number type of resources involved, latitude and longitude location (DD°MMM.MM format): notify incident communications center and supervisor, request assistance as needed.
- Order and coordinate medical and support response to the accident.
- Evaluate special needs (law enforcement, haz mat, etc.).
- Clear the command frequency if medical emergency, coordinate with incident communications and air attack for air medical transportation needs.
- Preserve and photograph the scene for accident investigation.
- Remain aware of surroundings and the status of the main incident (delegate personnel to monitor the main fire) to ensure safety of medical treatment personnel.
- Until relieved, supervise and manage all personnel involved at the incident scene.

# MEDICAL PLAN (ICS 206 WF)

<b>Incident/Project Name</b>		<b>1. Operational Period</b>					
<b>Vantage Highway</b>		<b>August 7<sup>th</sup>/8<sup>th</sup>, 2022</b> <b>0600-0600</b>					
<b>2. Ambulance Services</b>							
<b>Name</b>	<b>Complete Address</b>	<b>Phone</b>		<b>Advanced Life Support (ALS)</b>			
				Yes	No		
Kittitas Valley Fire & Rescue	400 E. Mt View. Ave. Ellensburg, WA 98926	911 (509) 933-7231		X			
<b>3. Air Ambulance Services</b>							
<b>Name</b>	<b>Phone</b>		<b>Location</b>				
Life Flight Network	800-232-0911		Moses Lake				
Airlift Northwest	800-426-2430 or 911		Wenatchee				
<b>4. Hospitals</b>							
<b>Name</b> <b>Complete Address</b>	<b>Coordinate Standard</b> Degrees Decimal Minutes DD° MM.MMM' N - Lat DD° MM.MMM' W - Long	<b>Travel Time</b> From Vanatge Air Gnd		<b>Phone</b>	<b>Helipad</b> Yes No		<b>Level</b> <b>of Care</b> <b>Facility</b>
Kittitas Valley Health 603 S Chestnut Ellensburg, WA 98926	Lat: 46° 59' 13.92" N	13	30	509-962-9841	X		Level 4 Trauma
	Long: 120° 32' 11.976" W	min	min				
Samaritan Healthcare 801 E Wheeler rd. Moses Lake, WA 98837	Lat: 47° 7' 43.212" N	22	45	509-826-1760	X		Level 3 Trauma
	Long: 119° 15' 54.972" W	Min	min				
Harborview Medical 325 9 <sup>th</sup> Ave Seattle, WA 98104	Lat: 47°36.1897' N	60	2	541-222-6929	X		Level 1 Trauma Burn Center
	Long: 122°19.4759' W	min	Hr				
<b>5. Division   Branch   Group</b>		<b>Capability</b>		<b>Personnel</b>			
<b>Div A/Z</b>		AMR Ambulance E32					
<b>Div E</b>		Drew Perry O-25					
<b>Div M</b>		Michael Schmidtgall O-27					
<b>Night</b>		911					
<b>6. Prepared By (Medical Unit Leader)</b>			<b>7. Date/Time</b>		<b>8. Reviewed By (Safety Officer)</b>		<b>9. Date/Time</b>
Lee Venning			08/06/2022 1800		Jack Cates <i>Jack Cates</i>		08/06/2022 1800

# MEDICAL PLAN (ICS 206 WF)

Incident/Project Name		1. Operational Period						
<b>Cow Canyon Fire</b>		<b>August 7<sup>th</sup>/8<sup>th</sup>, 2022 0600-0600</b>						
2. Ambulance Services								
Name	Complete Address	Phone		Advanced Life Support (ALS)				
		Yes	No					
Kittitas Valley Fire & Rescue (North)	400 E. Mt View. Ave. Ellensburg, WA 98926	911  (509) 933-7231		X				
Yakima AMR (South)	229 South 2nd Avenue Yakima, Washington 98902	911  (509) 453-6561		X				
3. Air Ambulance Services								
Name	Phone	Location						
Life Flight Network	800-232-0911	Moses Lake						
Airlift Northwest	800-426-2430 or 911	Wenatchee						
4. Hospitals								
Name Complete Address	Coordinate Standard Degrees Decimal Minutes DD° MM.MMM' N - Lat DD° MM.MMM' W - Long		Travel Time From Vanatge		Phone	Helipad		Level of Care Facility
	Lat:	Long:	Air	Gnd		Yes	No	
Yakima Valley Memorial 2811 Tieton Dr Yakima, WA 98902	46° 35' 37.68" N	120° 32' 51.972" W	13 min	30 min	509-575-8100	X		Level 3 Trauma
Kittitas Valley Health 603 S Chestnut Ellensburg, WA 98926	46° 59' 13.92" N	120° 32' 11.976" W	22 Min	45 min	509-962-9841	X		Level 4 Trauma
Harborview Medical 325 9 <sup>th</sup> Ave Seattle, WA 98104	47° 36.1897' N	122° 19.4759' W	60 min	2 Hr	541-222-6929	X		Level 1 Trauma Burn Center
5. Division   Branch   Group	Capability			Personnel				
<b>Div C</b>	Beyond The Edge (BTE) REM O-31							
<b>Div L</b>	Protection 1 Ambulance E-30							
<b>Div W</b>	Clark-Cowlitz Ambulance E-29      Medic Wunsch O-44							
<b>Night</b>	Ballard Ambulance E-16							
6. Prepared By (Medical Unit Leader)	7. Date/Time	8. Reviewed By (Safety Officer)			9. Date/Time			
Lee Venning	08/06/2022 1800	Jack Cates <i>Jack Cates</i>			08/06/2022 1800			

# MEDICAL PLAN (ICS 206 WF)

Controlled Unclassified Information//Basic

## Medical Incident Report

**FOR A NON-EMERGENCY INCIDENT, WORK THROUGH CHAIN OF COMMAND TO REPORT AND TRANSPORT INJURED PERSONNEL AS NECESSARY.**

**FOR A MEDICAL EMERGENCY: IDENTIFY ON SCENE INCIDENT COMMANDER BY NAME AND POSITION AND ANNOUNCE "MEDICAL EMERGENCY" TO INITIATE RESPONSE FROM IMT COMMUNICATIONS/DISPATCH.**

Use the following items to communicate situation to communications/dispatch.

1. CONTACT COMMUNICATIONS / DISPATCH (**Verify correct frequency prior to starting report**)

*Ex: "Communications, Div. Alpha. Stand-by for Emergency Traffic."*

2. INCIDENT STATUS: *Provide incident summary (including number of patients) and command structure.*

*Ex: "Communications, I have a Red priority patient, unconscious, struck by a falling tree. Requesting air ambulance to Forest Road 1 at (Lat./Long.) This will be the Trout Meadow Medical, IC is TFLD Jones. EMT Smith is providing medical care."*

Severity of Emergency / Transport Priority	<input type="checkbox"/> RED / PRIORITY 1 Life or limb threatening injury or illness. Evacuation need is IMMEDIATE <i>Ex: Unconscious, difficulty breathing, bleeding severely, 2° – 3° burns more than 4 palm sizes, heat stroke, disoriented.</i> <input type="checkbox"/> YELLOW / PRIORITY 2 Serious Injury or illness. Evacuation may be DELAYED if necessary. <i>Ex: Significant trauma, unable to walk, 2° – 3° burns not more than 1-3 palm sizes.</i> <input type="checkbox"/> GREEN / PRIORITY 3 Minor Injury or illness. Non-Emergency transport <i>Ex: Sprains, strains, minor heat-related illness.</i>	
Nature of Injury or Illness & Mechanism of Injury		<i>Brief Summary of Injury or Illness (Ex: Unconscious, Struck by Falling Tree)</i>
Transport Request		<i>Air Ambulance / Short Haul/Hoist Ground Ambulance / Other</i>
Patient Location		<i>Descriptive Location &amp; Lat. / Long. (WGS84)</i>
Incident Name		<i>Geographic Name + "Medical" (Ex: Trout Meadow Medical)</i>
On-Scene Incident Commander		<i>Name of on-scene IC of Incident within an Incident (Ex: TFLD Jones)</i>
Patient Care		<i>Name of Care Provider (Ex: EMT Smith)</i>

3. INITIAL PATIENT ASSESSMENT: *Complete this section for each patient as applicable (start with the most severe patient)*

Patient Assessment: See IRPG page 106

Treatment:

4. TRANSPORT PLAN:

Evacuation Location (if different): *(Descriptive Location (drop point, intersection, etc.) or Lat. / Long.)* Patient's ETA to Evacuation Location:

Helispot / Extraction Site Size and Hazards:

5. ADDITIONAL RESOURCES / EQUIPMENT NEEDS:

*Example: Paramedic/EMT, Crews, Immobilization Devices, AED, Oxygen, Trauma Bag, IV/Fluid(s), Splints, Rope rescue, Wheeled litter, HAZMAT, Extrication*

6. COMMUNICATIONS: Identify State Air/Ground EMS Frequencies and Hospital Contacts as applicable

Function	Channel Name/Number	Receive (RX)	Tone/NAC *	Transmit (TX)	Tone/NAC *
COMMAND					
AIR-TO-GRND					
TACTICAL					

7. CONTINGENCY: **Considerations:** *If primary options fail, what actions can be implemented in conjunction with primary evacuation method? Be thinking ahead.*

8. ADDITIONAL INFORMATION: *Updates/Changes, etc.*

**REMEMBER:** Confirm ETA's of resources ordered. Act according to your level of training. Be Alert. Keep Calm. Think Clearly. Act Decisively.

Controlled Unclassified Information//Basic