

- INCIDENT ACTION PLAN -

# Vantage Highway

## Cow Canyon

### Vantage Highway

WA-SES-000263  
PN PX8Y (1522)  
221-CBA

### Cow Canyon

WA-SES-000277  
PN PYS3 (1522)  
221-CBB



DOWNLOAD  
IAP and MAPS



SCAN QR for BRIEFING  
OR  
ZOOM PHONE IN  
+1 253 215 8782  
Meeting ID: 886 8227 5977  
Passcode: 830227




*August 8, 2022 - 0600-1800*

## INCIDENT OBJECTIVES (ICS 202)

<b>1. Incident Name:</b>	<b>2. Operational Period: 0600-1800</b>	
VANTAGE HIGHWAY / COW CANYON	Date/Time From: 08/08/2022 0600      MON	Date/Time To: 08/08/2022 1800      MON
<b>3. Objective(s):</b>		
<ul style="list-style-type: none"> <li>• Provide for firefighter and public safety using the Deliberate Risk Analysis process and implement reasonable mitigations for identified hazards.</li> <li>• Minimize impacts to communities, infrastructure, and acres burned on private lands.</li> <li>• Protect tribal, cultural, aquatic and wildlife resources, and sensitive plant sites.</li> <li>• Provide Initial Attack response and assistance for private and public lands within the delegated area.</li> <li>• Maintain and enhance relationships with cooperators, stake holders, landowners, and communities by providing accurate and timely information.</li> <li>• Manage cost commensurate with values at risk and maintain fiscal accountability.</li> <li>• Treat each other with dignity and respect and act in a professional manner while on the fire and in the community.</li> <li>• Ensure COVID-19 best management practices are in place and follow local CDC guidelines.</li> </ul>		
<b>4. Operational Period Command Emphasis:</b>		
Implement firefighting tactics to minimize fire growth with the greatest chance of success and the least amount of risk to firefighter and aviation resources as practical to meet incident objectives.		
<b>General Situational Awareness:</b>		
Fighting fire in light flashy fuels under hot, dry, and windy conditions poses great potential for rapid fire growth. Anticipate changes in fire behavior before it happens and ensure Lookouts, Communications, Escape Routes, and Safety Zones are adequate. Maintain accountability of all assigned resources while engaged on the fire line.		
<b>5. Site Safety Plan Required?</b> Yes <input type="checkbox"/> No <input checked="" type="checkbox"/>		
<b>Approved Site Safety Plan(s) Located</b>		
<b>6. Incident Action Plan</b> (the items checked below are included in this Incident Action Plan):		
<input checked="" type="checkbox"/> ICS 202 <input checked="" type="checkbox"/> ICS 203 <input checked="" type="checkbox"/> ICS 204 <input checked="" type="checkbox"/> ICS 205 <input type="checkbox"/> ICS 205A <input checked="" type="checkbox"/> ICS 206	<input type="checkbox"/> ICS 207 <input type="checkbox"/> ICS 208 <input checked="" type="checkbox"/> ICS 220 <input checked="" type="checkbox"/> Map/Chart <input checked="" type="checkbox"/> Weather Forecast/Tides/Currents	<b>Other Attachments:</b> <input checked="" type="checkbox"/> HUMAN RESOURCE MESSAGE <input checked="" type="checkbox"/> UNIT LOG <input type="checkbox"/> _____ <input type="checkbox"/> _____
<b>7. Prepared by:</b> MIKE CHARTER	<b>Position/Title:</b> PSC2	<b>Signature:</b> <i>Mike Charter</i>
<b>8. Approved by Incident Commander:</b>	<b>Name:</b> BOBBY SHINDELAR	<b>Signature:</b> <i>Bobby Shindelar</i>
<b>ICS 202</b>	<b>IAP Page</b>	<b>Date/Time:</b> 08/07/2022 2000

## ORGANIZATION ASSIGNMENT LIST (ICS 203)

<b>1. Incident Name:</b>		<b>2. Operational Period:</b> 0600-1800	
VANTAGE HIGHWAY / COW CANYON		Date/Time From: 08/08/2022 0600 MON	Date/Time To: 08/08/2022 1800 MON
<b>3. Incident Commander(s) and Command Staff:</b>		CHIEF KEVIN HAUGHTON PAUL FOOTEN (T)	
IC/UC	JEFF DIMKE	SUPPLY UNIT	JOHN KAUPA
DEPUTY	BOBBY SHINDELAR	FACILITIES UNIT	CALVIN OHLSON-KIEHN WHIT SPENCER (T)
SAFETY OFFICER	JACK CATES; TAIJA CORSO	GROUND SUPPORT UNIT	DAVE HARSH
INFORMATION OFFICER	JOEL BRUMM LIV STECKER (T)	COMMUNICATIONS UNIT	MISSY PARKER
LIAISON OFFICER	SCOTT CRAWFORD JEFF SEVIGNEY (T)	MEDICAL UNIT	EAMONN RYAN LEE VENNING ;JOSH ALEXANDER (T)
HUMAN RESOURCE SPECIALIST	SUSIE MANEZES	FOOD UNIT	ALEX LILLA
		SECURITY UNIT	
<b>4. Agency/Organization Representative(s):</b>		<b>7. Operations Section:</b>	
<b>Agency/Organization</b>	<b>Name</b>		
BLM	CHRIS SHERIDAN	OPS SECTION CHIEF	AARON ROWE; TONY ENGEL KURT RANTA (T); CODY ACORD (T)
DNR	TODD WELKER	PLANNING OPS	JEFF BOUSCHOR JEROMY WILSON (T)
WDFW - WHICKEY DICK/QUILOMENE	HANNAH BATES	STRATEGIC OPS	TONY ENGEL
WDFW - COLOCKUM	PETE LOPUSHINSKI		
WDFW - WENAS	MELINDA HUGHES	DIVISION/GROUP	A/Z (VANTAGE HWY)   SAM STEINSHOUER
KVFR	JOHN SINCLAIR	DIVISION/GROUP	E/M (VANTAGE HWY)   BOB HINDS
KITTITAS CO EMERG MGMT	DARREN HIGASHIAMA	DIVISION/GROUP	C (COW CANYON)   MATT KENNEDY CARSON ZEPP (T)
YAKIMA CO EMERG MGMT	TONY MILLER	DIVISION/GROUP	L (COW CANYON)   TED HARGRAVES IAN MCCORD (T)
BLM READ (VANTAGE HWY)	ERIC ELLIS CLARINDA WILSON	DIVISION/GROUP	W (COW CANYON)   BRIAN CAMPBELL
<b>5. Planning Section:</b>		DIVISION/GROUP	STRUCTURE (COW CANYON)   RICK WOODALL
CHIEF	MIKE CHARTER MARGE HUTCHINSON	<b>7b. Air Operations Branch:</b>	
RESOURCES UNIT	JILL JOHNSON	AIR OPS BRANCH DIRECTOR	PAUL BALFOUR
SITUATION UNIT	DAVE WISCHER	AIR SUPPORT SUPERVISOR	TIM LYDA
DOCUMENTATION UNIT	SUSIE MANEZES (T)	<b>8. Finance/Administration Section:</b>	
DEMOBILIZATION UNIT	MIKE HESTON	CHIEF	CHERI FULLER; SARAH THORSON (T) CHRISTINA GOEBEL
FIRE BEHAVIOR ANALYST	DON STRAND	TIME UNIT	CAROL LONG STEVE CROW (T)
TRAINING SPECIALIST	HANK FALCON	PROCUREMENT UNIT	MARK BOHNET
GIS SPECIALIST	SHAWN BUSHNELL MIKE TONKEL (T)	COST UNIT	KAY HIGH (VIRTUAL)
TECHNOLOGY SUPPORT SPECIALIST	GEORGE JENKINS DAVE JOHNSON	COMPENSATION UNIT	
INCIDENT METEOROLOGIST	BOB TOBIN		
<b>6. Logistics Section:</b>			
CHIEF	KEVIN HAUGHTON PAUL FOOTEN (T)		
<b>9. Prepared By:</b>	<b>Name:</b> JILL JOHNSON	<b>Position/Title:</b> RESL	<b>Signature:</b> 
ICS 203	IAP Page	<b>Date/Time:</b> 08/07/2022 2000	

## Fire Weather Forecast

**FORECAST NO:** 4  
**PREDICTION FOR:** Monday  
**Shift Date:** August 7, 2022  
**TIME AND DATE**

**INCIDENT:** Cow Canyon-Vantage Highway Fires  
**UNIT:** DNR  
**SIGNED:** Bob Tobin  
**Incident Meteorologist (IMET)**

**FORECAST ISSUED:** 8/07/2022 at 2000

*Bob Tobin*

---

### ...Heat Advisory today and through this evening...

**Weather Discussion:** Weak high pressure will be over the Pac NW on Monday. This will result in a warming and drying trend. Temperatures will be well above normal. In addition, very dry air is moving into the region which will lower the relative humidity. Luckily winds will be light and terrain driven through Tuesday. A low pressure system is moving north along the west coast. This will pump moisture into the region Tuesday and Wednesday. This will lead to a chance of showers and thunderstorms...mainly near the Cascade crest Tuesday night and Wednesday. Expect a cool down with gusty winds beginning Wednesday as the low pressure system moves through the region.

### WEATHER FORECAST:

#### Today:

**SKY/WEATHER:** Mostly Sunny and warm. Some high level clouds moving through the area.

**High Temperature...**90-95 on Cow Canyon...94-100 on Vantage Highway.

**Min RH.....**15-20% on Cow Canyon...10-15% on Vantage Highway.

**20-FOOT WINDS:** South-Southeast 5-10 mph...this is mainly upslope.

**CWR (>=0.10")....** 0%    **LAL....**1.    **Haines Index...4** (Low)    **Mixing Height...9500 ft AGL**

#### Tonight:

**SKY/WEATHER:** Variable high clouds...Areas of smoke will cause visibility challenges.

**Low Temperature...**60-65 on Cow Canyon...70-75 on Vantage Highway.

**Max RH.....**40-45% on Cow Canyon...30-35% on Vantage Highway.

**20-FOOT WINDS:** Northwest 5-10 mph.

**CWR (>=0.10")....**0%    **LAL...1.**    **Inversion: Becoming moderate to strong after 2100.**

#### Tuesday:

**SKY/WEATHER:** Sunny early...increasing clouds through the afternoon. Warm.

**High Temperature...**90-95 on Cow Canyon...93-102 on Vantage Highway.

**Min RH.....**15-20% on Cow Canyon...12-17% on Vantage Highway.

**20-FOOT WINDS:** Northeast-east 5-10 mph with gusts to 15 mph after 1000.

**CWR (>=0.10")....**0%    **LAL....1**    **Haines Index...4** (Low)    **Mixing Height...10000 ft AGL**

### Extended Outlook

**Wednesday...**A chance of showers and thunderstorms overnight and through the morning. Clearing through the afternoon. Low: 65-75...High: 85-95. Min RH: 25-35% Winds: variable 8-12 mph...becoming southwest 10-12 mph with gusts to 25 mph.

**Thursday...** Partly cloudy in the morning...becoming sunny. Low: 55-65...High: 80-90. Min RH: 20-25% Winds: Southwest 8-12 mph with gusts to 20 mph.

## FIRE BEHAVIOR FORECAST

FORECAST NUMBER: 4	TYPE OF FIRE: WILDFIRE
FIRE NAME: Cow Canyon, Vantage Highway	OPERATIONAL PERIOD: DAY SHIFT Aug. 8, 2021
DATE ISSUED: Aug. 7, 2022	TIME ISSUED: 2000 HOURS
UNIT: SES	SIGNED: ___DON STRAND, FBAN_____

### INPUTS

**WEATHER SUMMARY:** See attached spot weather forecast. HOT and DRY - temps in the mid 90's to 100. Min RH's near 10-12%. Winds- South Southeast 5 to 10 mph, mainly upslope.

**FUELS:** Cow Canyon - grass and brush with timber and brush stringers in draws with larger pockets of timber on northern aspects. Note-Fuel loading in grass fuels is much higher than recent years. Fuel moistures are dry with herbaceous estimated to be partially cured but dry enough to carry fire in most areas. Woody fuels are dry enough for fire spread.

Vantage Highway – Grass fuels are cured and brush fuels are mostly cured. Note- fuel loading in grass fuels is much higher than past years.

Energy Release Component for the area fires are near the 95<sup>th</sup> to 97<sup>th</sup> percentile.

### OUTPUTS

#### FIRE BEHAVIOR

**GENERAL:** Fire behavior potential continues to increase due to warming and drying. Also due to current fuel and weather conditions, the burning period is increasing. Expect smoldering and creeping fire behavior. Potential for flare ups in areas of dirty burns will continue. Torching with spotting is still possible. Adjacent fuels are very receptive to spots and any spot fires will initiate quickly and spread rapidly. Most spotting should be short range with max spotting distance near 0.3 miles. Probability of ignition is 90 %.

Head fire rates of spread in the grass/sage will be approaching 60 feet/minute. In the timber fuels, rates of spread will be near 20 feet per minute with single and group torching.

#### SPECIFIC:

**Cow Canyon:** Continue to watch for spots. Expect smoldering and creeping fire behavior. Flare ups in areas of dirty burns possible, if near fire lines, potential for spotting exists. Timber stringers along the north flank may align with the forecasted S-SE wind.

**Vantage Highway:** Expect limited smoldering in areas that were recently burned. A slight chance for flare ups exists.

**Initial Attack:** In the event resources respond to a new start, update your Situational Awareness by observing the fuels, weather, and topography where the new fire is located. Any new start in light flashy fuels (grass/brush) will see rapid rates of spread.

**AIR OPERATIONS:** Potential exists for smoke haze over the fire area today.

### SAFETY

With the hot weather, light winds and burned ground, dust devil development is likely. If they move across any hot spots near fire lines, they could be a means to cause spot fires.

Some stump holes are burning deep and are a walking hazard.



14.WEATHER IS GETTING HOTTER AND DRIER

# Safety Message

8 August 2022

INCIDENT: VANTAGE HIGHWAY/COW CANYON

OPERATIONAL PERIOD: 0600-1800

## TOPICS:

### EXTRACTION

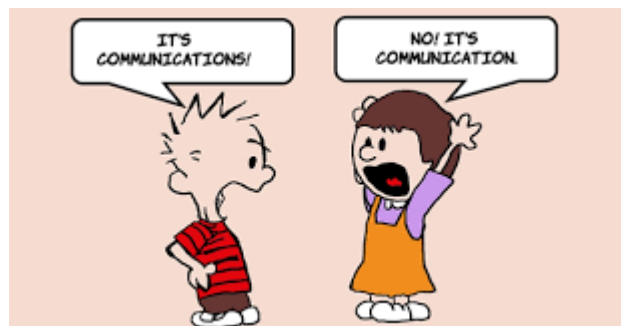
Review extraction routes and methods. Identify equipment on hand and needed to facilitate extraction over rough terrain. Recognize precautions that need to be taken for different types of injuries.

### WARMER WEATHER/INCREASED FIRE BEHAVIOR

Temperatures will rise and RH will drop today. PIG and ERC will be on the rise. Pay close attention to unburned pockets of fuel for rate of spread and spotting potential. Maintain awareness of fire behavior on new starts if supporting local IA. Many fatalities and injuries occur in weather transition days where increased fire behavior is observed in light fuels.

### COMMON BARRIERS TO EFFECTIVE COMMUNICATION INCLUDE: (Part One)

Stress and out-of-control emotion. When you're stressed or emotionally overwhelmed, you're more likely to misread other people, send confusing or off-putting nonverbal signals, and lapse into unhealthy knee-jerk patterns of behavior. To avoid conflict and misunderstandings, you can learn how to quickly calm down before continuing a conversation.



SAFETY OFFICER: Jack Cates, Taija Corso

# Deliberate Risk Assessment-Hazard Summary

## 8 August 2022

Hazard	Mitigation	Post Risk
Extraction Time	Identify medivac sites and helispots. Initiate ground transport to accident site. Identify EMT's from resources assigned to division. Provide line qualified paramedics to each division as available. Review IWI protocol to ensure familiarity. Utilize short haul in remote areas. Evaluate on-going need for repositioning medical personnel.	High
Snags	Use avoidance to limit exposure time. Snag to avoid exposure. Use qualified fallers and blasting if needed. Conduct on- going risk analysis of all work areas. Follow Hazard Tree Safety Guidelines (IRPG page 20).	High
Transportation	Signing of all incident roads that provide access to divisions. Daily updated travel plan maps. Practice defensive driving. In local communities obey the posted speed limits. Use reader boards to control entry as needed. Identify and evaluate contingency and alternate escape and travel routes, implement controls as needed.	High
Heavy Equipment	Post lookouts around equipment work areas. Establish communications with equipment boss and operator. Do not work down slope from equipment.	High
Aircraft	Utilize Air Attack. Ensure all resources are a safe distance from all bucket and retardant drops. Establish LCES. Utilize air to ground primary radio channel. Reference IRPG (Safe aircraft operations pg. 61). Ensure IA resources have coordination with unassigned local air resources to provide deconfliction.	High
Public Interaction	Implement road and area closures in and adjacent to the perimeter.	Moderate
Unburned Fuels/Firing Ops	Establish LCES. Ensure management action points are implemented and followed. Weather updates as needed during burning operations. Locate indirect firelines to minimize the amount of unburned fuels. Follow Interagency Ignition Guide. Ensure communications between all firing operations. Establish road security at all firing sites. Follow approved firing plan for unburned fuels.	Moderate
Steep Terrain/Gravity	Do not work crews above or below each other. Post lookouts for rolling material. Watch footing in loose soil, rock and around vegetation. Do not work below heavy equipment. Scout and identify travel routes. Establish LCES.	Moderate
Physical Factors	Maintain hydration schedule. Closely monitor work rate and implement rest periods. Maintain nutrition. Ensure adequate work/rest.	Moderate
Environmental Factors	Assign medical personnel to camp. Assess for known allergies and report to medical personnel. Obtain Bee Bopper/wasp spray and yellow jacket traps. Locate dumpsters/trash, food and feeding areas away from sleeping and assembly areas.	Moderate
Fire Behavior	Be aware of burn windows, min/max RH for local conditions. Obtain hourly weather conditions from each Division.	Moderate
Structure Protection	Identify and report compromised service poles and maintain one span avoidance area. Identify downed lines. Treat all lines as live. Identify and avoid vehicles, tires, propane tanks.	Moderate
Initial Attack	Ensure identified IA resources are briefed of expectations and ensure communication plan is provided. Ensure resources are briefed on IA command structure. Provide identified crews with area maps.	Low
COVID Viral Transmission	Maintain awareness of health and perform self-checks. Report and isolate if symptomatic. Coordinate with Kittitas County Public Health for testing, reporting and isolation as needed. <b>Follow agency policy for symptomatic or positive test personnel or public health directions, whichever is more stringent.</b>	Low

**Division/Group Assignment List (ICS 204 WF)**  
**Controlled Unclassified Information//Basic**

<b>1. Incident Name:</b>			<b>3.</b>			
VANTAGE HIGHWAY / COW CANYON			<b>Branch:</b>		<b>Division/Group</b>	
<b>2. Operational Period:</b> 0600-1800			<b>A/Z (VANTAGE)</b>			
Date/Time From: 08/08/2022 0600	MON	Date/Time To: 08/08/2022 1800				
<b>4. Operations Personnel</b>						
<b>OPERATIONS CHIEF</b>		AARON ROWE CODY ACORD (T)		<b>DIVISION/GROUP SUPERVISOR</b>		BOB HINDS
<b>AIR OPS BRANCH DIRECTOR</b>		PAUL BALFOUR		<b>SAFETY OFFICER</b>		JACK CATES; TAIJA CORSO
<b>5. Resources Assigned this Period</b>						
Strike Team / Task Force / Resource Designator	LWD	Leader	Number Persons	Drop Off PT./Time	Pick Up PT./Time	
O-28 SOFR	08/16	MARY HUELS	1	KITTITAS/0600	KITTITAS/1800	
C-6 CR2I USFS BOISE **	08/16	CHRISTOPHER KNIGHT	19	KITTITAS/0600	KITTITAS/1800	
NW STRIKE TEAM						
O-24 (C) STEN **	08/16	JOTHAN MCGAUGHEY	1	KITTITAS/0600	KITTITAS/1800	
O-23 (C) STEN (T) **	08/16	TRENTON CROSSLAND	1	KITTITAS/0600	KITTITAS/1800	
E-21 (C) ENG5 DNR NWS E5204 **	08/16	CAMRON ANDERSON	4	KITTITAS/0600	KITTITAS/1800	
E-22 (C) ENG5 DNR PCS E2301 **	08/16	TREY HARTLEY	3	KITTITAS/0600	KITTITAS/1800	
E-23 (C) ENG5 DNR PCS E2205**	08/16	THOMAS TANGEN	4	KITTITAS/0600	KITTITAS/1800	
E-24 (C) ENG5 DNR PCS 1201 **	08/16	FILIPE BARRAGAN	5	KITTITAS/0600	KITTITAS/1800	
E-25 (C) ENG5 DNR OLS E1301 **	08/16	JEFF HAPPE	5	KITTITAS/0600	KITTITAS/1800	
E-32 AMBU AMR ALS	08/16	JACOB AMBACH	2	KITTITAS/0600	KITTITAS/1800	
<b>6. Control Operations/Work Assignments:</b>						
<p>TASK: Monitor, Patrol and Mop up as necessary  PURPOSE: Contain fire within existing footprint to protect community of Vantage, Puget Sound Energy windmills, and the Vantage and I-90 highway corridors  END STATE: Fire is contained north of the Vantage highway and east of the N7000 road. Identified values at risk are protected from further fire spread.</p>						
<b>7. Special Instructions:</b>						
<p>** Resource will be used for IA as needed.  (C) - Identifies resources assigned to the Cow Canyon fire. Reassignment to Vantage Highway fire is in process.</p>						
<b>8. Division/Group Communication Summary</b>						
Function	Channel	RX Frequency N/W	RX Tone/NAC	TX Frequency N/W	TX Tone/NAC	Mode
COMMAND	3	168.4750	156.7	165.4000	156.7	A
TACTICAL	7	166.7750	107.2	166.7750	107.2	A
AIR TO GROUND	14	169.2000		169.2000		A
AIR TO GROUND	15	167.9500		167.9500		A
<b>9. Prepared By (Resource Unit Leader)</b>			<b>Approved By (Planning Section Chief)</b>		<b>Date</b>	<b>Time</b>
JILL JOHNSON			MIKE CHARTER		08/07/2022	1125



**Division/Group Assignment List (ICS 204 WF)**  
**Controlled Unclassified Information//Basic**

<b>1. Incident Name:</b>			<b>3.</b>			
VANTAGE HIGHWAY / COW CANYON			<b>Branch:</b>		<b>Division/Group</b>	
<b>2. Operational Period:</b> 0600-1800			<b>E/M (VANTAGE)</b>			
Date/Time From: 08/08/2022 0600	MON	Date/Time To: 08/08/2022 1800				
<b>4. Operations Personnel</b>						
<b>OPERATIONS CHIEF</b>		AARON ROWE CODY ACORD (T)		<b>DIVISION/GROUP SUPERVISOR</b>		SAM STEINSHOUER
<b>AIR OPS BRANCH DIRECTOR</b>		PAUL BALFOUR		<b>SAFETY OFFICER</b>		JACK CATES; TAIJA CORSO
<b>5. Resources Assigned this Period</b>						
Strike Team / Task Force / Resource Designator	LWD	Leader	Number Persons	Drop Off PT./Time	Pick Up PT./Time	
O-28 SOFR	08/16	MARY HUELS	1	KITTITAS/0600	KITTITAS/1800	
O-9 HEQB (T) **	08/14	ANDREW NAUGHTON	1	KITTITAS/0600	KITTITAS/1800	
C-2 CRW2 DNR CASCADE **	08/16	JOHN MOON	20	KITTITAS/0600	KITTITAS/1800	
E-15 DZR3 DUKES EQUIPMENT **	08/14	STEVEN HALEY	2	KITTITAS/0600	KITTITAS/1800	
O-25 EMTF	08/15	DREW PERRY	1	KITTITAS/0600	KITTITAS/1800	
O-27 EMTF	08/16	MICHAEL SCHMIDTGALL	1	KITTITAS/0600	KITTITAS/1800	
<b>6. Control Operations/Work Assignments:</b>						
<p><b>Div E:</b>  TASK: Monitor, patrol and mop-up as necessary.  PURPOSE: Contain fire within existing footprint to protect Puget Sound Energy windmills and valuable wildlife habitat.  END STATE: Fire is contained east of the N7000 road. Identified values at risk are protected from further fire spread.</p> <p><b>Div M:</b>  TASK: Monitor, patrol and mop-up as necessary.  PURPOSE: Contain fire south of the Quilomene Ridge road to protect Quilomene/Whiskey Dick wildlife management area from additional fire impacts.  END STATE: Fireline in the correct location with the right dimensions to contain the fire.</p>						
<b>7. Special Instructions:</b>						
** Resource will be used for IA as needed.						
<b>8. Division/Group Communication Summary</b>						
Function	Channel	RX Frequency N/W	RX Tone/NAC	TX Frequency N/W	TX Tone/NAC	Mode
COMMAND	3	168.4750	156.7	165.4000	156.7	A
TACTICAL	6	166.7250	107.2	166.7250	107.2	A
AIR TO GROUND	14	169.2000		169.2000		A
AIR TO GROUND	15	167.9500		167.9500		A
<b>9. Prepared By (Resource Unit Leader)</b>			<b>Approved By (Planning Section Chief)</b>		<b>Date</b>	<b>Time</b>
JILL JOHNSON			MIKE CHARTER		08/07/2022	1125

## Division/Group Assignment List (ICS 204 WF)

Controlled Unclassified Information//Basic

<b>1. Incident Name:</b>				<b>3.</b>		
COW CANYON				<b>Branch:</b>	<b>Division/Group</b>  <b>C (COW CANYON)</b>	
<b>2. Operational Period: DAY</b>						
Date/Time From: 08/08/2022 0600	MON	Date/Time To: 08/08/2022 1800	MON			
<b>4. Operations Personnel</b>						
<b>OPERATIONS CHIEF</b>		AARON ROWE KURT RANTA (T);		<b>DIVISION/GROUP SUPERVISOR</b>		MATT KENNEDY CARSON ZEPP (T)
<b>AIR OPS BRANCH DIRECTOR</b>		PAUL BALFOUR		<b>SAFETY OFFICER</b>		JACK CATES; TAIJA CORSO
<b>5. Resources Assigned this Period</b>						
Strike Team / Task Force / Resource Designator	LWD	Leader	Number Persons	Drop Off PT./Time	Pick Up PT./Time	
O-30.71 SOF2	08/18	JOSH NORTHRUP	1	NACHES/0600	NACHES/1800	
C-11.6 TFLD	08/14	DREW VENNICE	1	NACHES/0600	NACHES/1800	
C-11.5 HEQB	08/14	JACOB MAUGHAN	1	NACHES/0600	NACHES/1800	
O-17 HEQB (T)	08/17	PAXTON STONE	1	NACHES/0600	NACHES/1800	
O-48 HEQB (T)	08/20	JASON BUDA	1	NACHES/0600	NACHES/1800	
O-52 HEQB	08/20	CHRIS HARTELOO	1	NACHES/0600	NACHES/1800	
C-11 CRW1 ROGUE RIVER IHC	08/14	AARON SCHUH	20	NACHES/0600	NACHES/1800	
C-13 CRW1 ENTIAT IHC	08/20	DANIEL E PICKARD	22	NACHES/0600	NACHES/1800	
C-10 CRW WENATCHEE RV 74	08/14	BEN MARQUART	22	NACHES/0600	NACHES/1800	
C-12 CRW2 TJ FORESTRY CONTR		VICTOR PEREZ	20	NACHES/0600	NACHES/1800	
C-17 CR2I PATRICK ENVIRONMENTAL	08/13	JOSH BURNAY	20	NACHES/0600	NACHES/1800	
E-13 ENG3 BAILEY ENTERPRISES	08/17	GREG BAILEY	3	NACHES/0600	NACHES/1800	
E-14 ENG4 WILD FIRE SERVICES INC	08/17	MIKE FOSTER	3	NACHES/0600	NACHES/1800	
E-15 ENG4 WILD FIRE SERVICES INC	08/17	STEVE KURVINK	3	NACHES/0600	NACHES/1800	
E-46 ENG4 WILD FIRE SERVICES	08/20	RUBI HERNANDEZ- MARTINEZ	3	NACHES/0600	NACHES/1800	
E-47 ENG5 WILD FIRE SERVICES	08/20	JASON SARE	3	NACHES/0600	NACHES/1800	
E-50 ENG6 BAILEY ENTERPRISES	08/17	CATARINO RABADAN	3	NACHES/0600	NACHES/1800	
<b>8. Division/Group Communication Summary</b>						
Function	Channel	RX Frequency N/W	RX Tone/NAC	TX Frequency N/W	TX Tone/NAC	Mode
COMMAND	1	170.6875	156.7	166.5750	156.7	A
COMMAND	2	171.7500	156.7	164.6750	156.7	A
TACTICAL	4	168.0500	107.2	168.0500	107.2	A
AIR TO GROUND	12	169.6500		169.6500		A
AIR TO GROUND	13	169.8125		169.8125		A
<b>9. Prepared By (Resource Unit Leader)</b>						
JILL JOHNSON			<b>Approved By (Planning Section Chief)</b>		<b>Date</b>	<b>Time</b>
			MIKE CHARTER		08/07/2022	2000

**Division/Group Assignment List (ICS 204 WF)**  
**Controlled Unclassified Information//Basic**

<b>1. Incident Name:</b>				<b>3.</b>		
COW CANYON				<b>Branch:</b>	<b>Division/Group</b>	
<b>2. Operational Period: DAY</b>						
Date/Time From: 08/08/2022 0600 MON		Date/Time To: 08/08/2022 1800 MON		<b>C (COW CANYON)</b>		
<b>4. Operations Personnel</b>						
<b>OPERATIONS CHIEF</b>		AARON ROWE KURT RANTA (T);		<b>DIVISION/GROUP SUPERVISOR</b>		MATT KENNEDY CARSON ZEPP (T)
<b>AIR OPS BRANCH DIRECTOR</b>		PAUL BALFOUR		<b>SAFETY OFFICER</b>		JACK CATES; TAIJA CORSO
<b>5. Resources Assigned this Period</b>						
Strike Team / Task Force / Resource Designator		LWD	Leader	Number Persons	Drop Off PT./Time	Pick Up PT./Time
E-3 WTS2 PINE MOUNTAIN EXCAVATING		08/17	BOB GOSS	1	NACHES/0600	NACHES/1800
E-43 WTS2 KELSIE N BEAMAN		08/20	DUANE LARSON	1	NACHES/0600	NACHES/1800
E-52 WTT1 WE HAUL H2O		08/21	WARREN KIPP	2	NACHES/0600	NACHES/1800
E-2 DZR2 ANDREW DUKE		08/17	ANDY DUKE	4	NACHES/0600	NACHES/1800
E-42 SKG2 DUKE, ANDREW		08/19	JUSTIN DURSTON	2	NACHES/0600	NACHES/1800
E-31 PCT2 PETERSON DIESEL REPAIR		08/20	KYLE PETERSON	2	NACHES/0600	NACHES/1800
O-31 REM BEYOND THE EDGE		08/20		4	NACHES/0600	NACHES/1800
<b>6. Control Operations/Work Assignments:</b>						
TASK: Secure and mop up along fire perimeter, from C/L break to the C/W break along N. Fork Wenas Rd. 100% mop all spots outside primary control lines.						
PURPOSE: Contain fire edge and prevent fire spread to the north or west towards Manastash community or Ellensburg and prevent any further impacts to natural resources and loss of timber.						
END STATE: Fire is contained south of Manastash Ridge and east of North Wenas Road.						
<b>7. Special Instructions:</b>						
Insurance Engine in Division - identifier SG07.						
<b>8. Division/Group Communication Summary</b>						
Function	Channel	RX Frequency N/W	RX Tone/NAC	TX Frequency N/W	TX Tone/NAC	Mode
COMMAND	1	170.6875	156.7	166.5750	156.7	A
COMMAND	2	171.7500	156.7	164.6750	156.7	A
TACTICAL	4	168.0500	107.2	168.0500	107.2	A
AIR TO GROUND	12	169.6500		169.6500		A
AIR TO GROUND	13	169.8125		169.8125		A
<b>9. Prepared By (Resource Unit Leader)</b>			<b>Approved By (Planning Section Chief)</b>		<b>Date</b>	<b>Time</b>
JILL JOHNSON			MIKE CHARTER		08/07/2022	2000

**Division/Group Assignment List (ICS 204 WF)**  
**Controlled Unclassified Information//Basic**

<b>1. Incident Name:</b>				<b>3.</b>		
COW CANYON				<b>Branch:</b>	<b>Division/Group</b>  <b>L (COW CANYON)</b>	
<b>2. Operational Period: DAY</b>						
Date/Time From: 08/08/2022 0600 MON		Date/Time To: 08/08/2022 1800 MON				
<b>4. Operations Personnel</b>						
<b>OPERATIONS CHIEF</b>		AARON ROWE KURT RANTA (T);		<b>DIVISION/GROUP SUPERVISOR</b>		TED HARGRAVES IAN MCCORD (T)
<b>AIR OPS BRANCH DIRECTOR</b>		PAUL BALFOUR		<b>SAFETY OFFICER</b>		JACK CATES; TAIJA CORSO
<b>5. Resources Assigned this Period</b>						
Strike Team / Task Force / Resource Designator		LWD	Leader	Number Persons	Drop Off PT./Time	Pick Up PT./Time
O-30.70 SOF2		08/18	DON WALLER	1	NACHES/0600	NACHES/1800
O-2.11 TFLD **		08/16	FIDEL VERDUZCO	1	NACHES/0600	NACHES/1800
O-65 (V) TFLD		08/27	KENT STANFORD	1	NACHES/0600	NACHES/1800
O-5 HEQB		08/17	CODY PAGEL	1	NACHES/0600	NACHES/1800
O-10 HEQB (T)		08/17	MORGAN REISDORFER	1	NACHES/0600	NACHES/1800
C-5 CRW2 PATRICK ENVIRONMENTAL PR17		08/18	CHAMBERS	20	NACHES/0600	NACHES/1800
C-6 CRW2 P.R. REFORESTATION		08/17	JESUS RAMIREZ	20	NACHES/0600	NACHES/1800
C-14 CRW2 WEST COAST FORM AM5		08/16	ABEL ANGURO	20	NACHES/0600	NACHES/1800
C-16 CRW2 COLUMBIA RV 52		08/16	BRENT MIZELL	21	NACHES/0600	NACHES/1800
E-48 ENG6 WILD FIRE SERVICES INC		08/20	TIMOTHY LOGOZZO	3	NACHES/0600	NACHES/1800
E-49 ENG4 BAILEY ENTERPRISES		08/20	CLIVE BAILEY	3	NACHES/0600	NACHES/1800
E-51 ENG5 ENG5 - BURKHART AARON		08/21	CHRIS SURFACE	3	NACHES/0600	NACHES/1800
E-44 WTS2 KELSI N BEAMAN		08/20	ROBERT GIBSON	1	NACHES/0600	NACHES/1800
E-45 WTS2 RIDGE TOP IRON (6WD)		08/20	TIM WHITEHURST	1	NACHES/0600	NACHES/1800
E-1 DZR3 TOP RAIL LLC				2	NACHES/0600	NACHES/1800
<b>8. Division/Group Communication Summary</b>						
Function	Channel	RX Frequency N/W	RX Tone/NAC	TX Frequency N/W	TX Tone/NAC	Mode
COMMAND	1	170.6875	156.7	166.5750	156.7	A
COMMAND	2	171.7500	156.7	164.6750	156.7	A
TACTICAL	5	168.6000	107.2	168.6000	107.2	A
AIR TO GROUND	12	169.6500		169.6500		A
AIR TO GROUND	13	169.8125		169.8125		A
<b>9. Prepared By (Resource Unit Leader)</b>			<b>Approved By (Planning Section Chief)</b>		<b>Date</b>	<b>Time</b>
JILL JOHNSON			MIKE CHARTER		08/07/2022	2000

**Division/Group Assignment List (ICS 204 WF)**  
**Controlled Unclassified Information//Basic**

<b>1. Incident Name:</b>			<b>3.</b>			
COW CANYON			<b>Branch:</b>		<b>Division/Group</b>	
<b>2. Operational Period: DAY</b>			L (COW CANYON)			
Date/Time From: 08/08/2022 0600 MON		Date/Time To: 08/08/2022 1800 MON				
<b>4. Operations Personnel</b>						
<b>OPERATIONS CHIEF</b>		AARON ROWE KURT RANTA (T);		<b>DIVISION/GROUP SUPERVISOR</b>		TED HARGRAVES IAN MCCORD (T)
<b>AIR OPS BRANCH DIRECTOR</b>		PAUL BALFOUR		<b>SAFETY OFFICER</b>		JACK CATES; TAIJA CORSO
<b>5. Resources Assigned this Period</b>						
Strike Team / Task Force / Resource Designator		LWD	Leader	Number Persons	Drop Off PT./Time	Pick Up PT./Time
E-7 DZR3 TAN INDUSTRIES LLC		08/17	COSMO TAN	2	NACHES/0600	NACHES/1800
E-40 SKG2 KELSI N BEAMAN		08/20	BRANDON JONES	2	NACHES/0600	NACHES/1800
E-41 SKG2 DUKE, ANDREW		08/19	CONRAD SCHELER	2	NACHES/0600	NACHES/1800
E-30 AMB2 PROTECTION -1		08/19	BRAD STINE	2	NACHES/0600	NACHES/1800
O-44 EMPF		08/11	ADAM WUNSCH	1	NACHES/0600	NACHES/1800
<b>6. Control Operations/Work Assignments:</b>						
<p>TASK: Secure and mop up along fire perimeter from W/L Break to the L/C break. 100% mop all spots outside primary control lines.</p> <p>PURPOSE: Contain fire edge and prevent fire spread to the north or east towards Ellensburg and prevent any smoke impacts to I-82 and any further impacts of natural resources.</p> <p>END STATE: Fire is contained north of Umptanum Ridge, south of Manastash Ridge and east of Umptanum Falls trailhead.</p>						
<b>7. Special Instructions:</b>						
<u>Insurance Resources in Division include:</u>						
<ul style="list-style-type: none"> <li>• ENG5 Glacier Peak 04</li> <li>• ENG5 Engine 707</li> <li>• ENG5 SGS</li> <li>• WT Elk Ridge</li> </ul>						
** Resource will be used for IA as needed.						
<b>8. Division/Group Communication Summary</b>						
Function	Channel	RX Frequency N/W	RX Tone/NAC	TX Frequency N/W	TX Tone/NAC	Mode
COMMAND	1	170.6875	156.7	166.5750	156.7	A
COMMAND	2	171.7500	156.7	164.6750	156.7	A
TACTICAL	5	168.6000	107.2	168.6000	107.2	A
AIR TO GROUND	12	169.6500		169.6500		A
AIR TO GROUND	13	169.8125		169.8125		A
<b>9. Prepared By (Resource Unit Leader)</b>			<b>Approved By (Planning Section Chief)</b>		<b>Date</b>	<b>Time</b>
JILL JOHNSON			MIKE CHARTER		08/07/2022	2000

**Division/Group Assignment List (ICS 204 WF)**  
**Controlled Unclassified Information//Basic**

<b>1. Incident Name:</b>				<b>3.</b>		
COW CANYON				<b>Branch:</b>	<b>Division/Group</b>  <b>W (COW CANYON)</b>	
<b>2. Operational Period: DAY</b>						
Date/Time From: 08/08/2022 0600 MON		Date/Time To: 08/08/2022 1800 MON				
<b>4. Operations Personnel</b>						
<b>OPERATIONS CHIEF</b>		AARON ROWE KURT RANTA (T);		<b>DIVISION/GROUP SUPERVISOR</b>		BRIAN CAMPBELL
<b>AIR OPS BRANCH DIRECTOR</b>		PAUL BALFOUR		<b>SAFETY OFFICER</b>		JACK CATES; TAIJA CORSO
<b>5. Resources Assigned this Period</b>						
Strike Team / Task Force / Resource Designator		LWD	Leader	Number Persons	Drop Off PT./Time	Pick Up PT./Time
O-30.72 SOF2		08/19	PAUL BRNA	1	NACHES/0600	NACHES/1800
C-2 CR2I MT BAKER		08/19	ERIC USHER	20	NACHES/0600	NACHES/1800
C-3 CRW2 MR CONTRACTING		08/17	MANUEL JIMENEZ	20	NACHES/0600	NACHES/1800
C-7 CRW2 YAKAMA TYPE 2		08/15	TRAVIS INESS	20	NACHES/0600	NACHES/1800
E-5 WTS2 KING HYDROSEEDING		08/18	WARDEN, DON	1	NACHES/0600	NACHES/1800
E-60 WTS2 R & K WATER SERVICE INC		08/20	JEREMY EGGELSTON	1	NACHES/0600	NACHES/1800
E-61 WTS2 R & K WATER SERVICE INC		08/20	RICK KINTNER	1	NACHES/0600	NACHES/1800
E-9 DZR3 JUSTIN PITTS TRUCKING		08/17	RON LEVANG	2	NACHES/0600	NACHES/1800
E-29 AMB1 CLARK COUNTY FR		08/20	DANIEL FERBER	2	NACHES/0600	NACHES/1800
O-54 EMPF		08/20	TRAVIS WILSON	1	NACHES/0600	NACHES/1800
<b>6. Control Operations/Work Assignments:</b>						
TASK: Secure and mop up along fire perimeter From C/W break to the W/L break. 100% mop all spots outside primary control lines.						
PURPOSE: Contain fire edge and prevent fire spread to the south towards Wenas community and prevent any further impacts of natural resources.						
END STATE: Fire is contained north of Umtanum Ridge and Cow Canyon Road.						
<b>7. Special Instructions:</b>						
<b>8. Division/Group Communication Summary</b>						
Function	Channel	RX Frequency N/W	RX Tone/NAC	TX Frequency N/W	TX Tone/NAC	Mode
COMMAND	1	170.6875	156.7	166.5750	156.7	A
COMMAND	2	171.7500	156.7	164.6750	156.7	A
TACTICAL	6	166.7250	107.2	166.7250	107.2	A
AIR TO GROUND	12	169.6500		169.6500		A
AIR TO GROUND	13	169.8125		169.8125		A
<b>9. Prepared By (Resource Unit Leader)</b>			<b>Approved By (Planning Section Chief)</b>		<b>Date</b>	<b>Time</b>
JILL JOHNSON			MIKE CHARTER		08/07/2022	2000

**Division/Group Assignment List (ICS 204 WF)**  
**Controlled Unclassified Information//Basic**

<b>1. Incident Name:</b>			<b>3.</b>			
COW CANYON			<b>Branch:</b>		<b>Division/Group</b>	
<b>2. Operational Period: DAY</b>					<b>STRUCTURE / IA (COW CANYON)</b>	
Date/Time From: 08/08/2022 0600 MON		Date/Time To: 08/08/2022 1800 MON				
<b>4. Operations Personnel</b>						
<b>OPERATIONS CHIEF</b>		AARON ROWE KURT RANTA (T);		<b>DIVISION/GROUP SUPERVISOR</b>		RICK WOODALL
<b>AIR OPS BRANCH DIRECTOR</b>		PAUL BALFOUR		<b>SAFETY OFFICER</b>		JACK CATES; TAIJA CORSO
<b>5. Resources Assigned this Period</b>						
Strike Team / Task Force / Resource Designator		LWD	Leader	Number Persons	Drop Off PT./Time	Pick Up PT./Time
O-53 TFLD **		08/15	RICH WALLMOW	1	NACHES/0600	NACHES/1800
C-15 CRW2 WEST COAST REFOR HR3 **		08/16	HOMER HERNDEZ	20	NACHES/0600	NACHES/1800
DNR STRIKE TEAM						
O-50 TFLD **		08/14	MATHEW CALDWELL	1	NACHES/0600	NACHES/1800
O-51 TFLD (T) **		08/14	BRIAN WILLIAMS	1	NACHES/0600	NACHES/1800
E-55 ENG5 DNR E5102 **		08/14	IRIS BANKS	4	NACHES/0600	NACHES/1800
E-56 ENG5 DNR E5105 **		08/14	LUKE ACORN	4	NACHES/0600	NACHES/1800
E-57 ENG5 DNR E5201 **		08/14	ISAAC DUGGER	4	NACHES/0600	NACHES/1800
E-58 ENG5 DNR E8262 **		08/14	MARTIN FERRELL	3	NACHES/0600	NACHES/1800
E-59 ENG5 DNR E2406 **		08/14	MATHEW SABIN	3	NACHES/0600	NACHES/1800
E-17 DZR4 BADGER DIRTWORKS **		08/17	KYLE MALTIN	2	NACHES/0600	NACHES/1800
<b>8. Division/Group Communication Summary</b>						
Function	Channel	RX Frequency N/W	RX Tone/NAC	TX Frequency N/W	TX Tone/NAC	Mode
COMMAND	1	170.6875	156.7	166.5750	156.7	A
COMMAND	2	171.7500	156.7	164.6750	156.7	A
TACTICAL	7	166.7750	107.2	166.7750	107.2	A
AIR TO GROUND	12	169.6500		169.6500		A
AIR TO GROUND	13	169.8125		169.8125		A
<b>9. Prepared By (Resource Unit Leader)</b>			<b>Approved By (Planning Section Chief)</b>		<b>Date</b>	<b>Time</b>
JILL JOHNSON			MIKE CHARTER		08/07/2022	2000

**Division/Group Assignment List (ICS 204 WF)**  
**Controlled Unclassified Information//Basic**

<b>1. Incident Name:</b>			<b>3.</b>			
COW CANYON			<b>Branch:</b>	<b>Division/Group</b>  <b>STRUCTURE / IA (COW CANYON)</b>		
<b>2. Operational Period: DAY</b>						
Date/Time From: 08/08/2022 0600 MON		Date/Time To: 08/08/2022 1800 MON				
<b>4. Operations Personnel</b>						
<b>OPERATIONS CHIEF</b>		AARON ROWE KURT RANTA (T);		<b>DIVISION/GROUP SUPERVISOR</b>		RICK WOODALL
<b>AIR OPS BRANCH DIRECTOR</b>		PAUL BALFOUR		<b>SAFETY OFFICER</b>		JACK CATES; TAIJA CORSO
<b>5. Resources Assigned this Period</b>						
Strike Team / Task Force / Resource Designator		LWD	Leader	Number Persons	Drop Off PT./Time	Pick Up PT./Time
<b>6. Control Operations/Work Assignments:</b>						
<p>TASK: Identify and assess structures. Develop structure protection plan for structures in the vicinity of the Cow Canyon fire perimeter.</p> <p>PURPOSE: Develop plan to protect structures from Cow Canyon fire.</p> <p>END STATE: Structure protection plan is completed and implemented as necessary.</p>						
<b>7. Special Instructions:</b>						
<p>** Resource will be used for IA as needed.</p> <p>Special Instructions: Resources will respond and be prioritized by the Division Supervisor based on fire report and location. Division Supervisor may request additional resources to respond based on location and work the resource is engaged in. Fire size up and information will be ran thru Communications on the closest repeater to the incident</p>						
<b>8. Division/Group Communication Summary</b>						
Function	Channel	RX Frequency N/W	RX Tone/NAC	TX Frequency N/W	TX Tone/NAC	Mode
COMMAND	1	170.6875	156.7	166.5750	156.7	A
COMMAND	2	171.7500	156.7	164.6750	156.7	A
TACTICAL	7	166.7750	107.2	166.7750	107.2	A
AIR TO GROUND	12	169.6500		169.6500		A
AIR TO GROUND	13	169.8125		169.8125		A
<b>9. Prepared By (Resource Unit Leader)</b>			<b>Approved By (Planning Section Chief)</b>		<b>Date</b>	<b>Time</b>
JILL JOHNSON			MIKE CHARTER		08/07/2022	2000



AIR OPERATIONS SUMMARY

PREPARED BY: Paul Balfour

PREPARED DATE/TIME: August 7, 2022 1800hrs

INCIDENT NAME VANTAGE HIGHWAY	2. OPERATIONAL PERIOD: Date: 8/8/2022      Helibase Start Time: 0830 End Time: 2030      Sunrise: 0550 Sunset: 2024 (Times valid for Ellensburg)
----------------------------------	--

3. REMARKS (Safety Notes, Hazards, Air Operations Special Equipment, etc.): General Aviation, See & Avoid  Bucket work, Retardant drops: ensure area is clear of ground personnel before dropping; watch for wires; be aware of potential for turbulence at ridge tops, saddles, canyons, etc *** BE AWARE OF FATIGUE, TAKE LONGER BREAKS WHEN FLYING IN SMOKEY CONDITIONS. *** Report all TFR intrusions to Air Operations, Air Support or Helibase as soon as possible.	4. MEDEVAC A/C: Contact CWICC 509-884-3473 N125CL Mt Rainer SH	5. TFR #2/5152 118.6500 (A74)
--	---	----------------------------------

6. PERSONNEL LWD	Phone	7. FREQUENCIES	AM	FM	8. FIXED-WING	# Avail / Type/ Make-Model / FAA N# / Base(s)
AOBD: Paul Balfour O-30.43	509-993-8739	AIR/AIR Primary (A-10)	118.6500		Fixed Wing/Buckets	DIVS order thru ATGS if up, or Communications
ASGS: Tim Lyda O- 30.44	541-761-2676	AIR/AIR Secondary (A-11)	127.1500			
HEBM:		AIR/GROUND Primary (A-12)		169.2000	ATGS Aircraft	Will use available ATGS throughout the operational period until TEAM ATGS is filled  LATs Order through Air Attack/AOBD Or CWICC
HEMG:		AIR/GROUND (A-13)		167.9500		
ATGS:		DNR-AIR/GROUND IA		159.270 T-103.5		
ATGS:		AIR/Ground			NOTES:	
CWICC:	509-884-3473	UNICOM				
		DECK				
						email costs to timlyda22@gmail.com

9. HELICOPTERS

FAA N#	TY	MAKE/MODEL	BASE	START	AVAIL	REMARKS	FAA N#	TY	MAKE/MODEL	BASE	START	AVAIL	REMARKS

AIR OPERATIONS SUMMARY

PREPARED BY: Paul Balfour

PREPARED DATE/TIME: August 7, 2022 1800hrs

<b>INCIDENT NAME</b> COW CANYON	<b>2. OPERATIONAL PERIOD:</b> Date: 8/8/2022      Helibase Start Time: 0830 End Time: 2030      Sunrise: 0550 Sunset: 2024 (Times valid for Ellensberg)
------------------------------------	---

<b>3. REMARKS (Safety Notes, Hazards, Air Operations Special Equipment, etc.):</b> General Aviation, See & Avoid  Bucket work, Retardant drops: ensure area is clear of ground personnel before dropping; watch for wires; be aware of potential for turbulence at ridge tops, saddles, canyons, etc *** BE AWARE OF FATIGUE, TAKE LONGER BREAKS WHEN FLYING IN SMOKEY CONDITIONS. *** Report all TFR intrusions to Air Operations, Air Support or Helibase as soon as possible.	<b>4. MEDEVAC A/C:</b> Contact CWICC 509-884-3473 N125CL Mt Rainer SH	<b>5. TFR #2/5754</b> 118.7250 (A50)
---	--	---

6. PERSONNEL LWD	Phone	7. FREQUENCIES	AM	FM	8. FIXED-WING	# Avail / Type/ Make-Model / FAA N# / Base(s)
AOBD: Paul Balfour O-30.43	509-993-8739	AIR/AIR Primary (A-9)	118.7250		Fixed Wing/Buckets	DIVS order thru ATGS if up, or Communications
ASGS: Tim Lyda O- 30.44	541-761-2676	AIR/AIR Secondary (A-10)	125.1250			
HEBM:		AIR/GROUND Primary (A-11)		169.6500	ATGS Aircraft	Will use available ATGS throughout the operational period until TEAM ATGS is filled  LATs Order through Air Attack/AOBD Or CWICC
HEMG: Joe Thorpe	509-899-1847	AIR/GROUND (A-12)		169.8125		
ATGS:		DNR-AIR/GROUND IA		159.270 T-103.5		
ATGS:		AIR/Ground			NOTES:	
CWICC:	509-884-3473	UNICOM				
		DECK				
						email costs to timlyda22@gmail.com

9. HELICOPTERS

FAA N#	TY	MAKE/MODEL	BASE	START	AVAIL	REMARKS	FAA N#	TY	MAKE/MODEL	BASE	START	AVAIL	REMARKS
H-117DR	2	Bell 205	YAK	0830	0900	Type 2 w/Bucket							

# INCIDENT RADIO COMMUNICATIONS PLAN (ICS 205)

Controlled Unclassified Information//Basic

<b>1. Incident Name:</b>	<b>2. Date/Time Prepared:</b>	<b>3. Operational Period:</b> 0600-1800	
VANTAGE HIGHWAY / COW CANYON	Date: 08/07/2022 Time: 1125	Date/Time From: 08/08/2022 0600 MON	Date/Time To: 08/08/2022 1800 MON

**4. Basic Radio Channel Use:**

Zone Group	Ch #	Function	Channel Name/Trunked Radio System Talkgroup	Assignment	RX Freq	RX Tone/NAC	TX Freq	TX Tone/NAC	Mode (A,D, or M)	Remarks
	1	COMMAND	CMD 1	COW CANYON	170.6875	156.7	166.5750	156.7	A	LOCATION CLEMAN MTN
	2	COMMAND	CMD 2	COW CANYON	171.7500	156.7	164.6750	156.7	A	LOCATION UMPTANUM RIDGE
	3	COMMAND	CMD 3	VANTAGE HWY	168.4750	156.7	165.4000	156.7	A	LOCATION DP 130
	4	TACTICAL	TAC 4	DIV C	168.0500	107.2	168.0500	107.2	A	
	5	TACTICAL	TAC 5	DIV L	168.6000	107.2	168.6000	107.2	A	
	6	TACTICAL	TAC 6	DIV W AND DIV E/W	166.7250	107.2	166.7250	107.2	A	
	7	TACTICAL	TAC 7	DIV A/Z; STRUCTURE	166.7750	107.2	166.7750	107.2	A	
	8	COMMAND	WHISKEY	ALL DIVS VANTAGE HWY	151.4000	103.5	168.2500	107.2	A	ALL DIVS ON VANTAGE-USE FOR BACKUP IF CMD3 INOP
	9	COMMAND	DNR CLEM	IA ONLY	159.3450	114.8	151.4675	114.8	A	
	10	TACTICAL	DNR COM	IA ONLY	151.4150	103.5	151.4150	103.5	A	
	11	AIR TO GROUND	DNR A/G 1	IA ONLY	159.2700	103.5	159.2700	103.5	A	
	12	AIR TO GROUND	A/G PRI 1	COW CANYON	169.6500		169.6500		A	
	13	AIR TO GROUND	A/G SEC 1	COW CANYON	169.8125		169.8125		A	
	14	AIR TO GROUND	A/G PRI 2	VANTAGE HWY	169.2000		169.2000		A	
	15	AIR TO GROUND	A/G SEC 2	VANTAGE HWY	167.9500		167.9500		A	
	16	AIR GUARD	AIRGUARD	ALL DIVISIONS	168.6250		168.6250	110.9	A	

**5. Special Instructions:**

<b>6. Prepared By</b> (Communications Unit Leader)	Name: MISSY PARKER	Signature:
ICS 205	IAP Page	Date/Time: 08/07/2022 1125

# DMOB LIST FOR MONDAY 8-8-22

## COW CANYON US-WA-SES-000277

### CREWS

C-4 0700 (CRW2) PATRICK ENVIRONMENTAL PR16

### EQUIPMENT

E-6 0615 (WTS2) WTS2 - KING HYDROSEEDING, INC. -  
E-10 0630 (DZR2) DZR2 - J & S LOGGING CO INC -  
E-8 0700 (DZR3) DZR3 ANDREW DUKE  
E-16 0715 (AMB2) AMB2 - BALLARD  
E-18 0730 (DZR2) DZR2 TIMBERED RANGELAND  
E-5 1300 (WTS2) WTS2 - KING HYDROSEEDING, INC. -

### OVERHEAD

O-25 0630 (EMTF) HOOVER, DALE (**VANTAGE BASE CAMP**)  
O-2.19 0800 (SCKN) VOLK, CHRIS D  
O-4 1300 (HEQB) BEESLEY, KODY ANDREW  
O-7 1315 (TFLD) PHILLIPS, GENE DONALD  
O-11 1330 (HEQB) VAN PELT, DYLAN JAMES  
O-18 1345 (TFLD) FISHER, MATTHEW RUSSELL

### Cow Canyon Fire DMOB Procedures

1. Have all CTRs completed before arrival
2. Arrive at designated time to process paperwork and turn in any applicable equipment and documentation
3. Contact DMOB at 208-570-9358 to finalize process

Cow Canyon DEMOB is located at Naches Middle School  
32 Shafer Avenue in Naches.



Vantage Highway Finance Map



Cow Canyon Fire Finance Map



# Public Information

**PHOTOS:** Your fireline photos help us build understanding with the public. We are looking for any pictures of the fire line, mop-up work, and **fire resources working on the fire line in their PPE.**

**Please send your photos to the right email address so we will know what fire you are working!**

You can send photos to:

**Cow Canyon Fire:** [2022.cowcanyon@firenet.gov](mailto:2022.cowcanyon@firenet.gov)

**Vantage Hwy Fire:** [2022.vantagehighway@firenet.gov](mailto:2022.vantagehighway@firenet.gov)

**Text for pictures (please state which fire): 541-200-4485**

As always, make sure you're wearing all your PPE and conveying a professional, caring, and respectful attitude toward the homes and land in this community. Thanks for helping us out!

**QUESTIONS FROM THE PUBLIC:** If community members have questions that you do not feel equipped to answer professionally, please give them our fire information line: 509-557-0063.

**LOST AND FOUND:** We have a lost and found in the Information shop in the ICP. If you have lost something, please stop by and see if it has been turned in. If you find something left around ICP or camp, you can turn it in to us.

# TRAINING MESSAGE

Educating trainees on their responsibilities.

## Topic: Position Taskbook

- Did you know a Position Taskbook (PTB) is valid for three years from the date of initiation? Look at that date on the cover page of your PTB.
- Did you also know that the Initiation Date can be reset? Upon documentation of the first evaluator (the first person to put ink in your PTB), the 3-year time limit is reset from that new date. This is a one-time occurrence.
- You can have several PTBs open, however only three can be open in any one functional area (Operations, Finance, Logistics, etc.) at a time.
- Be aware, if your PTB expires, a new one will need to be initiated.

“Train with different trainers and build your own style.”

If you have any questions or comments, please  
text/call: 541-727-1022. Email: [henry\\_falcon@firenet.gov](mailto:henry_falcon@firenet.gov)

\*\*\*\*\*

Trainees: please register with the Training Specialist  
using the QR code below. If you are unable to use the QR Code,  
you can also register by calling or texting to the number listed above.

I will be working remotely on this assignment



OR <https://forms.office.com/g/X3S0XWuq4W>

\*\*\*\*\*

Hank Falcon / NW team 12



# Human Resource Message

Contact: HRSP Susie Manezes, 208-739-0255



## Vantage Highway and Cow Canyon Fires - August 8, 2022

**Communication:** Because of the complexity of our fire assignments, what and how we communicate is critical to the success of our day-to-day operations. We talk to a lot of people every day so to avoid confusion and misunderstandings and sometimes hurt feelings, here are some communication tips that may be helpful:

**Make sure communication is clear, concise, direct, and timely.**

- **Listen – Practice active listening. Pay close attention to what others are saying and clarify ambiguities by rephrasing their questions for greater understanding.**
- **Conciseness – Get straight to the point. Do not use filler words.**
- **Body language – Use eye contact, utilize appropriate hand gestures, and watch the tone of your voice.**
- **Confidence – Maintain a relaxed body stance, maintain eye contact, and avoid trying to sound aggressive or demeaning.**
- **Open-mindedness – Respect the opinions of others.**
- **Feedback – Completes the communication and assess if the message is understood as intended and allows any confusion to be corrected.**

**We are here to support you so let us know if our communication is not clear, concise, direct, or timely.**



**“Good communication is the bridge between confusion and clarity.”**

**-Nat Turner**

**Work safely and have a productive day!**



**TO: ALL PERSONNEL**

**FROM: DEPARTMENT OF NATURAL RESOURCES  
DEPARTMENT OF CORRECTIONS**

**WILDFIRE**

**SUBJECT: WORKING AROUND OFFENDERS/DNR  
KITCHENS**

- **NO PERSON SHALL BE ALLOWED TO CARRY FIREARMS IN THE AREA WHERE OFFENDERS ARE WORKING.** ( It is acceptable to secure weapons in vehicles while entering into the working vicinity of offenders)
- **DO NOT GIVE OR TAKE ANYTHING FROM AN OFFENDER.** (Offenders are identified by red ball caps or red hard hats.)
- **DO NOT TAKE PHOTOS OR INTERVIEW OFFENDERS WITHOUT APPROVAL FROM DNR INMATE LIAISON.** (Signed consent forms required.)
- **DO NOT DO ANY FAVORS FOR OFFENDERS.** (Examples passing on a message, giving tobacco, asking for change, mailing a letter, using a phone, etc.)
- **PROMPTLY REPORT ANY SUSPICIOUS ACT TO THE SUPERVISOR, DOC STAFF OR INMATE LIAISON.** (The most innocent act/favor can have consequences that could negatively affect an offender for years.)
- **USE OF TABACCO PRODUCTS IN KITCHEN AREA IS NOT ALLOWED.** (Offenders are not allowed to use any tobacco products.)
- **HARRASSMENT OF ANY KIND WILL NOT BE TOLDERATED.** (All harassment allegations involving offenders will be reported to Human Resources and the involved agencies representatives.)
- **OFFENDERS ON DNR CREWS ARE RATED AS MINIMUM CUSTODY.**
- **TREAT OFFENDERS WITH RESPECT, BUT PRACTICE THE CORRECTIONAL DISTANCE. DON'T GET PERSONAL.** (Offenders generally feel good with being part of the fire suppression effort, treat them with the same respect and dignity as other fire fighters but DON'T GET PERSONAL.
- **OFFENDERS ARE TRAINED IN WORK ETHICS AND JOB SKILLS.** (Offenders are trained and experienced in their job assignments and work ethic. They are held accountable for job performance and behavior.)

**ACKNOWLEDGE CREWS FOR A JOB WELL DONE, OFFENDERS DO GOOD WORK AND APPRECIATE THE RECOGNITION.** Offenders need good professional role models as part of their rehabilitation process, consider their presence and set good examples by the context of your conversations and choice of language used.



# Logistics Message

## Ground Support 0500-2200

Western Village at Rodeo Grounds (Ellensburg)

## Supply 0500-2200

Western Village at Rodeo Grounds (Ellensburg)

## Medical 0600-2200

Western Village at Rodeo Grounds (Ellensburg)

## Communications 24/7

Adjacent to Armory at Kittitas Co Fairgrounds - in DNR Command Trailer

## Showers 0400-1000 and 1600-2130

Near Gazebo Kittitas Co Fairgrounds (Ellensburg)

## Kitchen

Breakfast 0500-0900

Dinner 1800-2100

Kittitas Secondary School



# **Cow Canyon Fire**

## **MEALS**

Breakfast: 0530 - 930

Lunch: Handed out at breakfast

Dinner: 1730 – 2130

## **SHOWERS**

Shower Trailer (behind school)

0500 - 1200 and 1400 - 2200



Supply Cache  
Ground Support Parking  
Road Closed

Water

Handwash Station

Medical Support Ground

Check-In Finance PIO

Comm's Trailer

Plans / Ops / Safety

Gazebo All Meals

Shower Trailer

Incident Command Post Map  
Kittitas Event Center





Parking

Camping  
(GRASS ONLY)

**NO**  
Parking



Showers

Day  
Sleeping

Camping  
(GRASS ONLY)

Meals

Plans/Ops/Safety  
Finance/Logs  
Medical



Camping  
(GRASS ONLY)

Water  
& Ice

Garbage/  
Dumpster

Parking

Cow Canyon Camp Map  
Naches Middle School

**Cow Canyon Camp Map  
Naches High School**

**Camping**

**Parking**

**Parking**



**Road  
Closed  
(GATE)**

**4th Street**

**Naches  
Ave**





## Finance Message

[2022.vantagehighway.finance@firenet.gov](mailto:2022.vantagehighway.finance@firenet.gov)

(509) 423-6011 FSC Christina

[2022.cowcanyon.finance@firenet.gov](mailto:2022.cowcanyon.finance@firenet.gov)

(509) 778-8080 FSC Slita Bradley

*Finance for the Vantage Highway fire is located at the entrance of the Kittitas County Fairgrounds on left. Finance for Cow Canyon is located the Naches Middle School.*

*Please make sure to turn in CTR/Shift tickets daily, so we can control the cost of the fire and help you get paid.*

*Please make sure to put the correct Resource Order # and fire # on your CTR/Shift ticket. Please help us by stating if you are Vantage resource or Cow Canyon.*

***\*\*Equipment Resources with transport retained must have transport operators name in the remarks of the shift ticket.***

*If you have questions, please contact finance.*

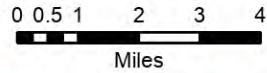
*Equipment – 208-890-4869 Todd*

*TIME Unit – 509-823-6642 Steve*

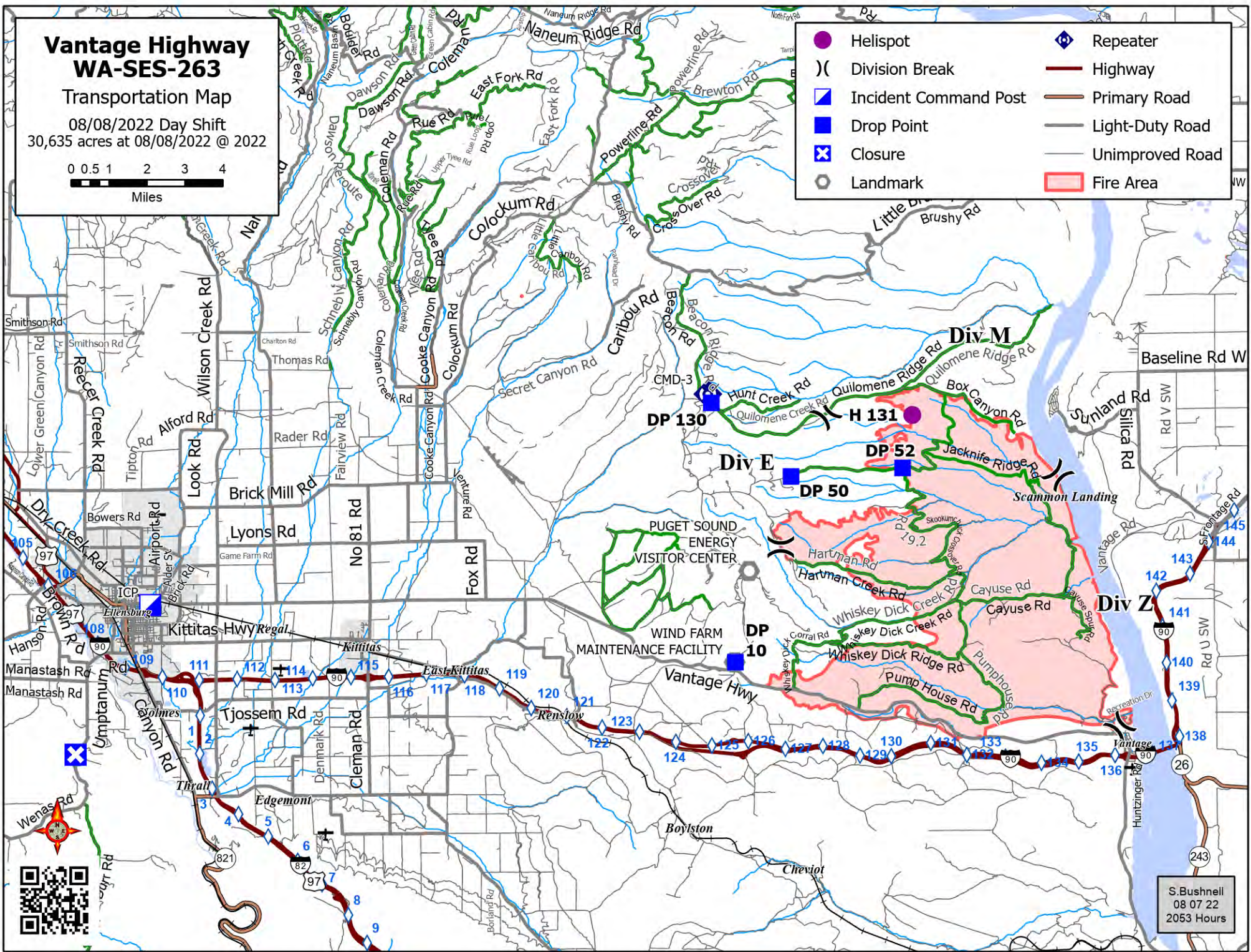
# Vantage Highway WA-SES-263

Transportation Map

08/08/2022 Day Shift  
30,635 acres at 08/08/2022 @ 2022



	Helispot		Repeater
	Division Break		Highway
	Incident Command Post		Primary Road
	Drop Point		Light-Duty Road
	Closure		Unimproved Road
	Landmark		Fire Area

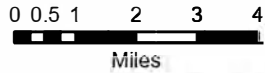


S. Bushnell  
08 07 22  
2053 Hours

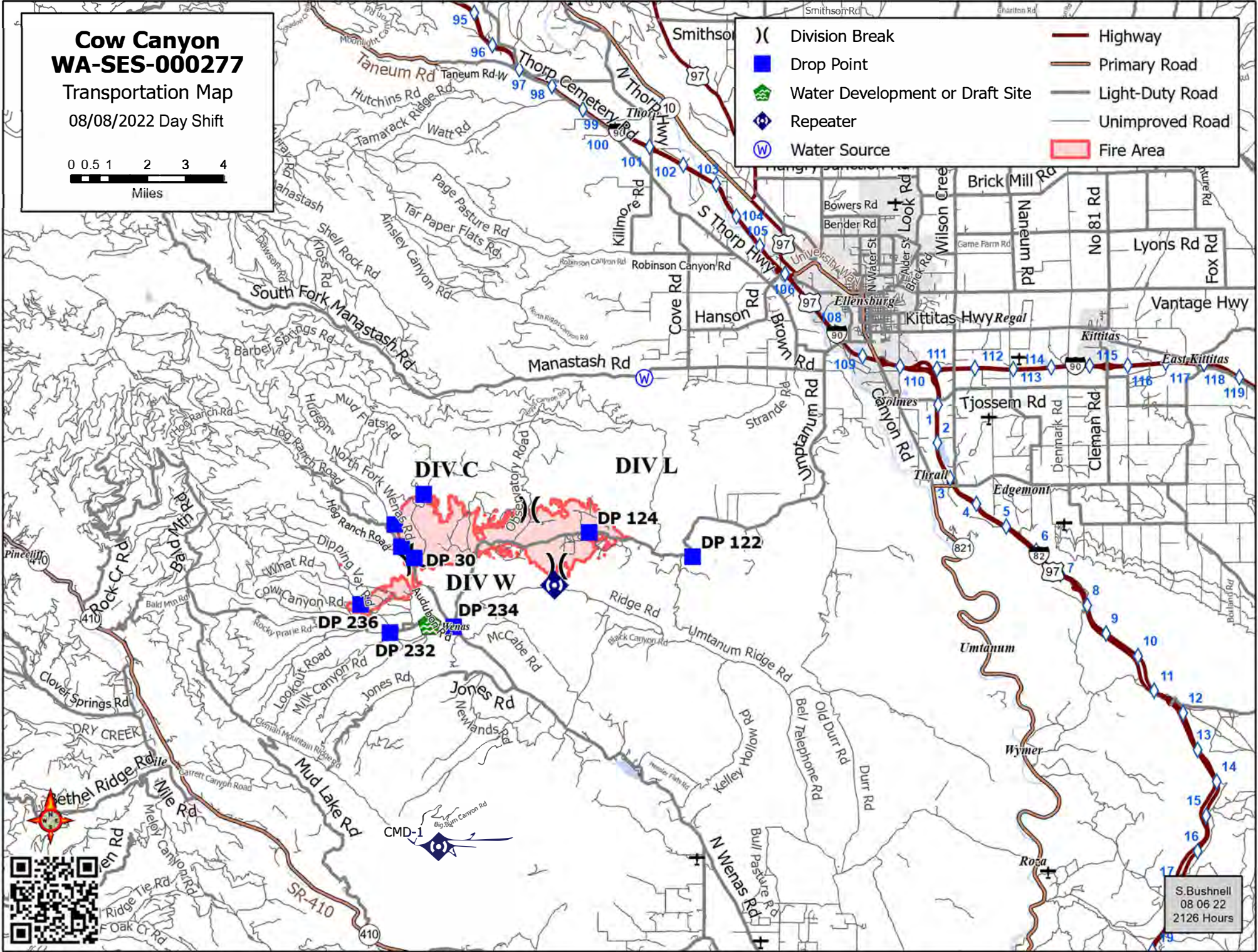
# Cow Canyon WA-SES-000277

Transportation Map

08/08/2022 Day Shift



- ( ) Division Break
- Drop Point
- 🌿 Water Development or Draft Site
- 📶 Repeater
- Ⓜ Water Source
- Highway
- Primary Road
- Light-Duty Road
- Unimproved Road
- 🔴 Fire Area



S. Bushnell  
08 06 22  
2126 Hours



# Vantage Highway WA-SES-263 IAP Map

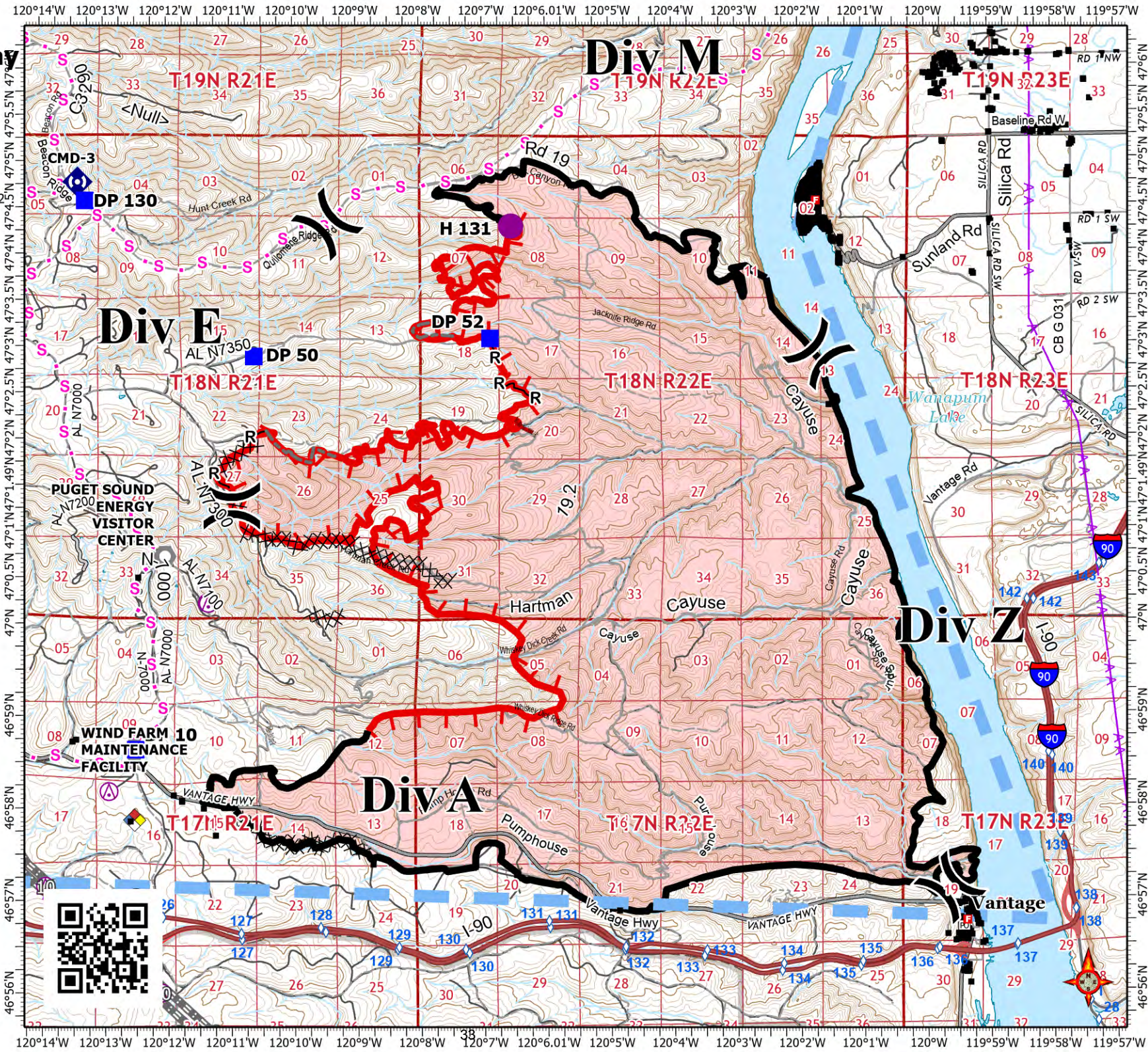
08/08/2022 Day Shift  
30,635 acres at 08/08/2022 @ 2022

- Helispot
- X Division Break
- Drop Point
- Landmark
- ◊ Repeater
- Fire Station
- Structures
- Contaminated Site
- ⊗ Aerial Hazard
- XX Completed Dozer Line
- R— Completed Road as Line
- S Planned Secondary Line
- Other
- ▭ Temporary Flight Restriction
- ▭ Contained
- ▭ Uncontained Fire Edge
- ▭ BPA Transmission Lines
- A— Utility Line
- ▭ Expressway
- ▭ Local Connector
- ▭ Local Road
- ▭ Ramp
- ▭ 4WD
- ▭ Trail
- ▭ State or Territory
- ▭ County or Equivalent
- ▭ Department of Defense
- ▭ Wildfire Daily Fire Perimeter
- ▭ IR Heat Perimeter
- ▭ Bureau of Land Management (BLM)
- ▭ Bureau of Reclamation (BOR)
- ▭ Department of Defense (DOD)
- ▭ State
- ▭ Private
- ▭ Undetermined



S. Bushnell  
08 07 22  
2053 Hours

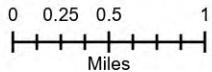
Acres from IR and SAT  
Datum: North American 1983 HARN



# Cow Canyon WA-SES-000277 IAP Map

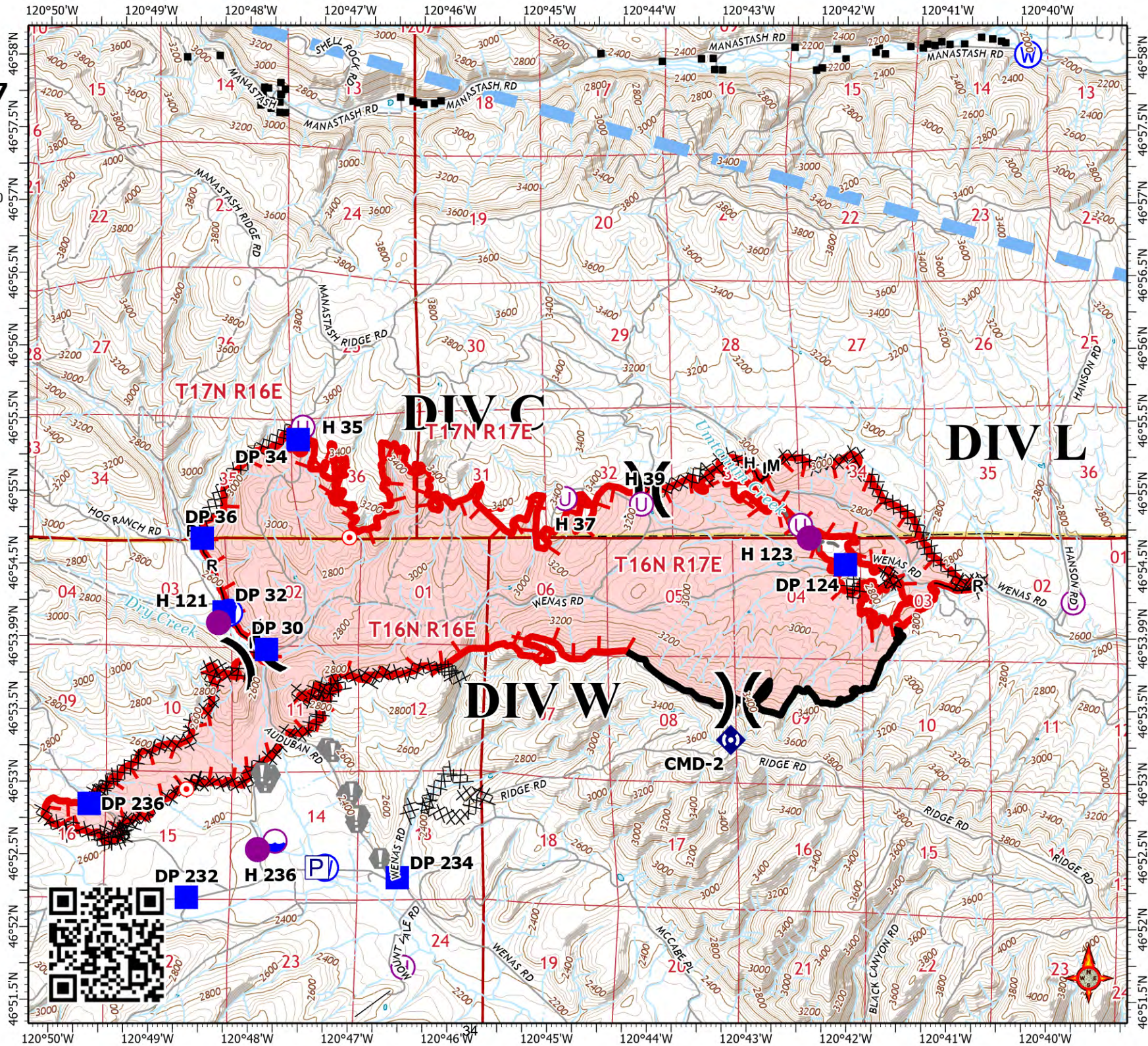
08/08/2022 Day Shift  
5832 acres at 08/07/2022 @ 2050

- Pump
- Dip Site
- Helispot
- Helibase
- Unimproved Landing Area
- Division Break
- Drop Point
- Hot Spot - Spot Fire
- Value at Risk
- Water Development or Draft Site
- Repeater
- Water Source
- Structures
- Campground
- Campsite
- Forest Service Facility
- Forest/Region HeadQtrs Office
- Lookout - Permanent
- Picnic Area
- Ranger District Office
- Roadside Park
- Trailhead
- Winter Recreation Area
- Completed Dozer Line
- Completed Hand Line
- Completed Mixed Construction Line
- Completed Road as Line
- Other
- Temporary Flight Restriction
- Contained
- Uncontained Fire Edge
- Gasline Route
- Local Road
- 4WD
- State or Territory
- County or Equivalent
- Fire Area
- State
- Private



M. Tonkel  
08 07 22  
2105 Hours

Acres from IR and Sketch  
Datum: North American 1983 HARN



## Incident Maps

For incident maps scan the QR code on the cover of the IAP to open the 'Current Maps' folder. There are also general area transportation maps named large\_color\_wenas.pdf and large\_color\_whiskeydick\_quilomene.pdf.

### How to Download and Open Maps in Avenza

#### Method 1: From a browser

1. Tap on the desired map link and wait for the preview.  
*\* If it fails to load, use method 2 instead*
2. Tap the 'send to' icon (square with up arrow)
3. Choose the Avenza app

#### Method 2: From Avenza direct

1. Tap and hold on the desired map link, then choose 'copy' to copy the direct URL to the map
2. Launch the Avenza app
3. When not in any map... Tap the + (plus) icon at the top of the screen
4. Choose the load from URL option (last choice)
5. Paste the direct URL to the map
6. Tap 'Done' ; the map will begin downloading

### How to Send Map Updates to the Situation Unit

Send map updates by email to [2022.cowcanyon.situation@firenet.gov](mailto:2022.cowcanyon.situation@firenet.gov) or [2022.vantagehighway.situation@firenet.gov](mailto:2022.vantagehighway.situation@firenet.gov) or text/call the Situation Unit at 360-584-3373. Make sure to include your name, position and explanation of the update you send.

1. Open the map in Avenza.
2. Click the pin with three lines near the lower-right corner.
3. *iPhone:* In the lower right, click the square with up arrow. From the pop-up menu, choose Export to Others.  
*Android:* In the lower right, click the circle with three lines. Click the pop-up circle with up arrow.
4. Set these options:
  - a. Filename – leave alone
  - b. Export Format – choose SHP, GPX or KML
  - c. Data – all features
  - d. Image size – no image
5. Click the Export button in the upper-right corner.
6. When the export is ready, choose your Mail application.
7. Send the email to the addresses listed above.
8. Your email needs to include an explanation of the data you are sending.

If you don't have Avenza please draw corrections and new features on your paper map, take a picture of it and email or text it to the email or phone number listed above.

Thanks for your help!



## **COVID-19 Mitigations for Cow Canyon/Vantage Road Fires**

- Masks are not required indoors unless working in a county with a HIGH COVID-19 community level. Currently, Kittitas County community level is LOW and Yakima County is MEDIUM (masking indoors is optional).
- Conduct daily verbal screening checks within crews, report any COVID-like symptoms to your direct supervisor. Supervisors should report any positive symptoms to the Medical Unit for next steps.
- Observe social distancing standards while waiting in line for food and limit contact with others outside of your crew in the food service line. If possible, send crew representatives to pick up meals.
- Practice good personal hygiene, wash hands frequently and disinfect high-traffic areas on a regular basis.
- Limit close contact between firefighters and the public as much as possible to prevent exposure and spread.





# EMERGENCY PLAN INCIDENT WITHIN AN INCIDENT

## ON SCENE INCIDENT COMMANDER

In the event of an accident or medical incident of any size, your primary responsibility is to ENSURE that the victim(s) receive prompt and effective Triage, Treatment, Extrication and Transport.

- **ENSURE THE MEDICAL INCIDENT REPORT IN THE INCIDENT ACTION PLAN IS BEING USED AND FOLLOWED- \*IF DETERMINED TO BE A GREEN, DO NOT DECLARE EMERGENCY TRAFFIC AND ONLY COMPLETE LINE 1-4 ON MIR\*.**
- Conduct size-up of the incident nature of accident, number type of resources involved, latitude and longitude location (DD°MMM.MM format): notify incident communications center and supervisor, request assistance as needed.
- Order and coordinate medical and support response to the accident.
- Evaluate special needs (law enforcement, haz mat, etc.).
- Clear the command frequency if medical emergency, coordinate with incident communications and air attack for air medical transportation needs.
- Preserve and photograph the scene for accident investigation.
- Remain aware of surroundings and the status of the main incident (delegate personnel to monitor the main fire) to ensure safety of medical treatment personnel.
- Until relieved, supervise and manage all personnel involved at the incident scene.

# MEDICAL PLAN (ICS 206 WF)

<b>Incident/Project Name</b>		<b>1. Operational Period</b>					
<b>Vantage Highway</b>		<b>August 8<sup>th</sup>, 2022 0600-1800</b>					
<b>2. Ambulance Services</b>							
<b>Name</b>	<b>Complete Address</b>	<b>Phone</b>		<b>Advanced Life Support (ALS)</b>			
				Yes	No		
Kittitas Valley Fire & Rescue	400 E. Mt View. Ave. Ellensburg, WA 98926	911 (509) 933-7231		X			
<b>3. Air Ambulance Services</b>							
<b>Name</b>	<b>Phone</b>	<b>Location</b>					
Life Flight Network	800-232-0911	Moses Lake					
Airlift Northwest	800-426-2430 or 911	Wenatchee					
<b>4. Hospitals</b>							
<b>Name</b> <b>Complete Address</b>	<b>Coordinate Standard</b> Degrees Decimal Minutes DD° MM.MMM' N - Lat DD° MM.MMM' W - Long	<b>Travel Time</b> From Vanatge		<b>Phone</b>	<b>Helipad</b>		<b>Level</b> <b>of Care</b> <b>Facility</b>
		Air	Gnd		Yes	No	
Kittitas Valley Health 603 S Chestnut Ellensburg, WA 98926	Lat: 46° 59' 13.92" N	13 min	30 min	509-962-9841	X		Level 4 Trauma
	Long: 120° 32' 11.976" W						
Samaritan Healthcare 801 E Wheeler rd. Moses Lake, WA 98837	Lat: 47° 7' 43.212" N	22 Min	45 min	509-826-1760	X		Level 3 Trauma
	Long: 119° 15' 54.972" W						
Harborview Medical 325 9 <sup>th</sup> Ave Seattle, WA 98104	Lat: 47°36.1897' N	60 min	2 Hr	541-222-6929	X		Level 1 Trauma Burn Center
	Long: 122°19.4759' W						
<b>5. Division   Branch   Group</b>		<b>Capability</b>		<b>Personnel</b>			
<b>Div A/Z</b>		AMR Ambulance E-32					
<b>Div E/M</b>		Drew Perry O-25			Michael Schmidtgall O-27		
<b>Night</b>		911					
<b>6. Prepared By (Medical Unit Leader)</b>			<b>7. Date/Time</b>		<b>8. Reviewed By (Safety Officer)</b>		<b>9. Date/Time</b>
Lee Venning			08/07/2022 1800		Jack Cates <i>Jack Cates</i>		08/07/2022 1800

# MEDICAL PLAN (ICS 206 WF)

Incident/Project Name		1. Operational Period						
<b>Cow Canyon Fire</b>		<b>August 8<sup>th</sup>, 2022 0600-1800</b>						
2. Ambulance Services								
Name	Complete Address	Phone		Advanced Life Support (ALS)				
		Yes	No					
Kittitas Valley Fire & Rescue (North)	400 E. Mt View. Ave. Ellensburg, WA 98926	911  (509) 933-7231		X				
Yakima AMR (South)	229 South 2nd Avenue Yakima, Washington 98902	911  (509) 453-6561		X				
3. Air Ambulance Services								
Name	Phone	Location						
Life Flight Network	800-232-0911	Moses Lake						
Airlift Northwest	800-426-2430 or 911	Wenatchee						
4. Hospitals								
Name Complete Address	Coordinate Standard Degrees Decimal Minutes DD° MM.MMM' N - Lat DD° MM.MMM' W - Long		Travel Time From Vanatge		Phone	Helipad		Level of Care Facility
	Lat:	Long:	Air	Gnd		Yes	No	
Yakima Valley Memorial 2811 Tieton Dr Yakima, WA 98902	46° 35' 37.68" N	120° 32' 51.972" W	13 min	30 min	509-575-8100	X		Level 3 Trauma
Kittitas Valley Health 603 S Chestnut Ellensburg, WA 98926	46° 59' 13.92" N	120° 32' 11.976" W	22 Min	45 min	509-962-9841	X		Level 4 Trauma
Harborview Medical 325 9 <sup>th</sup> Ave Seattle, WA 98104	47° 36.1897' N	122° 19.4759' W	60 min	2 Hr	541-222-6929	X		Level 1 Trauma Burn Center
5. Division   Branch   Group	Capability			Personnel				
<b>Div C</b>	Beyond The Edge (BTE) REM O-31							
<b>Div L</b>	Protection 1 Ambulance E-30			Medic Wunsch O-44				
<b>Div W</b>	Clark-Cowlitz Ambulance E-29			Medic Wilson O-54				
<b>Night</b>	911							
6. Prepared By (Medical Unit Leader)	7. Date/Time	8. Reviewed By (Safety Officer)			9. Date/Time			
Lee Venning	08/07/2022 1800	Jack Cates <i>Jack Cates</i>			08/07/2022 1800			



# MEDICAL PLAN (ICS 206 WF)

Controlled Unclassified Information//Basic

## Medical Incident Report

**FOR A NON-EMERGENCY INCIDENT, WORK THROUGH CHAIN OF COMMAND TO REPORT AND TRANSPORT INJURED PERSONNEL AS NECESSARY.**

**FOR A MEDICAL EMERGENCY: IDENTIFY ON SCENE INCIDENT COMMANDER BY NAME AND POSITION AND ANNOUNCE "MEDICAL EMERGENCY" TO INITIATE RESPONSE FROM IMT COMMUNICATIONS/DISPATCH.**

Use the following items to communicate situation to communications/dispatch.

1. CONTACT COMMUNICATIONS / DISPATCH (**Verify correct frequency prior to starting report**)

*Ex: "Communications, Div. Alpha. Stand-by for Emergency Traffic."*

2. INCIDENT STATUS: *Provide incident summary (including number of patients) and command structure.*

*Ex: "Communications, I have a Red priority patient, unconscious, struck by a falling tree. Requesting air ambulance to Forest Road 1 at (Lat./Long.) This will be the Trout Meadow Medical, IC is TFLD Jones. EMT Smith is providing medical care."*

Severity of Emergency / Transport Priority	<input type="checkbox"/> RED / PRIORITY 1 Life or limb threatening injury or illness. Evacuation need is IMMEDIATE <i>Ex: Unconscious, difficulty breathing, bleeding severely, 2° – 3° burns more than 4 palm sizes, heat stroke, disoriented.</i> <input type="checkbox"/> YELLOW / PRIORITY 2 Serious Injury or illness. Evacuation may be DELAYED if necessary. <i>Ex: Significant trauma, unable to walk, 2° – 3° burns not more than 1-3 palm sizes.</i> <input type="checkbox"/> GREEN / PRIORITY 3 Minor Injury or illness. Non-Emergency transport <i>Ex: Sprains, strains, minor heat-related illness.</i>	
Nature of Injury or Illness & Mechanism of Injury		<i>Brief Summary of Injury or Illness (Ex: Unconscious, Struck by Falling Tree)</i>
Transport Request		<i>Air Ambulance / Short Haul/Hoist Ground Ambulance / Other</i>
Patient Location		<i>Descriptive Location &amp; Lat. / Long. (WGS84)</i>
Incident Name		<i>Geographic Name + "Medical" (Ex: Trout Meadow Medical)</i>
On-Scene Incident Commander		<i>Name of on-scene IC of Incident within an Incident (Ex: TFLD Jones)</i>
Patient Care		<i>Name of Care Provider (Ex: EMT Smith)</i>

3. INITIAL PATIENT ASSESSMENT: *Complete this section for each patient as applicable (start with the most severe patient)*

Patient Assessment: See IRPG page 106

Treatment:

4. TRANSPORT PLAN:

Evacuation Location (if different): *(Descriptive Location (drop point, intersection, etc.) or Lat. / Long.)* Patient's ETA to Evacuation Location:

Helispot / Extraction Site Size and Hazards:

5. ADDITIONAL RESOURCES / EQUIPMENT NEEDS:

*Example: Paramedic/EMT, Crews, Immobilization Devices, AED, Oxygen, Trauma Bag, IV/Fluid(s), Splints, Rope rescue, Wheeled litter, HAZMAT, Extrication*

6. COMMUNICATIONS: Identify State Air/Ground EMS Frequencies and Hospital Contacts as applicable

Function	Channel Name/Number	Receive (RX)	Tone/NAC *	Transmit (TX)	Tone/NAC *
COMMAND					
AIR-TO-GRND					
TACTICAL					

7. CONTINGENCY: **Considerations:** *If primary options fail, what actions can be implemented in conjunction with primary evacuation method? Be thinking ahead.*

8. ADDITIONAL INFORMATION: *Updates/Changes, etc.*

**REMEMBER:** Confirm ETA's of resources ordered. Act according to your level of training. Be Alert. Keep Calm. Think Clearly. Act Decisively.

Controlled Unclassified Information//Basic