

# Incident Action Plan

# VANTAGE HIGHWAY

# COW CANYON



## Vantage Highway

WA-SES-000263  
PN PX8Y (1522)  
221-CBA

## Cow Canyon

WA-SES-000277  
PN PYS3 (1522)  
221-CBB

August 11, 2022  
Operational Period  
0600-1800



SCAN QR for BRIEFING  
OR  
ZOOM PHONE IN  
+1 253 215 8782  
Meeting ID: 814 1105 8157  
Passcode: 226055



DOWNLOAD  
IAP and MAPS




This page intentionally left blank.



## INCIDENT OBJECTIVES (ICS 202)

<b>1. Incident Name:</b>	<b>2. Operational Period: DAY</b>	
VANTAGE HIGHWAY / COW CANYON	Date/Time From: 08/11/2022 0600      THU	Date/Time To: 08/11/2022 1800      THU
<b>3. Objective(s):</b>		
<ul style="list-style-type: none"> <li>• Provide for firefighter and public safety using the Deliberate Risk Analysis process and implement reasonable mitigations for identified hazards.</li> <li>• Minimize impacts to communities, infrastructure, and acres burned on private lands.</li> <li>• Protect tribal, cultural, aquatic and wildlife resources, and sensitive plant sites.</li> <li>• Provide Initial Attack response and assistance for private and public lands within the delegated area.</li> <li>• Maintain and enhance relationships with cooperators, stake holders, landowners, and communities by providing accurate and timely information.</li> <li>• Manage cost commensurate with values at risk and maintain fiscal accountability.</li> <li>• Treat each other with dignity and respect and act in a professional manner while on the fire and in the community.</li> <li>• Ensure COVID-19 best management practices are in place and follow local CDC guidelines.</li> </ul>		
<b>4. Operational Period Command Emphasis:</b>		
Implement firefighting tactics to minimize fire growth with the greatest chance of success and the least amount of risk to firefighter and aviation resources as practical to meet incident objectives.		
<b>General Situational Awareness:</b>		
Fighting fire in light flashy fuels under hot, dry, and windy conditions poses great potential for rapid fire growth. Anticipate changes in fire behavior before it happens and ensure Lookouts, Communications, Escape Routes, and Safety Zones are adequate. Maintain accountability of all assigned resources while engaged on the fire line.		
<b>5. Site Safety Plan Required?</b> Yes <input type="checkbox"/> No <input checked="" type="checkbox"/>		
<b>Approved Site Safety Plan(s) Located</b>		
<b>6. Incident Action Plan</b> (the items checked below are included in this Incident Action Plan):		
<input checked="" type="checkbox"/> ICS 202 <input checked="" type="checkbox"/> ICS 203 <input checked="" type="checkbox"/> ICS 204 <input checked="" type="checkbox"/> ICS 205 <input type="checkbox"/> ICS 205A <input checked="" type="checkbox"/> ICS 206	<input type="checkbox"/> ICS 207 <input type="checkbox"/> ICS 208 <input checked="" type="checkbox"/> ICS 220 <input checked="" type="checkbox"/> Map/Chart <input checked="" type="checkbox"/> Weather Forecast/Tides/Currents	<b>Other Attachments:</b> <input checked="" type="checkbox"/> HUMAN RESOURCE MESSAGE <input checked="" type="checkbox"/> UNIT LOG <input type="checkbox"/> _____ <input type="checkbox"/> _____
<b>7. Prepared by:</b> MARGE HUTCHINSON	<b>Position/Title:</b> PSC2	<b>Signature:</b> <i>Marge Hutchinson</i>
<b>8. Approved by Incident Commander:</b>	<b>Name:</b> JEFF DIMKE	<b>Signature:</b> <i>Jeff Dimke</i>
<b>ICS 202</b>	<b>IAP Page</b>	<b>Date/Time:</b> 08/10/2022/2000

## ORGANIZATION ASSIGNMENT LIST (ICS 203)

<b>1. Incident Name:</b>		<b>2. Operational Period: DAY</b>	
VANTAGE HIGHWAY / COW CANYON		Date/Time From: 08/11/2022 0600 THU	Date/Time To: 08/11/2022 1800 THU
<b>3. Incident Commander(s) and Command Staff:</b>			
IC/UC	JEFF DIMKE	CHIEF	KEVIN HAUGHTON PAUL FOOTEN (T)
DEPUTY	BOBBY SHINDELAR	SUPPLY UNIT	JOHN KAUPA
SAFETY OFFICER	JACK CATES; TAIJA CORSO	FACILITIES UNIT	CALVIN OHLSON-KIEHN WHIT SPENCER (T)
INFORMATION OFFICER	JOEL BRUMM LIV STECKER (T)	GROUND SUPPORT UNIT	DAVE HARSH
LIAISON OFFICER	SCOTT CRAWFORD JEFF SEVIGNEY (T)	COMMUNICATIONS UNIT	MISSY PARKER
HUMAN RESOURCE SPECIALIST	SUSIE MANEZES	MEDICAL UNIT	EAMONN RYAN LEE VENNING ;JOSH ALEXANDER (T)
		FOOD UNIT	ALEX LILLA
		SECURITY UNIT	
<b>4. Agency/Organization Representative(s):</b>			
<b>Agency/Organization</b>	<b>Name</b>		
BLM	CHRIS SHERIDAN	<b>7. Operations Section:</b>	
DNR	TODD WELKER	OPS SECTION CHIEF	AARON ROWE; TONY ENGEL KURT RANTA (T); CODY ACORD (T)
WDFW - WHICKEY DICK/QUILOMENE	HANNAH BATES	PLANNING OPS	JEFF BOUSCHOR JEROMY WILSON (T)
WDFW - COLOCKUM	PETE LOPUSHINSKI	STRATEGIC OPS	TONY ENGEL
WDFW - WENAS	MELINDA HUGHES		
KVFR	JOHN SINCLAIR	DIVISION/GROUP	A/Z (VANTAGE HWY) BOB HINDS
KITTITAS CO EMERG MGMT	DARREN HIGASHIYAMA	DIVISION/GROUP	E/M (VANTAGE HWY) SAM STEINSHOUER
YAKIMA CO EMERG MGMT	TONY MILLER	DIVISION/GROUP	C (COW CANYON) MATT KENNEDY CARSON ZEPP (T)
BLM READ (VANTAGE HWY)	ERIC ELLIS CLARINDA WILSON	DIVISION/GROUP	L (COW CANYON) TED HARGRAVES IAN MCCORD (T)
		DIVISION/GROUP	W (COW CANYON) BRIAN CAMPBELL
		DIVISION/GROUP	STRUCTURE / IA (COW CANYON) RICK WOODALL
<b>5. Planning Section:</b>			
CHIEF	MARGE HUTCHINSON		
RESOURCES UNIT	JILL JOHNSON	<b>7b. Air Operations Branch:</b>	
SITUATION UNIT	DAVE WISCHER	AIR OPS BRANCH DIRECTOR	PAUL BALFOUR
DOCUMENTATION UNIT	SUSIE MANEZES (T)	AIR SUPPORT SUPERVISOR	TIM LYDA
DEMOBILIZATION UNIT	MIKE HESTON		
FIRE BEHAVIOR ANALYST	DON STRAND	<b>8. Finance/Administration Section:</b>	
TRAINING SPECIALIST	HANK FALCON (VIRTUAL)	CHIEF	CHERI FULLER; SARAH THORSON (T) CHRISTINA GOEBEL
GIS SPECIALIST	SHAWN BUSHNELL MIKE TONKEL (T)	TIME UNIT	STEVE CROW
TECHNOLOGY SUPPORT SPECIALIST	GEORGE JENKINS DAVE JOHNSON	PROCUREMENT UNIT	MARK BOHNET
INCIDENT METEOROLOGIST	BOB TOBIN	COST UNIT	KAY HIGH (VIRTUAL)
		COMPENSATION UNIT	
<b>6. Logistics Section:</b>			
<b>9. Prepared By:</b>	<b>Name:</b> JILL JOHNSON	<b>Position/Title:</b> RESL	<b>Signature:</b> 
ICS 203	IAP Page	<b>Date/Time:</b> 08/10/2022 2000	

## Fire Weather Forecast

**FORECAST NO:** 7  
**PREDICTION FOR:** Thursday  
**Shift Date:** August 11, 2022  
**TIME AND DATE**

**INCIDENT:** Cow Canyon-Vantage Highway Fires  
**UNIT:** DNR  
**SIGNED:** Bob Tobin  
**Incident Meteorologist (IMET)**

**FORECAST ISSUED:** 8/10/2022 at 2000

*Bob Tobin*

---

**Weather Discussion:** South-southeast flow around the low pressure system will shift to the southwest and will push any additional moisture north and east of the region. This will result in slightly cooler temperatures, but drier conditions, and gusty winds Thursday and Friday. A cold front will move across the Pacific Northwest on Saturday. Expect strong and gusty winds and much cooler temperatures. Then a warm up for the first of the week.

### **WEATHER FORECAST:**

#### **Today:**

**SKY/WEATHER:** Sunny.

**High Temperature...**80-85 on Cow Canyon...88-93 on Vantage Highway.

**Min RH.....**20-25% on Cow Canyon...16-22% on Vantage Highway.

**20-FOOT WINDS:** Southeast-south 8-10 mph.

**CWR (>=0.10")....** 0%    **LAL....**1.    **Haines Index...4** (Low)    **Mixing Height...8500 ft AGL**

#### **Tonight:**

**SKY/WEATHER:** Clear.

**Low Temperature...**55-60 on Cow Canyon...62-68 on Vantage Highway.

**Max RH.....**50-60% on Cow Canyon...40-50% on Vantage Highway.

**20-FOOT WINDS:** Northwest 8-10 mph.

**CWR (>=0.10")....**0%    **LAL...1.**    **Inversion: Moderate after 2100.**

#### **Friday:**

**SKY/WEATHER:** Sunny.

**High Temperature...**82-87 on Cow Canyon...90-95 on Vantage Highway.

**Min RH.....**20-25% on Cow Canyon...15-20% on Vantage Highway.

**20-FOOT WINDS:** Northeast-southeast 5-10 mph.

**CWR (>=0.10")....**0%    **LAL....1**    **Haines Index...3** ( Very Low)    **Mixing Height...10500 ft AGL**

### **Extended Outlook:**

**Saturday...**Sunny and cooler Low: 55-65...High: 75-85. Min RH: 20-30% Winds: West-northwest 12-16 mph with gusts 25-30 mph.

**Sunday...**Sunny. Not quite so cool. Low 50-60. High 78-86. Min RH:25-35% Winds: Northwest 5-10 mph.

# FIRE BEHAVIOR FORECAST

FORECAST NUMBER: 7	TYPE OF FIRE: WILDFIRE
FIRE NAME: Cow Canyon, Vantage Highway	OPERATIONAL PERIOD: DAY SHIFT Aug. 11, 2021
DATE ISSUED: Aug. 10, 2022	TIME ISSUED: 2000 HOURS
UNIT: SES	SIGNED: ___DON STRAND, FBAN_____

## INPUTS

**WEATHER SUMMARY:** See attached spot weather forecast. -- Temps near 93. Min RH near 16%. Winds- Southeast – south 8-10 mph.

**FUELS:** Cow Canyon - grass and brush with timber and brush stringers in draws with larger pockets of timber on northern aspects. Note-Fuel loading in grass fuels is much higher than recent years. Fuel moistures are dry with herbaceous estimated to be partially cured but dry enough to carry fire in most areas. Woody fuels are dry enough for fire spread.

Vantage Highway – Grass fuels are cured, and brush fuels are mostly cured. Note- fuel loading in grass fuels is much higher than past years.

Energy Release Component for the area fires are near the 94<sup>th</sup> to 97<sup>th</sup> percentile.

## OUTPUTS

### FIRE BEHAVIOR

**GENERAL:** Elevated fire behavior potential continues. On Cow Canyon, expect isolated smoldering. Very slight potential for flare ups in areas of dirty burns. Adjacent fuels are very receptive to spots and any spot fires will initiate quickly and spread rapidly. If spotting occurs, it should be short range with max spotting distance near 0.3 miles. Probability of ignition is 80 %.

Head fire rates of spread in the grass/sage will be approaching 60 feet/minute. In the timber fuels, rates of spread will be near 20 feet per minute with single and group torching.

### SPECIFIC:

Cow Canyon: Expect isolated smoldering fire behavior. Vantage Highway: Patrol.

**Initial Attack:** In the event resources respond to a new start, update your Situational Awareness by observing the fuels, weather, and topography where the new fire is located. Any new start in light flashy fuels (grass/brush) can spread rapidly.

### AIR OPERATIONS:

<b>Fire Behavior Safety</b>	C S Y Y I B D W L J D Q B T V H H Y G H
Find the fire terms in the word puzzle.	U O E F T G Y C R C U G I D B H O A J A
	B N M L W I E D A Y F N Z R S P T L Z Z
<b>LCES</b>	S C B P O S D N Q K F I F J T Q S V G A
Dustdevils	O P O U L H Y I B Q Z P H O S H P W I R
Flashyfuels	O X O L R A P W M F G E M H L C O K G D
Duff	U X K T D N C M B U M E K F I S T P G T
Complacency	F S A W F T E E U N H R S F V M S A I R
Stumpholes	L L S B I I R D N T J C U B E O W Y A E
Hazardtrees	A V Y O V P R A I C S M B W D L U V Y E
Humidity	S G P D B Q V E I S Y T Q J T D V D T S
Coldtrail	H L P M U N M K E L L Q W H S E N R T T
Watchouts	Y S T U O H C T A W R A Z V U R B K J X
Smoldering	F G Y K X P R H Q H Q O N B D I U S Z N
Unburnedislands	U P X V X G U C D X J O F D Y N Z A O X
Mopup	E R U T A R E P M E T A Q E S G F Y W X
Creeping	L G N I D D I R G R E U O H S N I E T S
Temperature	S K C A T T A L A I T I N I Z X Q P G Z
Initialattack	K F Z X P G F B S K Y M S B Z W A L V S
Hotspots	R Z R F U Z S K R S M F S C V U K O U D
Spotfire	
wind	

**SAFETY MESSAGE**Incident: **Cow Canyon**Operational Period: **0600-1800**

People ask me “How is your day going” or “How is it going today”, I simply reply I’ll let you know when I’m at home watching the Mariners. Never call a day until you are lying in bed or sitting on your couch watching the game. Anything can happen, a new start, a rapid demob to another incident, a demob home. You’re not home until you’re home, keep your guard up and your SA up until then.



**Driving-** Please keep your speeds down. Incident vehicles are not exempt from the posted speed limits. Drive defensively and expect the unexpected. It only takes a second of distraction to result in an accident.

**Safety Officer** Jack Cates, Taija Corso, Josh Northrup

# Deliberate Risk Assessment-Hazard Summary

11 August 2022

Hazard	Mitigation	Post Risk
Extraction Time	Identify medivac sites and helispots. Initiate ground transport to accident site. Identify EMT's from resources assigned to division. Provide line qualified paramedics to each division as available. Review IWI protocol to ensure familiarity. Utilize short haul in remote areas. Evaluate on-going need for repositioning medical personnel.	High
Snags	Use avoidance to limit exposure time. Snag to avoid exposure. Use qualified fallers and blasting if needed. Conduct on- going risk analysis of all work areas. Follow Hazard Tree Safety Guidelines (IRPG page 20).	High
Transportation	Signing of all incident roads that provide access to divisions. Daily updated travel plan maps. Practice defensive driving. In local communities obey the posted speed limits. Use reader boards to control entry as needed. Identify and evaluate contingency and alternate escape and travel routes, implement controls as needed.	High
Heavy Equipment	Post lookouts around equipment work areas. Establish communications with equipment boss and operator. Do not work down slope from equipment.	High
Aircraft	Utilize Air Attack. Ensure all resources are a safe distance from all bucket and retardant drops. Establish LCES. Utilize air to ground primary radio channel. Reference IRPG (Safe aircraft operations pg. 61). Ensure IA resources have coordination with unassigned local air resources to provide deconfliction.	High
Public Interaction	Implement road and area closures in and adjacent to the perimeter.	Moderate
Unburned Fuels/Firing Ops	Establish LCES. Ensure management action points are implemented and followed. Weather updates as needed during burning operations. Locate indirect firelines to minimize the amount of unburned fuels. Follow Interagency Ignition Guide. Ensure communications between all firing operations. Establish road security at all firing sites. Follow approved firing plan for unburned fuels.	Moderate
Steep Terrain/Gravity	Do not work crews above or below each other. Post lookouts for rolling material. Watch footing in loose soil, rock and around vegetation. Do not work below heavy equipment. Scout and identify travel routes. Establish LCES.	Moderate
Physical Factors	Maintain hydration schedule. Closely monitor work rate and implement rest periods. Maintain nutrition. Ensure adequate work/rest.	Moderate
Environmental Factors	Assign medical personnel to camp. Assess for known allergies and report to medical personnel. Obtain Bee Bopper/wasp spray and yellow jacket traps. Locate dumpsters/trash, food and feeding areas away from sleeping and assembly areas.	Moderate
Fire Behavior	Be aware of burn windows, min/max RH for local conditions. Obtain hourly weather conditions from each Division.	Moderate
Structure Protection	Identify and report compromised service poles and maintain one span avoidance area. Identify downed lines. Treat all lines as live. Identify and avoid vehicles, tires, propane tanks.	Moderate
Initial Attack	Ensure identified IA resources are briefed of expectations and ensure communication plan is provided. Ensure resources are briefed on IA command structure. Provide identified crews with area maps.	Low
COVID Viral Transmission	Maintain awareness of health and perform self-checks. Report and isolate if symptomatic. Coordinate with Kittitas County Public Health for testing, reporting and isolation as needed. <b>Follow agency policy for symptomatic or positive test personnel or public health directions, whichever is more stringent.</b>	Low



**Division/Group Assignment List (ICS 204 WF)**  
**Controlled Unclassified Information//Basic**

<b>1. Incident Name:</b>			<b>3.</b>			
VANTAGE HIGHWAY			<b>Branch:</b>		<b>Division/Group</b>	
<b>2. Operational Period:</b> DAY			A/Z (VANTAGE)			
Date/Time From: 08/11/2022 0600 THU	Date/Time To: 08/11/2022 1800 THU					
<b>4. Operations Personnel</b>						
<b>OPERATIONS CHIEF</b>		AARON ROWE CODY ACORD (T)		<b>DIVISION/GROUP SUPERVISOR</b>		BOB HINDS
<b>AIR OPS BRANCH DIRECTOR</b>		PAUL BALFOUR		<b>SAFETY OFFICER</b>		JACK CATES; TAIJA CORSO
<b>5. Resources Assigned this Period</b>						
Strike Team / Task Force / Resource Designator	LWD	Leader	Number Persons	Drop Off PT./Time	Pick Up PT./Time	
O-28 SOFR	08/16	MARY HUELS	1	KITTITAS/0600	KITTITAS/1800	
NW STRIKE TEAM						
O-91 STEN **	08/13	JOTHAN MCGAUGHEY	1	KITTITAS/0600	KITTITAS/1800	
O-90 STEN (T) **	08/13	TRENTON CROSSLAND	1	KITTITAS/0600	KITTITAS/1800	
E-87 ENG5 DNR NWS E5204 **	08/13	CAMRON ANDERSON	4	KITTITAS/0600	KITTITAS/1800	
E-88 ENG5 DNR PCS E2301 **	08/13	TREY HARTLEY	3	KITTITAS/0600	KITTITAS/1800	
E-89 ENG5 DNR PCS E2205**	08/13	THOMAS TANGEN	4	KITTITAS/0600	KITTITAS/1800	
E-90 ENG5 DNR PCS 1201 **	08/13	FILIFE BARRAGAN	5	KITTITAS/0600	KITTITAS/1800	
E-91 ENG5 DNR OLS E1301 **	08/13	JEFF HAPPE	5	KITTITAS/0600	KITTITAS/1800	
E-32 AMBU AMR ALS	08/16	JACOB AMBACH	2	KITTITAS/0600	KITTITAS/1800	
<b>6. Control Operations/Work Assignments:</b>						
<p>TASK: Monitor, patrol and mop up as necessary  PURPOSE: Contain fire within existing footprint and prevent spread to protect community of Vantage, Puget Sound Energy windmills, and the Vantage Highway and I-90 corridor.  END STATE: Fire is contained to current footprint.</p>						
<b>7. Special Instructions:</b>						
<p>**Pre-identified resources will respond to incidents prioritized by the Division Supervisor based on fire report and location. Division Supervisor may request additional resources to respond based on location and work the resources are engaged in. Fire size up and information will be run thru Communications on the closest repeater to the incident.</p> <p>**If a resource is requested to go from operations, utilization of the new Initial Attack communication plan may be necessary.</p>						
<b>8. Division/Group Communication Summary</b>						
Function	Channel	RX Frequency N/W	RX Tone/NAC	TX Frequency N/W	TX Tone/NAC	Mode
COMMAND	3	168.4750	156.7	165.4000	156.7	A
TACTICAL	7	166.7750	107.2	166.7750	107.2	A
AIR TO GROUND	14	169.2000		169.2000		A
AIR TO GROUND	15	167.9500		167.9500		A
<b>9. Prepared By (Resource Unit Leader)</b>			<b>Approved By (Planning Section Chief)</b>		<b>Date</b>	<b>Time</b>
JILL JOHNSON			MARGE HUTCHINSON		08/10/2022	2000

**Division/Group Assignment List (ICS 204 WF)**  
**Controlled Unclassified Information//Basic**

<b>1. Incident Name:</b>			<b>3.</b>			
VANTAGE HIGHWAY			<b>Branch:</b>		<b>Division/Group</b>	
<b>2. Operational Period: DAY</b>			<b>E/M (VANTAGE)</b>			
Date/Time From: 08/11/2022 0600 THU		Date/Time To: 08/11/2022 1800 THU				
<b>4. Operations Personnel</b>						
<b>OPERATIONS CHIEF</b>		AARON ROWE CODY ACORD (T)		<b>DIVISION/GROUP SUPERVISOR</b>		SAM STEINSHOUER
<b>AIR OPS BRANCH DIRECTOR</b>		PAUL BALFOUR		<b>SAFETY OFFICER</b>		JACK CATES; TAIJA CORSO
<b>5. Resources Assigned this Period</b>						
Strike Team / Task Force / Resource Designator		LWD	Leader	Number Persons	Drop Off PT./Time	Pick Up PT./Time
O-28 SOFR		08/16	MARY HUELS	1	KITTITAS/0600	KITTITAS/1800
O-9 HEQB (T) **		08/14	ANDREW NAUGHTON	1	KITTITAS/0600	KITTITAS/1800
C-2 CRW2 DNR CASCADE **		08/16	JOHN MOON	20	KITTITAS/0600	KITTITAS/1800
E-15 DZR3 DUKES EQUIPMENT **		08/14	STEVEN HALEY	2	KITTITAS/0600	KITTITAS/1800
O-27 EMTF		08/16	MICHAEL SCHMIDTGALL	1	KITTITAS/0600	KITTITAS/1800
<b>6. Control Operations/Work Assignments:</b>						
<p>TASK: Monitor, patrol and mop-up as necessary  PURPOSE: Contain fire edge and prevent fire spread to protect Puget Sound Energy windmills, private property and infrastructure, and valuable wildlife habitat.  END STATE: Fire is contained to current footprint.</p>						
<b>7. Special Instructions:</b>						
<p>**Pre-identified resources will respond to incidents prioritized by the Division Supervisor based on fire report and location. Division Supervisor may request additional resources to respond based on location and work the resources are engaged in. Fire size up and information will be run thru Communications on the closest repeater to the incident.</p> <p>**If a resource is requested to go from operations, utilization of the new Initial Attack communication plan may be necessary.</p>						
<b>8. Division/Group Communication Summary</b>						
Function	Channel	RX Frequency N/W	RX Tone/NAC	TX Frequency N/W	TX Tone/NAC	Mode
COMMAND	3	168.4750	156.7	165.4000	156.7	A
TACTICAL	6	166.7250	107.2	166.7250	107.2	A
AIR TO GROUND	14	169.2000		169.2000		A
AIR TO GROUND	15	167.9500		167.9500		A
<b>9. Prepared By (Resource Unit Leader)</b>			<b>Approved By (Planning Section Chief)</b>		<b>Date</b>	<b>Time</b>
JILL JOHNSON			MARGE HUTCHINSON		08/10/2022	2000

**Division/Group Assignment List (ICS 204 WF)**  
**Controlled Unclassified Information//Basic**

<b>1. Incident Name:</b>			<b>3.</b>			
COW CANYON			<b>Branch:</b>		<b>Division/Group</b>	
<b>2. Operational Period: DAY</b>			C (COW CANYON)			
Date/Time From: 08/11/2022 0600 THU		Date/Time To: 08/11/2022 1800 THU				
<b>4. Operations Personnel</b>						
<b>OPERATIONS CHIEF</b>		AARON ROWE KURT RANTA (T);		<b>DIVISION/GROUP SUPERVISOR</b>		MATT KENNEDY CARSON ZEPP (T)
<b>AIR OPS BRANCH DIRECTOR</b>		PAUL BALFOUR		<b>SAFETY OFFICER</b>		JACK CATES; TAIJA CORSO
<b>5. Resources Assigned this Period</b>						
Strike Team / Task Force / Resource Designator		LWD	Leader	Number Persons	Drop Off PT./Time	Pick Up PT./Time
O-30.71 SOF2		08/18	JOSH NORTHRUP	1	NACHES/0600	NACHES/1800
O-17 HEQB (T)		08/17	PAXTON STONE	1	NACHES/0600	NACHES/1800
C-10 CRW WENATCHEE RV 74		08/14	BEN MARQUART	23	NACHES/0600	NACHES/1800
E-5 WTS2 KING HYDROSEEDING		08/18	DON WARDEN	1	NACHES/0600	NACHES/1800
E-1 DZR3 TOP RAIL LLC			NICK LUKEHURT	2	NACHES/0600	NACHES/1800
O-31 REM BEYOND THE EDGE		08/20	MATT FOX	5	NACHES/0600	NACHES/1800
<b>6. Control Operations/Work Assignments:</b>						
<p>TASK: Secure and mop up fireline to turn back specifications.  PURPOSE: Contain fire edge and prevent fire spread to the north and west, eliminating any further threat to residences in the Manastash area and any natural/cultural resources.  END STATE: Fire is contained to current footprint.</p>						
<b>7. Special Instructions:</b>						
<b>8. Division/Group Communication Summary</b>						
Function	Channel	RX Frequency N/W	RX Tone/NAC	TX Frequency N/W	TX Tone/NAC	Mode
COMMAND	1	170.6875	156.7	166.5750	156.7	A
COMMAND	2	171.7500	156.7	164.6750	156.7	A
TACTICAL	4	168.0500	107.2	168.0500	107.2	A
AIR TO GROUND	12	169.6500		169.6500		A
AIR TO GROUND	13	169.8125		169.8125		A
<b>9. Prepared By (Resource Unit Leader)</b>			<b>Approved By (Planning Section Chief)</b>		<b>Date</b>	<b>Time</b>
JILL JOHNSON			MARGE HUTCHINSON		08/10/2022	2000

**Division/Group Assignment List (ICS 204 WF)**  
**Controlled Unclassified Information//Basic**

<b>1. Incident Name:</b>			<b>3.</b>			
COW CANYON			<b>Branch:</b>		<b>Division/Group</b>	
<b>2. Operational Period: DAY</b>			L (COW CANYON)			
Date/Time From: 08/11/2022 0600 THU		Date/Time To: 08/11/2022 1800 THU				
<b>4. Operations Personnel</b>						
<b>OPERATIONS CHIEF</b>		AARON ROWE KURT RANTA (T);		<b>DIVISION/GROUP SUPERVISOR</b>		TED HARGRAVES IAN MCCORD (T)
<b>AIR OPS BRANCH DIRECTOR</b>		PAUL BALFOUR		<b>SAFETY OFFICER</b>		JACK CATES; TAIJA CORSO
<b>5. Resources Assigned this Period</b>						
Strike Team / Task Force / Resource Designator		LWD	Leader	Number Persons	Drop Off PT./Time	Pick Up PT./Time
O-30.72 SOF2		08/19	PAUL BRNA	1	NACHES/0600	NACHES/1800
O-57 TFLD		08/27	KENT STANFORD	1	NACHES/0600	NACHES/1800
E-48 ENG6 WILD FIRE SERVICES INC		08/20	TIMOTHY LOGOZZO	3	NACHES/0600	NACHES/1800
E-30 AMB2 PROTECTION -1		08/19	BRAD STINE	2	NACHES/0600	NACHES/1800
O-44 EMPF		08/11	ADAM WUNSCH	1	NACHES/0600	NACHES/1800
<b>6. Control Operations/Work Assignments:</b>						
<p>TASK: Secure and mop up fireline to turn back specifications.  PURPOSE: Contain fire edge and prevent fire spread to the north and east eliminating any further threat to residences in the Ellensburg area and any natural/cultural resources.  END STATE: Fire is contained to current footprint.</p>						
<b>7. Special Instructions:</b>						
<b>8. Division/Group Communication Summary</b>						
Function	Channel	RX Frequency N/W	RX Tone/NAC	TX Frequency N/W	TX Tone/NAC	Mode
COMMAND	1	170.6875	156.7	166.5750	156.7	A
COMMAND	2	171.7500	156.7	164.6750	156.7	A
TACTICAL	5	168.6000	107.2	168.6000	107.2	A
AIR TO GROUND	12	169.6500		169.6500		A
AIR TO GROUND	13	169.8125		169.8125		A
<b>9. Prepared By (Resource Unit Leader)</b>			<b>Approved By (Planning Section Chief)</b>		<b>Date</b>	<b>Time</b>
JILL JOHNSON			MARGE HUTCHINSON		08/10/2022	2000

**Division/Group Assignment List (ICS 204 WF)**  
**Controlled Unclassified Information//Basic**

<b>1. Incident Name:</b>			<b>3.</b>			
COW CANYON			<b>Branch:</b>		<b>Division/Group</b>	
<b>2. Operational Period: DAY</b>			W (COW CANYON)			
Date/Time From: 08/11/2022 0600 THU		Date/Time To: 08/11/2022 1800 THU				
<b>4. Operations Personnel</b>						
<b>OPERATIONS CHIEF</b>		AARON ROWE KURT RANTA (T);		<b>DIVISION/GROUP SUPERVISOR</b>		BRIAN CAMPBELL
<b>AIR OPS BRANCH DIRECTOR</b>		PAUL BALFOUR		<b>SAFETY OFFICER</b>		JACK CATES; TAIJA CORSO
<b>5. Resources Assigned this Period</b>						
Strike Team / Task Force / Resource Designator		LWD	Leader	Number Persons	Drop Off PT./Time	Pick Up PT./Time
O-30.72 SOF2		08/19	PAUL BRNA	1	NACHES/0600	NACHES/1800
E-29 AMB1 CLARK COUNTY FR		08/20	DANIEL FERBER	2	NACHES/0600	NACHES/1800
O-54 EMPF		08/20	TRAVIS WILSON	1	NACHES/0600	NACHES/1800
<b>6. Control Operations/Work Assignments:</b>						
TASK: Secure and mop up fireline to turn back specifications. PURPOSE: Contain fire edge and prevent fire spread to the south eliminating any further threat to residences in the Wenas area and any natural/cultural resources. END STATE: Fire is contained to current footprint.						
<b>7. Special Instructions:</b>						
<b>8. Division/Group Communication Summary</b>						
Function	Channel	RX Frequency N/W	RX Tone/NAC	TX Frequency N/W	TX Tone/NAC	Mode
COMMAND	1	170.6875	156.7	166.5750	156.7	A
COMMAND	2	171.7500	156.7	164.6750	156.7	A
TACTICAL	6	166.7250	107.2	166.7250	107.2	A
AIR TO GROUND	12	169.6500		169.6500		A
AIR TO GROUND	13	169.8125		169.8125		A
<b>9. Prepared By (Resource Unit Leader)</b>			<b>Approved By (Planning Section Chief)</b>		<b>Date</b>	<b>Time</b>
JILL JOHNSON			MARGE HUTCHINSON		08/10/2022	2000

**Division/Group Assignment List (ICS 204 WF)**  
**Controlled Unclassified Information//Basic**

<b>1. Incident Name:</b>			<b>3.</b>			
COW CANYON			<b>Branch:</b>		<b>Division/Group</b>	
<b>2. Operational Period: DAY</b>			<b>STRUCTURE / IA (COW CANYON)</b>			
Date/Time From: 08/11/2022 0600 THU		Date/Time To: 08/11/2022 1800 THU				
<b>4. Operations Personnel</b>						
<b>OPERATIONS CHIEF</b>		AARON ROWE KURT RANTA (T);		<b>DIVISION/GROUP SUPERVISOR</b>		RICK WOODALL
<b>AIR OPS BRANCH DIRECTOR</b>		PAUL BALFOUR		<b>SAFETY OFFICER</b>		JACK CATES; TAIJA CORSO
<b>5. Resources Assigned this Period</b>						
Strike Team / Task Force / Resource Designator		LWD	Leader	Number Persons	Drop Off PT./Time	Pick Up PT./Time
O-53 TFLD **		08/15	RICH WALLMOW	1	NACHES/0600	NACHES/1800
C-2 CR21 MT BAKER		08/19	ERIC USHER	20	NACHES/0600	NACHES/1800
DNR STRIKE TEAM						
O-50 TFLD **		08/14	MATHEW CALDWELL	1	NACHES/0600	NACHES/1800
O-51 TFLD (T) **		08/14	BRIAN WILLIAMS	1	NACHES/0600	NACHES/1800
E-55 ENG5 DNR E5102 **		08/14	IRIS BANKS	4	NACHES/0600	NACHES/1800
E-56 ENG5 DNR E5105 **		08/14	LUKE ACORN	4	NACHES/0600	NACHES/1800
E-57 ENG5 DNR E5201 **		08/14	ISAAC DUGGER	4	NACHES/0600	NACHES/1800
E-58 ENG5 DNR E8262 **		08/14	MARTIN FERRELL	3	NACHES/0600	NACHES/1800
E-59 ENG5 DNR E2406 **		08/14	MATHEW SABIN	3	NACHES/0600	NACHES/1800
E-45 WTS2 RIDGE TOP IRON (6WD) **		08/20	TIM WHITEHURST	1	NACHES/0600	NACHES/1800
E-17 DZR4 BADGER DIRTWORKS **		08/17	KYLE MARTIN	2	NACHES/0600	NACHES/1800
<b>8. Division/Group Communication Summary</b>						
Function	Channel	RX Frequency N/W	RX Tone/NAC	TX Frequency N/W	TX Tone/NAC	Mode
COMMAND	1	170.6875	156.7	166.5750	156.7	A
COMMAND	2	171.7500	156.7	164.6750	156.7	A
TACTICAL	7	166.7750	107.2	166.7750	107.2	A
AIR TO GROUND	12	169.6500		169.6500		A
AIR TO GROUND	13	169.8125		169.8125		A
<b>9. Prepared By (Resource Unit Leader)</b>			<b>Approved By (Planning Section Chief)</b>		<b>Date</b>	<b>Time</b>
JILL JOHNSON			MARGE HUTCHINSON		08/10/2022	2000

## Division/Group Assignment List (ICS 204 WF)

Controlled Unclassified Information//Basic

<b>1. Incident Name:</b>			<b>3.</b>			
COW CANYON			<b>Branch:</b>	<b>Division/Group</b>		
<b>2. Operational Period: DAY</b>						
Date/Time From: 08/11/2022 0600 THU		Date/Time To: 08/11/2022 1800 THU		<b>STRUCTURE / IA (COW CANYON)</b>		
<b>4. Operations Personnel</b>						
<b>OPERATIONS CHIEF</b>		AARON ROWE KURT RANTA (T);		<b>DIVISION/GROUP SUPERVISOR</b>		RICK WOODALL
<b>AIR OPS BRANCH DIRECTOR</b>		PAUL BALFOUR		<b>SAFETY OFFICER</b>		JACK CATES; TAIJA CORSO
<b>5. Resources Assigned this Period</b>						
Strike Team / Task Force / Resource Designator		LWD	Leader	Number Persons	Drop Off PT./Time	Pick Up PT./Time
<b>6. Control Operations/Work Assignments:</b>						
<p>TASK: Finalize structure protection plan for structures in the vicinity of the Cow Canyon fire perimeter while maintaining IA readiness.</p> <p>PURPOSE: Develop a written structure plan for identified structures to hand off to local fire district. Prepared to respond to new starts. See special instructions.</p> <p>END STATE: Structure protection plan is completed and implemented as necessary. Aggressive IA occurs minimizing acres burned and any additional impacts to local communities and any natural/cultural resources.</p>						
<b>7. Special Instructions:</b>						
<p>**Pre-identified resources will respond to incidents within the TFR and be prioritized by the Division Supervisor based on fire report and location. Division Supervisor may request additional resources to respond based on location and work the resources are engaged in. Fire size up and information will be run thru Communications on the closest repeater to the incident.</p> <p>**Resources may respond to incidents outside the TFR at the direction of the IMT to support the local unit. If a resource is requested to go from operations, utilization of the new Initial Attack communication plan may be necessary.</p>						
<b>8. Division/Group Communication Summary</b>						
Function	Channel	RX Frequency N/W	RX Tone/NAC	TX Frequency N/W	TX Tone/NAC	Mode
COMMAND	1	170.6875	156.7	166.5750	156.7	A
COMMAND	2	171.7500	156.7	164.6750	156.7	A
TACTICAL	7	166.7750	107.2	166.7750	107.2	A
AIR TO GROUND	12	169.6500		169.6500		A
AIR TO GROUND	13	169.8125		169.8125		A
<b>9. Prepared By (Resource Unit Leader)</b>			<b>Approved By (Planning Section Chief)</b>		<b>Date</b>	<b>Time</b>
JILL JOHNSON			MARGE HUTCHINSON		08/10/2022	2000

**AIR OPERATIONS SUMMARY**

PREPARED BY: Paul Balfour

PREPARED DATE/TIME: August 10, 2022 1800hrs

<b>INCIDENT NAME</b> COW CANYON	<b>2. OPERATIONAL PERIOD:</b> Date: 8/11/2022      Helibase Start Time: 0830 End Time: 2030      Sunrise: 0554 Sunset: 2019 (Times valid for Ellensburg)
------------------------------------	--

<b>3. REMARKS (Safety Notes, Hazards, Air Operations Special Equipment, etc.):</b> General Aviation, See & Avoid  Bucket work, Retardant drops: ensure area is clear of ground personnel before dropping; watch for wires; be aware of potential for turbulence at ridge tops, saddles, canyons, etc *** BE AWARE OF FATIGUE, TAKE LONGER BREAKS WHEN FLYING IN SMOKEY CONDITIONS. *** Report all TFR intrusions to Air Operations, Air Support or Helibase as soon as possible.	<b>4. MEDEVAC A/C:</b> Contact CWICC 509-884-3473 N125CL Mt Rainer SH	<b>5. TFR #2/5754</b> 118.7250 (A50)
---	--	---

6. PERSONNEL LWD	Phone	7. FREQUENCIES	AM	FM	8. FIXED-WING	# Avail / Type/ Make-Model / FAA N# / Base(s)
AOBD: Paul Balfour O-30.43	509-993-8739	AIR/AIR Primary (A-9)	118.7250		Fixed Wing/Buckets	DIVS order thru ATGS if up, or Communications
ASGS: Tim Lyda O- 30.44	541-761-2676	AIR/AIR Secondary (A-10)	125.1250			
HEBM:		AIR/GROUND Primary (A-11)		169.6500	ATGS Aircraft	Will use available ATGS throughout the operational period until TEAM ATGS is filled  LATs Order through Air Attack/AOBD Or CWICC
HEMG:		AIR/GROUND (A-12)		169.8125		
ATGS:		DNR-AIR/GROUND IA		159.270 T-103.5		
ATGS:		AIR/Ground			NOTES:	
CWICC:	509-884-3473	UNICOM				
		DECK				
						email costs to timlyda22@gmail.com

**9. HELICOPTERS**

FAA N#	TY	MAKE/MODEL	BASE	START	AVAIL	REMARKS	FAA N#	TY	MAKE/MODEL	BASE	START	AVAIL	REMARKS



# INCIDENT RADIO COMMUNICATIONS PLAN (ICS 205)

Controlled Unclassified Information//Basic

<b>1. Incident Name:</b>	<b>2. Date/Time Prepared:</b>	<b>3. Operational Period:</b> DAY	
VANTAGE HIGHWAY / COW CANYON	Date: 08/10/2022 Time: 1800	Date/Time From: 08/11/2022 0600 THU	Date/Time To: 08/11/2022 1800 THU

**4. Basic Radio Channel Use:**

Zone Group	Ch #	Function	Channel Name/Trunked Radio System Talkgroup	Assignment	RX Freq	RX Tone/NAC	TX Freq	TX Tone/NAC	Mode (A,D, or M)	Remarks
	1	COMMAND	CMD 1	COW CANYON	170.6875	156.7	166.5750	156.7	A	LOCATION CLEMAN MTN
	2	COMMAND	CMD 2	COW CANYON	171.7500	156.7	164.6750	156.7	A	LOCATION UMPTANUM RIDGE
	3	COMMAND	CMD 3	VANTAGE HWY	168.4750	156.7	165.4000	156.7	A	LOCATION DP 130
	4	TACTICAL	TAC 4	DIV C	168.0500	107.2	168.0500	107.2	A	
	5	TACTICAL	TAC 5	DIV L	168.6000	107.2	168.6000	107.2	A	
	6	TACTICAL	TAC 6	DIV W AND DIV E/M	166.7250	107.2	166.7250	107.2	A	
	7	TACTICAL	TAC 7	DIV A/Z; STRUCTURE	166.7750	107.2	166.7750	107.2	A	
	8	COMMAND	WHISKEY	ALL DIVS VANTAGE HWY	151.4000	103.5	168.2500	107.2	A	ALL DIVS ON VANTAGE-USE FOR BACKUP IF CMD3 INOP
	9	COMMAND	DNR CLEM	IA ONLY	159.3450	114.8	151.4675	114.8	A	
	10	TACTICAL	DNR COM	IA ONLY	151.4150	103.5	151.4150	103.5	A	
	11	AIR TO GROUND	DNR A/G 1	IA ONLY	159.2700	103.5	159.2700	103.5	A	
	12	AIR TO GROUND	A/G PRI 1	COW CANYON	169.6500		169.6500		A	
	13	AIR TO GROUND	A/G SEC 1	COW CANYON	169.8125		169.8125		A	
	14	AIR TO GROUND	A/G PRI 2	VANTAGE HWY	169.2000		169.2000		A	
	15	AIR TO GROUND	A/G SEC 2	VANTAGE HWY	167.9500		167.9500		A	
	16	AIR GUARD	AIRGUARD	ALL DIVISIONS	168.6250		168.6250	110.9	A	

**5. Special Instructions:**

<b>6. Prepared By</b> (Communications Unit Leader)	Name: MISSY PARKER	Signature: <i>Missy Parker</i>
ICS 205	IAP Page	Date/Time: 08/10/2022 1800

# INCIDENT RADIO COMMUNICATIONS PLAN (ICS 205)

Controlled Unclassified Information//Basic

<b>1. Incident Name:</b>	<b>2. Date/Time Prepared:</b>	<b>3. Operational Period:</b> DAY	
<b>INITIAL ATTACK</b>	Date: 08/10/2022 Time: 1800	Date/Time From: 08/11/2022 0600 THU	Date/Time To: 08/11/2022 1800 THU

4. Basic Radio Channel Use:										
Zone Group	Ch #	Function	Channel Name/Trunked Radio System Talkgroup	Assignment	RX Freq	RX Tone/NAC	TX Freq	TX Tone/NAC	Mode (A,D, or M)	Remarks
	1	TACTICAL	DNR COM		151.4150	103.5	151.4150	103.5	A	DNR STATEWIDE
	2	TACTICAL	DNR TAC 1		151.3100	103.5	151.3100	103.5	A	DNR STATEWIDE
	3	COMMAND	WHISKEY		151.4000	103.5	159.2850	156.7	A	TACT RPTR-WHISKEY DICK MTN
	4	TACTICAL	KC TAC 5		159.2025	210.7	159.2025	210.7	A	KITTITAS CO FIRE
	5	TACTICAL	YTC M/A1		163.4875		163.4875		A	YAKIMA FIRING CENTER
	6	TACTICAL	YTC M/A2		173.4875		173.4875		A	YAKIMA FIRING CENTER
	7	TACTICAL	WA REDNT		153.8300		153.8300		A	STATE FIRE MARSHAL
	8	COMMAND	NANEUM		159.3225	D023	151.3625	D023	A	WEN MTN - NANEUM CREEK
	9	COMMAND	DNR CLEM		159.3450	114.8	151.4675	114.8	A	CLEMAN MTN-YAKIMA CO
	10	COMMAND	ST PRIST		159.4200	D723	151.2950	D723	A	SADDLE MTN-BEVERLY
	11	COMMAND	ST GRANT		159.4200	D431	151.2950	D431	A	BEEZLEY HILLS-EPHRATA
	12	COMMAND	FIRE OPS		155.1375	162.2	153.8150	141.3	A	KITTITAS CO FIRE
	13	COMMAND	FIRE PAGE		154.2050	151.4	153.7475	218.1	A	KITTITAS CO FIRE
	14	AIR TO GROUND	DNR A/G 1		159.2700	103.5	159.2700	103.5	A	DNR AIR/GROUND PRIMARY
	15	AIR TO GROUND	A/G 40		167.4500		167.4500		A	USFS AIR/GROUND PRIMARY
	16	COMMAND	CMD 2		171.7500	156.7	164.6750	156.7	A	LOC ON UMPTANUM RDG-ASSIGNED TO COW CYN

<b>5. Special Instructions:</b>
---------------------------------

<b>6. Prepared By</b> (Communications Unit Leader)	Name: MISSY PARKER	Signature: <i>Missy Parker</i>
ICS 205	IAP Page	Date/Time: 08/10/2022 1800

# DMOB LIST FOR THURSDAY 8-11-22

## VANTAGE HIGHWAY WA-SES-000263

### CREWS

C-2            1500            (CRW2)            DNR CASCADE 20

### EQUIPMENT

E-87            1515            (ENG5)            ENG5 - 5204 - WA-NWS  
E-88            1530            (ENG5)            ENG5 DNR 2301  
E-89            1545            (ENG5)            ENG5 - 2205 - WA-PCS  
E-90            1600            (ENG4)            ENG4 DNR ENGINE 1201  
E-91            1615            (ENG4)            ENG4 DNR ENGINE 1301  
E-15            1700            (DZR3)            DUKES EQUIPMENT D3  
E-32            1830            (MEDV)            AMR AMBULANCE TYPE 2

### OVERHEAD

O-90            1600            (STEN)            CROSSLAND, TRENTON ELI  
O-25            1600            (EMTF)            PERRY, DREW  
O-91            1615            (TFLD)            MCGAUGHEY, JOTHAN KELVYN  
O-9            1700            (HEQB)            NAUGHTON, ANDREW JAMES  
O-28            1800            (SOFR)            HUELS, MARY E  
O-27            1800            (EMTF)            SCHMIDTGALL, MICHAEL  
O-54            1900            (PIOF)            APPELHOF, HEATHER

### DMOB Procedures

1. Have all CTRs completed before arrival.
2. Arrive at FINANCE/DEMOB at the designated time.
3. Turn in DEMOB paperwork to finalize the process.



Vantage Highway Finance Map



Cow Canyon Fire Finance Map

# DMOB LIST FOR THURSDAY 8-11-22

## COW CANYON WA-SES-000277

### CREWS

C-16	0630	(CR2I)	OWF ENTIAT
C-14	0700	(CRW2)	WEST COAST REFORESTATION AM5
C-17	0730	(CR2I)	PATRICK ENVIRONMENTAL 10A

### EQUIPMENT

E-44	0645	(WTS2)	KELSI N BEAMAN - 119968
E-61	0800	(WTS2)	R & K WATER SERVICE INC
E-40	0815	(SKG2)	KELSI N BEAMAN -
E-47	0830	(ENG5)	WILD FIRE SERVICES INC
E-45	1900	(WTS2)	RIDGE TOP IRON LLC
E-48	1930	(ENG6)	WILD FIRE SERVICES INC
E-17	1945	(DZR4)	BADGER DIRTWORKS
E-1	2000	(DZR3)	TOP RAIL, LLC - 8RC05846
E-30	2030	(AMB2)	PROTECTION -1, LLC

### DMOB Procedures

1. Have all CTRs completed before arrival.
2. Arrive at FINANCE/DEMOB at the designated time.
3. Turn in DEMOB paperwork to finalize the process.



Vantage Highway Finance Map



Cow Canyon Fire Finance Map

# DMOB LIST FOR FRIDAY 8-12-22

## VANTAGE HIGHWAY WA-SES-000263

### EQUIPMENT

E-40	0800	(STK1)	HI COUNTRY LLC
E-42	0800	(PUP1)	WILDLAND FIRE SUPPORT
E-83	0900	(GOLF)	TOP GUN RESOURCES- GOLF CART

### OVERHEAD

O-30.72	0600	(SOF2)	BRNA, PAUL
O-92	0800	(CAMP)	WARNSTADT, BLAKE EDWARD
O-85	0900	(DRIV)	TESSIER, RYAN WALLACE
O-10.19	1200	(RADO)	SALTER, KATHRYN MARY
O-17	1600	(RADO)	INDERWIESEN, CRAIG ANDREW
O-38	1600	(COML)	MINER, JEFF SCOTT

**NOTE: DEMOB FOR FRIDAY SHALL BE DONE ON THURSDAY BY 2130 PROJECTING YOUR TIME**

### DMOB Procedures For Friday

1. Have all CTRs completed before arrival.
2. DMOB and FINANCE will be collocated at Finance.



Vantage Highway Finance Map



Cow Canyon Fire Finance Map

# DMOB LIST FOR FRIDAY 8-12-22

## COW CANYON WA-SES-000277

### CREWS

C-2	0600	(CR2I)	MT BAKER IA
C-10	0615	(CR2I)	OWF WENATCHEE RIVER

### EQUIPMENT

E-29	0600	(AMB1)	AMB1 CLARK COUNTY FR
E-5	0615	(WTS2)	KING HYDROSEEDING

### OVERHEAD

O-31	0600	(VUTV)	BEYOND THE EDGE LLC REM
O-54	0615	(EMPF)	WILSON, TRAVIS ROBERT
O-44	0615	(EMPF)	WUNSCH, ADAM S
O-17	0630	(HEQB)	STONE, PAXTON MICHAEL

**NOTE: DEMOB FOR FRIDAY SHALL BE DONE ON THURSDAY BY 2130 PROJECTING YOUR TIME**

### DMOB Procedures For Friday

1. Have all CTRs completed before arrival.
2. DMOB and FINANCE will be collocated at Finance.



Vantage Highway Finance Map



Cow Canyon Fire Finance Map



# Public Information

**PHOTOS:** Your fireline photos help us build understanding with the public. We are looking for any pictures of the fire line, mop-up work, and **fire resources working on the fire line in their PPE.**

**Please send your photos to the right email address so we will know what fire you are working!**

You can send photos to:

**Cow Canyon Fire:** [2022.cowcanyon@firenet.gov](mailto:2022.cowcanyon@firenet.gov)

**Vantage Hwy Fire:** [2022.vantagehighway@firenet.gov](mailto:2022.vantagehighway@firenet.gov)

**Text for pictures (please state which fire): 541-200-4485**

As always, make sure you're wearing all your PPE and conveying a professional, caring, and respectful attitude toward the homes and land in this community. Thanks for helping us out!

**QUESTIONS FROM THE PUBLIC:** If community members have questions that you do not feel equipped to answer professionally, please give them our fire information line: 509-557-0063.

**LOST AND FOUND:** We have a lost and found in the Information shop in the ICP. If you have lost something, please stop by and see if it has been turned in. If you find something left around ICP or camp, you can turn it in to us.

# TRAINING MESSAGE

Educating trainees on their responsibilities.

## Final Comments

We have come to the end of the incident and it's time to say good-bye.

Here are some reminders for your next assignment.

- ❖ Determine your goals for your next training assignment and share them with your home training officer and your next trainer.
- ❖ Always get a Performance Evaluation. If you don't receive one, ask for it.
- ❖ Make sure that your performance evaluation and taskbook are filled out completely. Don't leave boxes empty! Once you leave the fire, it's difficult to backtrack ... ex: signatures, individuals, forms, etc.
- ❖ Always have control of your taskbook! Treat it like it was your birth certificate or passport. If someone needs information, give them a copy; always keep the original with you, consider making an electronic copy.
- ❖ Train with different trainers and build your own style!
- ❖ When your train, focus on your weakness.
- ❖ Remember just because your "signed off" does not mean you are automatically qualified. ... *You are still a trainee!!*

\*\*\*\*\*

Please use the QR Code to complete the Close-out/Exit process for training.

## Close-Out/Exit



\*\*\*\*\*

Hank Falcon / Training Specialist  
541-727-1022 / henry\_falcon@firenet.gov



# HUMAN RESOURCE MESSAGE

VANTAGE HIGHWAY AND COW CANYON

AUGUST 11, 2022



**Thank you everyone for a job well done!**

**It is great to have amazing workers like you on our team. Despite the many challenges you were faced with while working on these fires, you did your best and you delivered right on target. The community and the agencies thank you for your hard work, as do we. Your professionalism and positive attitudes were evident as you continued to work in extreme conditions.**

**Most of us will be demobbing and traveling home however, some of you will transition with the incoming team. For those traveling home, please drive safely and take rest breaks as needed. Remember, we are always in the public eye so stay professional as you journey home. Treat everyone with dignity and respect.**

**For those of you who are remaining with the fire, please make sure you stay hydrated and try to take rest breaks throughout the day. Stay professional and keep mutual respect in your mind as you go about your day.**

**Please take care of yourselves and we will see you on the next one.**

**Stay safe and have a wonderful day!**

Susie Manezes, HRSP Team 12





**TO: ALL PERSONNEL**

**FROM: DEPARTMENT OF NATURAL RESOURCES  
DEPARTMENT OF CORRECTIONS**

**WILDFIRE**

**SUBJECT: WORKING AROUND OFFENDERS/DNR  
KITCHENS**

- **NO PERSON SHALL BE ALLOWED TO CARRY FIREARMS IN THE AREA WHERE OFFENDERS ARE WORKING.** ( It is acceptable to secure weapons in vehicles while entering into the working vicinity of offenders)
- **DO NOT GIVE OR TAKE ANYTHING FROM AN OFFENDER.** (Offenders are identified by red ball caps or red hard hats.)
- **DO NOT TAKE PHOTOS OR INTERVIEW OFFENDERS WITHOUT APPROVAL FROM DNR INMATE LIAISON.** (Signed consent forms required.)
- **DO NOT DO ANY FAVORS FOR OFFENDERS.** (Examples passing on a message, giving tobacco, asking for change, mailing a letter, using a phone, etc.)
- **PROMPTLY REPORT ANY SUSPICIOUS ACT TO THE SUPERVISOR, DOC STAFF OR INMATE LIAISON.** (The most innocent act/favor can have consequences that could negatively affect an offender for years.)
- **USE OF TABACCO PRODUCTS IN KITCHEN AREA IS NOT ALLOWED.** (Offenders are not allowed to use any tobacco products.)
- **HARRASSMENT OF ANY KIND WILL NOT BE TOLDERATED.** (All harassment allegations involving offenders will be reported to Human Resources and the involved agencies representatives.)
- **OFFENDERS ON DNR CREWS ARE RATED AS MINIMUM CUSTODY.**
- **TREAT OFFENDERS WITH RESPECT, BUT PRACTICE THE CORRECTIONAL DISTANCE. DON'T GET PERSONAL.** (Offenders generally feel good with being part of the fire suppression effort, treat them with the same respect and dignity as other fire fighters but DON'T GET PERSONAL.
- **OFFENDERS ARE TRAINED IN WORK ETHICS AND JOB SKILLS.** (Offenders are trained and experienced in their job assignments and work ethic. They are held accountable for job performance and behavior.)

**ACKNOWLEDGE CREWS FOR A JOB WELL DONE, OFFENDERS DO GOOD WORK AND APPRECIATE THE RECOGNITION.** Offenders need good professional role models as part of their rehabilitation process, consider their presence and set good examples by the context of your conversations and choice of language used.

# Logistics Message

## ICP - Kittitas Valley Event Center

<b>Ground Support</b>	0500-2200	Western Village
<b>Supply</b>	0500-2200	Western Village
<b>Medical</b>	0600-2200	Western Village
<b>Communications</b>	24/7	Armory at Fairgrounds
<b>Showers</b>	0400-1100 1400-2130	Near Gazebo at Fairgrounds

## Vantage Highway - Kittitas Secondary School

<b>Kitchen</b>	Breakfast	0500-0900	Kittitas Secondary School
	Dinner	1800-2100	Kittitas Secondary School

## Cow Canyon - Naches Middle/High School

<b>Kitchen</b>	Breakfast	0530-0930	Naches Middle School
	Dinner	1730-2130	Naches Middle School
<b>Showers</b>	0500-1200 1400-2200	Naches Middle School (Behind School)	





Supply Cache

Ground Support Parking



Road Closed

Water

Handwash Station

Comm's Trailer

Finance (Demob & CTR)

ICE

Check-In

Plans / Ops / Safety

Gazebo All Meals

Shower Trailer

Incident Command Post Map  
Kittitas Event Center



Parking

Camping  
(GRASS ONLY)

**NO**  
Parking



Showers

Day  
Sleeping

Camping  
(GRASS ONLY)

Meals

Plans/Ops/Safety  
Finance/Logs  
Medical



Camping  
(GRASS ONLY)

Water  
& Ice

Garbage/  
Dumpster

Parking

Cow Canyon Camp Map  
Naches Middle School

**Cow Canyon Camp Map  
Naches High School**

**Camping**

**Parking**

**Parking**



**Road  
Closed  
(GATE)**

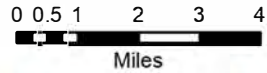
**4th Street**

**Naches  
Ave**

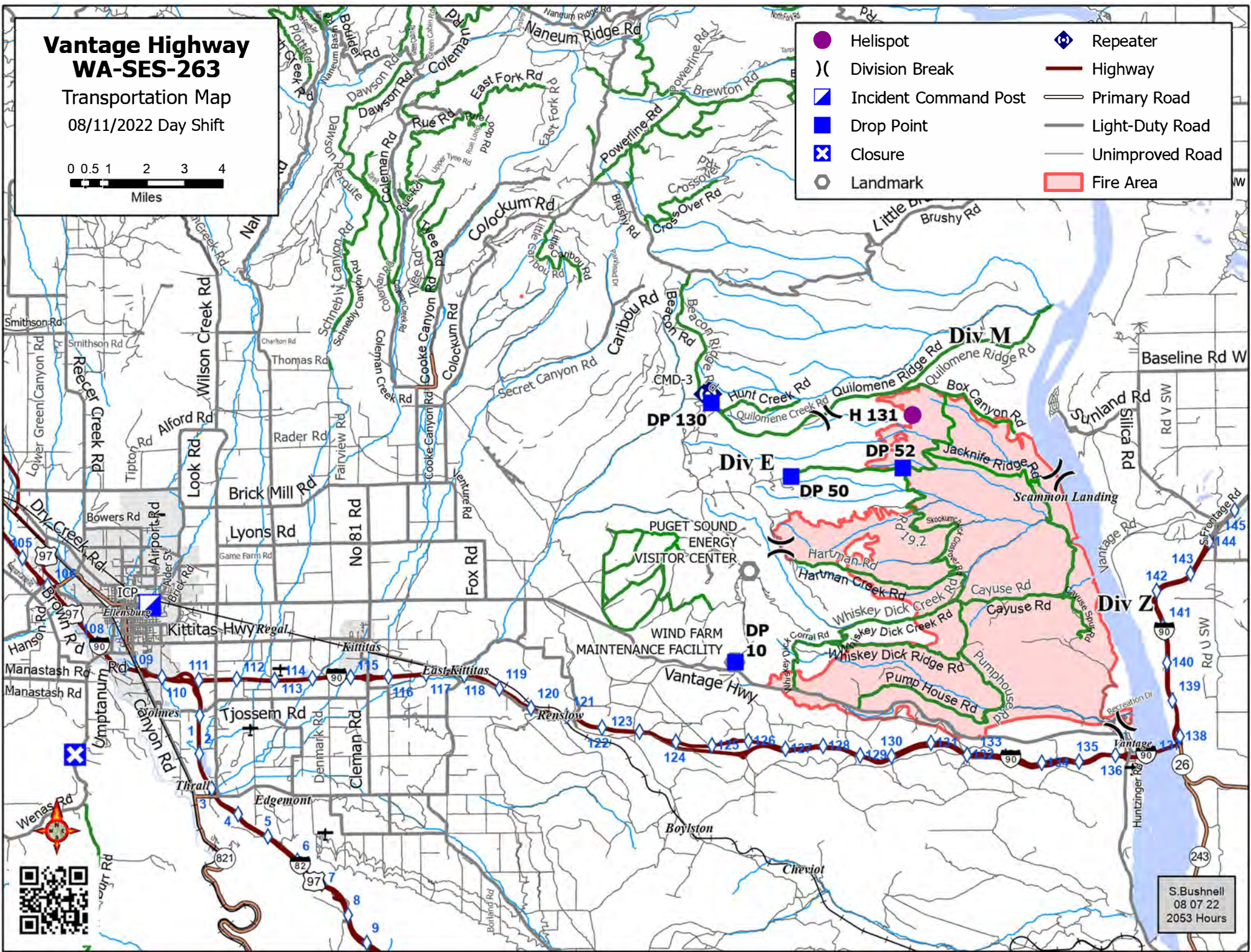


# Vantage Highway WA-SES-263

Transportation Map  
08/11/2022 Day Shift



- |                         |                   |
|-------------------------|-------------------|
| ● Helispot              | ◆ Repeater        |
| ) ( Division Break      | — Highway         |
| ▢ Incident Command Post | — Primary Road    |
| ■ Drop Point            | — Light-Duty Road |
| ⊗ Closure               | — Unimproved Road |
| ○ Landmark              | ■ Fire Area       |

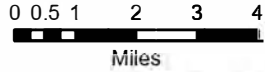


S. Bushnell  
08 07 22  
2053 Hours

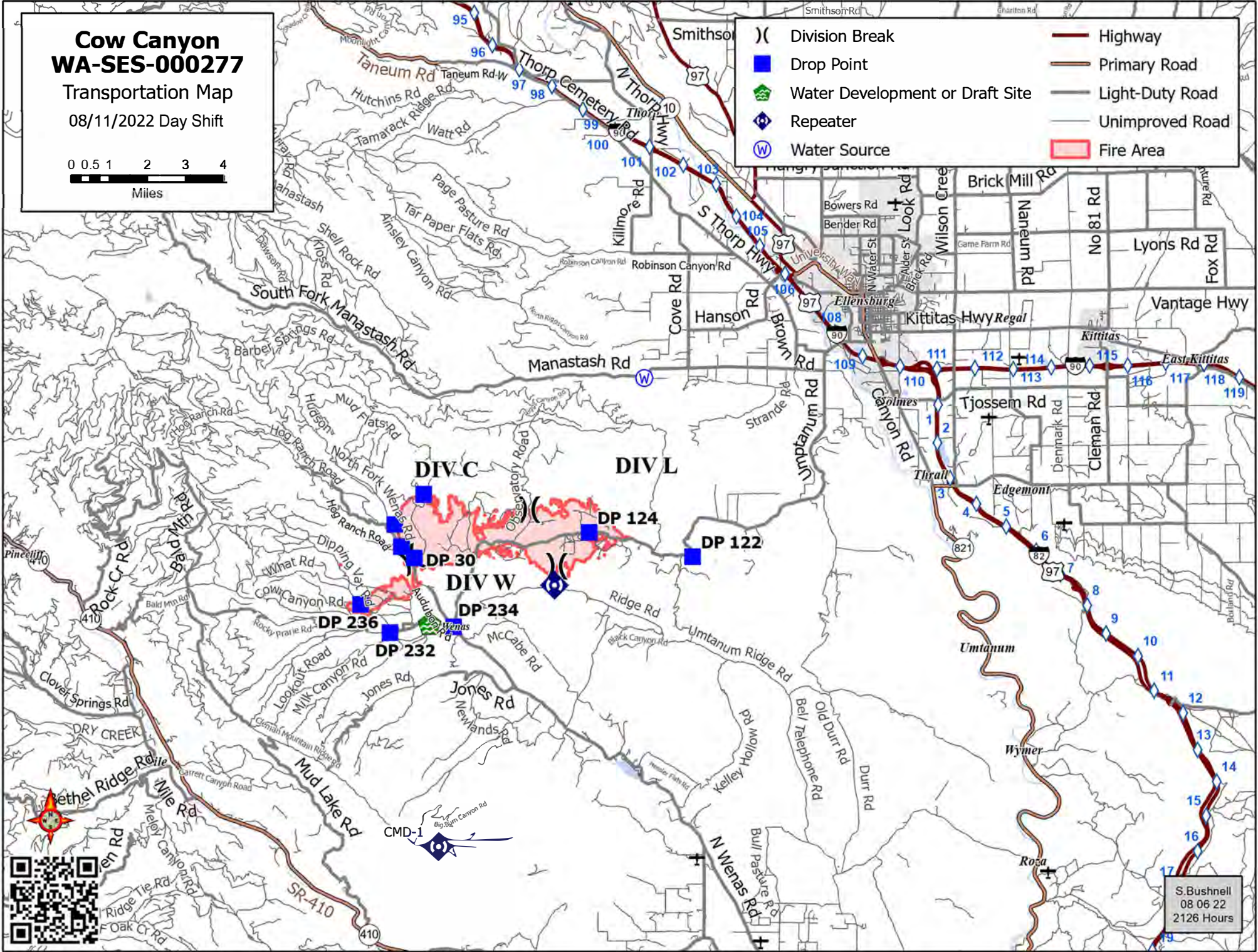
# Cow Canyon WA-SES-000277

Transportation Map

08/11/2022 Day Shift



- ( ) Division Break
- Drop Point
- 🌿 Water Development or Draft Site
- 📶 Repeater
- Ⓜ Water Source
- Highway
- Primary Road
- Light-Duty Road
- Unimproved Road
- 🔴 Fire Area



S. Bushnell  
08 06 22  
2126 Hours



# Vantage Highway WA-SES-263 IAP Map

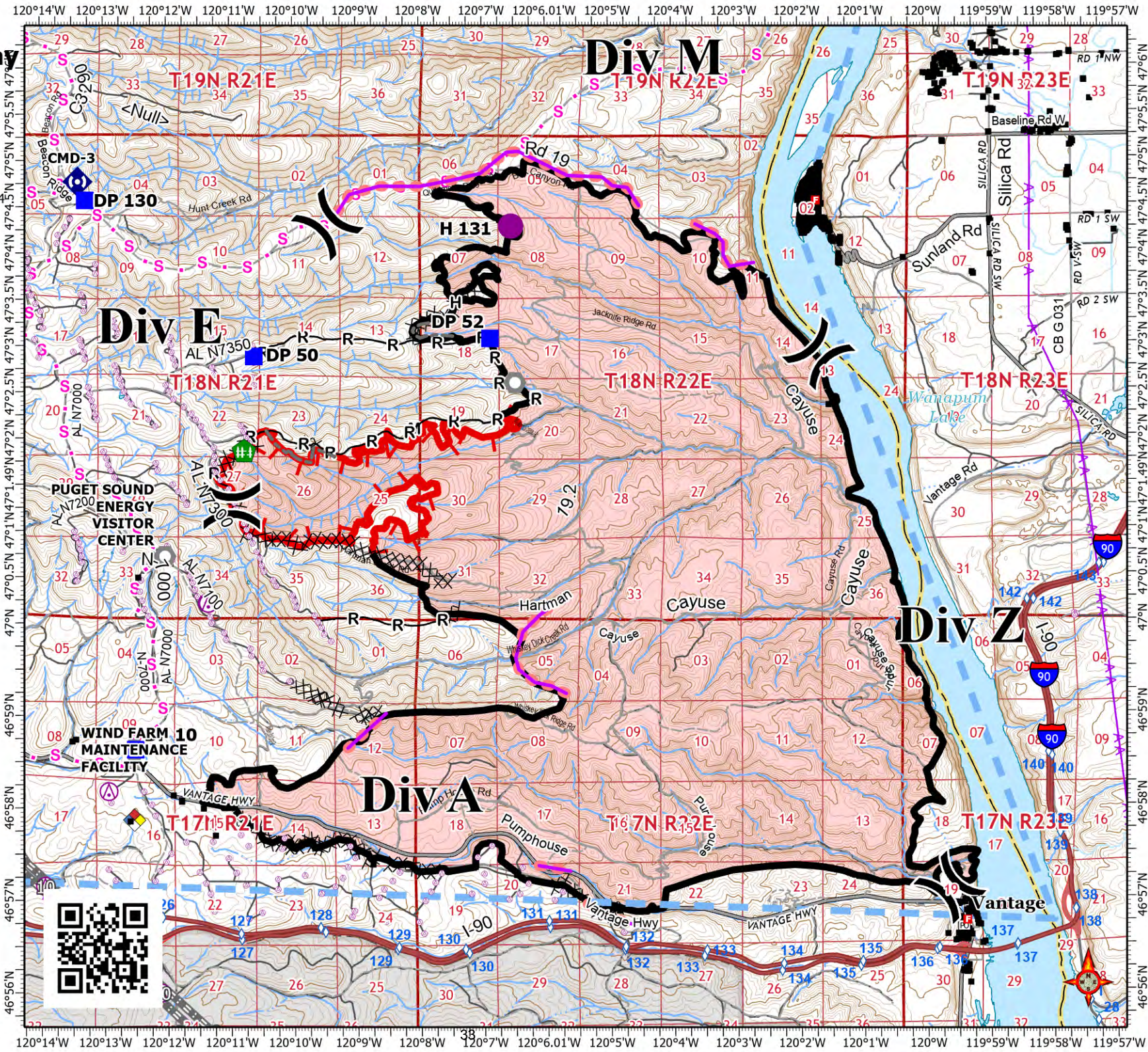
08/11/2022 Day Shift  
30,659 acres at 08/08/2022 @ 1754

- Helispot
- X Division Break
- Drop Point
- Landmark
- ◆ Fence - Cut/Damaged
- ◆ Repeater
- Structures
- ◆ Contaminated Site
- ⊗ Aerial Hazard
- XX Completed Dozer Line
- H Completed Hand Line
- M Completed Mixed Construction Line
- R Completed Road as Line
- S Planned Secondary Line
- Other
- ⊗ Retardant Drop
- Temporary Flight Restriction
- Contained
- Uncontained Fire Edge
- BPA Transmission Lines
- Utility Line
- Expressway
- Local Connector
- Local Road
- Ramp
- 4WD
- Trail
- County or Equivalent
- Department of Defense
- Fire Area



S. Bushnell  
08 10 22  
2026 Hours

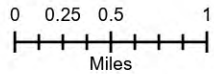
Acres from IR and SAT  
Datum: North American 1983 HARN



# Cow Canyon WA-SES-000277 IAP Map

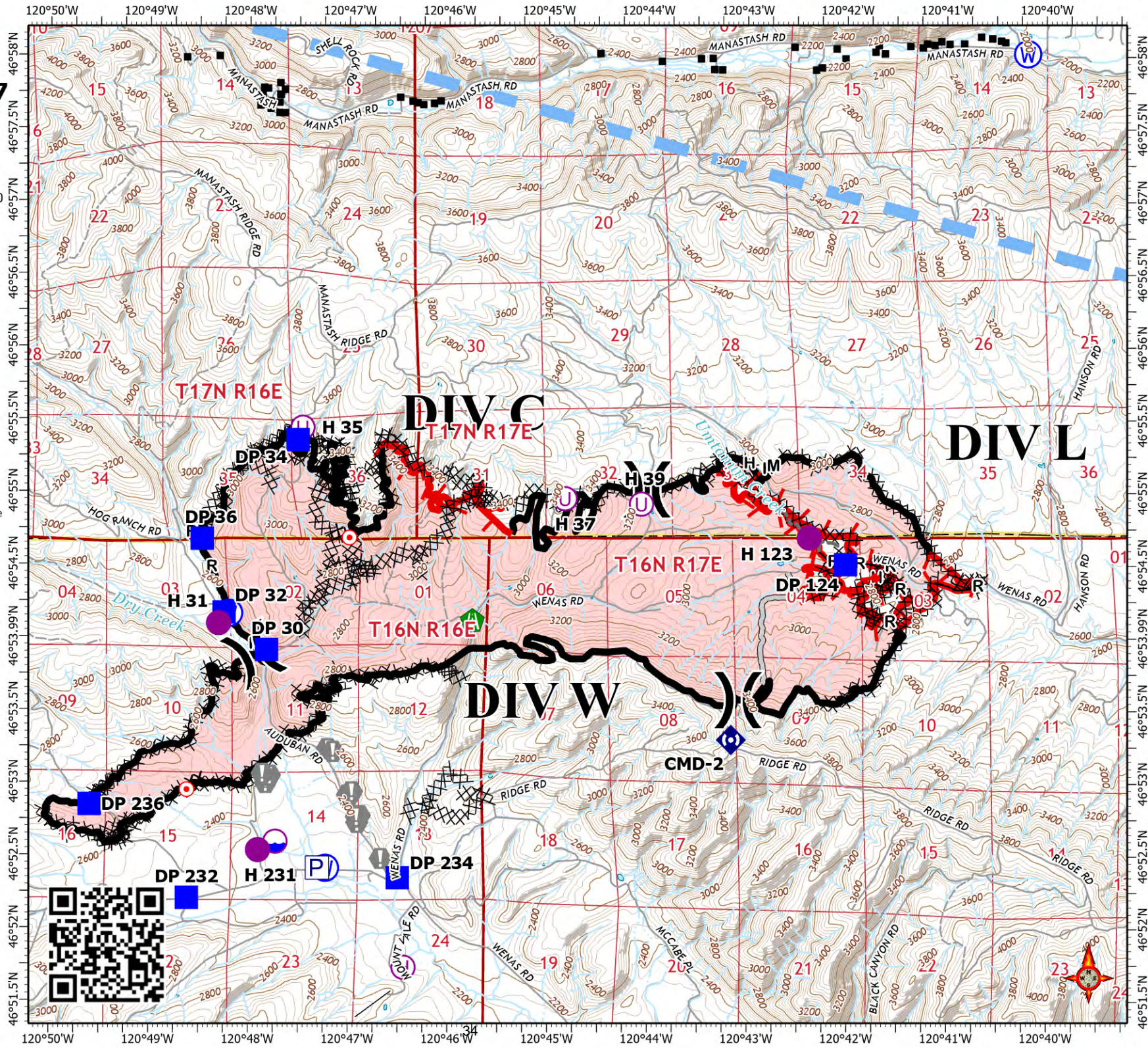
08/11/2022 Day Shift  
5832 acres at 08/08/2022 @ 2030

- Pump
- Dip Site
- Hellsport
- Helibase
- Unimproved Landing Area
- Division Break
- Drop Point
- Hot Spot - Spot Fire
- Value at Risk
- Water Development or Draft Site
- Road Repair
- Repeater
- Water Source
- Structures
- Completed Dozer Line
- Completed Hand Line
- Completed Mixed Construction Line
- Completed Road as Line
- Access or Improved Road
- Other
- Temporary Flight Restriction
- Fire Edge (Field Collection)
- Contained
- Uncontained Fire Edge
- Local Road
- 4WD
- State or Territory
- County or Equivalent
- Fire Area
- State
- Private



M. Tonkel  
08 10 22  
2047 Hours

Acres from IR and Sketch  
Datum: North American 1983 HARN



## Incident Maps

For incident maps scan the QR code on the cover of the IAP to open the 'Current Maps' folder. There are also general area transportation maps named large\_color\_wenas.pdf and large\_color\_whiskeydick\_quilomene.pdf.

### How to Download and Open Maps in Avenza

#### Method 1: From a browser

1. Tap on the desired map link and wait for the preview.  
*\* If it fails to load, use method 2 instead*
2. Tap the 'send to' icon (square with up arrow)
3. Choose the Avenza app

#### Method 2: From Avenza direct

1. Tap and hold on the desired map link, then choose 'copy' to copy the direct URL to the map
2. Launch the Avenza app
3. When not in any map... Tap the + (plus) icon at the top of the screen
4. Choose the load from URL option (last choice)
5. Paste the direct URL to the map
6. Tap 'Done' ; the map will begin downloading

### How to Send Map Updates to the Situation Unit

Send map updates by email to [2022.cowcanyon.situation@firenet.gov](mailto:2022.cowcanyon.situation@firenet.gov) or [2022.vantagehighway.situation@firenet.gov](mailto:2022.vantagehighway.situation@firenet.gov) or text/call the Situation Unit at 360-584-3373. Make sure to include your name, position and explanation of the update you send.

1. Open the map in Avenza.
2. Click the pin with three lines near the lower-right corner.
3. *iPhone:* In the lower right, click the square with up arrow. From the pop-up menu, choose Export to Others.  
*Android:* In the lower right, click the circle with three lines. Click the pop-up circle with up arrow.
4. Set these options:
  - a. Filename – leave alone
  - b. Export Format – choose SHP, GPX or KML
  - c. Data – all features
  - d. Image size – no image
5. Click the Export button in the upper-right corner.
6. When the export is ready, choose your Mail application.
7. Send the email to the addresses listed above.
8. Your email needs to include an explanation of the data you are sending.

If you don't have Avenza please draw corrections and new features on your paper map, take a picture of it and email or text it to the email or phone number listed above.

Thanks for your help!



## COVID-19 Mitigations for Cow Canyon/Vantage Road Fires

- Masks are not required indoors unless working in a county with a HIGH COVID-19 community level. Currently, Kittitas County community level is LOW and Yakima County is MEDIUM (masking indoors is optional).
- Conduct daily verbal screening checks within crews, report any COVID-like symptoms to your direct supervisor. Supervisors should report any positive symptoms to the Medical Unit for next steps.
- Observe social distancing standards while waiting in line for food and limit contact with others outside of your crew in the food service line. If possible, send crew representatives to pick up meals.
- Practice good personal hygiene, wash hands frequently and disinfect high-traffic areas on a regular basis.
- Limit close contact between firefighters and the public as much as possible to prevent exposure and spread.





# EMERGENCY PLAN INCIDENT WITHIN AN INCIDENT

## ON SCENE INCIDENT COMMANDER

In the event of an accident or medical incident of any size, your primary responsibility is to ENSURE that the victim(s) receive prompt and effective Triage, Treatment, Extrication and Transport.

- **ENSURE THE MEDICAL INCIDENT REPORT IN THE INCIDENT ACTION PLAN IS BEING USED AND FOLLOWED- \*IF DETERMINED TO BE A GREEN, DO NOT DECLARE EMERGENCY TRAFFIC AND ONLY COMPLETE LINE 1-4 ON MIR\*.**
- Conduct size-up of the incident nature of accident, number type of resources involved, latitude and longitude location (DD°MMM.MM format): notify incident communications center and supervisor, request assistance as needed.
- Order and coordinate medical and support response to the accident.
- Evaluate special needs (law enforcement, haz mat, etc.).
- Clear the command frequency if medical emergency, coordinate with incident communications and air attack for air medical transportation needs.
- Preserve and photograph the scene for accident investigation.
- Remain aware of surroundings and the status of the main incident (delegate personnel to monitor the main fire) to ensure safety of medical treatment personnel.
- Until relieved, supervise and manage all personnel involved at the incident scene.

# MEDICAL PLAN (ICS 206 WF)

<b>Incident/Project Name</b>		<b>1. Operational Period</b>					
<b>Vantage Highway</b>		<b>August 11<sup>th</sup>, 2022 0600-1800</b>					
<b>2. Ambulance Services</b>							
<b>Name</b>	<b>Complete Address</b>	<b>Phone</b>		<b>Advanced Life Support (ALS)</b>			
				Yes	No		
Kittitas Valley Fire & Rescue	400 E. Mt View. Ave. Ellensburg, WA 98926	911 (509) 933-7231		X			
<b>3. Air Ambulance Services</b>							
<b>Name</b>	<b>Phone</b>		<b>Location</b>				
Life Flight Network	800-232-0911		Moses Lake				
Airlift Northwest	800-426-2430 or 911		Wenatchee				
<b>4. Hospitals</b>							
<b>Name</b> <b>Complete Address</b>	<b>Coordinate Standard</b> Degrees Decimal Minutes DD° MM.MMM' N - Lat DD° MM.MMM' W - Long	<b>Travel Time</b> From Vanatge Air Gnd		<b>Phone</b>	<b>Helipad</b> Yes No		<b>Level</b> <b>of Care</b> <b>Facility</b>
Kittitas Valley Health 603 S Chestnut Ellensburg, WA 98926	Lat: 46° 59' 13.92" N	13 min	30 min	509-962-9841	X		Level 4 Trauma
	Long: 120° 32' 11.976" W						
Samaritan Healthcare 801 E Wheeler rd. Moses Lake, WA 98837	Lat: 47° 7' 43.212" N	22 Min	45 min	509-826-1760	X		Level 3 Trauma
	Long: 119° 15' 54.972" W						
Harborview Medical 325 9 <sup>th</sup> Ave Seattle, WA 98104	Lat: 47°36.1897' N	60 min	2 Hr	541-222-6929	X		Level 1 Trauma Burn Center
	Long: 122°19.4759' W						
<b>5. Division   Branch   Group</b>		<b>Capability</b>		<b>Personnel</b>			
<b>Div A/Z</b>				AMR Ambulance E-32			
<b>Div E/M</b>				Michael Schmidtgall O-27			
<b>Night</b>				911			
<b>6. Prepared By (Medical Unit Leader)</b>			<b>7. Date/Time</b>		<b>8. Reviewed By (Safety Officer)</b>		<b>9. Date/Time</b>
Lee Venning			08/10/2022 1800		Jack Cates <i>Jack Cates</i>		08/10/2022 1800

# MEDICAL PLAN (ICS 206 WF)

<b>Incident/Project Name</b>		<b>1. Operational Period</b>								
<h2>Cow Canyon Fire</h2>		<h3>August 11<sup>th</sup>, 2022</h3> <h3>0600-1800</h3>								
<b>2. Ambulance Services</b>										
<b>Name</b>	<b>Complete Address</b>	<b>Phone</b>		<b>Advanced Life Support (ALS)</b>						
				Yes	No					
Kittitas Valley Fire & Rescue (North)	400 E. Mt View. Ave. Ellensburg, WA 98926	911  (509) 933-7231		X						
Yakima AMR (South)	229 South 2nd Avenue Yakima, Washington 98902	911  (509) 453-6561		X						
<b>3. Air Ambulance Services</b>										
<b>Name</b>		<b>Phone</b>		<b>Location</b>						
Life Flight Network		800-232-0911		Moses Lake						
Airlift Northwest		800-426-2430 or 911		Wenatchee						
<b>4. Hospitals</b>										
<b>Name</b> <b>Complete Address</b>		<b>Coordinate Standard</b> Degrees Decimal Minutes DD° MM.MMM' N - Lat DD° MM.MMM' W - Long		<b>Travel Time</b> From Vanatge Air Gnd		<b>Phone</b>		<b>Helipad</b> Yes No		<b>Level of Care Facility</b>
Yakima Valley Memorial 2811 Tieton Dr Yakima, WA 98902		Lat:	46° 35' 37.68" N	13 min	30 min	509-575-8100	X		Level 3 Trauma	
Kittitas Valley Health 603 S Chestnut Ellensburg, WA 98926		Lat:	46° 59' 13.92" N	22 Min	45 min	509-962-9841	X		Level 4 Trauma	
Harborview Medical 325 9 <sup>th</sup> Ave Seattle, WA 98104		Lat:	47° 36.1897' N	60 min	2 Hr	541-222-6929	X		Level 1 Trauma Burn Center	
		Long:	122° 19.4759' W							
<b>5. Division   Branch   Group</b>		<b>Capability</b>			<b>Personnel</b>					
Div C		Beyond The Edge (BTE) REM O-31								
Div L		Protection 1 Ambulance E-30			Medic Wunsch O-44					
Div W		Clark-Cowlitz Ambulance E-29			Medic Wilson O-54					
Night		911								
<b>6. Prepared By (Medical Unit Leader)</b>				<b>7. Date/Time</b>		<b>8. Reviewed By (Safety Officer)</b>		<b>9. Date/Time</b>		
Lee Venning				08/10/2022 1800		Jack Cates <i>Jack Cates</i>		08/10/2022 1800		



# MEDICAL PLAN (ICS 206 WF)

Controlled Unclassified Information//Basic

## Medical Incident Report

**FOR A NON-EMERGENCY INCIDENT, WORK THROUGH CHAIN OF COMMAND TO REPORT AND TRANSPORT INJURED PERSONNEL AS NECESSARY.**

**FOR A MEDICAL EMERGENCY: IDENTIFY ON SCENE INCIDENT COMMANDER BY NAME AND POSITION AND ANNOUNCE "MEDICAL EMERGENCY" TO INITIATE RESPONSE FROM IMT COMMUNICATIONS/DISPATCH.**

Use the following items to communicate situation to communications/dispatch.

1. CONTACT COMMUNICATIONS / DISPATCH (**Verify correct frequency prior to starting report**)

*Ex: "Communications, Div. Alpha. Stand-by for Emergency Traffic."*

2. INCIDENT STATUS: *Provide incident summary (including number of patients) and command structure.*

*Ex: "Communications, I have a Red priority patient, unconscious, struck by a falling tree. Requesting air ambulance to Forest Road 1 at (Lat./Long.) This will be the Trout Meadow Medical, IC is TFLD Jones. EMT Smith is providing medical care."*

Severity of Emergency / Transport Priority	<input type="checkbox"/> RED / PRIORITY 1 Life or limb threatening injury or illness. Evacuation need is IMMEDIATE <i>Ex: Unconscious, difficulty breathing, bleeding severely, 2° – 3° burns more than 4 palm sizes, heat stroke, disoriented.</i> <input type="checkbox"/> YELLOW / PRIORITY 2 Serious Injury or illness. Evacuation may be DELAYED if necessary. <i>Ex: Significant trauma, unable to walk, 2° – 3° burns not more than 1-3 palm sizes.</i> <input type="checkbox"/> GREEN / PRIORITY 3 Minor Injury or illness. Non-Emergency transport <i>Ex: Sprains, strains, minor heat-related illness.</i>	
Nature of Injury or Illness & Mechanism of Injury		Brief Summary of Injury or Illness <i>(Ex: Unconscious, Struck by Falling Tree)</i>
Transport Request		Air Ambulance / Short Haul/Hoist Ground Ambulance / Other
Patient Location		Descriptive Location & Lat. / Long. (WGS84)
Incident Name		Geographic Name + "Medical" <i>(Ex: Trout Meadow Medical)</i>
On-Scene Incident Commander		Name of on-scene IC of Incident within an Incident <i>(Ex: TFLD Jones)</i>
Patient Care		Name of Care Provider <i>(Ex: EMT Smith)</i>

3. INITIAL PATIENT ASSESSMENT: *Complete this section for each patient as applicable (start with the most severe patient)*

Patient Assessment: See IRPG page 106

Treatment:

4. TRANSPORT PLAN:

Evacuation Location *(if different): (Descriptive Location (drop point, intersection, etc.) or Lat. / Long.)* Patient's ETA to Evacuation Location:

Helispot / Extraction Site Size and Hazards:

5. ADDITIONAL RESOURCES / EQUIPMENT NEEDS:

*Example: Paramedic/EMT, Crews, Immobilization Devices, AED, Oxygen, Trauma Bag, IV/Fluid(s), Splints, Rope rescue, Wheeled litter, HAZMAT, Extrication*

6. COMMUNICATIONS: Identify State Air/Ground EMS Frequencies and Hospital Contacts as applicable

Function	Channel Name/Number	Receive (RX)	Tone/NAC *	Transmit (TX)	Tone/NAC *
COMMAND					
AIR-TO-GRND					
TACTICAL					

7. CONTINGENCY: **Considerations:** *If primary options fail, what actions can be implemented in conjunction with primary evacuation method? Be thinking ahead.*

8. ADDITIONAL INFORMATION: *Updates/Changes, etc.*

**REMEMBER:** Confirm ETA's of resources ordered. Act according to your level of training. Be Alert. Keep Calm. Think Clearly. Act Decisively.

Controlled Unclassified Information//Basic