



## INCIDENT OBJECTIVES (ICS 202)

<b>1. Incident Name:</b>	<b>2. Operational Period: DAY</b>	
COW CANYON	Date/Time From: 08/12/2022 0600      FRI	Date/Time To: 08/14/2022 1800      SUN
<b>3. Objective(s):</b>		
<ul style="list-style-type: none"> <li>· Provide for firefighter and public safety using the Deliberate Risk Analysis process and implement reasonable mitigations for identified hazards.</li> <li>· Minimize impacts to communities, infrastructure, and acres burned on private lands.</li> <li>· Protect tribal, cultural, aquatic and wildlife resources, and sensitive plant sites.</li> <li>· Provide Initial Attack response and assistance for private and public lands within the delegated area.</li> <li>· Maintain and enhance relationships with cooperators, stake holders, landowners, and communities by providing accurate and timely information.</li> <li>· Manage cost commensurate with values at risk and maintain fiscal accountability.</li> <li>· Treat each other with dignity and respect and act in a professional manner while on the fire and in the community.</li> <li>· Ensure COVID-19 best management practices are in place and follow local CDC guidelines.</li> </ul>		
<b>4. Operational Period Command Emphasis:</b>		
Implement firefighting tactics to minimize fire growth with the greatest chance of success and the least amount of risk to firefighter and aviation resources as practical to meet incident objectives.		
<b>General Situational Awareness:</b>		
Fighting fire in light flashy fuels under hot, dry, and windy conditions poses great potential for rapid fire growth. Anticipate changes in fire behavior before it happens and ensure Lookouts, Communications, Escape Routes, and Safety Zones are adequate. Maintain accountability of all assigned resources while engaged on the fire line.		
<b>5. Site Safety Plan Required?</b> Yes <input type="checkbox"/> No <input checked="" type="checkbox"/>		
<b>Approved Site Safety Plan(s) Located</b>		
<b>6. Incident Action Plan</b> (the items checked below are included in this Incident Action Plan):		
<input type="checkbox"/> ICS 202 <input type="checkbox"/> ICS 203 <input type="checkbox"/> ICS 204 <input type="checkbox"/> ICS 205 <input type="checkbox"/> ICS 205A <input type="checkbox"/> ICS 206	<input type="checkbox"/> ICS 207 <input type="checkbox"/> ICS 208 <input type="checkbox"/> ICS 220 <input type="checkbox"/> Map/Chart <input type="checkbox"/> Weather Forecast/Tides/Currents	<b>Other Attachments:</b> <input type="checkbox"/> _____ <input type="checkbox"/> _____ <input type="checkbox"/> _____ <input type="checkbox"/> _____
<b>7. Prepared by:</b> JILL JOHNSON	<b>Position/Title:</b> RESL	<b>Signature:</b>
<b>8. Approved by Incident Commander:</b>	<b>Name:</b> KENT STANFORD	<b>Signature:</b>
<b>ICS 202</b>	<b>IAP Page</b>	<b>Date/Time:</b> 08/11/2022 1800

**Fire Weather Forecast**

**FORECAST NO:** 8  
**PREDICTION FOR:** Friday-Saturday-Sunday  
**Shift Date:** August 12-14 2022  
**TIME AND DATE**  
**FORECAST ISSUED:** 8/11/2022 at 1200

**INCIDENT:** Cow Canyon-Vantage Highway Fires  
**UNIT:** DNR  
**SIGNED:** Bob Tobin  
**Incident Meteorologist (IMET)**  
*Bob Tobin*

---

**Spot forecast are available and should be requested daily**  
To request a spot forecast use <https://www.weather.gov/spot/request/>  
The NWS Pendleton Fire Desk can be reached at 541 276-8134

**Weather Discussion:** The upper flow will become southwest on Friday and remain that way through the weekend. This will dry out the region and result in slightly cooler temperatures. A cold front will track across the region on Saturday morning. Temperatures will cool into the 70s and 80s with strong, gusty west-northwest wind. Temperatures should rebound a few degrees on Sunday with conditions remaining dry.

**WEATHER FORECAST:**

**Friday:**

**SKY/WEATHER:** Sunny.  
**High Temperature...**83-88 on Cow Canyon...94-99 on Vantage Highway.  
**Min RH.....**20-25% on Cow Canyon...18-22% on Vantage Highway.  
**20-FOOT WINDS:** Southeast-south 8-10 mph.  
**CWR (>=0.10")....**0%    **LAL....**1    **Haines Index...4** (Low)    **Mixing Height...**9500 ft AGL

**Saturday:**

**SKY/WEATHER:** Sunny. Cold front passage in the morning.  
**High Temperature...**72-77 on Cow Canyon...82-87 on Vantage Highway.  
**Min RH.....**30-35% on Cow Canyon...20-25% on Vantage Highway.  
**20-FOOT WINDS:** West-northwest 12-17 mph with gusts 20-25 mph.  
**CWR (>=0.10")....**0%    **LAL....**1    **Haines Index...3** ( Very Low)    **Mixing Height...**6000 ft AGL

**Sunday:**

**SKY/WEATHER:** Sunny. Not quite as cool.  
**High Temperature...**77-82 on Cow Canyon...86-90 on Vantage Highway.  
**Min RH.....**22-27% on Cow Canyon...16-20% on Vantage Highway.  
**20-FOOT WINDS:** Northeast-southeast 5-10 mph.  
**CWR (>=0.10")....**0%    **LAL....**1    **Haines Index...4** ( Low)    **Mixing Height...**6500 ft AGL

# FIRE BEHAVIOR FORECAST

FORECAST NUMBER: 8	TYPE OF FIRE: WILDFIRE
FIRE NAME: Cow Canyon, Vantage Highway	OPERATIONAL PERIOD: DAY SHIFT Aug. 12,13,14, 2022
DATE ISSUED: Aug. 11 2022	TIME ISSUED: 2000 HOURS
UNIT: SES	SIGNED: ___DON STRAND, FBAN_____

## INPUTS

**WEATHER SUMMARY:** See attached spot weather forecast.

**FUELS:** Cow Canyon - grass and brush with timber and brush stringers in draws with larger pockets of timber on northern aspects. Note-Fuel loading in grass fuels is much higher than recent years. Fuel moistures are dry with herbaceous estimated to be partially cured but dry enough to carry fire in most areas. Woody fuels are dry enough for fire spread.

Vantage Highway – Grass fuels are cured and brush fuels are mostly cured. Note- fuel loading in grass fuels is much higher than past years.

Adjacent fuels are very receptive to spots and any spot fires will initiate quickly and spread rapidly. If spotting occurs, it should be short range with max spotting distance near 0.3 miles

Energy Release Component for the area fires will range from 90<sup>th</sup> to 95<sup>th</sup> percentile.

## OUTPUTS

### FIRE BEHAVIOR

#### Friday:

Cow Canyon – expect isolated smoldering. A slight chance of flare ups exists in areas of dirty burns and unburned islands. Dozer berms may hold heat.

Vantage Highway – Continued patrol. Slight potential for smoldering fire behavior on edges of unburned islands where heavier fuel loading exists. Dozer and old road berms may have buried heat.

**Saturday: Note – Dry cold front passage with winds gusting to 30 mph.**

Cow Canyon - This will increase potential for flare ups in areas of dirty burns resulting increased chance of spotting. *Max spotting distance will increase and possibly exceed 0.7 miles.* Potential for blowing ash and dust. Fire weakened trees may be overhead hazards and could fall.

Vantage Highway – Slight potential for visible smokes to pop up in areas of dirty burns. Winds could contribute to flare ups and if within 1500 feet of perimeter, cause spots. Potential for blowing dust and ash.

**Sunday – Cow Canyon – Isolated smoldering.**

Vantage Highway – patrol.

**Initial Attack and Spot Fires:** Dead fuel moistures are very dry and will support rapid fire spread. Live fuel moistures are dry enough so shrubs and trees will contribute to fire spread with torching and as an excellent source for spotting. Any new start in light flashy fuels (grass/brush) can spread rapidly. Frontal winds could significantly increase fire spread with rates of spread far exceeding the speed fire fighters can travel.

**AIR OPERATIONS: Saturday – cold front winds will increase turbulence and may impact air operations**

Cold front passage with strong winds:

- Fire weakened trees may fall and become overhead hazards.
- Expect blowing dust and ash at times.
- High rates of spread likely on any new fire start.

During patrol and mop up, continue to watch footing near burned out stump holes and associated shallow roots.

Continue to monitor weather to help maintain Situational Awareness.

# Safety Message

12-14 August 2022

**INCIDENT: Cow Canyon**

**OPERATIONAL PERIOD: 0600-1800**

## TOPICS:

### **DRIVING**

Distance and varied road surfaces to and from the incident require focus and defensive driving skills by all vehicle operators. Passengers should assist during travel and while backing to help prevent accidents.

**With temperatures on the rise be sure to maintain hydration early and often!**

### **HYDRATION/NUTRITION**

- \* Drink fluids throughout operational period (water and Gatorade) not energy drinks
- \* Rotate crews out of smoky areas
- \* Follow work / rest guidelines
- \* Set a reasonable work pace and allow adequate rest breaks
- \* Use buddy system to monitor personnel of heat related and fatigue issues
- \* For Heat Related Injuries refer to IRPG pg.110
- \* Ensure adequate caloric intake.

### **HOW TO MAINTAIN FOCUS**

Focus is the thinking skill that allows people to begin a task without procrastination and then maintain their attention and effort until the task is complete. Focus helps people pay attention amid distractions and setbacks and to sustain the effort and energy needed to reach a goal. We all know focus can be hard to maintain when the task doesn't meet our motivation threshold.

Remember, the successful completion of the mission depends on every single person to maintain and perform. Lost focus equals lost productivity and a rise in risk!

**SAFETY OFFICER: Jack Cates, Taija Corso, Josh Northrup**

# Deliberate Risk Assessment-Hazard Summary

## 12-14 August 2022

Hazard	Mitigation	Post Risk
Extraction Time	Identify medivac sites and helispots. Initiate ground transport to accident site. Identify EMT's from resources assigned to division. Review IWI protocol to ensure familiarity.	High
Hazard Trees	Use avoidance to limit exposure time. Snag to avoid exposure. Use qualified fallers and blasting if needed. Conduct on- going risk analysis of all work areas. Follow Hazard Tree Safety Guidelines (IRPG page 20).	High
Aircraft	Utilize Air Attack. Ensure all resources are a safe distance from all bucket and retardant drops. Establish LCES. Utilize air to ground primary radio channel. Reference IRPG (Safe aircraft operations pg. 61). Ensure IA resources have coordination with unassigned local air resources to provide deconfliction.	High
Transportation	Signing of all incident roads that provide access to divisions. Practice defensive driving. In local communities obey the posted speed limits. Identify and evaluate contingency and alternate escape and travel routes, implement controls as needed.	High
Public Interaction	Implement road and area closures in and adjacent to the perimeter as needed.	Moderate
Unburned Fuels	Establish LCES. Ensure management action points are implemented and followed. Weather updates as needed during burning operations.	Moderate
Steep Terrain/Gravity	Do not work crews above or below each other. Post lookouts for rolling material. Watch footing in loose soil, rock and around vegetation. Scout and identify travel routes. Establish LCES.	Moderate
Physical Factors	Maintain hydration schedule. Closely monitor work rate and implement rest periods. Maintain nutrition. Ensure adequate work/rest.	Moderate
Environmental Factors	Assess for known allergies and report to medical personnel. Obtain Bee Bopper/wasp spray and yellow jacket traps.	Moderate
Fire Behavior	Be aware of burn windows, min/max RH for local conditions. Obtain hourly weather conditions from each Division.	Moderate
Structure Protection	Identify and report compromised service poles and maintain one span avoidance area. Identify downed lines. Treat all lines as live. Identify and avoid vehicles, tires, propane tanks.	Moderate
Initial Attack	Ensure identified IA resources are briefed of expectations and ensure communication plan is provided. Ensure resources are briefed on IA command structure. Provide identified crews with area maps.	Low
COVID Viral Transmission	Maintain awareness of health and perform self-checks. Report and isolate if symptomatic. Coordinate with Kittitas County Public Health for testing, reporting and isolation as needed. <b>Follow agency policy for symptomatic or positive test personnel or public health directions, whichever is more stringent.</b>	Low

**Division/Group Assignment List (ICS 204 WF)**  
**Controlled Unclassified Information//Basic**

<b>1. Incident Name:</b>			<b>3.</b>			
COW CANYON			<b>Branch:</b>	<b>Division/Group</b>		
<b>2. Operational Period: DAY</b>						
Date/Time From: 08/12/2022 0600	FRI	Date/Time To: 08/14/2022 1800	SUN		<b>C/L/W</b>	
<b>4. Operations Personnel</b>						
<b>ICT4</b>	O-57 KENT STANFORD					
<b>5. Resources Assigned this Period</b>						
<b>Strike Team / Task Force / Resource Designator</b>	<b>LWD</b>	<b>Leader</b>	<b>Number Persons</b>	<b>Drop Off PT./Time</b>	<b>Pick Up PT./Time</b>	
O-53 TFLD	08/15	RICH WALLMOW	1	NACHES/0600	NACHES/1800	
O-9 HEQB (T)	08/14	ANDREW NAUGHTON	1	NACHES/0600	NACHES/1800	
C-2 CRW2 DNR CASCADE	08/16	JOHN MOON	20	NACHES/0600	NACHES/1800	
DNR STRIKE TEAM						
O-50 TFLD	08/14	MATHEW CALDWELL	1	NACHES/0600	NACHES/1800	
O-51 TFLD (T)	08/14	BRIAN WILLIAMS	1	NACHES/0600	NACHES/1800	
E-55 ENG5 DNR E5102	08/14	IRIS BANKS	4	NACHES/0600	NACHES/1800	
E-56 ENG5 DNR E5105	08/14	LUKE ACORN	4	NACHES/0600	NACHES/1800	
E-57 ENG5 DNR E5201	08/14	ISAAC DUGGER	4	NACHES/0600	NACHES/1800	
E-58 ENG5 DNR E8262	08/14	MARTIN FERRELL	3	NACHES/0600	NACHES/1800	
E-59 ENG5 DNR E2406	08/14	MATHEW SABIN	3	NACHES/0600	NACHES/1800	
NW STRIKE TEAM						
O-91 STEN	08/13	JOTHAN MCGAUGHEY	1	NACHES/0600	NACHES/1800	
O-90 STEN (T)	08/13	TRANTON CROSSLAND	1	NACHES/0600	NACHES/1800	
E-87 ENG5 DNR NWS E5204	08/13	CAMRON ANDERSON	4	NACHES/0600	NACHES/1800	
E-88 ENG5 DNR PCS E2301	08/13	TREY HARTLEY	3	NACHES/0600	NACHES/1800	
E-89 ENG5 DNR PCS E2205	08/13	THOMAS TANGEN	4	NACHES/0600	NACHES/1800	
E-90 ENG5 DNR PCS E1201	08/13	FILIPE BARRAGAN	5	NACHES/0600	NACHES/1800	
E-91 ENG5 DNR OLS E1301	08/13	JEFF HAPPE	5	NACHES/0600	NACHES/1800	
<b>8. Division/Group Communication Summary</b>						
<b>Function</b>	<b>Channel</b>	<b>RX Frequency N/W</b>	<b>RX Tone/NAC</b>	<b>TX Frequency N/W</b>	<b>TX Tone/NAC</b>	<b>Mode</b>
COMMAND						
TACTICAL	See Communication Plan					
LOGISTICS						
AIR TO GROUND						
<b>9. Prepared By (Resource Unit Leader)</b>		<b>Approved By (Planning Section Chief)</b>		<b>Date</b>	<b>Time</b>	
JILL JOHNSON		KENT STANFORD		08/11/2022	1800	

**Division/Group Assignment List (ICS 204 WF)**  
**Controlled Unclassified Information//Basic**

<b>1. Incident Name:</b>			<b>3.</b>			
COW CANYON			<b>Branch:</b>	<b>Division/Group</b>  C/L/W		
<b>2. Operational Period: DAY</b>						
Date/Time From: 08/12/2022 0600	FRI	Date/Time To: 08/14/2022 1800	SUN			
<b>4. Operations Personnel</b>						
<b>ICT4</b>	O-57 KENT STANFORD					
<b>5. Resources Assigned this Period</b>						
Strike Team / Task Force / Resource Designator	LWD	Leader	Number Persons	Drop Off PT./Time	Pick Up PT./Time	
E-45 WTS2 RIDGE TOP IRON (6WD) **	08/20	TIM WHITEHURST	1	NACHES/0600	NACHES/1800	
E-15 DZR3 DUKES EQUIPMENT	08/14	STEVEN HALEY	2	NACHES/0600	NACHES/1800	
E-17 DZR4 BADGER DIRTWORKS **	08/17	KYLE MARTIN	2	NACHES/0600	NACHES/1800	
<b>6. Control Operations/Work Assignments:</b>						
<p>TASK: Secure and mop up fireline to turn back specifications.  PURPOSE: Contain fire edge and prevent fire spread.  END STATE: Fire is contained to current footprint.</p>						
<b>7. Special Instructions:</b>						
<b>8. Division/Group Communication Summary</b>						
Function	Channel	RX Frequency N/W	RX Tone/NAC	TX Frequency N/W	TX Tone/NAC	Mode
COMMAND						
TACTICAL		See Communication Plan				
LOGISTICS						
AIR TO GROUND						
<b>9. Prepared By (Resource Unit Leader)</b>		<b>Approved By (Planning Section Chief)</b>		<b>Date</b>	<b>Time</b>	
JILL JOHNSON		KENT STANFORD		08/11/2022	1800	



INCIDENT RADIO COMMUNICATIONS PLAN		1. Incident Name			2. Date/ Time Prepared		3. Operational Period Date/Time	
		COW CANYON - TYPE 4			8/11/2022		AS NEEDED	
4. Basic Radio Channel Utilization								
Mode: W=Wideband Analog, N=Narrowband Analog, D=Digital, M=Mixed								
Channel	Function	Frequency		Tone	Mode	Name	Remarks	
1	TACTICAL	RX:	151.4150	103.5	N	DNR COM	DNR STATEWIDE	
		TX:	151.4150	103.5				
2	AIR OPS	RX:	159.2700	103.5	N	DNR A/G 1	DNR AIR TO GROUND PRIMARY	
		TX:	159.2700	103.5				
3	AIR OPS	RX:	151.2875	103.5	N	DNR A/G 2	DNR AIR TO GROUND SECONDARY	
		TX:	151.2875	103.5				
4	REPEATER	RX:	159.2550	107.2	N	SEEDGE	SEEDGE RIDGE - AHTANUM	
		TX:	151.1825	107.2				
5	REPEATER	RX:	159.3450	114.8	N	DNR CLEM	CLEMAN MTN - WEST OF NACHES	
		TX:	151.4675	114.8				
6	TACTICAL	RX:	151.3100	103.5	N	DNR TAC 1	DNR STATEWIDE	
		TX:	151.3100	103.5				
7	TACTICAL	RX:	151.3400	103.5	N	DNR TAC 2	DNR STATEWIDE	
		TX:	151.3400	103.5				
8	REPEATER	RX:	154.2575	91.5	N	UV MAIN	YAKIMA CO. FIRE	
		TX:	158.9175	91.5				
9	TACTICAL	RX:	153.8750		N	UV GOLD	YAKIMA CO. FIRE	
		TX:	153.8750					
10	TACTICAL	RX:	154.2800		N	UV SILV	YAKIMA CO. FIRE	
		TX:	154.2800					
11	TACTICAL	RX:	153.8300		N	WA REDNT	WA FIRE MARSHALL	
		TX:	153.8300					
12	TACTICAL		168.2000		N	FS TAC	USFS	
			168.2000					
13	TACTICAL	RX:	168.6750		N	WEN PROJ	USFS	
		TX:	168.6750					
14	REPEATER	RX:	171.5000	123.0	N	FS LBALD	USFS - LIL BALD MTN	
		TX:	168.7500	167.9				
15	REPEATER	RX:	171.5000	123.0	N	FS CLEM	USFS - CLEMAN MTN - WEST OF NACHES	
		TX:	168.7500	179.9				
16	REPEATER	RX:	169.6750	100.0	N	SELAH	BLM - SELAH BUTTE	
		TX:	164.0875	131.8				
5. Prepared by (Communications Unit)								
MISSY PARKER, STS/COML DNR SE REGION								



## HUMAN RESOURCE MESSAGE

### Cow Canyon

It is important for everyone to work together cooperatively and respectfully throughout this fire assignment. The Agency has a responsibility to provide a harassment free work environment however, employees have a responsibility as well to do what is right and treat each other with dignity and respect. Good communication and teamwork go together and it is everyone's responsibility to maintain a positive working environment.

As a reminder, there is zero tolerance for the possession or use of illegal drugs or alcohol. That also holds true for any type of harassment. If you see something, say something because this type of inappropriate behavior hurts the individual(s) and the agency and it is never okay.

Having fun and goofing around can easily get out of hand when personnel are fatigued or stressed. Remember safety is foremost in everything we do and it is both an individual and a team responsibility to ensure safety standards are followed.

Take the lead, be professional, and keep in mind our core values of duty, respect, and integrity. Stay focused on the task, keep team members informed, respectively share your viewpoint, listen to what others are saying, provide feedback, and be sure to ask questions if you are unsure of any assignment.

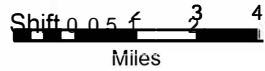
**Be safe out there and have a good day!**



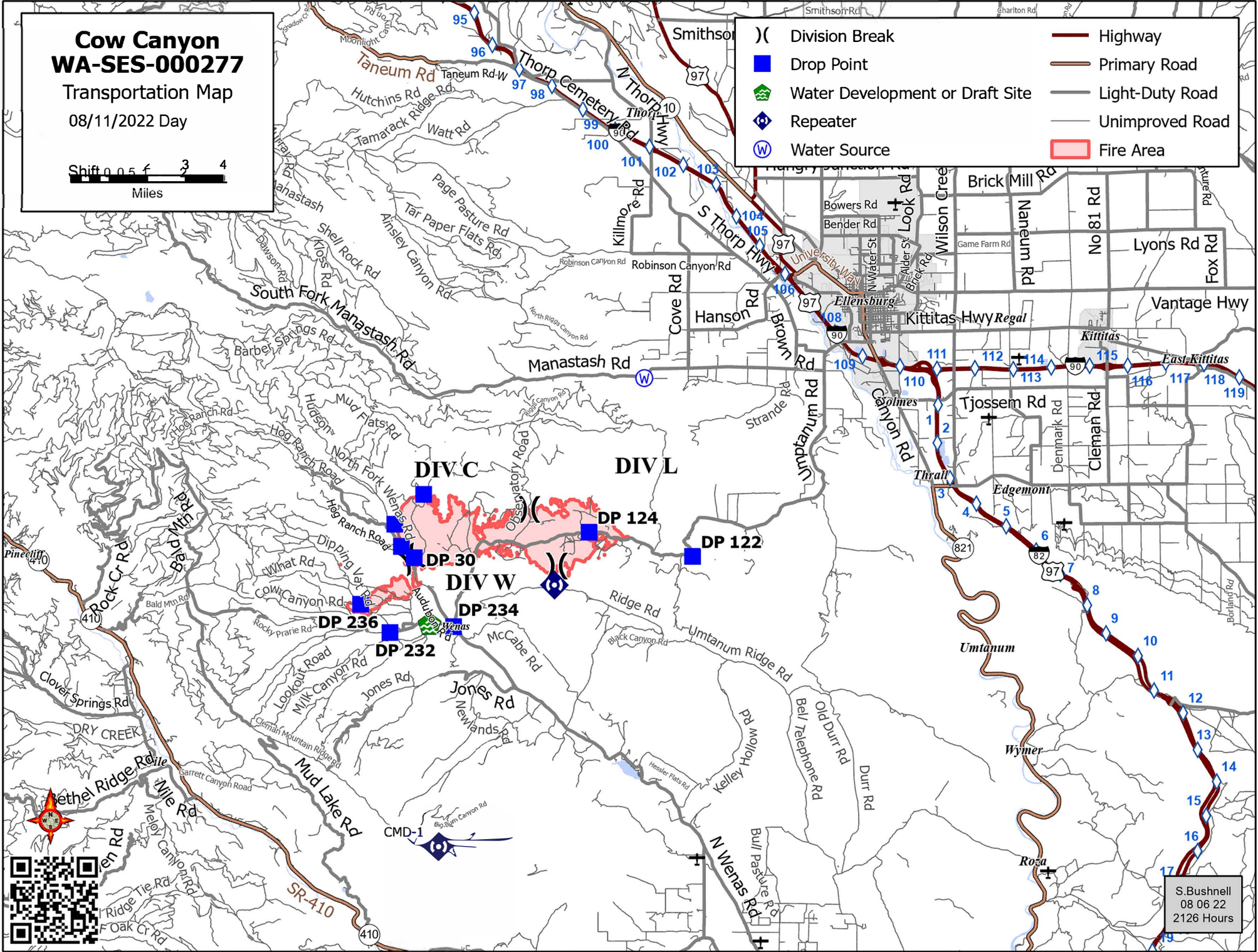
# Cow Canyon WA-SES-000277

Transportation Map

08/11/2022 Day



- ( ) Division Break
- Drop Point
- 🌿 Water Development or Draft Site
- 📶 Repeater
- 📶 Water Source
- Highway
- Primary Road
- Light-Duty Road
- Unimproved Road
- 🔴 Fire Area



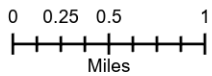
S. Bushnell  
08 06 22  
2126 Hours



# Cow Canyon WA-SES-000277 IAP Map

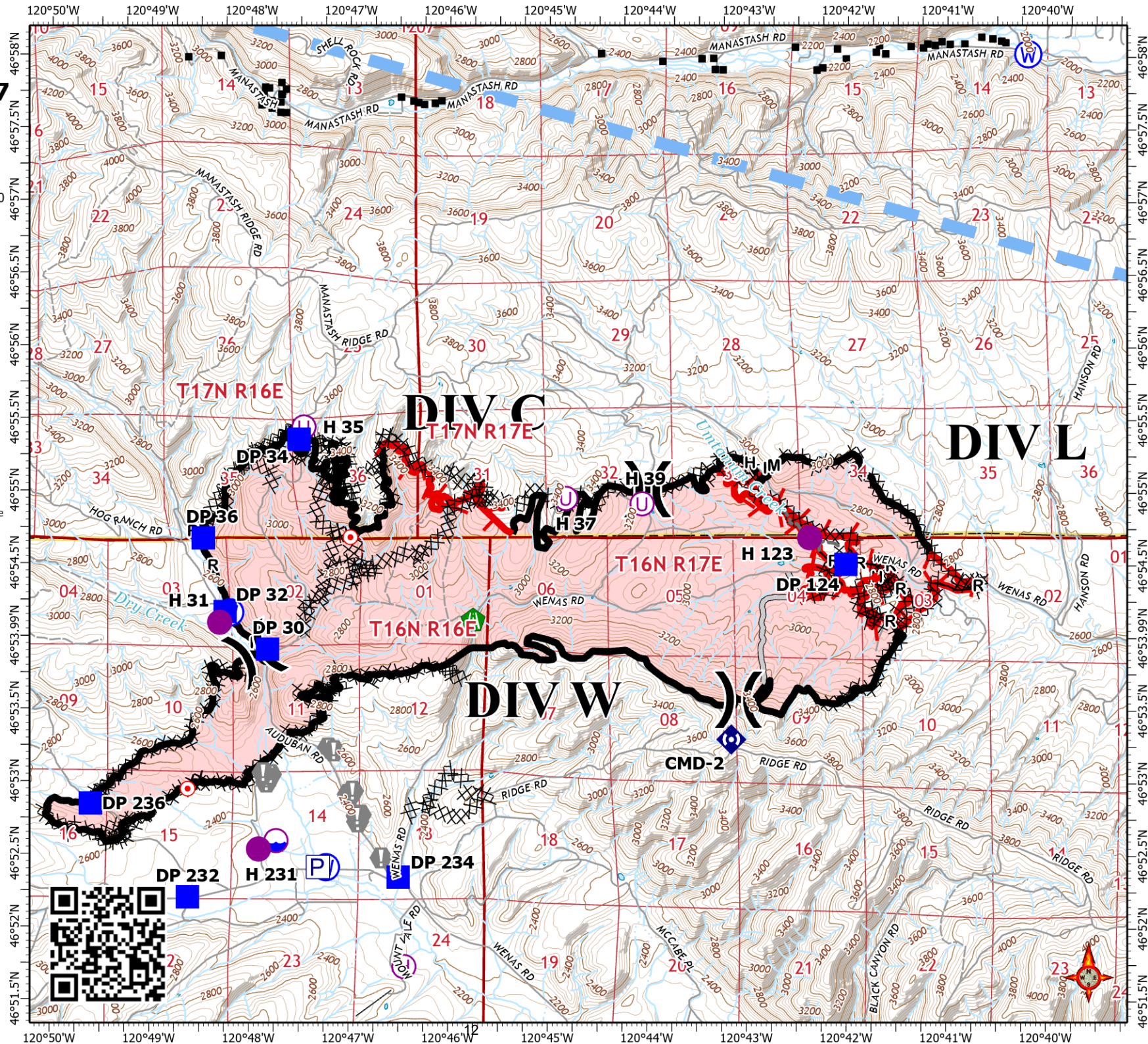
08/11/2022 Day Shift  
5832 acres at 08/08/2022 @ 2030

- Pump
- Dip Site
- Hellsport
- Helibase
- Unimproved Landing Area
- Division Break
- Drop Point
- Hot Spot - Spot Fire
- Value at Risk
- Water Development or Draft Site
- Road Repair
- Repeater
- Water Source
- Structures
- Completed Dozer Line
- Completed Hand Line
- Completed Mixed Construction Line
- Completed Road as Line
- Access or Improved Road
- Other
- Temporary Flight Restriction
- Fire Edge (Field Collection)
- Contained
- Uncontained Fire Edge
- Local Road
- 4WD
- State or Territory
- County or Equivalent
- Fire Area
- State
- Private



M. Tonkel  
08 10 22  
2047 Hours

Acres from IR and Sketch  
Datum: North American 1983 HARN





<b>UNIT LOG</b>	1. Incident Name	2. Date Prepared	3. Time Prepared
4. Unit Name/Designators	5. Unit Leader (Name and Position)	6. Operational Period	
<b>7. Personnel Roster Assigned</b>			
Name	ICS Position	Home Base	
<b>8. Activity Log</b>			
Time	Major Events		
9. Prepared by (Name and Position)			

# MEDICAL PLAN (ICS 206 WF)

Incident/Project Name		1. Operational Period						
<b>Cow Canyon Fire</b>		<b>August 12-14, 2022 0600-1800</b>						
2. Ambulance Services								
Name	Complete Address	Phone		Advanced Life Support (ALS)				
		Yes	No					
Kittitas Valley Fire & Rescue (North)	400 E. Mt View. Ave. Ellensburg, WA 98926	911  (509) 933-7231		X				
Yakima AMR (South)	229 South 2nd Avenue Yakima, Washington 98902	911  (509) 453-6561		X				
3. Air Ambulance Services								
Name	Phone	Location						
Life Flight Network	800-232-0911	Moses Lake						
Airlift Northwest	800-426-2430 or 911	Wenatchee						
4. Hospitals								
Name Complete Address	Coordinate Standard Degrees Decimal Minutes DD° MM.MMM' N - Lat DD° MM.MMM' W - Long		Travel Time From Vanatge		Phone	Helipad		Level of Care Facility
	Lat:	Long:	Air	Gnd		Yes	No	
Yakima Valley Memorial 2811 Tieton Dr Yakima, WA 98902	46° 35' 37.68" N	120° 32' 51.972" W	13 min	30 min	509-575-8100	X		Level 3 Trauma
Kittitas Valley Health 603 S Chestnut Ellensburg, WA 98926	46° 59' 13.92" N	120° 32' 11.976" W	22 Min	45 min	509-962-9841	X		Level 4 Trauma
Harborview Medical 325 9 <sup>th</sup> Ave Seattle, WA 98104	47° 36.1897' N	122° 19.4759' W	60 min	2 Hr	541-222-6929	X		Level 1 Trauma Burn Center
5. Division   Branch   Group	Capability			Personnel				
<b>Div C</b>				911				
<b>Div L</b>				911				
<b>Div W</b>				911				
<b>Night</b>				911				
6. Prepared By (Medical Unit Leader)			7. Date/Time		8. Reviewed By (Safety Officer)		9. Date/Time	
Eamonn Ryan, NW Team 12			08/11/2022 1800				08/11/2022 1800	

# MEDICAL PLAN (ICS 206 WF)

Controlled Unclassified Information//Basic

## Medical Incident Report

**FOR A NON-EMERGENCY INCIDENT, WORK THROUGH CHAIN OF COMMAND TO REPORT AND TRANSPORT INJURED PERSONNEL AS NECESSARY.**

**FOR A MEDICAL EMERGENCY: IDENTIFY ON SCENE INCIDENT COMMANDER BY NAME AND POSITION AND ANNOUNCE "MEDICAL EMERGENCY" TO INITIATE RESPONSE FROM IMT COMMUNICATIONS/DISPATCH.**

Use the following items to communicate situation to communications/dispatch.

**1. CONTACT COMMUNICATIONS / DISPATCH (Verify correct frequency prior to starting report)**

*Ex: "Communications, Div. Alpha. Stand-by for Emergency Traffic."*

**2. INCIDENT STATUS: Provide incident summary (including number of patients) and command structure.**

*Ex: "Communications, I have a Red priority patient, unconscious, struck by a falling tree. Requesting air ambulance to Forest Road 1 at (Lat./Long.) This will be the Trout Meadow Medical, IC is TFLD Jones. EMT Smith is providing medical care."*

Severity of Emergency / Transport Priority	<input type="checkbox"/> RED / PRIORITY 1 Life or limb threatening injury or illness. Evacuation need is IMMEDIATE <i>Ex: Unconscious, difficulty breathing, bleeding severely, 2° – 3° burns more than 4 palm sizes, heat stroke, disoriented.</i> <input type="checkbox"/> YELLOW / PRIORITY 2 Serious Injury or illness. Evacuation may be DELAYED if necessary. <i>Ex: Significant trauma, unable to walk, 2° – 3° burns not more than 1-3 palm sizes.</i> <input type="checkbox"/> GREEN / PRIORITY 3 Minor Injury or illness. Non-Emergency transport <i>Ex: Sprains, strains, minor heat-related illness.</i>	
Nature of Injury or Illness & Mechanism of Injury		<i>Brief Summary of Injury or Illness (Ex: Unconscious, Struck by Falling Tree)</i>
Transport Request		<i>Air Ambulance / Short Haul/Hoist Ground Ambulance / Other</i>
Patient Location		<i>Descriptive Location &amp; Lat. / Long. (WGS84)</i>
Incident Name		<i>Geographic Name + "Medical" (Ex: Trout Meadow Medical)</i>
On-Scene Incident Commander		<i>Name of on-scene IC of Incident within an Incident (Ex: TFLD Jones)</i>
Patient Care		<i>Name of Care Provider (Ex: EMT Smith)</i>

**3. INITIAL PATIENT ASSESSMENT: Complete this section for each patient as applicable (start with the most severe patient)**

Patient Assessment: See IRPG page 106

Treatment:

**4. TRANSPORT PLAN:**

Evacuation Location (if different): (Descriptive Location (drop point, intersection, etc.) or Lat. / Long.) Patient's ETA to Evacuation Location:

Helispot / Extraction Site Size and Hazards:

**5. ADDITIONAL RESOURCES / EQUIPMENT NEEDS:**

*Example: Paramedic/EMT, Crews, Immobilization Devices, AED, Oxygen, Trauma Bag, IV/Fluid(s), Splints, Rope rescue, Wheeled litter, HAZMAT, Extrication*

**6. COMMUNICATIONS: Identify State Air/Ground EMS Frequencies and Hospital Contacts as applicable**

Function	Channel Name/Number	Receive (RX)	Tone/NAC *	Transmit (TX)	Tone/NAC *
COMMAND					
AIR-TO-GRND					
TACTICAL					

**7. CONTINGENCY: Considerations: If primary options fail, what actions can be implemented in conjunction with primary evacuation method? Be thinking ahead.**

**8. ADDITIONAL INFORMATION: Updates/Changes, etc.**

**REMEMBER:** Confirm ETA's of resources ordered. Act according to your level of training. Be Alert. Keep Calm. Think Clearly. Act Decisively.

Controlled Unclassified Information//Basic