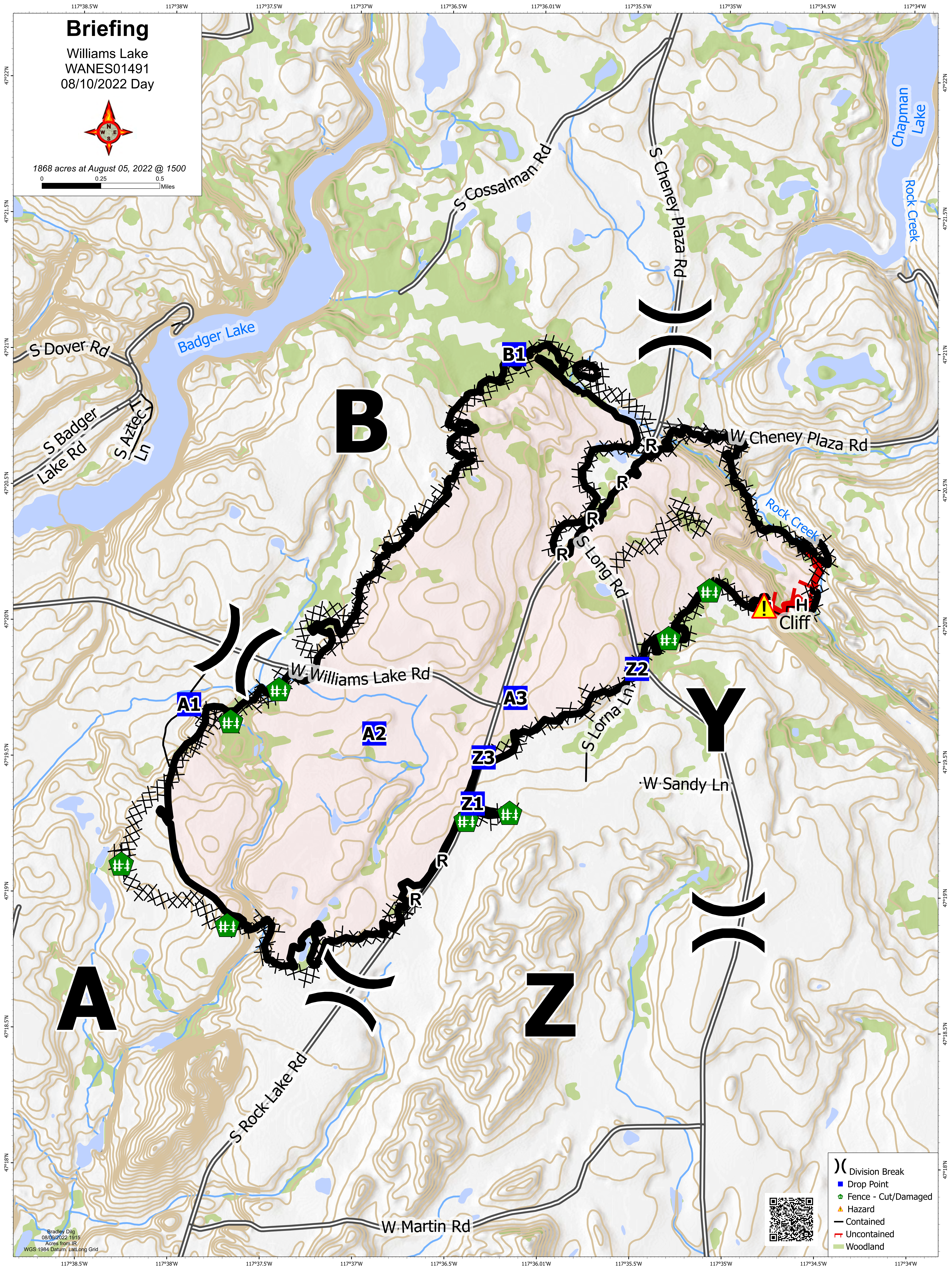
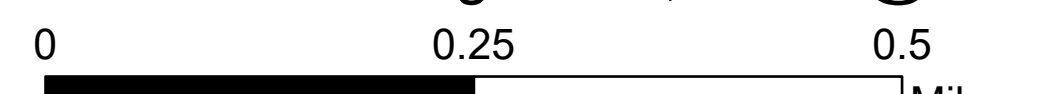


Briefing

Williams Lake
WANES01491
08/10/2022 Day



1868 acres at August 05, 2022 @ 1500



- Division Break
- Drop Point
- Fence - Cut/Damaged
- Hazard
- Contained
- Uncontained
- Woodland



Bradley Dilg
08/09/2022 1915
Acres from IR
WGS 1984 Datum/ LatLong Grid