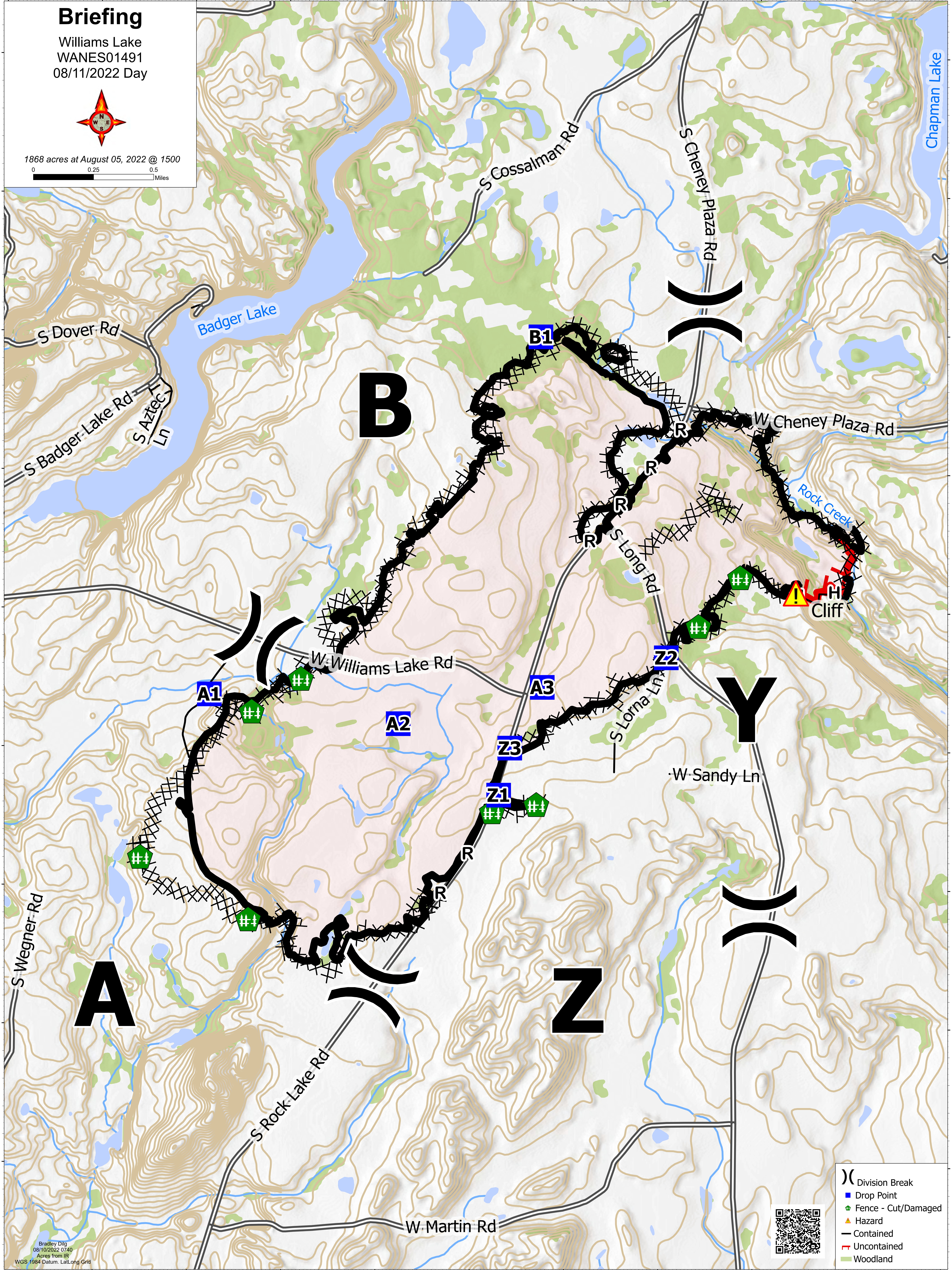
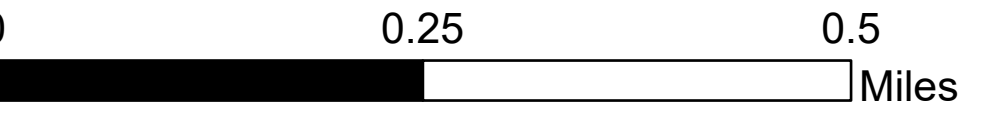


# Briefing

Williams Lake  
WANES01491  
08/11/2022 Day



1868 acres at August 05, 2022 @ 1500



- Division Break
- Drop Point
- Fence - Cut/Damaged
- Hazard
- Contained
- Uncontained
- Woodland

Bradley Dig  
08/10/2022 0740  
Acres from IR  
WGS 1984 Datum, Lat/Long Grid