

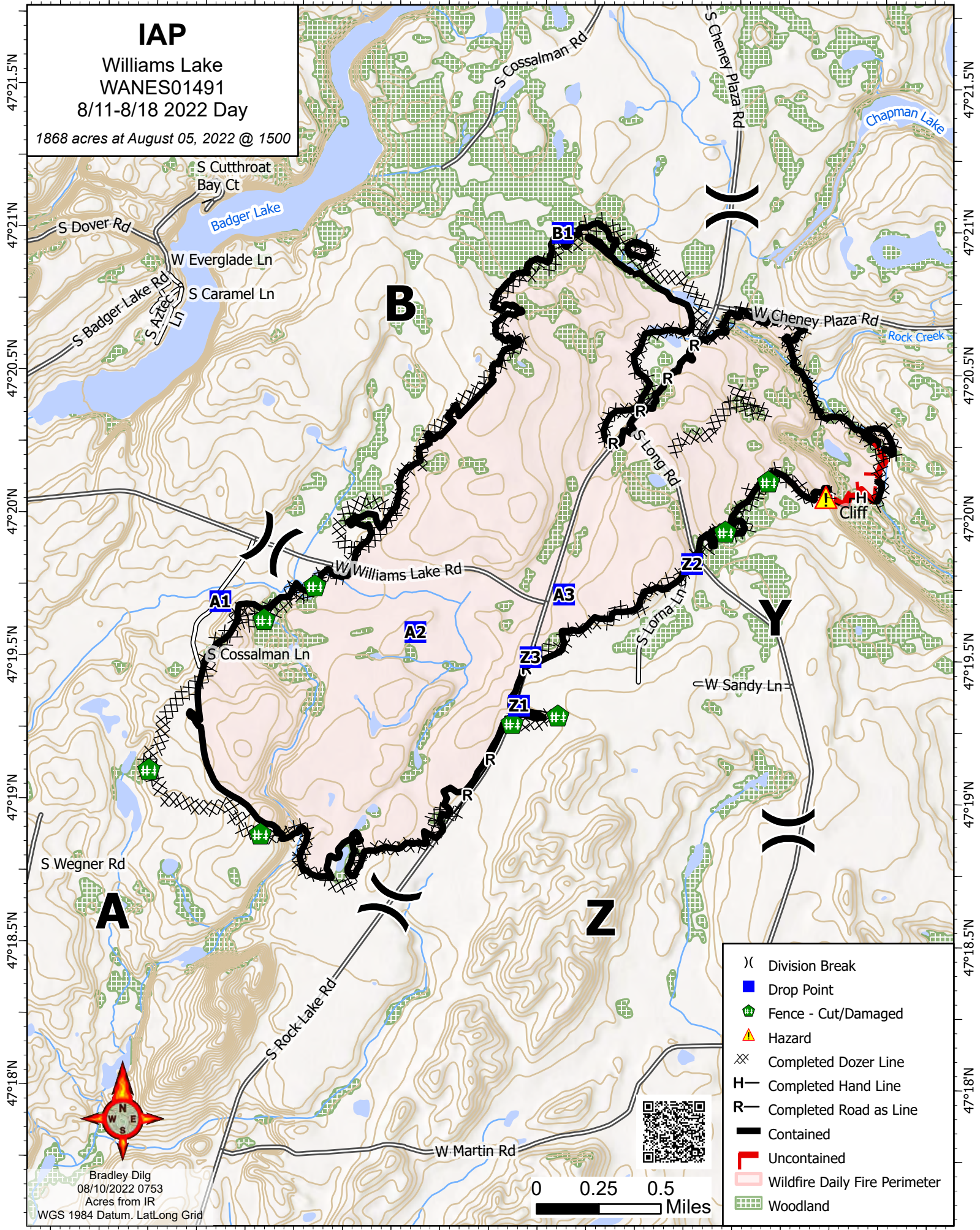
117°38.5'W 117°38'W 117°37.5'W 117°37'W 117°36.5'W 117°36.01'W 117°35.5'W 117°35'W 117°34.5'W

IAP

Williams Lake
WANES01491

8/11-8/18 2022 Day

1868 acres at August 05, 2022 @ 1500



-) Division Break
- Drop Point
- ⊕ Fence - Cut/Damaged
- ⚠ Hazard
- ⊗ Completed Dozer Line
- H Completed Hand Line
- R Completed Road as Line
- ▬ Contained
- ▬ Uncontained
- ▭ Wildfire Daily Fire Perimeter
- ▨ Woodland



0 0.25 0.5 Miles

Bradley Dilg
08/10/2022 0753
Acres from IR
WGS 1984 Datum. LatLong Grid

47°21.5'N
47°21'N
47°20.5'N
47°20'N
47°19.5'N
47°19'N
47°18.5'N
47°18'N

47°21.5'N
47°21'N
47°20.5'N
47°20'N
47°19.5'N
47°19'N
47°18.5'N
47°18'N

117°38.5'W 117°38'W 117°37.5'W 117°37'W 117°36.5'W 117°36.01'W 117°35.5'W 117°35'W 117°34.5'W