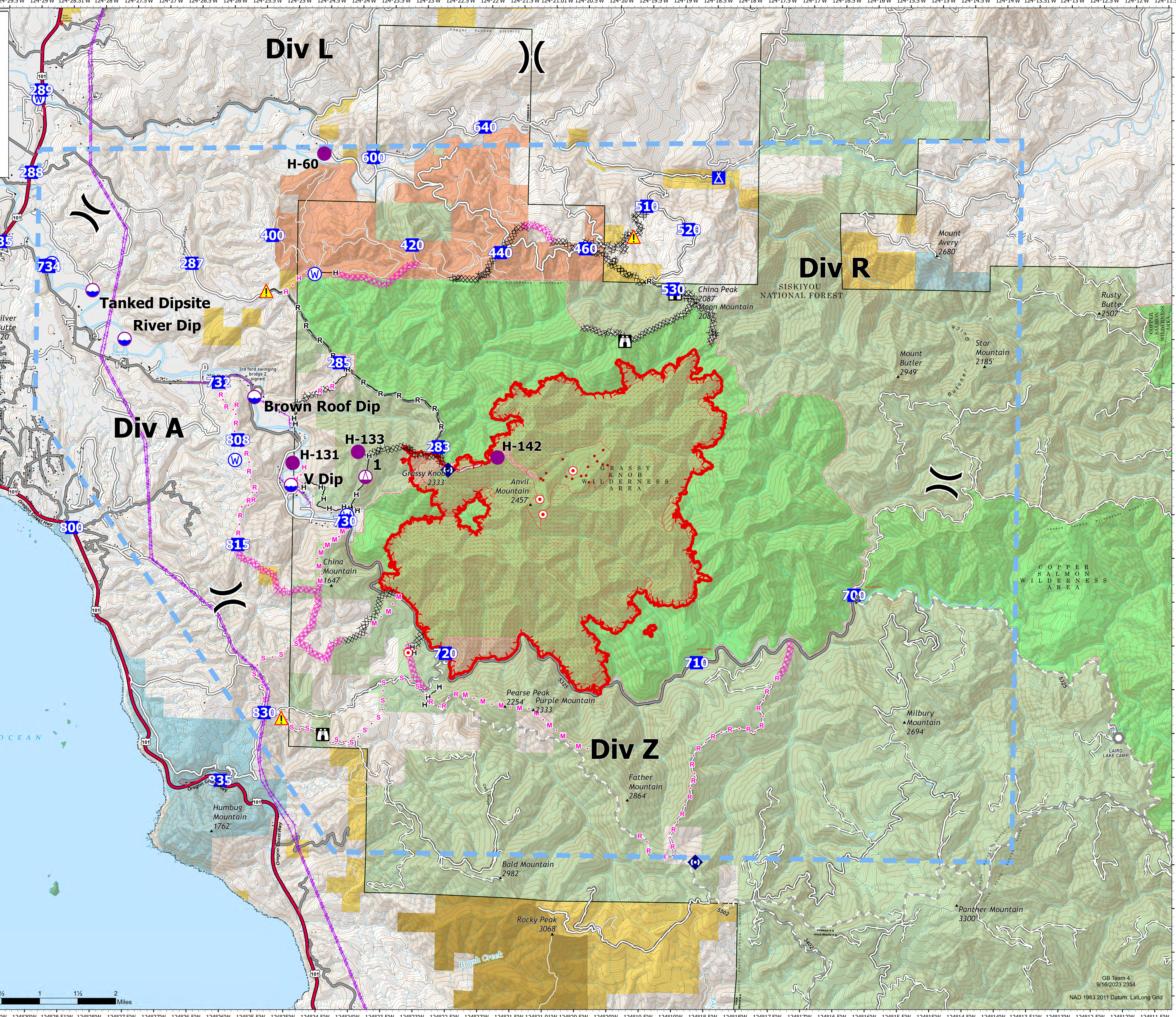


BRIEFING

ANVIL
OR-RSF-000413
9/17/2023

7,681 ACRES AT 9/16/2023 1950



- Building Footprint
- Dip Site
- Helispot
- △ Sling Site
- ⌋ Division Break
- Drop Point
- ▲ Camp
- ⊞ Staging Area
- ⌠ Lookout
- Hot Spot - Spot Fire
- Landmark
- ⊞ Repeater
- ▲ Hazard
- ⊞ Water Source
- IR Isolated Heat Source
- ⊞ Completed Dozer Line
- ⊞ Completed Hand Line
- ⊞ Completed Road as Line
- ⊞ Planned Dozer Line
- ⊞ Planned Hand Line
- ⊞ Planned Mixed Construction Line
- ⊞ Planned Road as Line
- ⊞ Planned Secondary Line
- ⊞ Aerial Hazard
- ⊞ Temporary Flight Restriction
- ⊞ Uncontained
- ⊞ IR Heat Perimeter
- ⊞ IR Intense Heat
- ⊞ IR Scattered Heat
- ⊞ Administrative FS Boundary
- ⊞ Ranger District Boundary
- ⊞ US Forest Service Wilderness
- ⊞ Coquille Lands
- ⊞ BLM Area of Critical Environmental Concern
- ⊞ Bureau of Land Management (BLM)
- ⊞ State
- ⊞ US Fish and Wildlife Service (USFWS)
- ⊞ US Forest Service (USFS)



GB Team 4
9/16/2023 2354
NAD 1983 2011 Datum, Lat/Long Grid