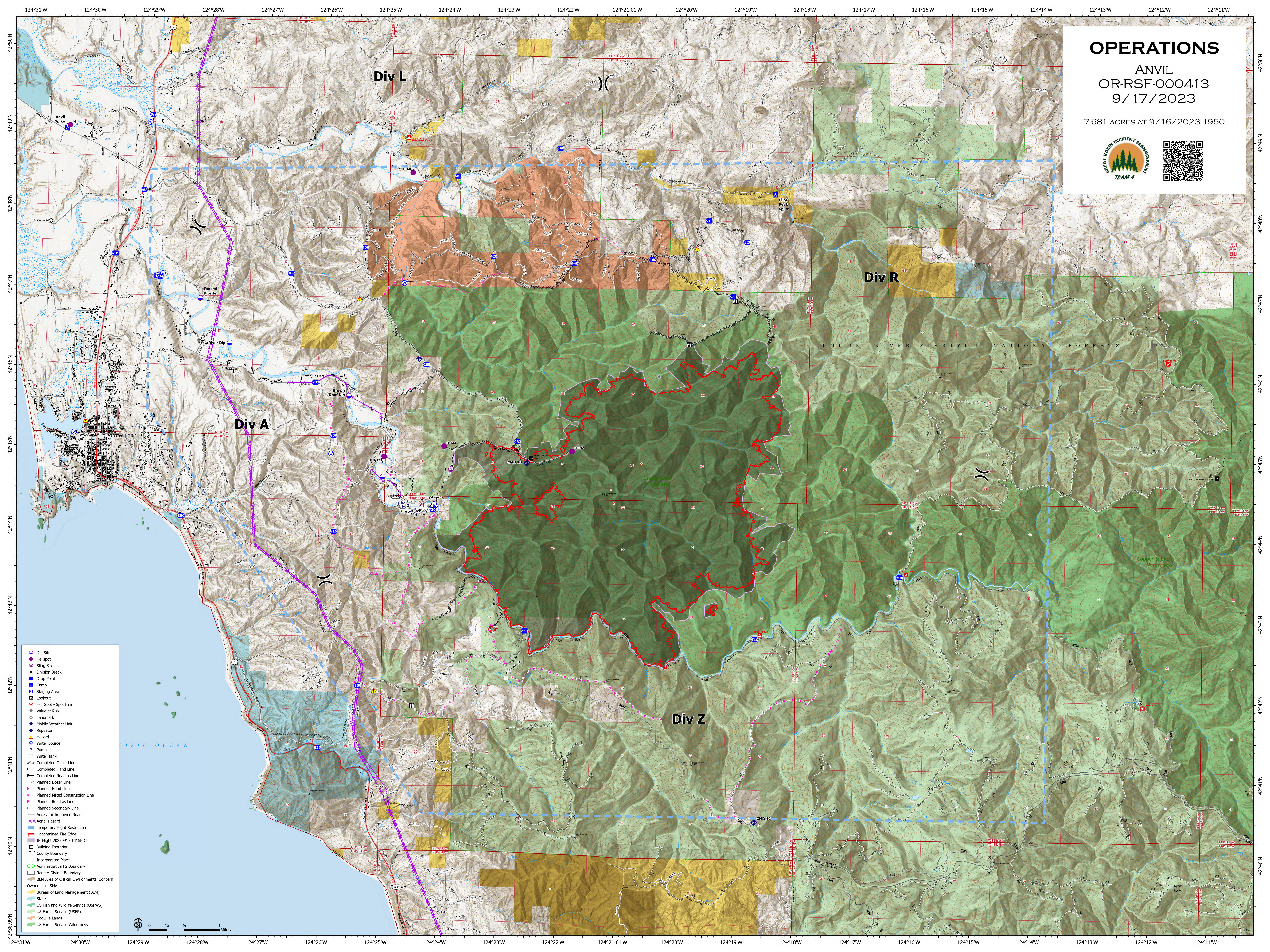


OPERATIONS

ANVIL
OR-RSF-000413
9/17/2023

7,681 ACRES AT 9/16/2023 1950



- Dip Site
- Hellspot
- Sling Site
- Division Break
- Drop Point
- Camp
- Staging Area
- Lookout
- Hot Spot - Spot Fire
- Value at Risk
- Landmark
- Mobile Weather Unit
- Repeater
- Hazard
- Water Source
- Pump
- Water Tank
- Completed Dozer Line
- Completed Hand Line
- Completed Road as Line
- Planned Dozer Line
- Planned Hand Line
- Planned Mixed Construction Line
- Planned Road as Line
- Planned Secondary Line
- Access or Improved Road
- Aerial Hazard
- Temporary Flight Restriction
- Uncontained Fire Edge
- IR Flight 20230917 1415PDT
- Building Footprint
- County Boundary
- Incorporated Place
- Administrative FS Boundary
- Ranger District Boundary
- BLM Area of Critical Environmental Concern
- Ownership - SMA
- Bureau of Land Management (BLM)
- State
- US Fish and Wildlife Service (USFWS)
- US Forest Service (USFS)
- Coquille Lands
- US Forest Service Wilderness

