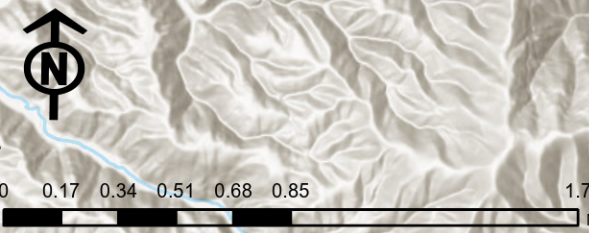


PROGRESSION

ANVIL
OR-RSF-000413
9/17/2023

7,681 ACRES AT 9/16/2023 1950



Aug 27	+26 Acres	26 Total Acres
Aug 29	+18 Acres	44 Total Acres
Aug 30	+91 Acres	135 Total Acres
Sep 02	+164 Acres	299 Total Acres
Sep 06	+2 Acres	301 Total Acres
Sep 07	+10 Acres	311 Total Acres
Sep 08	+20 Acres	331 Total Acres
Sep 09	+18 Acres	349 Total Acres
Sep 10	+37 Acres	386 Total Acres
Sep 11	+65 Acres	451 Total Acres
Sep 12	+136 Acres	587 Total Acres
Sep 13	+227 Acres	814 Total Acres
Sep 14	+619 Acres	1,433 Total Acres
Sep 15	+5,217 Acres	6,650 Total Acres
Sep 16	+1,031 Acres	7,681 Total Acres

GB Team 4
Acres from IR
NAD 1983 2011 Datum
Lat,Long Grid