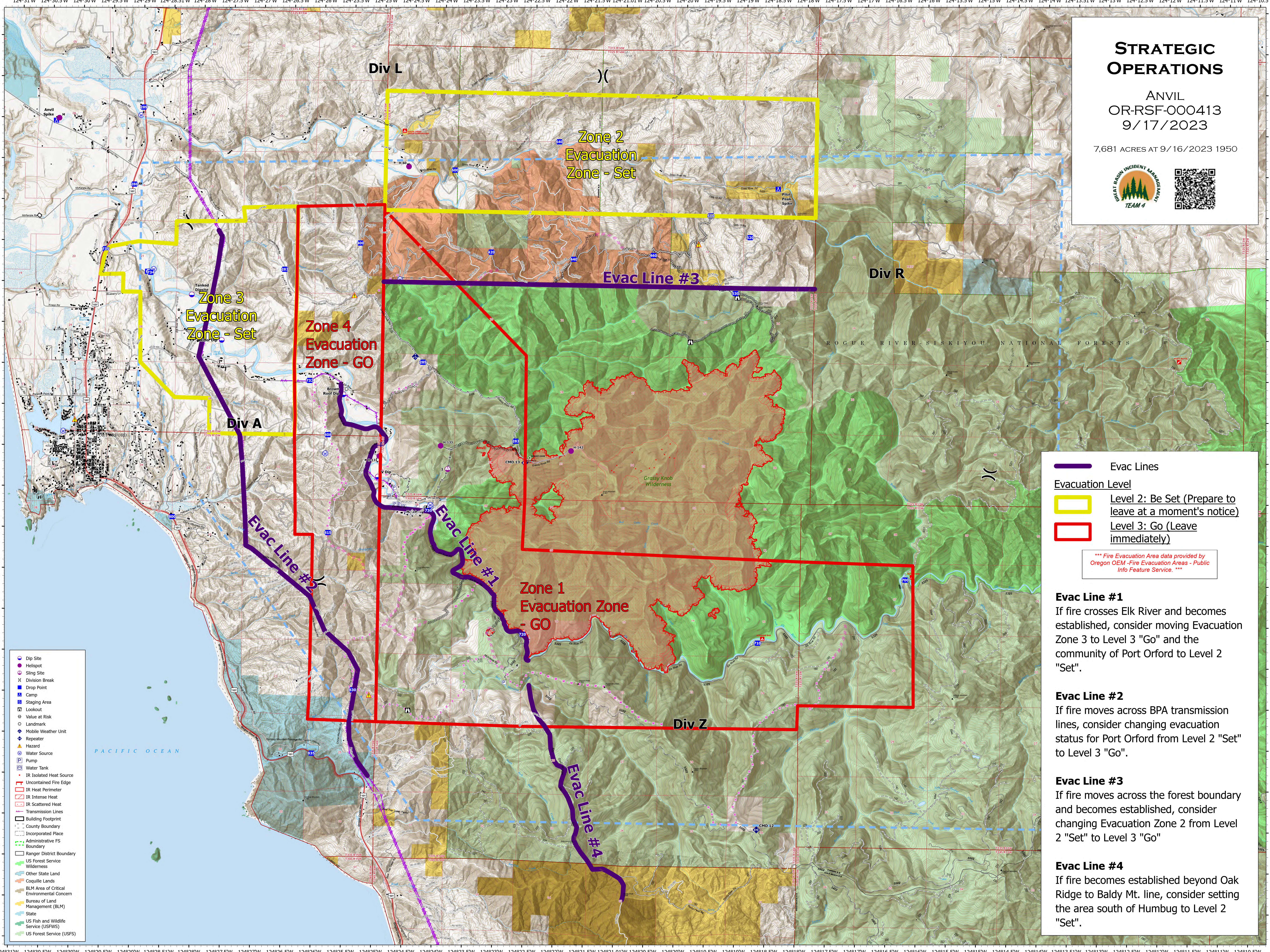


STRATEGIC OPERATIONS

ANVIL
OR-RSF-000413
9/17/2023

7,681 ACRES AT 9/16/2023 1950



- Dip Site
- Hellspot
- Sling Site
- Division Break
- Drop Point
- Camp
- Staging Area
- Lookout
- Value at Risk
- Landmark
- Mobile Weather Unit
- Repeater
- Hazard
- Water Source
- Pump
- Water Tank
- IR Isolated Heat Source
- Uncontained Fire Edge
- IR Heat Perimeter
- IR Intense Heat
- IR Scattered Heat
- Transmission Lines
- Building Footprint
- County Boundary
- Incorporated Place
- Administrative FS Boundary
- Ranger District Boundary
- US Forest Service Wilderness
- Other State Land
- Coquille Lands
- BLM Area of Critical Environmental Concern
- Bureau of Land Management (BLM)
- State
- US Fish and Wildlife Service (USFWS)
- US Forest Service (USFS)

Evac Lines

Evacuation Level

- Level 2: Be Set (Prepare to leave at a moment's notice)
- Level 3: Go (Leave immediately)

*** Fire Evacuation Area data provided by Oregon OEM - Fire Evacuation Areas - Public Info Feature Service. ***

Evac Line #1
If fire crosses Elk River and becomes established, consider moving Evacuation Zone 3 to Level 3 "Go" and the community of Port Orford to Level 2 "Set".

Evac Line #2
If fire moves across BPA transmission lines, consider changing evacuation status for Port Orford from Level 2 "Set" to Level 3 "Go".

Evac Line #3
If fire moves across the forest boundary and becomes established, consider changing Evacuation Zone 2 from Level 2 "Set" to Level 3 "Go"

Evac Line #4
If fire becomes established beyond Oak Ridge to Baldy Mt. line, consider setting the area south of Humbug to Level 2 "Set".