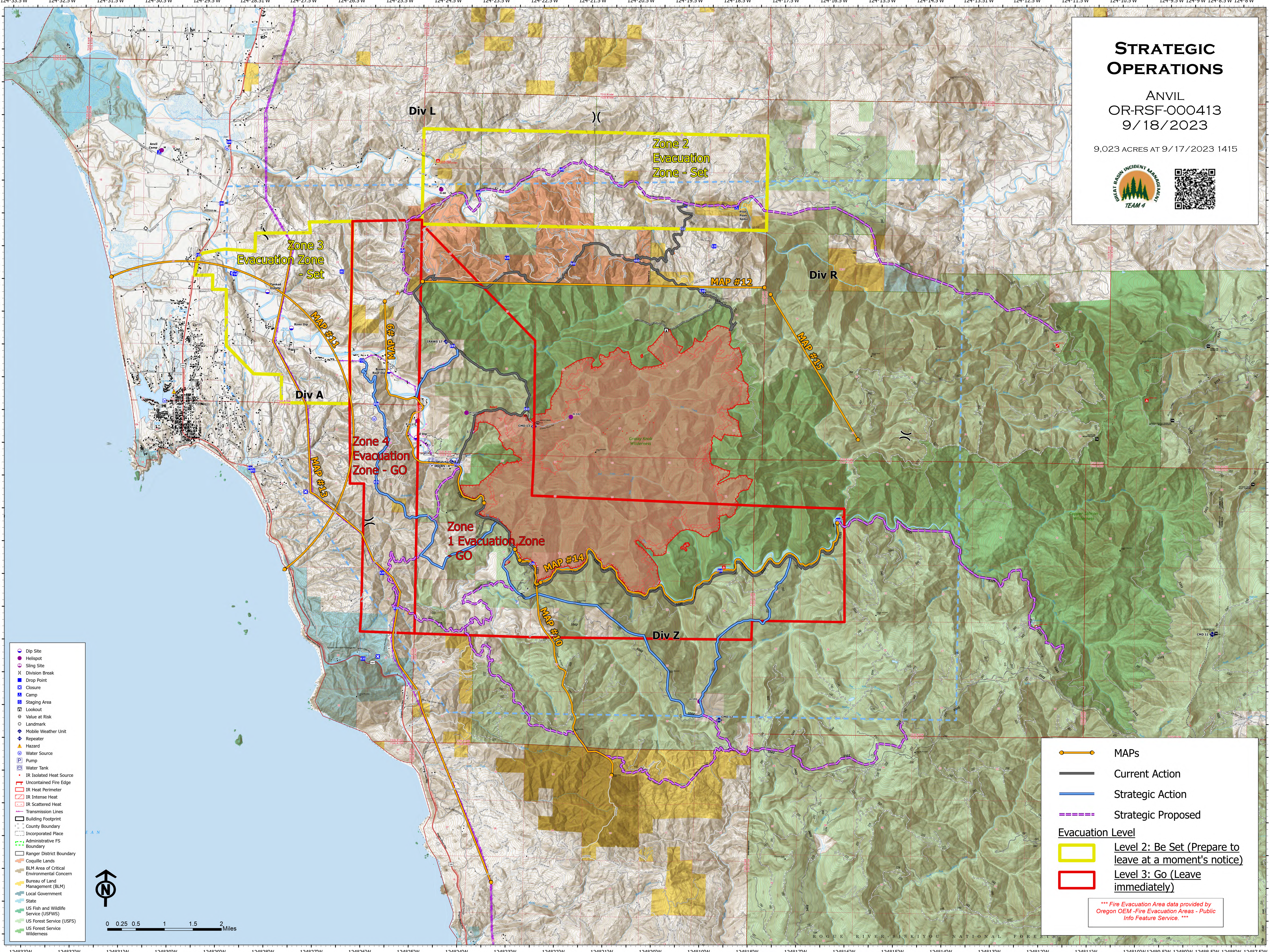


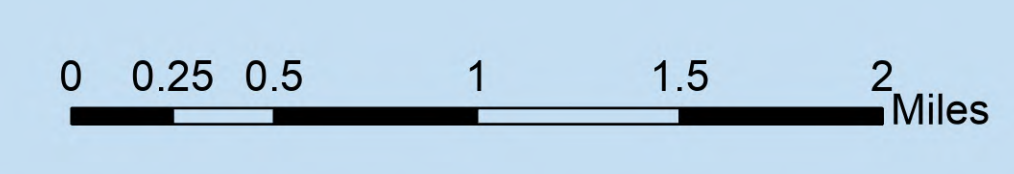
STRATEGIC OPERATIONS

ANVIL
OR-RSF-000413
9/18/2023

9,023 ACRES AT 9/17/2023 1415



- Dip Site
- Hellspot
- Sling Site
- Division Break
- Drop Point
- Closure
- Camp
- Staging Area
- Lookout
- Value at Risk
- Landmark
- Mobile Weather Unit
- Repeater
- Hazard
- Water Source
- Pump
- Water Tank
- IR Isolated Heat Source
- Uncontained Fire Edge
- IR Heat Perimeter
- IR Intense Heat
- IR Scattered Heat
- Transmission Lines
- Building Footprint
- County Boundary
- Incorporated Place
- Administrative FS Boundary
- Ranger District Boundary
- Coquille Lands
- BLM Area of Critical Environmental Concern
- Bureau of Land Management (BLM)
- Local Government
- State
- US Fish and Wildlife Service (USFWS)
- US Forest Service (USFS)
- US Forest Service Wilderness



- MAPs
 - Current Action
 - Strategic Action
 - Strategic Proposed
- Evacuation Level**
- Level 2: Be Set (Prepare to leave at a moment's notice)
 - Level 3: Go (Leave immediately)

*** Fire Evacuation Area data provided by Oregon OEM - Fire Evacuation Areas - Public Info Feature Service. ***