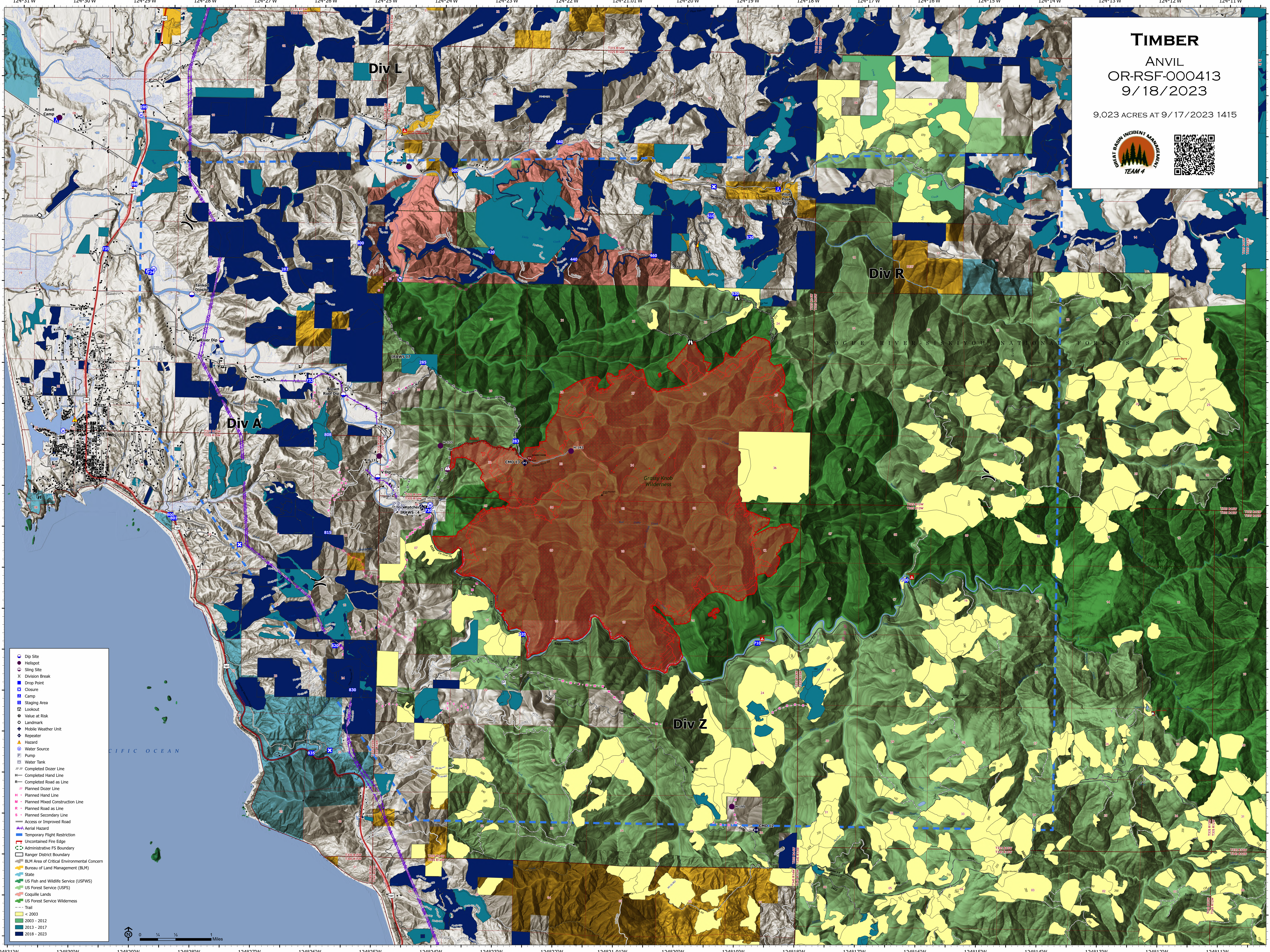


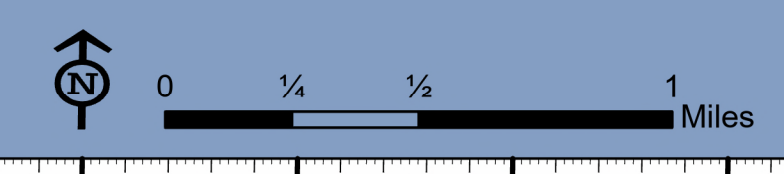
TIMBER
 ANVIL
 OR-RSF-000413
 9/18/2023

9,023 ACRES AT 9/17/2023 1415





- Dip Site
- Helispot
- Sling Site
- ⌋ Division Break
- Drop Point
- ⊠ Closure
- Camp
- Staging Area
- Lookout
- Value at Risk
- Landmark
- ◆ Mobile Weather Unit
- ◆ Repeater
- ▲ Hazard
- Water Source
- ⊠ Pump
- ⊠ Water Tank
- Completed Dozer Line
- Completed Hand Line
- R— Completed Road as Line
- Planned Dozer Line
- Planned Hand Line
- Planned Mixed Construction Line
- Planned Road as Line
- Planned Secondary Line
- Access or Improved Road
- Aerial Hazard
- Temporary Flight Restriction
- Uncontained Fire Edge
- Administrative FS Boundary
- Ranger District Boundary
- BLM Area of Critical Environmental Concern
- Bureau of Land Management (BLM)
- State
- US Fish and Wildlife Service (USFWS)
- US Forest Service (USFS)
- Coquille Lands
- US Forest Service Wilderness
- Trail
- < 2003
- 2003 - 2012
- 2013 - 2017
- 2018 - 2023



124°31'W 124°30'W 124°29'W 124°28'W 124°27'W 124°26'W 124°25'W 124°24'W 124°23'W 124°22'W 124°21.01'W 124°20'W 124°19'W 124°18'W 124°17'W 124°16'W 124°15'W 124°14'W 124°13'W 124°12'W 124°11'W