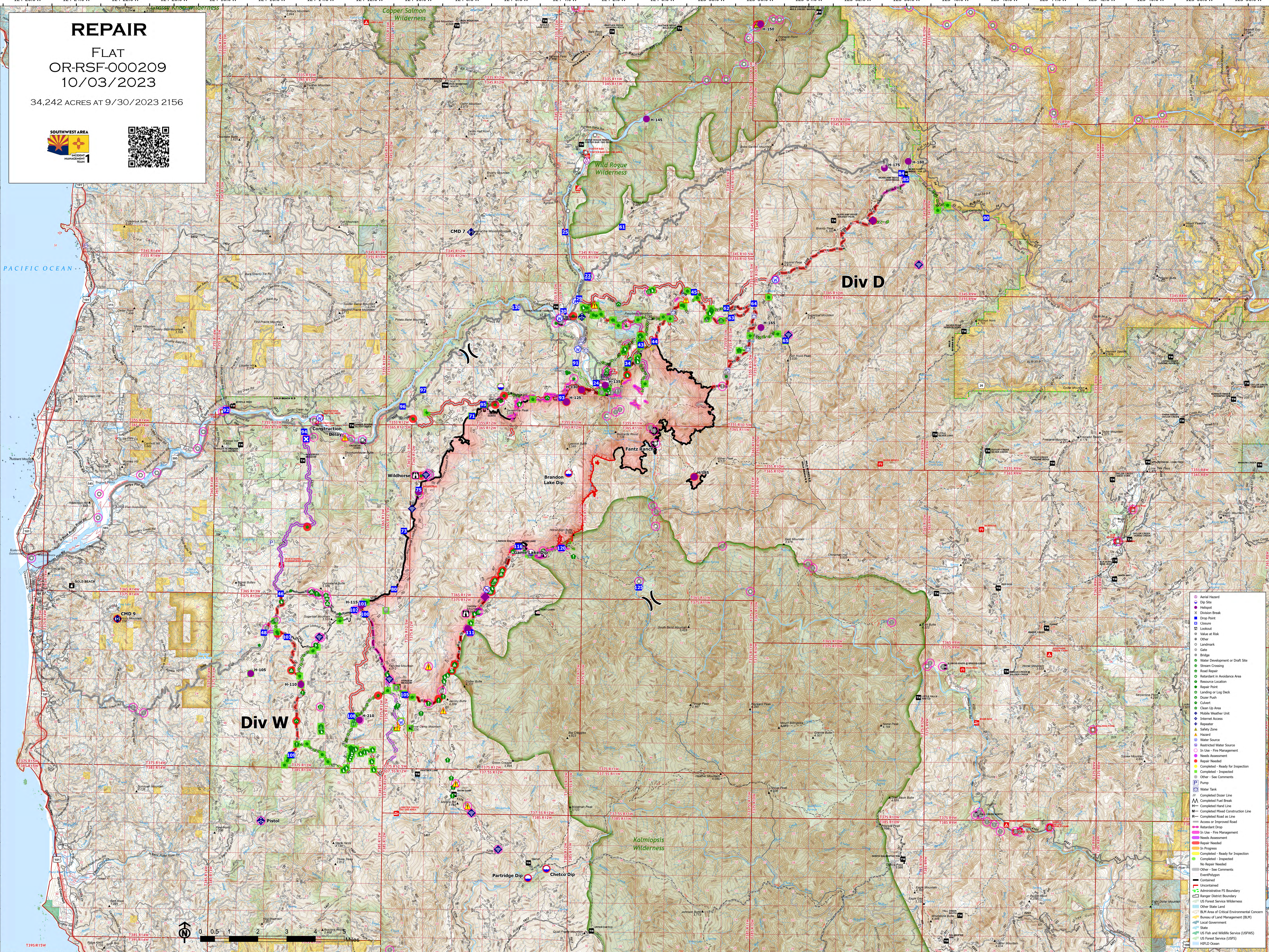


# REPAIR

FLAT  
OR-RSF-000209  
10/03/2023

34,242 ACRES AT 9/30/2023 2156



|  |                                            |
|--|--------------------------------------------|
|  | Aerial Hazard                              |
|  | Dip Site                                   |
|  | End Point                                  |
|  | Division Break                             |
|  | Drop Point                                 |
|  | Colors                                     |
|  | Lookout                                    |
|  | Value at Risk                              |
|  | Other                                      |
|  | Landmark                                   |
|  | Gate                                       |
|  | Bridge                                     |
|  | Water Development or Draft Site            |
|  | Stream Crossing                            |
|  | Road Repair                                |
|  | Restaurant in Avoidance Area               |
|  | Resource Location                          |
|  | Repair Point                               |
|  | Landing or Log Deck                        |
|  | Dozer Push                                 |
|  | Cable                                      |
|  | Clean Up Area                              |
|  | Mobile Weather Unit                        |
|  | Internet Access                            |
|  | Transect                                   |
|  | Safety Zone                                |
|  | Hazard                                     |
|  | Water Source                               |
|  | Restricted Water Source                    |
|  | In Use - Fire Management                   |
|  | Needs Assessment                           |
|  | Special Needs                              |
|  | In Progress                                |
|  | Completed - Ready for Inspection           |
|  | Completed - Inspected                      |
|  | Other - See Comments                       |
|  | Water Tank                                 |
|  | Completed Dozer Line                       |
|  | Completed Fuel Break                       |
|  | Completed Haul Line                        |
|  | Completed Mixed Construction Line          |
|  | Completed Road as Line                     |
|  | Access or Improved Road                    |
|  | In Use - Fire Management                   |
|  | Needs Assessment                           |
|  | Special Needs                              |
|  | In Progress                                |
|  | Completed - Ready for Inspection           |
|  | Completed - Inspected                      |
|  | Other - See Comments                       |
|  | Event Polygon                              |
|  | Contained                                  |
|  | Incorporated                               |
|  | Administrative FS Boundary                 |
|  | Ranger District Boundary                   |
|  | US Forest Service Wilderness               |
|  | Other State Land                           |
|  | BLM Area of Critical Environmental Concern |
|  | Bureau of Land Management (BLM)            |
|  | Local Government                           |
|  | State                                      |
|  | US Fish and Wildlife Service (USFWS)       |
|  | US Forest Service (USFS)                   |
|  | INTEL Ocean                                |