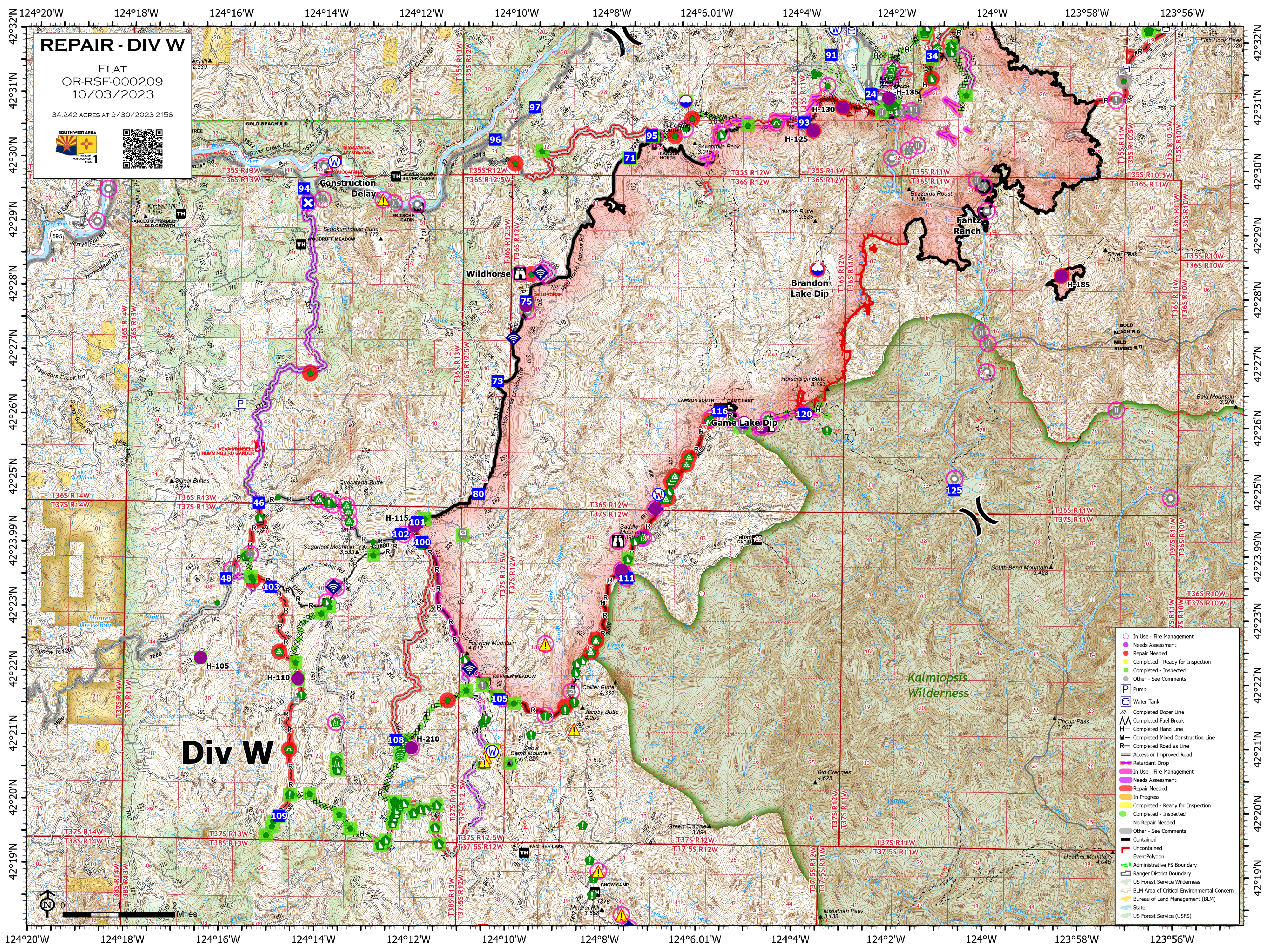


REPAIR - DIV W

FLAT
OR-RSF-000209
10/03/2023

34,242 ACRES AT 9/30/2023 2156



Div W

Kalmiopsis
Wilderness

- In Use - Fire Management
- Needs Assessment
- Repair Needed
- Completed - Ready for Inspection
- Completed - Inspected
- Other - See Comments
- Pump
- Water Tank
- Completed Dozer Line
- Completed Fuel Break
- Completed Hand Line
- Completed Mixed Construction Line
- Completed Road as Line
- Access or Improved Road
- Retardant Drop
- In Use - Fire Management
- Needs Assessment
- Repair Needed
- In Progress
- Completed - Ready for Inspection
- Completed - Inspected
- No Repair Needed
- Other - See Comments
- Contained
- Uncontained
- EventPolygon
- Administrative FS Boundary
- Ranger District Boundary
- US Forest Service Wilderness
- BLM Area of Critical Environmental Concern
- Bureau of Land Management (BLM)
- State
- US Forest Service (USFS)

