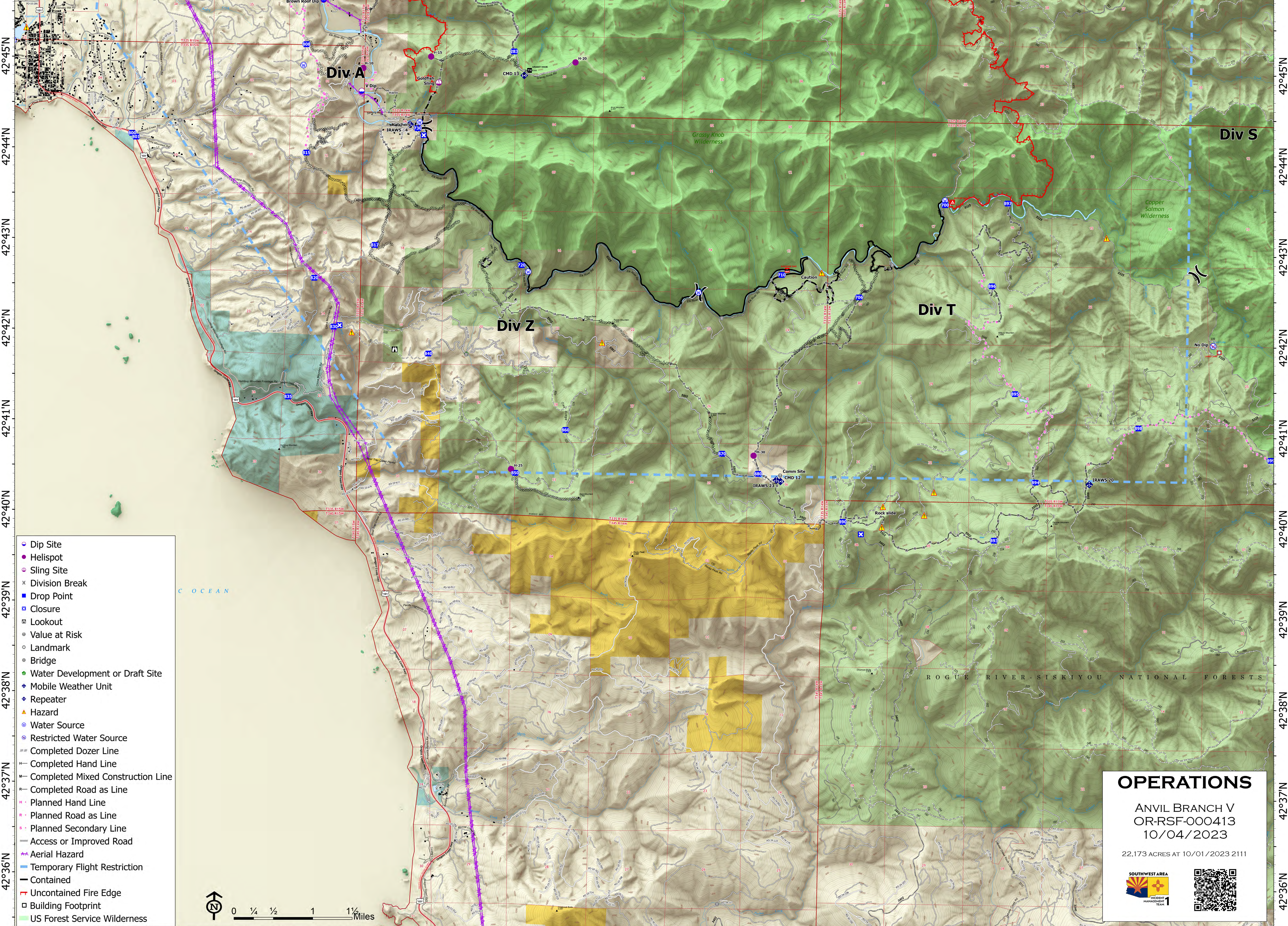


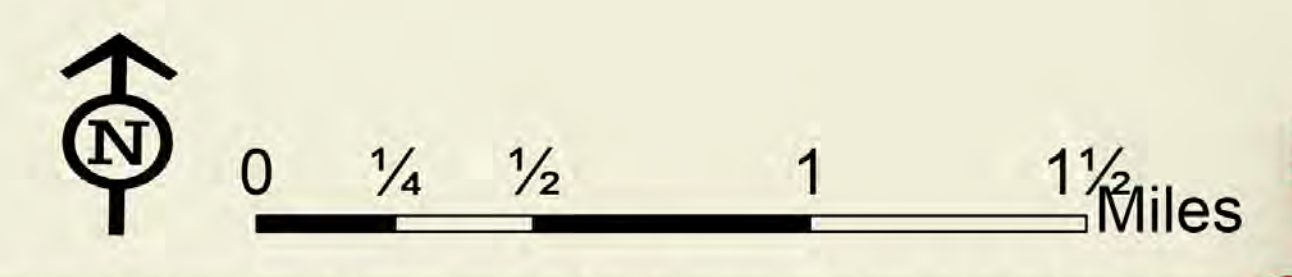
124°30'W 124°29'W 124°28'W 124°27'W 124°26'W 124°25'W 124°24'W 124°23'W 124°22'W 124°21'W 124°20'W 124°19'W 124°18'W 124°17'W 124°16'W 124°15'W 124°14'W 124°13'W 124°12'W



124°29'W 124°28'W 124°27'W 124°26'W 124°25'W 124°24'W 124°23'W 124°22'W 124°21'W 124°20'W 124°19'W 124°18'W 124°17'W 124°16'W 124°15'W 124°14'W 124°13'W 124°12'W

- Dip Site
- Helispot
- Sling Site
- ✕ Division Break
- Drop Point
- Closure
- Lookout
- Value at Risk
- Landmark
- Bridge
- Water Development or Draft Site
- ◆ Mobile Weather Unit
- ◆ Repeater
- ▲ Hazard
- Water Source
- Restricted Water Source
- Completed Dozer Line
- Completed Hand Line
- Completed Mixed Construction Line
- Completed Road as Line
- Planned Hand Line
- Planned Road as Line
- Planned Secondary Line
- Access or Improved Road
- Aerial Hazard
- Temporary Flight Restriction
- Contained
- Uncontained Fire Edge
- Building Footprint
- US Forest Service Wilderness

OCEAN



# OPERATIONS

ANVIL BRANCH V  
OR-RSF-000413  
10/04/2023

22,173 ACRES AT 10/01/2023 2111

