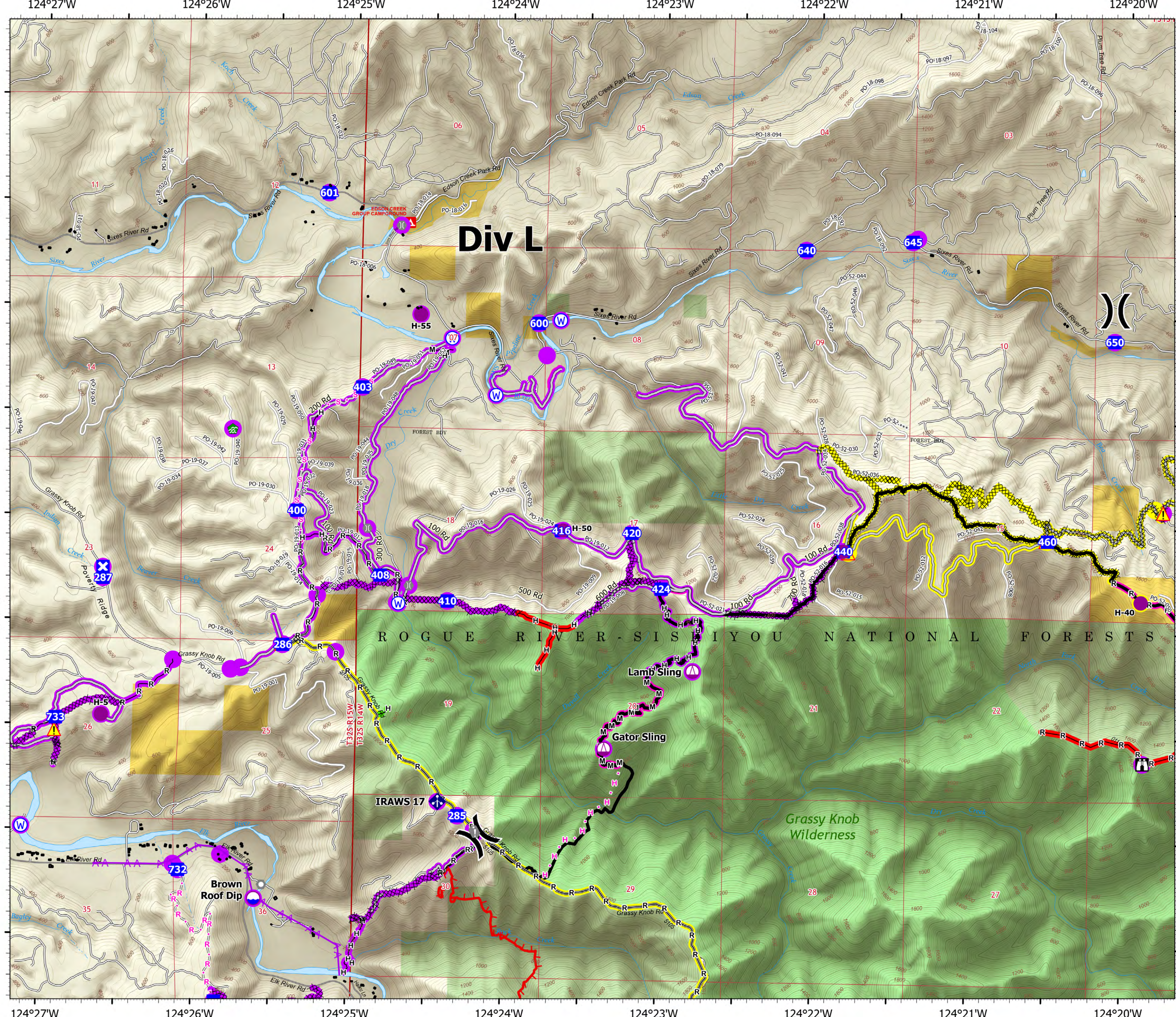


# OPERATIONS

ANVIL DIV L  
OR-RSF-000413  
10/04/2023  
22,173 ACRES AT 10/01/2023 2111



- Dip Site
- Helispot
- Sling Site
- Division Break
- Drop Point
- Closure
- Lookout
- Value at Risk
- Landmark
- Bridge
- Water Development or Draft Site
- Mobile Weather Unit
- Hazard
- Water Source
- Completed Dozer Line
- Completed Hand Line
- Completed Mixed Construction Line
- Completed Road as Line
- Planned Hand Line
- Planned Road as Line
- Planned Secondary Line
- Access or Improved Road
- Aerial Hazard
- Contained
- Uncontained Fire Edge
- Building Footprint
- US Forest Service Wilderness
- Bureau of Land Management (BLM)
- US Forest Service (USFS)
- Needs Assessment
- Completed - Ready for Inspection
- In Use - Fire Management
- Needs Assessment
- Repair Needed
- Completed - Ready for Inspection
- Completed - Inspected



## Div L

ROGUE RIVER-SISKIYOU NATIONAL FORESTS

Grassy Knob Wilderness

0 1/4 1/2 Miles

