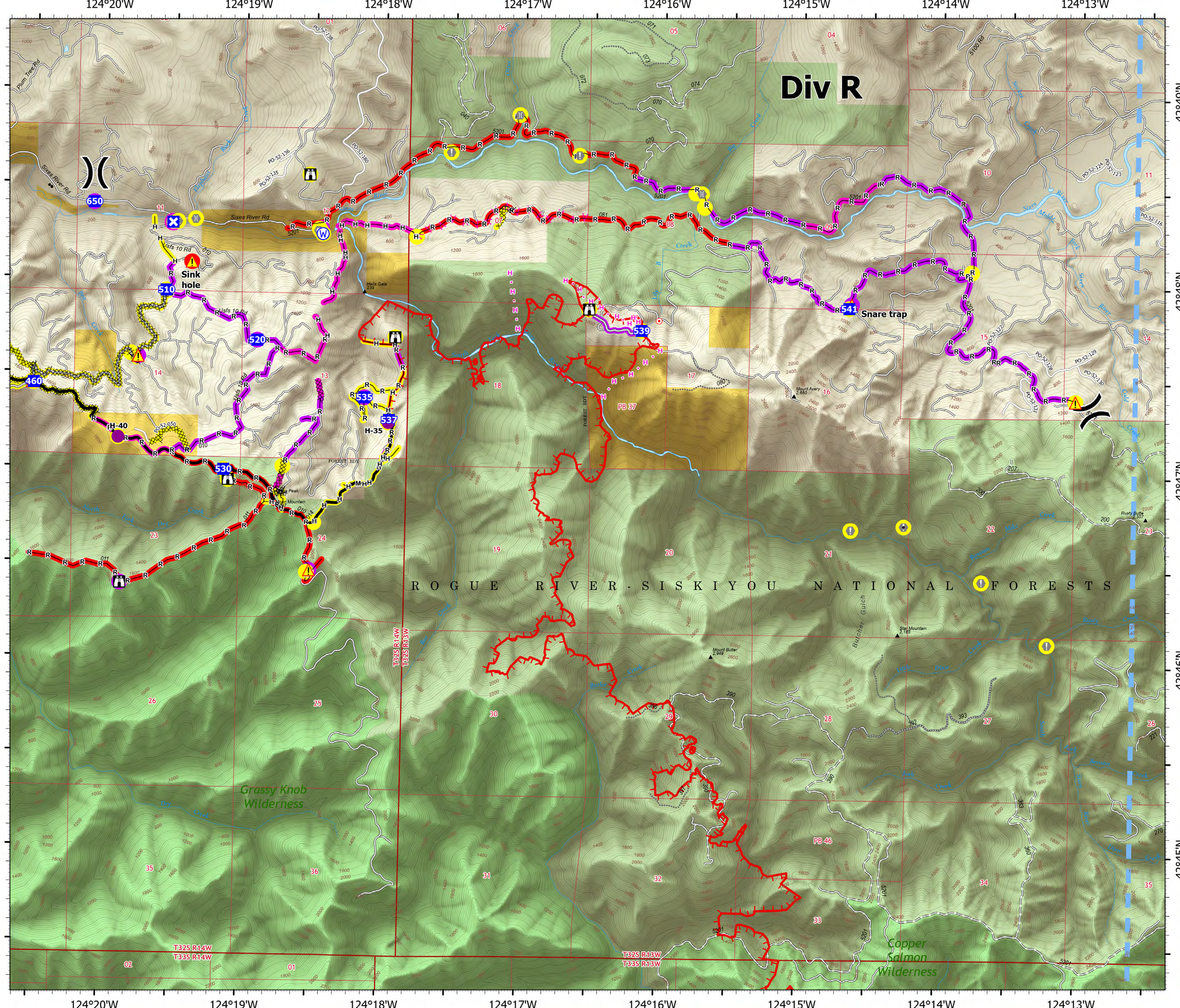


OPERATIONS

ANVIL DIV R
OR-RSF-000413
10/04/2023
22,173 ACRES AT 10/01/2023 2111



- Helispot
-) Division Break
- Drop Point
- ⊠ Closure
- ⊞ Lookout
- Hot Spot - Spot Fire
- Value at Risk
- Landmark
- ⌒ Bridge
- ▲ Hazard
- ⊞ Water Source
- ⊞ Completed Dozer Line
- H Completed Hand Line
- M Completed Mixed Construction Line
- R Completed Road as Line
- ▲ Planned Fuel Break
- H Planned Hand Line
- Access or Improved Road
- Temporary Flight Restriction
- Contained
- Uncontained Fire Edge
- Building Footprint
- US Forest Service Wilderness
- Bureau of Land Management (BLM)
- US Forest Service (USFS)
- In Use - Fire Management
- Needs Assessment
- Repair Needed
- Completed - Ready for Inspection
- In Use - Fire Management
- Needs Assessment
- Repair Needed
- Completed - Ready for Inspection



Div R

ROGUE RIVER - SISKIYOU NATIONAL FORESTS

Grassy Knob Wilderness

Copper Salmon Wilderness

0 1/4 1/2 Miles