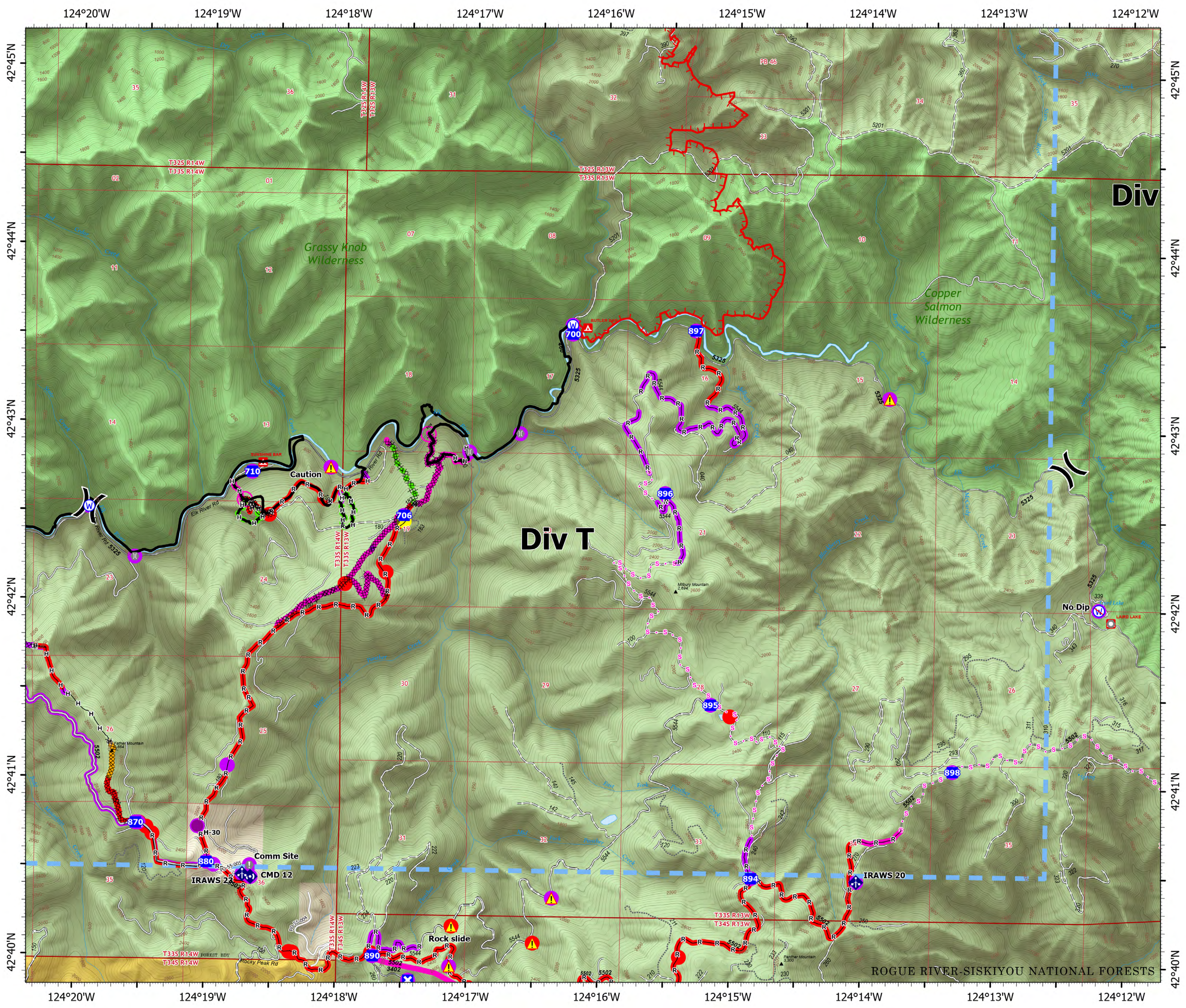


OPERATIONS

ANVIL DIV T
OR-RSF-000413
10/04/2023
22,173 ACRES AT 10/01/2023 2111



- Helispot
-) Division Break
- Drop Point
- ⊠ Closure
- ⊕ Value at Risk
- Landmark
- ⌒ Bridge
- ⊕ Water Development or Draft Site
- ⊕ Mobile Weather Unit
- ⊕ Repeater
- ⚠ Hazard
- ⊕ Water Source
- ⊕ Restricted Water Source
- ⊕ Completed Dozer Line
- ⊕ Completed Hand Line
- ⊕ Completed Mixed Construction Line
- ⊕ Completed Road as Line
- ⊕ Planned Secondary Line
- ⊕ Access or Improved Road
- ⊕ Temporary Flight Restriction
- ⊕ Contained
- ⊕ Uncontained Fire Edge
- ⊕ US Forest Service Wilderness
- ⊕ Bureau of Land Management (BLM)
- ⊕ US Forest Service (USFS)
- In Use - Fire Management
- Needs Assessment
- Repair Needed
- Completed - Ready for Inspection
- In Use - Fire Management
- Needs Assessment
- Repair Needed
- In Progress
- Completed - Inspected
- No Repair Needed



Div T

Div

ROGUE RIVER-SISKIYOU NATIONAL FORESTS

0 1/4 1/2 Miles