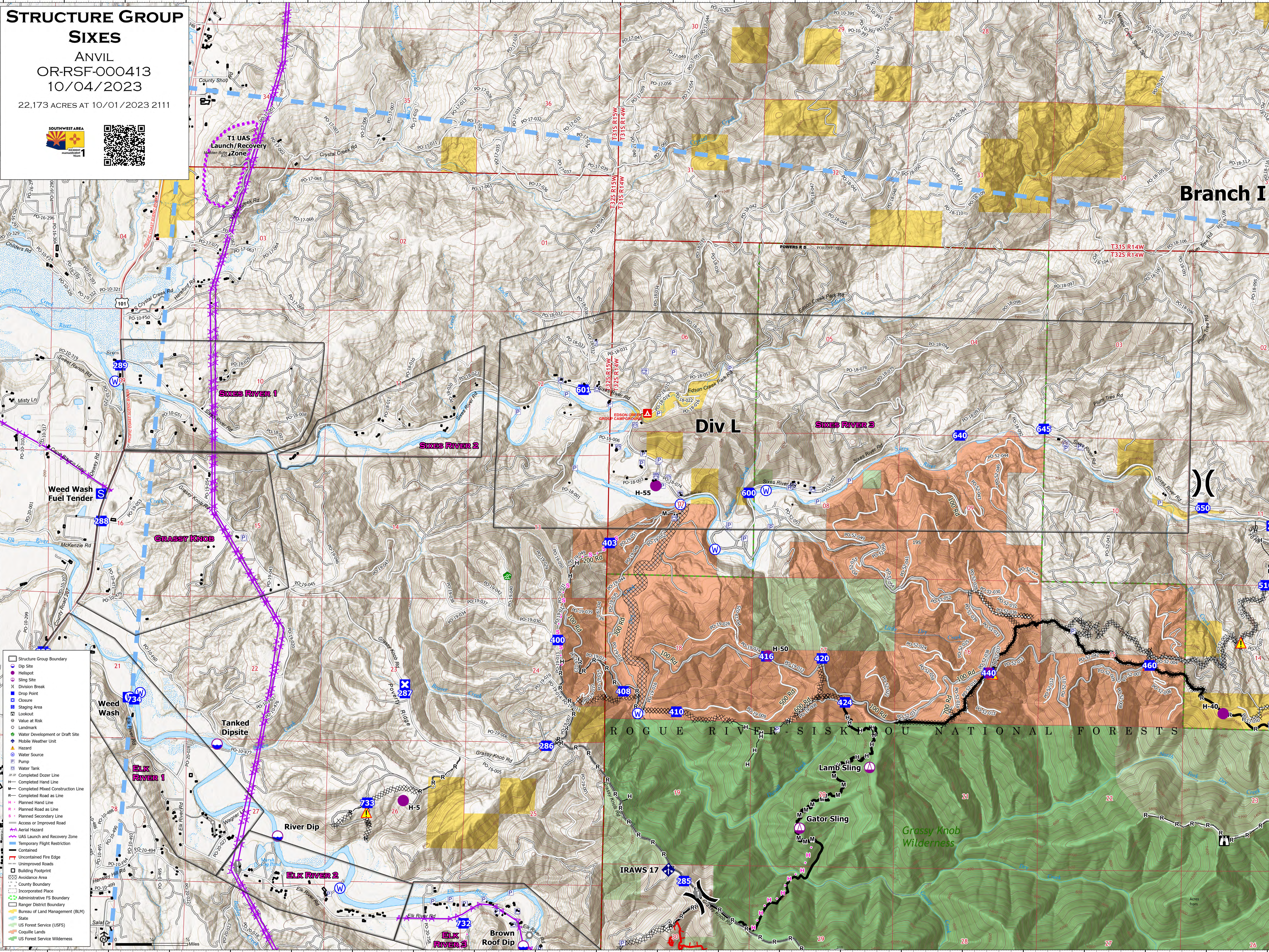


STRUCTURE GROUP
SIXES
ANVIL
OR-RSF-000413
10/04/2023
22,173 ACRES AT 10/01/2023 2111



- Structure Group Boundary
- Dip Site
- Helispot
- Sling Site
- Division Break
- Drop Point
- Closure
- Staging Area
- Lookout
- Value at Risk
- Landmark
- Water Development or Draft Site
- Mobile Weather Unit
- Hazard
- Water Source
- Pump
- Water Tank
- Completed Dozer Line
- Completed Hand Line
- Completed Mixed Construction Line
- Completed Road as Line
- Planned Hand Line
- Planned Road as Line
- Planned Secondary Line
- Access or Improved Road
- Aerial Hazard
- UAS Launch and Recovery Zone
- Temporary Flight Restriction
- Contained
- Uncontained Fire Edge
- Unimproved Roads
- Building Footprint
- Avoidance Area
- County Boundary
- Incorporated Place
- Administrative FS Boundary
- Ranger District Boundary
- Bureau of Land Management (BLM)
- State
- US Forest Service (USFS)
- Coquille Lands
- US Forest Service Wilderness

Branch I

Div L

ROGUE RIVER-SISKIYOU NATIONAL FORESTS

Grassy Knob Wilderness