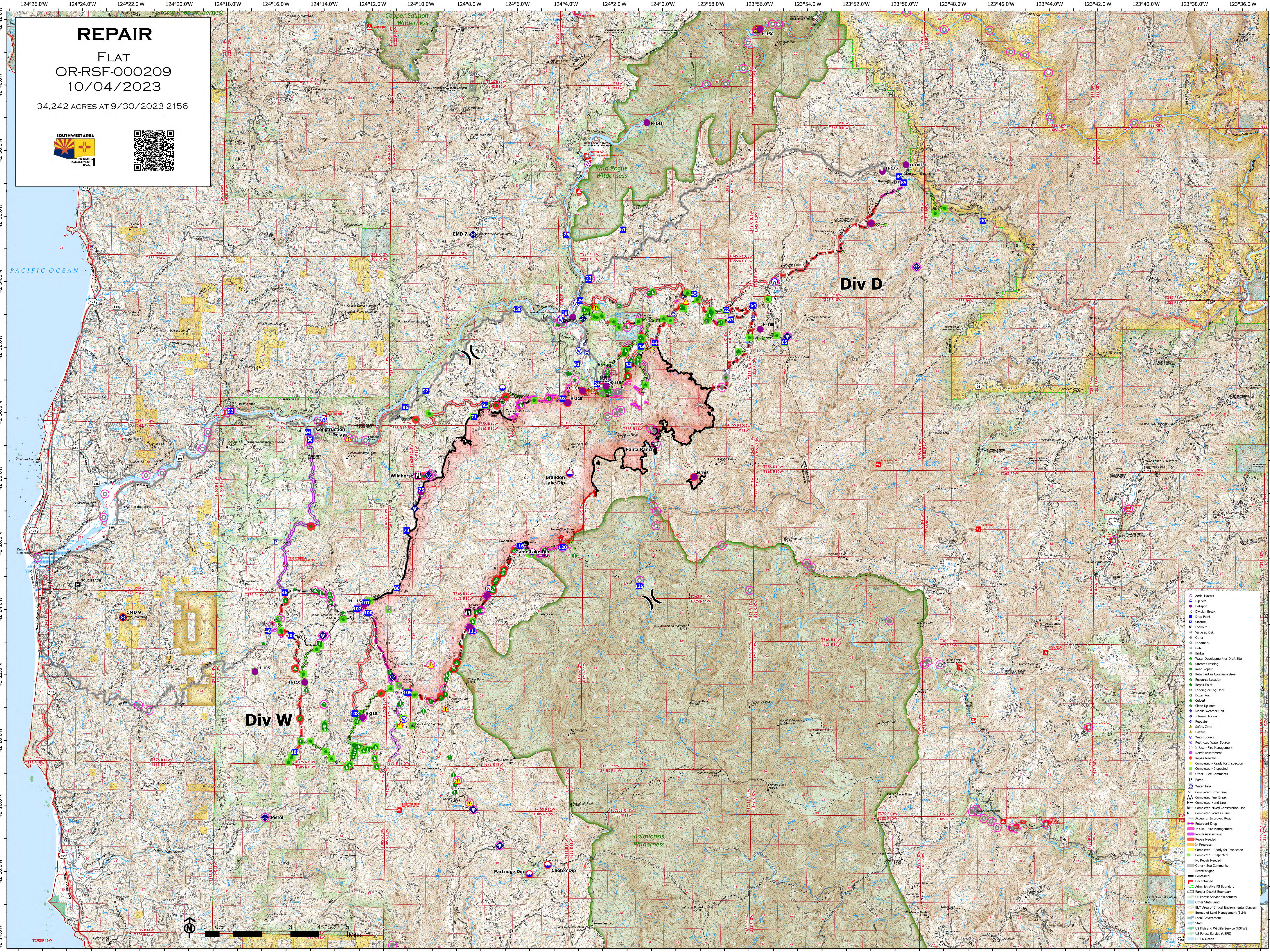


REPAIR

FLAT
OR-RSF-000209
10/04/2023

34,242 ACRES AT 9/30/2023 2156



- Aerial Hazard
- Dip Site
- Headcut
- Division Break
- Drop Point
- Clearing
- Lookout
- Value at Risk
- Other
- Landmark
- Gate
- Bridge
- Water Development or Draft Site
- Stream Crossing
- Road Repair
- Restoration in Avoidance Area
- Resource Location
- Repair Point
- Landing or Log Deck
- Dozer Push
- Calder Push
- Clean Up Area
- Mobile Weather Unit
- Internet Access
- Scopex
- Safety Zone
- Hazard
- Water Source
- Restricted Water Source
- In Use - Fire Management
- Needs Assessment
- Needs Needed
- In Progress
- Completed - Ready for Inspection
- Completed - Inspected
- Other - See Comments
- Water Tank
- Completed Dozer Line
- Completed Fuel Break
- Completed Hazard Line
- Completed Mixed Construction Line
- Completed Road as Line
- Access or Improved Road
- Subsidence Drop
- In Use - Fire Management
- Needs Assessment
- Needs Needed
- In Progress
- Completed - Ready for Inspection
- Completed - Inspected
- Other - See Comments
- EventPolygon
- Contained
- Uncontained
- Administrative FS Boundary
- Ranger District Boundary
- US Forest Service Wilderness
- Other State Land
- BLM Area of Critical Environmental Concern
- Bureau of Land Management (BLM)
- Local Government
- State
- US Fish and Wildlife Service (USFWS)
- US Forest Service (USFS)
- INTEL Overlay