

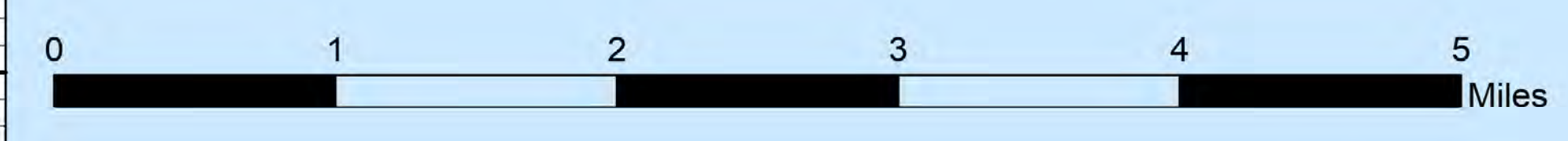
AIR OPS

ANVIL
OR-RSF-000413
10/04/2023

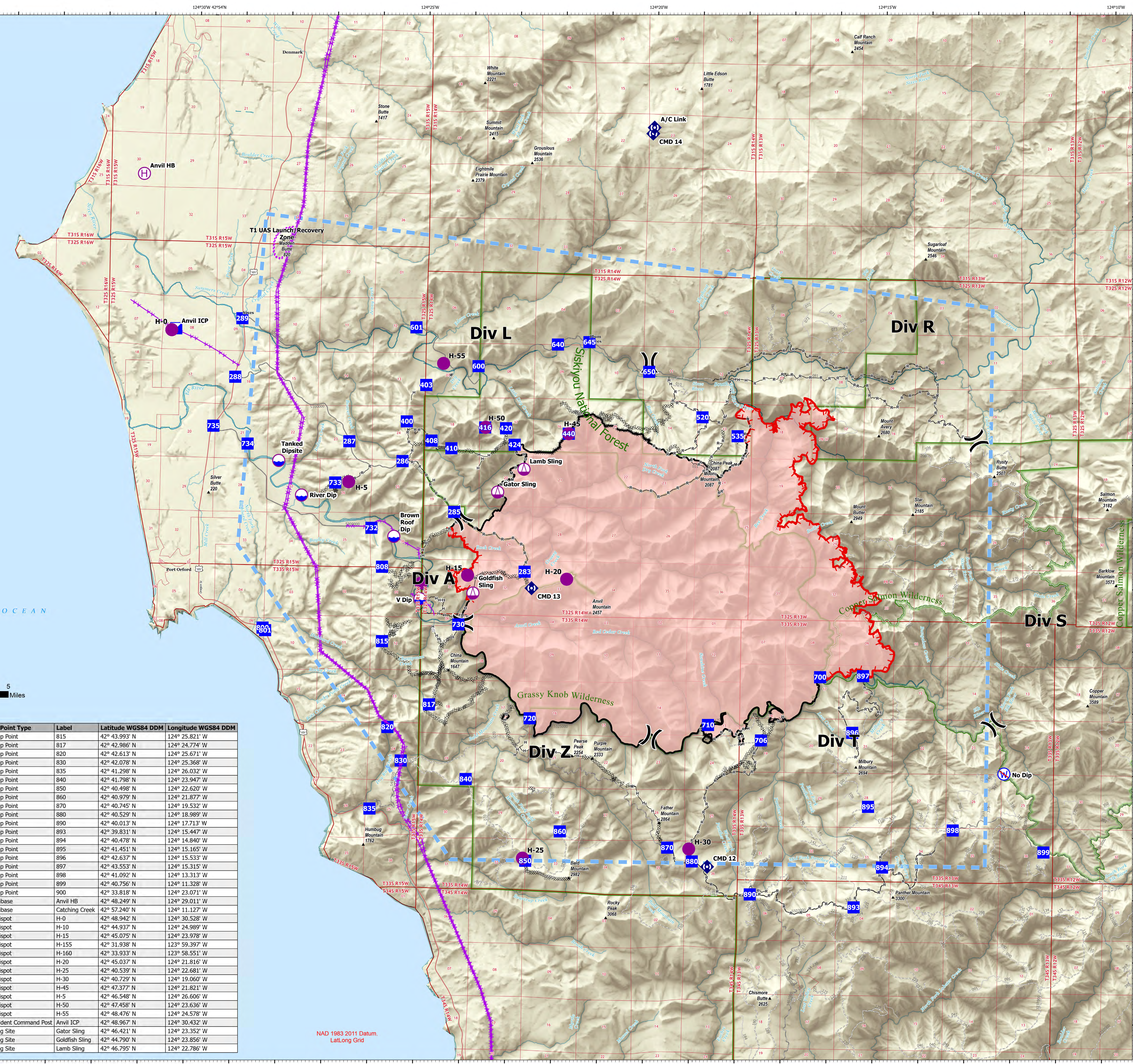
22,173 ACRES AT 10/01/2023 2111



- Dip Site
- Helispot
- H Helibase
- A Sling Site
-) Division Break
- Incident Command Post
- Drop Point
- ⬢ Repeater
- W Restricted Water Source
- Completed Dozer Line
- Completed Hand Line
- Completed Mixed Construction Line
- Completed Road as Line
- ~ Aerial Hazard
- UAS Launch and Recovery Zone
- Temporary Flight Restriction
- Contained
- Uncontained



FC Point Type	Label	Latitude WGS84 DDM	Longitude WGS84 DDM	FC Point Type	Label	Latitude WGS84 DDM	Longitude WGS84 DDM
Dip Site	Brown Roof Dip	42° 45.682' N	124° 25.601' W	Drop Point	815	42° 43.993' N	124° 25.821' W
Dip Site	River Dip	42° 46.320' N	124° 27.631' W	Drop Point	817	42° 42.986' N	124° 24.774' W
Dip Site	Tanked Dipsite	42° 46.870' N	124° 28.140' W	Drop Point	820	42° 42.613' N	124° 25.671' W
Dip Site	V Dip	42° 44.663' N	124° 25.008' W	Drop Point	830	42° 42.078' N	124° 25.368' W
Drop Point	283	42° 45.146' N	124° 22.735' W	Drop Point	835	42° 41.298' N	124° 26.032' W
Drop Point	285	42° 46.091' N	124° 24.293' W	Drop Point	840	42° 41.798' N	124° 23.947' W
Drop Point	286	42° 46.894' N	124° 25.438' W	Drop Point	850	42° 40.498' N	124° 22.620' W
Drop Point	287	42° 47.198' N	124° 26.607' W	Drop Point	860	42° 40.979' N	124° 21.877' W
Drop Point	288	42° 48.205' N	124° 29.121' W	Drop Point	870	42° 40.745' N	124° 19.532' W
Drop Point	289	42° 49.147' N	124° 28.988' W	Drop Point	880	42° 40.529' N	124° 18.989' W
Drop Point	400	42° 47.534' N	124° 25.360' W	Drop Point	890	42° 40.013' N	124° 17.713' W
Drop Point	403	42° 48.125' N	124° 24.948' W	Drop Point	893	42° 39.831' N	124° 15.447' W
Drop Point	408	42° 47.231' N	124° 24.815' W	Drop Point	894	42° 40.478' N	124° 14.840' W
Drop Point	410	42° 47.113' N	124° 24.378' W	Drop Point	895	42° 41.451' N	124° 15.165' W
Drop Point	416	42° 47.456' N	124° 23.648' W	Drop Point	896	42° 42.637' N	124° 15.533' W
Drop Point	420	42° 47.449' N	124° 23.192' W	Drop Point	897	42° 43.553' N	124° 15.315' W
Drop Point	424	42° 47.186' N	124° 22.997' W	Drop Point	898	42° 41.092' N	124° 13.313' W
Drop Point	440	42° 47.378' N	124° 21.821' W	Drop Point	899	42° 40.756' N	124° 11.328' W
Drop Point	520	42° 47.676' N	124° 18.905' W	Drop Point	900	42° 33.818' N	124° 23.071' W
Drop Point	535	42° 47.381' N	124° 18.131' W	Helibase	Anvil HB	42° 48.249' N	124° 29.011' W
Drop Point	600	42° 48.442' N	124° 25.184' W	Helibase	Catching Creek	42° 57.240' N	124° 11.127' W
Drop Point	601	42° 49.048' N	124° 25.184' W	Helispot	H-0	42° 48.942' N	124° 30.528' W
Drop Point	640	42° 48.810' N	124° 22.989' W	Helispot	H-10	42° 44.937' N	124° 24.989' W
Drop Point	645	42° 48.857' N	124° 21.401' W	Helispot	H-15	42° 45.075' N	124° 23.978' W
Drop Point	650	42° 48.395' N	124° 20.087' W	Helispot	H-155	42° 31.938' N	123° 59.397' W
Drop Point	700	42° 43.526' N	124° 16.253' W	Helispot	H-160	42° 33.933' N	123° 58.551' W
Drop Point	706	42° 42.493' N	124° 17.520' W	Helispot	H-20	42° 45.037' N	124° 21.816' W
Drop Point	710	42° 42.728' N	124° 18.681' W	Helispot	H-25	42° 40.539' N	124° 22.681' W
Drop Point	720	42° 42.790' N	124° 22.574' W	Helispot	H-30	42° 40.729' N	124° 19.060' W
Drop Point	730	42° 44.282' N	124° 24.162' W	Helispot	H-45	42° 47.377' N	124° 21.821' W
Drop Point	732	42° 45.813' N	124° 26.093' W	Helispot	H-5	42° 46.548' N	124° 26.606' W
Drop Point	733	42° 46.531' N	124° 26.900' W	Helispot	H-50	42° 47.458' N	124° 23.636' W
Drop Point	734	42° 47.132' N	124° 28.826' W	Helispot	H-55	42° 48.476' N	124° 24.578' W
Drop Point	735	42° 47.410' N	124° 29.580' W	Incident Command Post	Anvil ICP	42° 48.967' N	124° 30.432' W
Drop Point	800	42° 44.178' N	124° 28.430' W	Sling Site	Gator Sling	42° 46.421' N	124° 23.352' W
Drop Point	801	42° 44.137' N	124° 28.373' W	Sling Site	Goldfish Sling	42° 44.790' N	124° 23.856' W
Drop Point	808	42° 45.188' N	124° 25.847' W	Sling Site	Lamb Sling	42° 46.795' N	124° 22.786' W



NAD 1983 2011 Datum, Lat,Long Grid