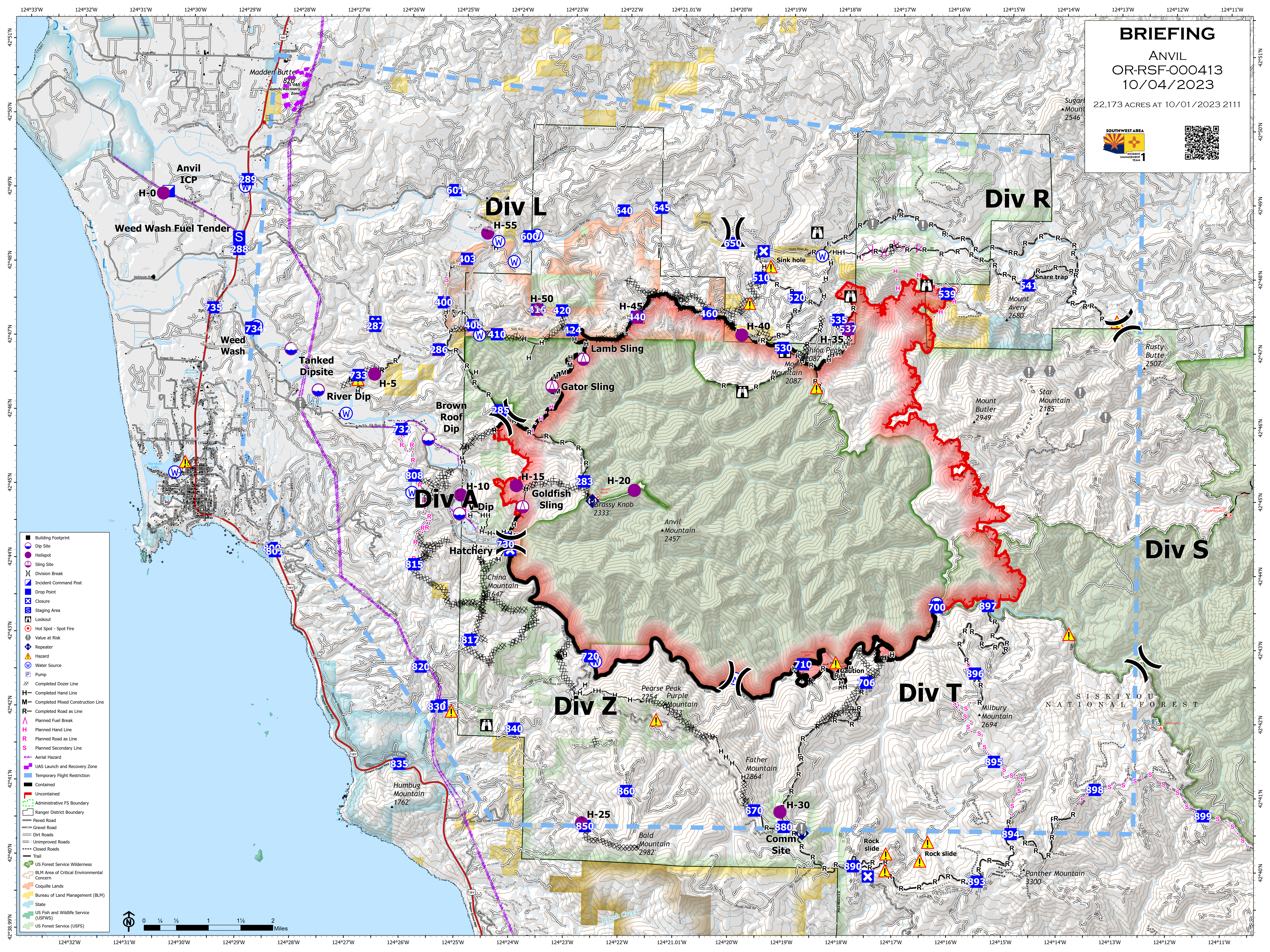


# BRIEFING

ANVIL  
OR-RSF-000413  
10/04/2023

22,173 ACRES AT 10/01/2023 2111



- Building Footprint
- Dip Site
- Helispot
- Sling Site
- ⌋ Division Break
- Ⓜ Incident Command Post
- Ⓧ Drop Point
- ⓧ Closure
- Ⓢ Staging Area
- Ⓜ Lookout
- Ⓢ Hot Spot - Spot Fire
- Ⓢ Value at Risk
- Ⓢ Repeater
- Ⓢ Hazard
- Ⓢ Water Source
- Ⓢ Pump
- Ⓢ Completed Dozer Line
- Ⓢ Completed Hand Line
- Ⓢ Completed Mixed Construction Line
- Ⓢ Completed Road as Line
- Ⓢ Planned Fuel Break
- Ⓢ Planned Hand Line
- Ⓢ Planned Road as Line
- Ⓢ Planned Secondary Line
- Ⓢ Aerial Hazard
- Ⓢ UAS Launch and Recovery Zone
- Ⓢ Temporary Flight Restriction
- Ⓢ Contained
- Ⓢ Uncontained
- Ⓢ Administrative FS Boundary
- Ⓢ Ranger District Boundary
- Ⓢ Paved Road
- Ⓢ Gravel Road
- Ⓢ Dirt Road
- Ⓢ Unimproved Roads
- Ⓢ Closed Roads
- Ⓢ Trail
- Ⓢ US Forest Service Wilderness
- Ⓢ BLM Area of Critical Environmental Concern
- Ⓢ Coquille Lands
- Ⓢ Bureau of Land Management (BLM)
- Ⓢ State
- Ⓢ US Fish and Wildlife Service (USFWS)
- Ⓢ US Forest Service (USFS)

