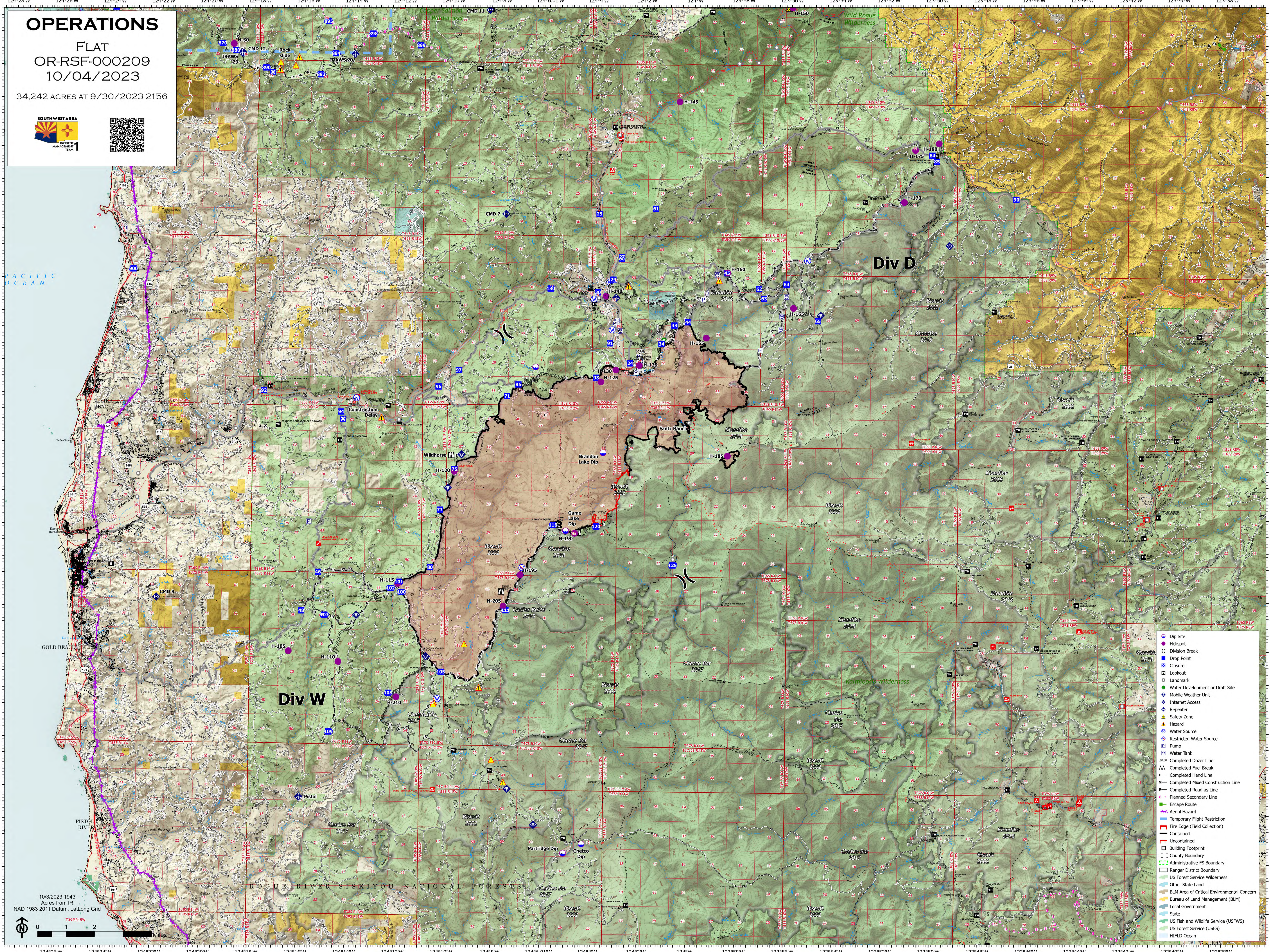


OPERATIONS

FLAT
OR-RSF-000209
10/04/2023

34,242 ACRES AT 9/30/2023 2156



- Dip Site
- Helispot
- Division Break
- Drop Point
- Closure
- Lookout
- Landmark
- Water Development or Draft Site
- Mobile Weather Unit
- Internet Access
- Repeater
- Safety Zone
- Hazard
- Water Source
- Restricted Water Source
- Pump
- Water Tank
- Completed Dozer Line
- Completed Fuel Break
- Completed Hand Line
- Completed Mixed Construction Line
- Completed Road as Line
- Planned Secondary Line
- Escape Route
- Aerial Hazard
- Temporary Flight Restriction
- Fire Edge (Field Collection)
- Contained
- Uncontained
- Building Footprint
- County Boundary
- Administrative FS Boundary
- Ranger District Boundary
- US Forest Service Wilderness
- Other State Land
- BLM Area of Critical Environmental Concern
- Bureau of Land Management (BLM)
- Local Government
- State
- US Fish and Wildlife Service (USFWS)
- US Forest Service (USFS)
- HIFLD Ocean

10/3/2023 1943
Acres from IR
NAD 1983 2011 Datum, Lat/Long Grid

Miles