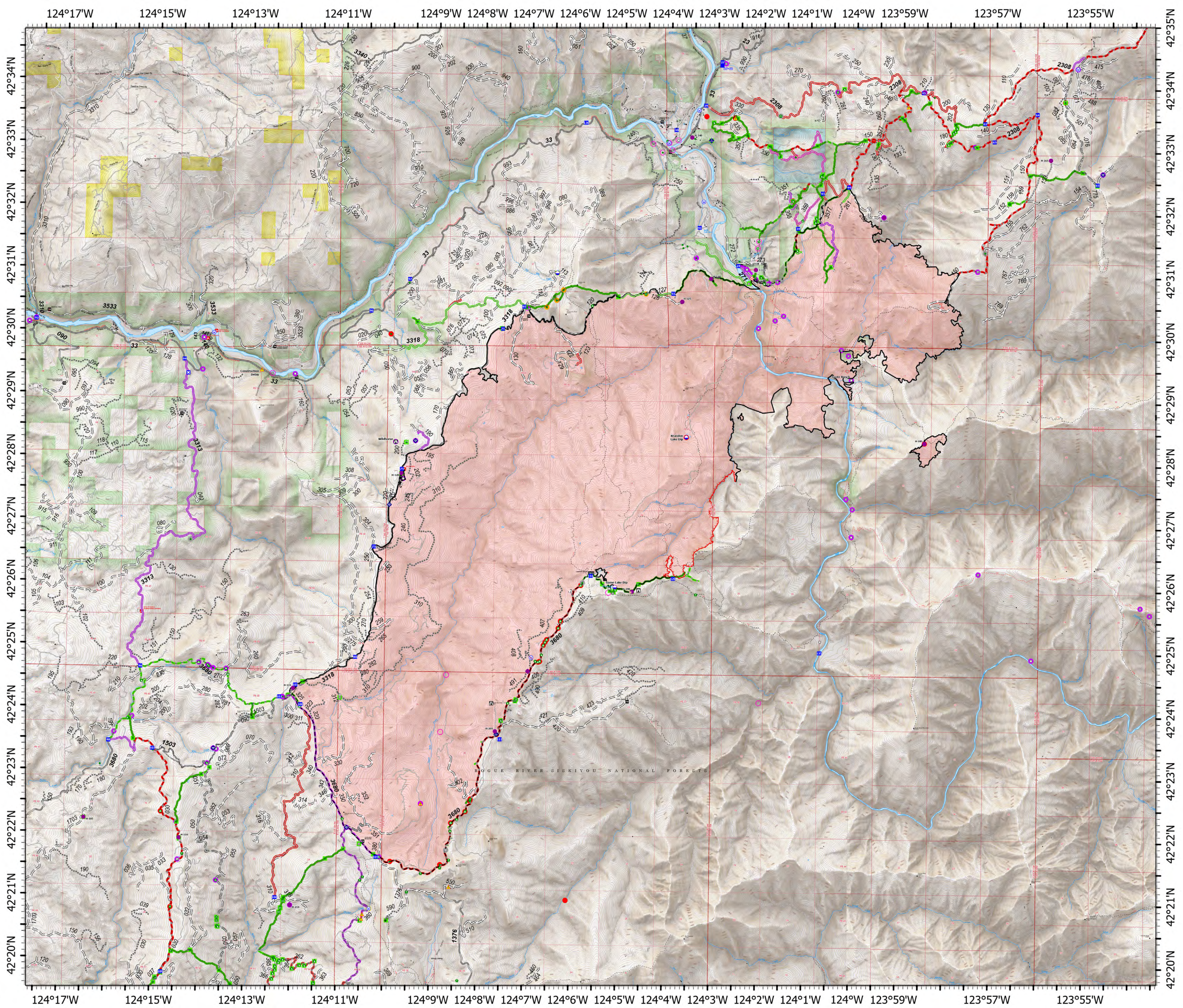


OPERATIONS

ANVIL FLAT
OR-RSF-000413
10/13/2023
22,170 ACRES AT 10/01/2023 2111



- Dip Site
- Hellspot
- Drop Point
- Closure
- Lookout
- Fire Origin
- Value at Risk
- Other
- Landmark
- Gate
- Bridge
- Water Development or Draft Site
- Stream Crossing
- Road Repair
- Retardant in Avoidance Area
- Resource Location
- Repair Point
- Landing or Log Deck
- Dozer Push
- Culvert
- Clean Up Area
- Mobile Weather Unit
- Internet Access
- Hazard
- Water Source
- Restricted Water Source
- Completed Dozer Line
- Completed Fuel Break
- Completed Hand Line
- Completed Mixed Construction Line
- Completed Road as Line
- Access or Improved Road
- Contained
- Uncontained Fire Edge
- Building Footprint
- Bureau of Land Management (BLM)
- State
- US Forest Service (USFS)
- In Use - Fire Management
- Needs Assessment
- Repair Needed
- In Progress
- Completed - Ready for Inspection
- Completed - Inspected
- Other - See Comments
- In Use - Fire Management
- Needs Assessment
- Repair Needed
- Completed - Inspected
- No Repair Needed
- Other - See Comments



0 1/4 1/2 1 1 1/2 2 Miles