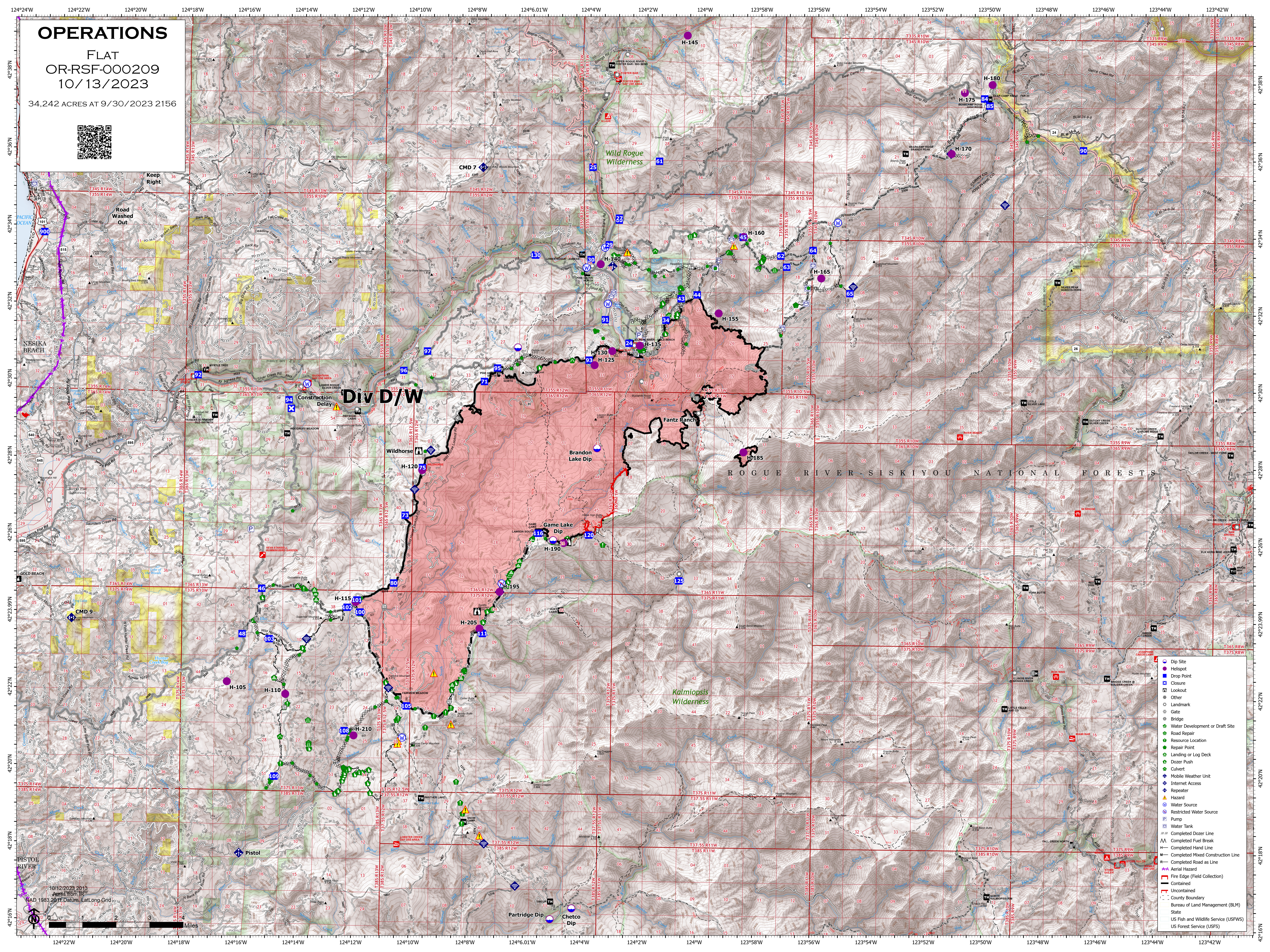


# OPERATIONS

FLAT  
OR-RSF-000209  
10/13/2023

34,242 ACRES AT 9/30/2023 2156



- Dip Site
- Helisport
- Drop Point
- Closure
- Lookout
- Other
- Landmark
- Gate
- Water Development or Draft Site
- Road Repair
- Resource Location
- Repair Point
- Landing or Log Deck
- Dozer Push
- Culvert
- Mobile Weather Unit
- Repeater
- Internet Access
- Water Source
- Restricted Water Source
- Pump
- Water Tank
- Completed Dozer Line
- Completed Fuel Break
- Completed Hand Line
- Completed Mixed Construction Line
- Completed Road as Line
- Aerial Hazard
- Fire Edge (Field Collection)
- Contained
- Uncontained
- County Boundary
- Bureau of Land Management (BLM)
- State
- US Fish and Wildlife Service (USFWS)
- US Forest Service (USFS)